

Operations

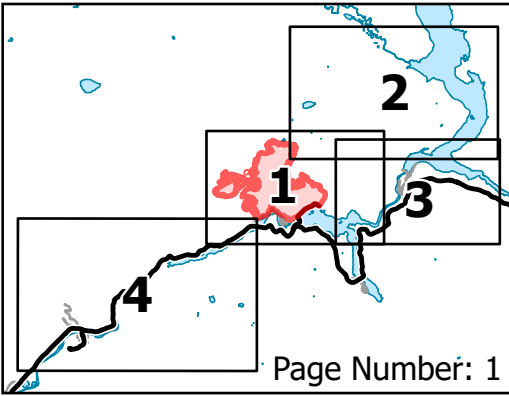
Sourdough

WA-NCP-000262

8/10/2023 Day

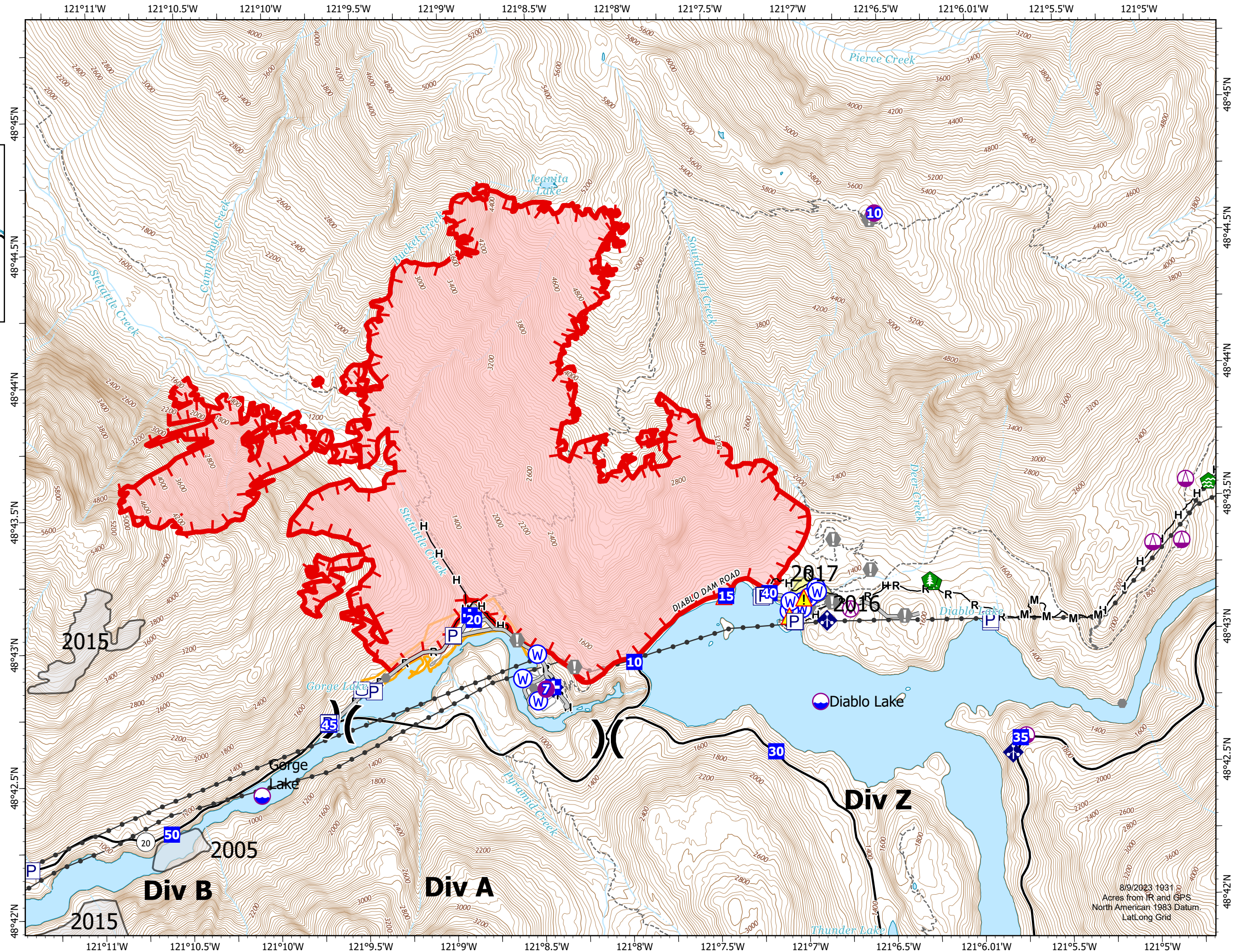
1748 acres at 08/09/23 0300

0 0.25 0.5 Miles



Page Number: 1

- Aerial Hazard
- Dip Site
- Helispot
- Sling Site
- Division Break
- Medical
- Drop Point
- Value at Risk
- Other
- Gate
- Water Development or Draft Site
- Hazard Tree
- Mobile Weather Unit
- Hazard
- Water Source
- Wildfire Daily Fire Perimeter
- Completed Hand Line
- Completed Mixed Construction Line
- Completed Road as Line
- Access or Improved Road
- Other
- Uncontained
- Historic Structure
- Transmission Lines
- Fuels Treatments
- Fire History
- Seattle City Light Property
- Trail



8/9/2023 1931
Acres from IR and GPS
North American 1983 Datum
Lat/Long Grid