

121°16'W

121°14'W

121°12'W

121°10'W

**IAP**  
**Div B**  
 Sourdough  
 WA-NCP-000262  
 8/14/2023 Day  
 2586 acres at 08/12/23 2052



- Pump
- Water Tank
- Helispot
- Division Break
- Incident Command Post
- Drop Point
- Completed Hand Line
- Completed Road as Line
- Access or Improved Road
- UAS Launch and Recovery Zone
- Contained
- Uncontained
- Wildfire Daily Fire Perimeter
- Trail

48°44'N

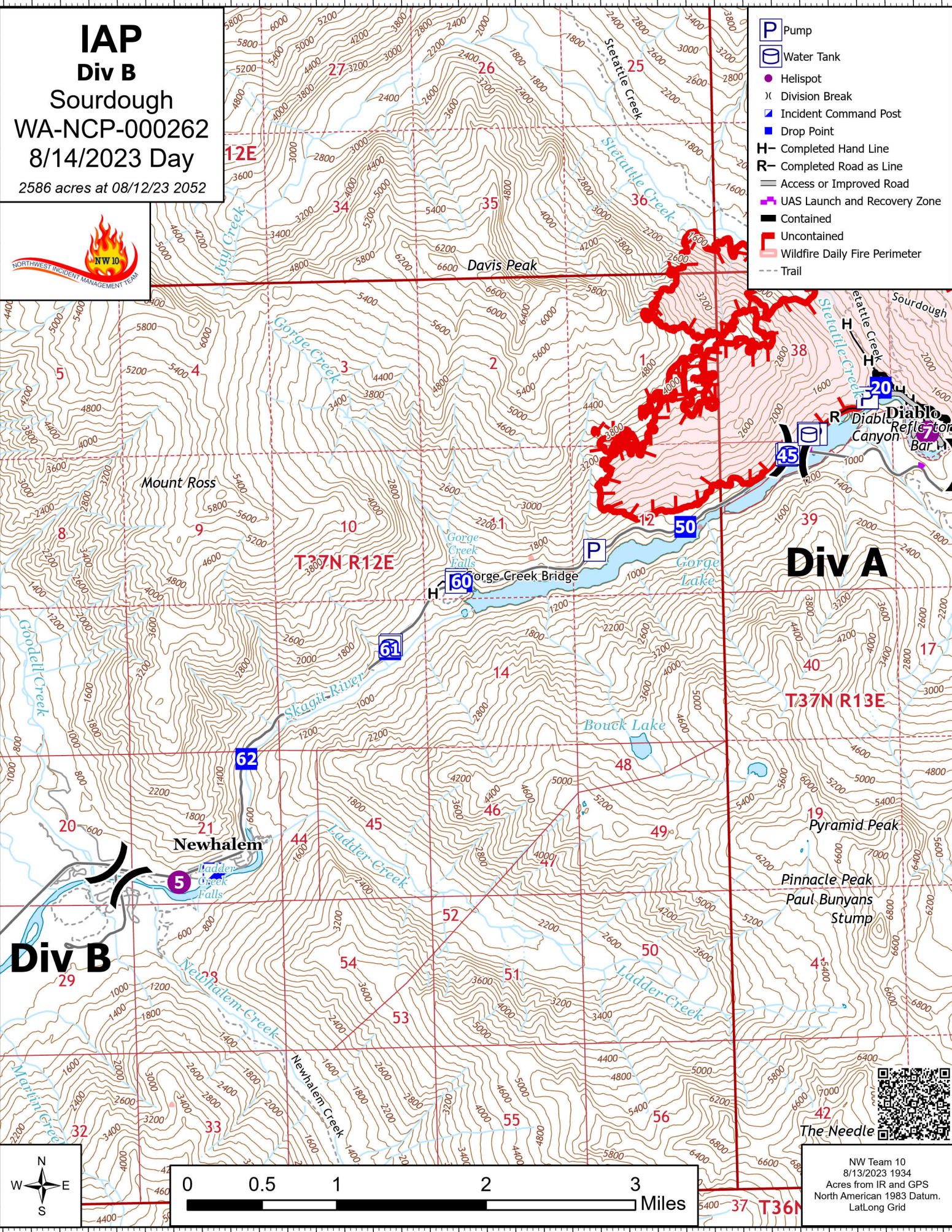
48°44'N

48°42'N

48°42'N

48°40'N

48°40'N



NW Team 10  
 8/13/2023 1934  
 Acres from IR and GPS  
 North American 1983 Datum.  
 Lat/Long Grid

121°16'W

121°14'W

121°12'W

121°10'W