

121°8'W

121°6.01'W

121°4'W

IAP
Div Z
 Sourdough
 WA-NCP-000262
 8/14/2023 Day
 2586 acres at 08/12/23 2052

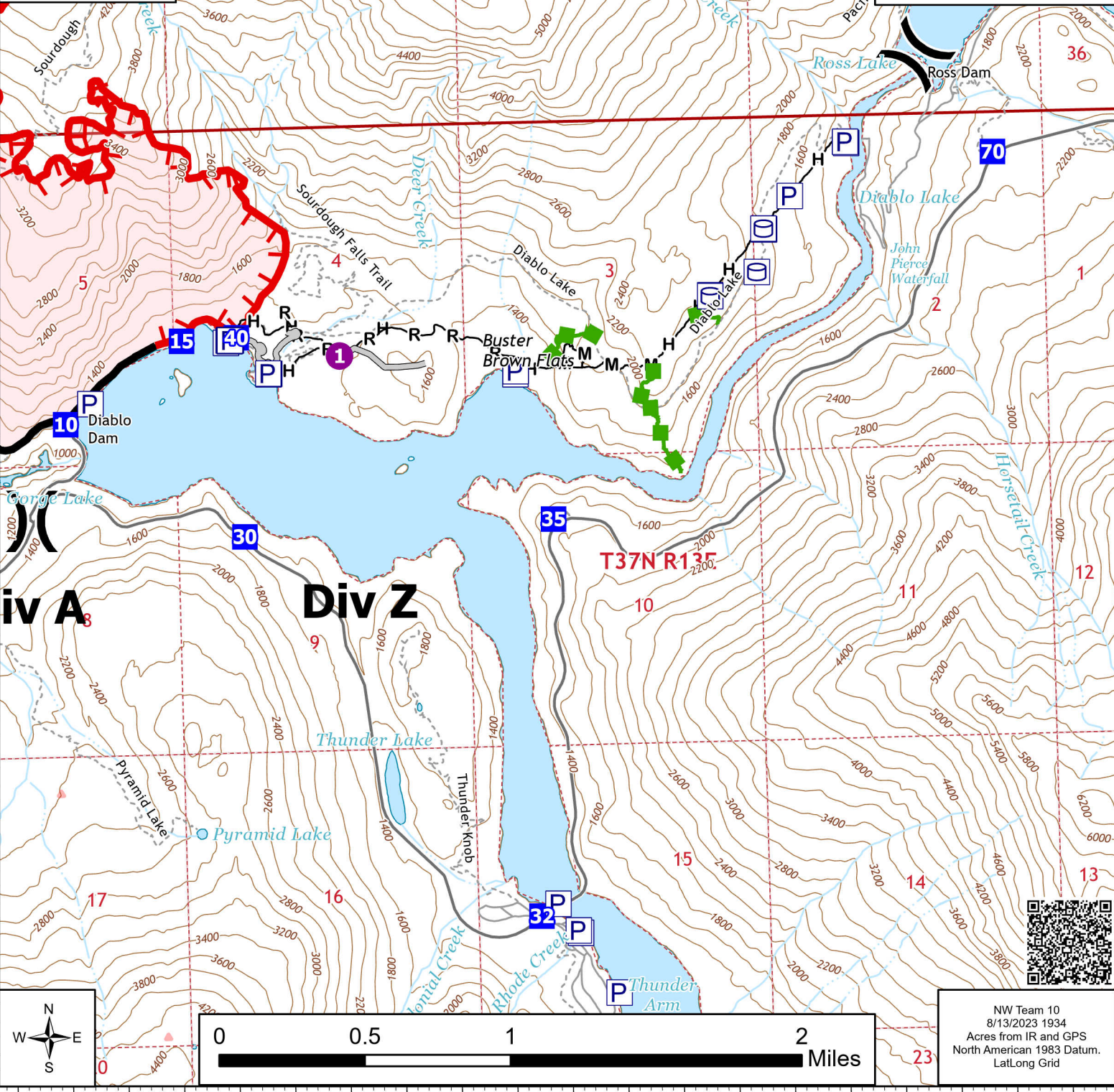


- P Pump
- W Water Tank
- Helispot
- X Division Break
- Drop Point
- ▲ Completed Fuel Line
- H Completed Hand Line
- M Completed Mixed Construction Line
- R Completed Road as Line
- Access or Improved Road
- Other
- Escape Route
- Contained
- Uncontained
- Wildfire Daily Fire Perimeter
- Trail

Div Y

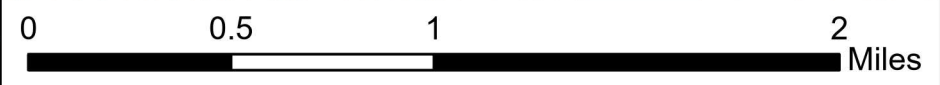
T38N R13E

T37N R13E



Div A

Div Z



NW Team 10
 8/13/2023 1934
 Acres from IR and GPS
 North American 1983 Datum.
 Lat/Long Grid

121°8'W

121°6.01'W

121°4'W

48°44'N

48°44'N

48°42'N

48°42'N