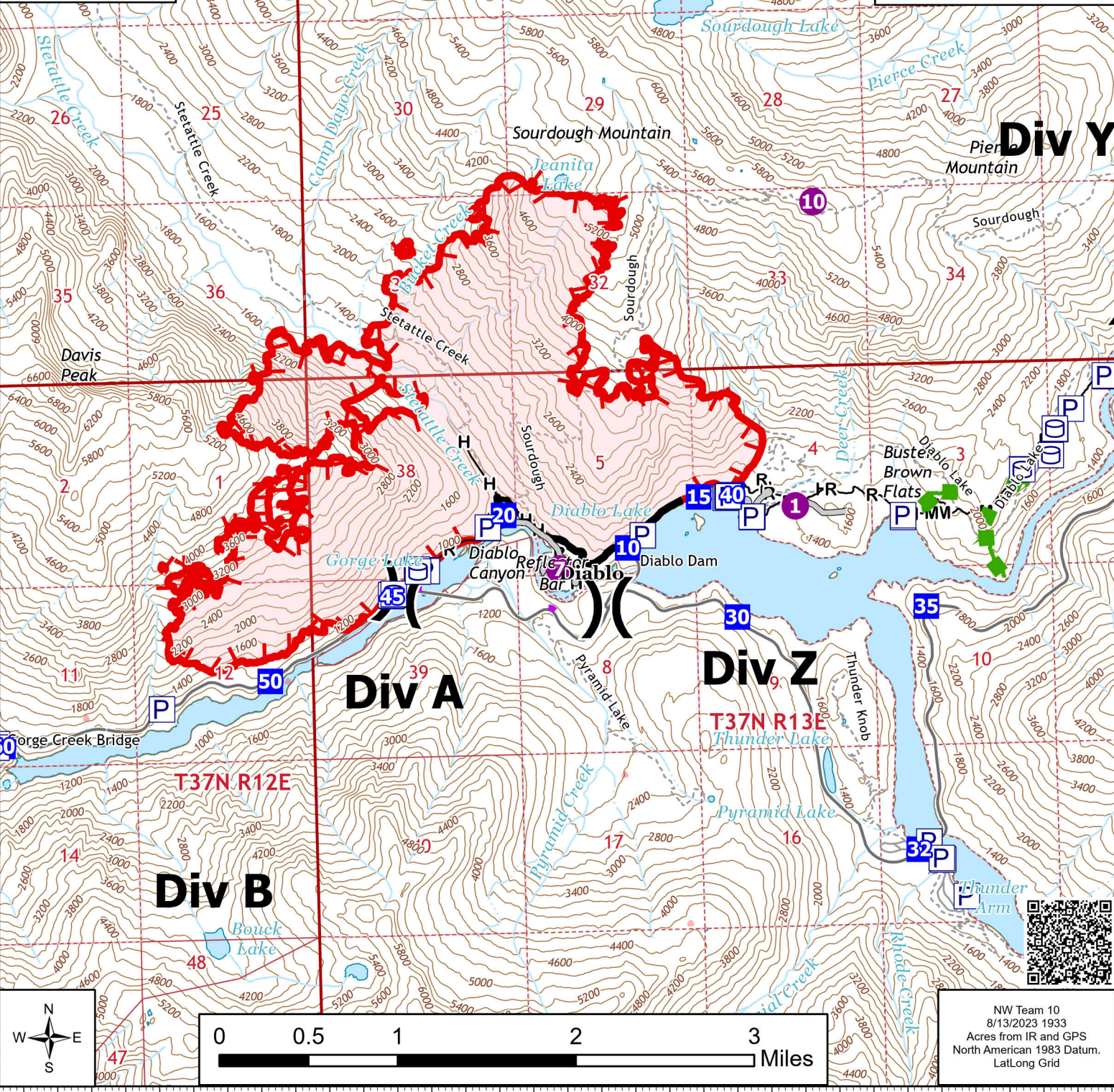


121°12'W 121°10'W 121°8'W 121°6.01'W

IAP
Main
Sourdough
WA-NCP-000262
8/14/2023 Day
2586 acres at 08/12/23 2052



- Pump
- Water Tank
- Helispot
- Division Break
- Drop Point
- Completed Hand Line
- Completed Mixed Construction Line
- Completed Road as Line
- Access or Improved Road
- Other
- Escape Route
- UAS Launch and Recovery Zone
- Contained
- Uncontained
- Wildfire Daily Fire Perimeter
- Trail



NW Team 10
8/13/2023 1933
Acres from IR and GPS
North American 1983 Datum.
Lat/Long Grid

121°12'W 121°10'W 121°8'W 121°6.01'W

48°46'N 48°44'N 48°42'N

48°46'N 48°44'N 48°42'N