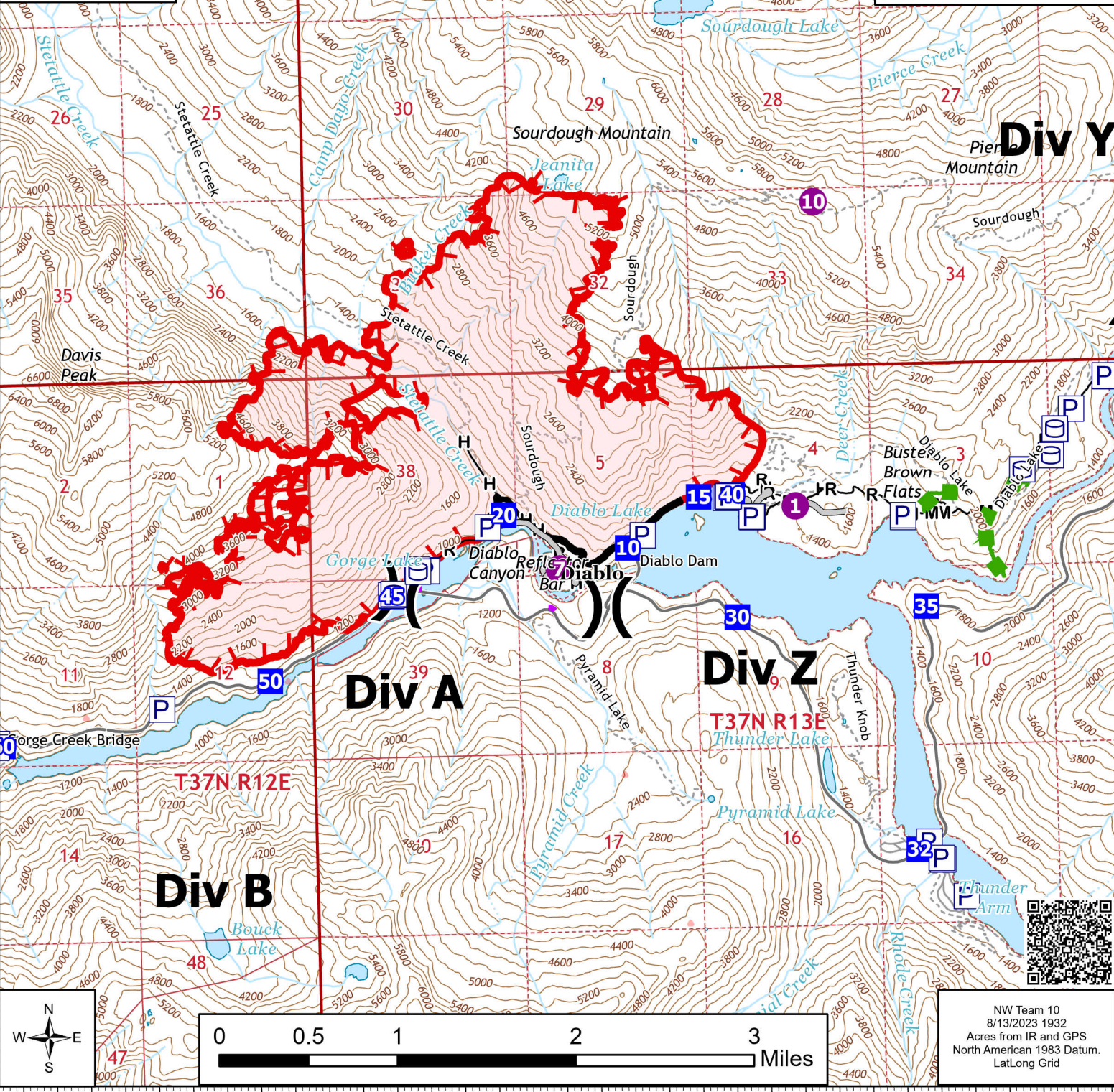


121°12'W 121°10'W 121°8'W 121°6.01'W

IAP
Main
Sourdough
WA-NCP-000262
8/14/2023 Day
2586 acres at 08/12/23 2052

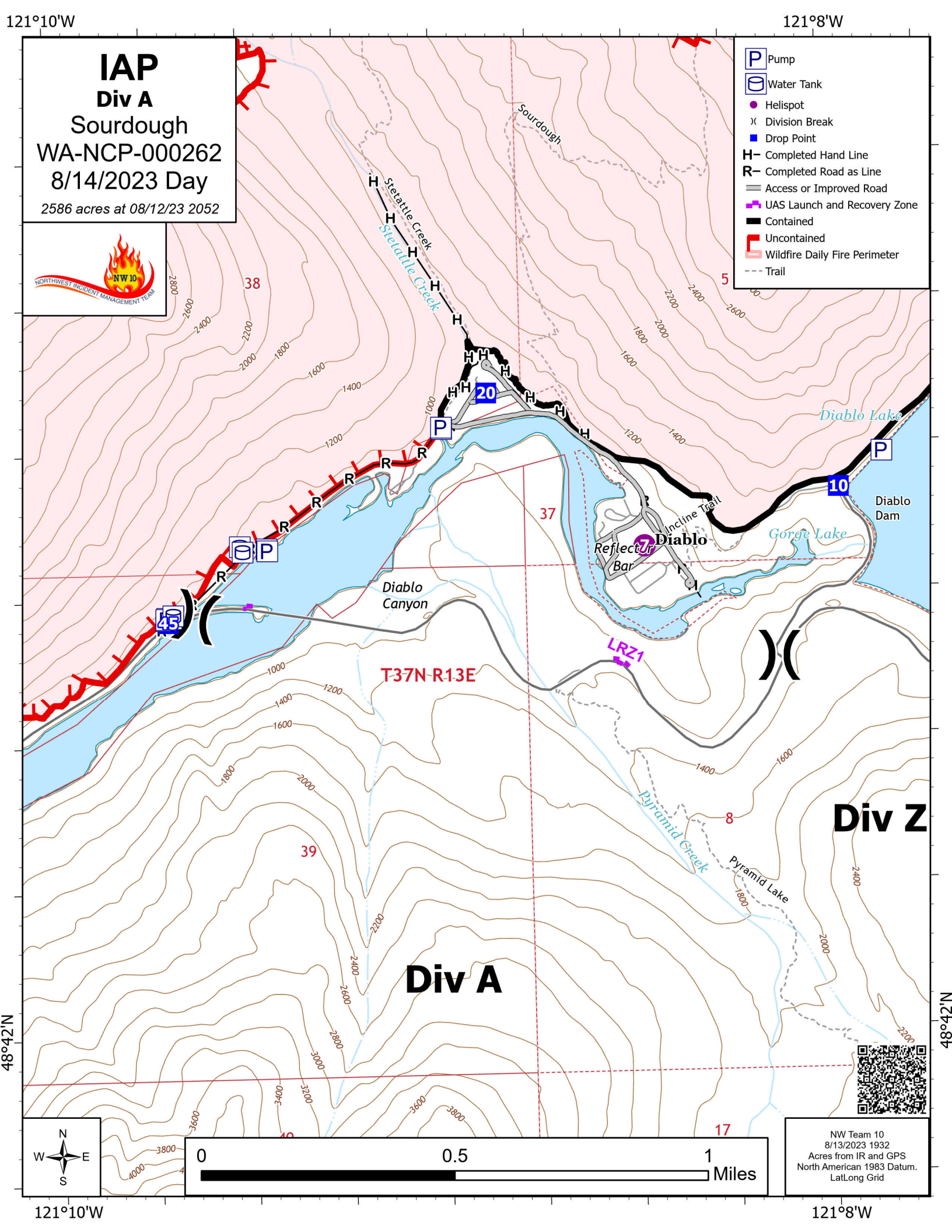


- Pump
- Water Tank
- Helispot
- Division Break
- Drop Point
- Completed Hand Line
- Completed Mixed Construction Line
- Completed Road as Line
- Access or Improved Road
- Other
- Escape Route
- UAS Launch and Recovery Zone
- Contained
- Uncontained
- Wildfire Daily Fire Perimeter
- Trail



NW Team 10
8/13/2023 1932
Acres from IR and GPS
North American 1983 Datum.
Lat/Long Grid

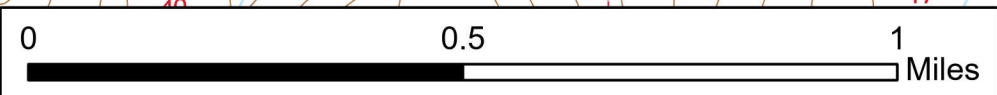
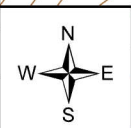




IAP
Div A
Sourdough
WA-NCP-000262
8/14/2023 Day
2586 acres at 08/12/23 2052



- Pump
- Water Tank
- Helispot
- Division Break
- Drop Point
- Completed Hand Line
- Completed Road as Line
- Access or Improved Road
- UAS Launch and Recovery Zone
- Contained
- Uncontained
- Wildfire Daily Fire Perimeter
- Trail



NW Team 10
8/13/2023 1932
Acres from IR and GPS
North American 1983 Datum.
LatLong Grid

121°10'W

121°8'W

48°42'N

48°42'N

121°8'W

121°6.01'W

121°4'W

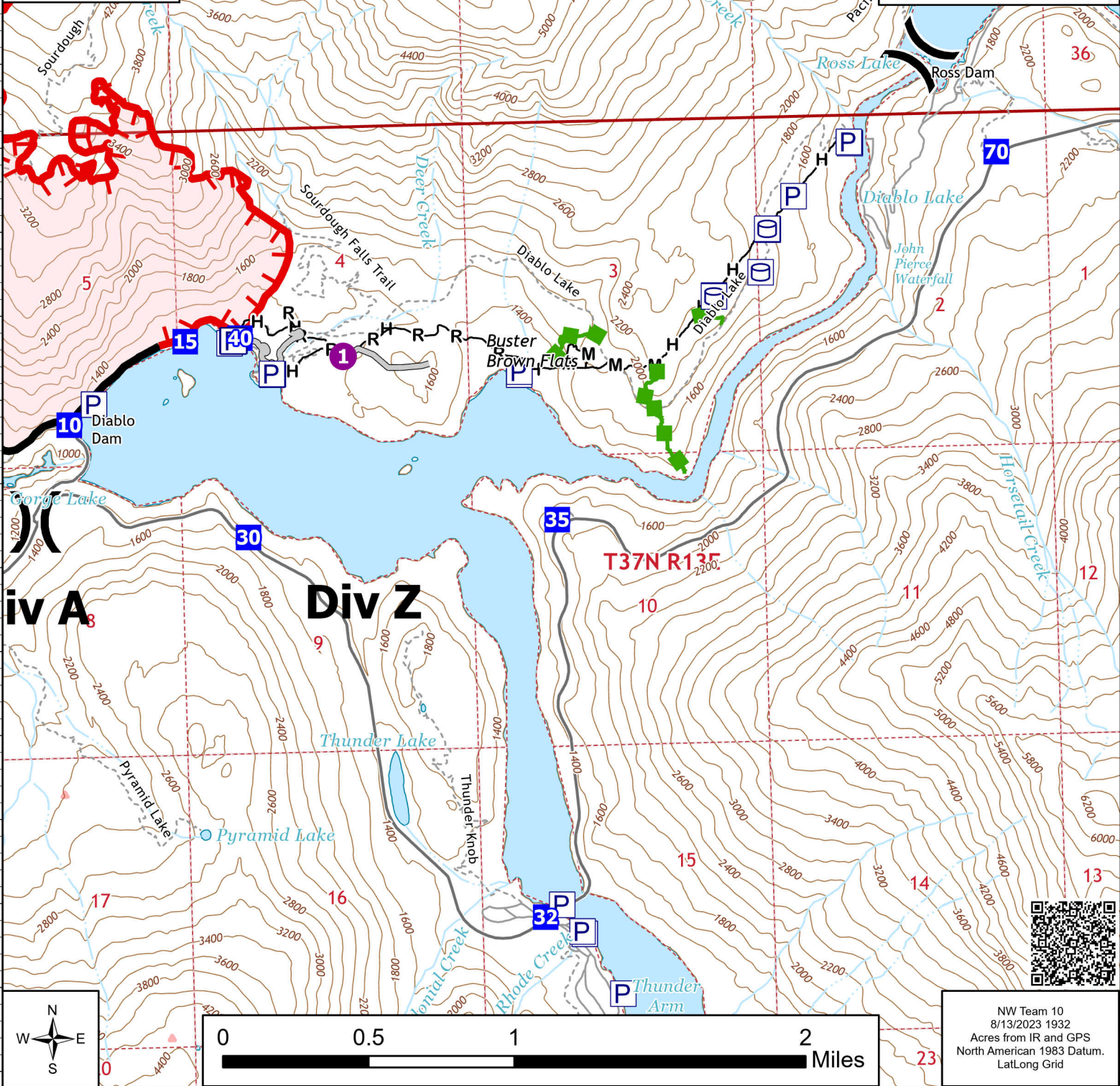
IAP
Div Z
 Sourdough
 WA-NCP-000262
 8/14/2023 Day
 2586 acres at 08/12/23 2052



- P Pump
- O Water Tank
- Helispot
- ⊗ Division Break
- Drop Point
- ▲ Completed Fuel Break
- Completed Hand Line
- Completed Mixed Construction Line
- Completed Road as Line
- Access or Improved Road
- Other
- █ Escape Route
- Contained
- Uncontained
- ▭ Wildfire Daily Fire Perimeter
- Trail

48°44'N

48°44'N



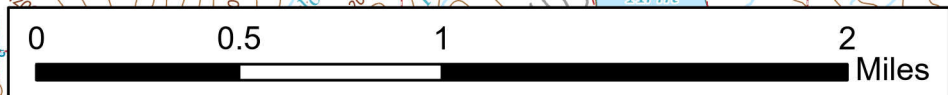
48°42'N

48°42'N

121°8'W

121°6.01'W

121°4'W



NW Team 10
 8/13/2023 1932
 Acres from IR and GPS
 North American 1983 Datum.
 Lat/Long Grid

121°6.01'W

121°4'W

121°2'W

48°48'N

48°48'N

IAP
Div Y
 Sourdough
 WA-NCP-000262
 8/14/2023 Day
 2586 acres at 08/12/23 2052



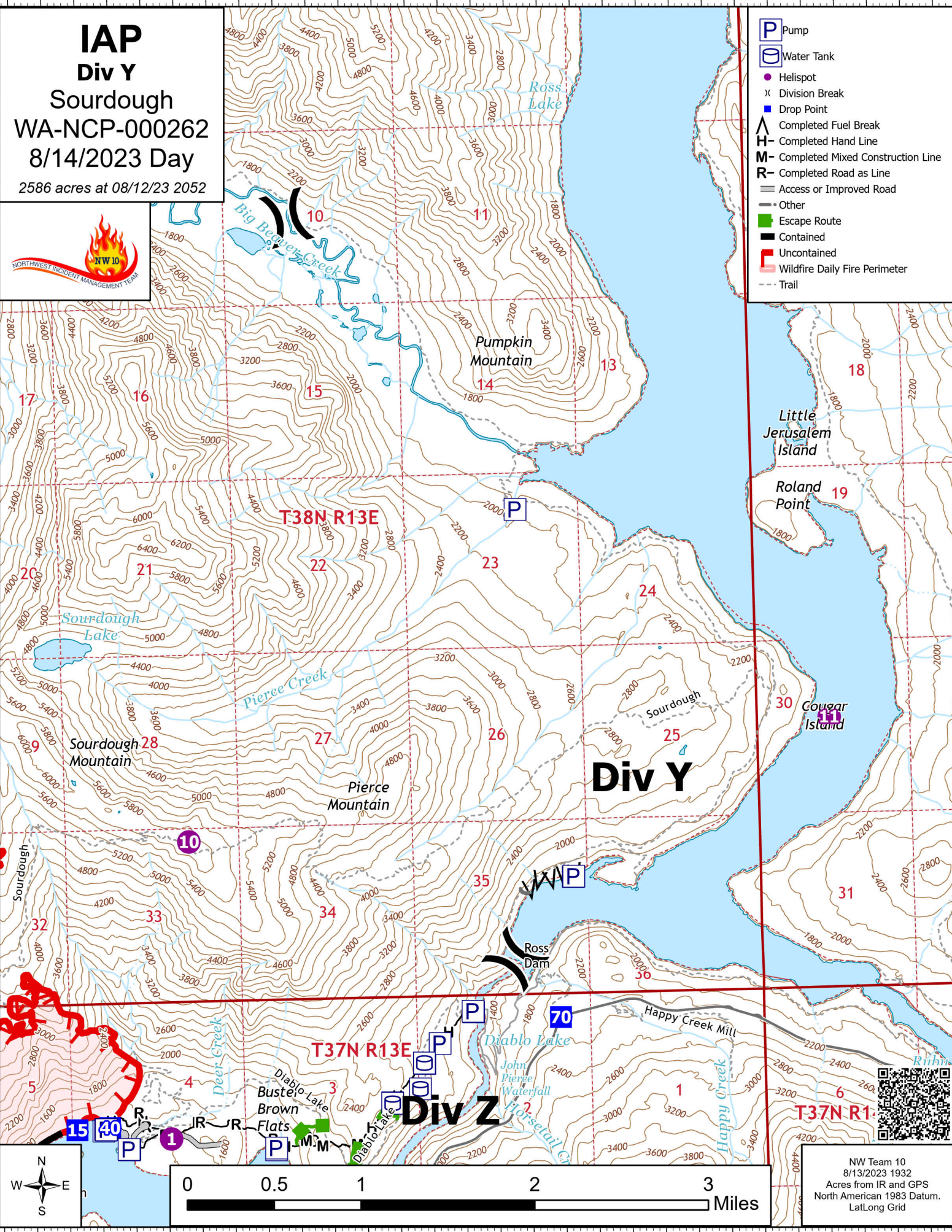
- Pump
- Water Tank
- Helispot
- Division Break
- Drop Point
- Completed Fuel Break
- Completed Hand Line
- Completed Mixed Construction Line
- Completed Road as Line
- Access or Improved Road
- Other
- Escape Route
- Contained
- Uncontained
- Wildfire Daily Fire Perimeter
- Trail

48°46'N

48°46'N

48°44'N

48°44'N



NW Team 10
 8/13/2023 1932
 Acres from IR and GPS
 North American 1983 Datum.
 Lat/Long Grid

121°8'W

121°6.01'W

121°4'W

121°2'W

121°16'W

121°14'W

121°12'W

121°10'W

IAP
Div B
 Sourdough
 WA-NCP-000262
 8/14/2023 Day
 2586 acres at 08/12/23 2052



- Pump
- Water Tank
- Helispot
- Division Break
- Incident Command Post
- Drop Point
- Completed Hand Line
- Completed Road as Line
- Access or Improved Road
- UAS Launch and Recovery Zone
- Contained
- Uncontained
- Wildfire Daily Fire Perimeter
- Trail

48°44'N

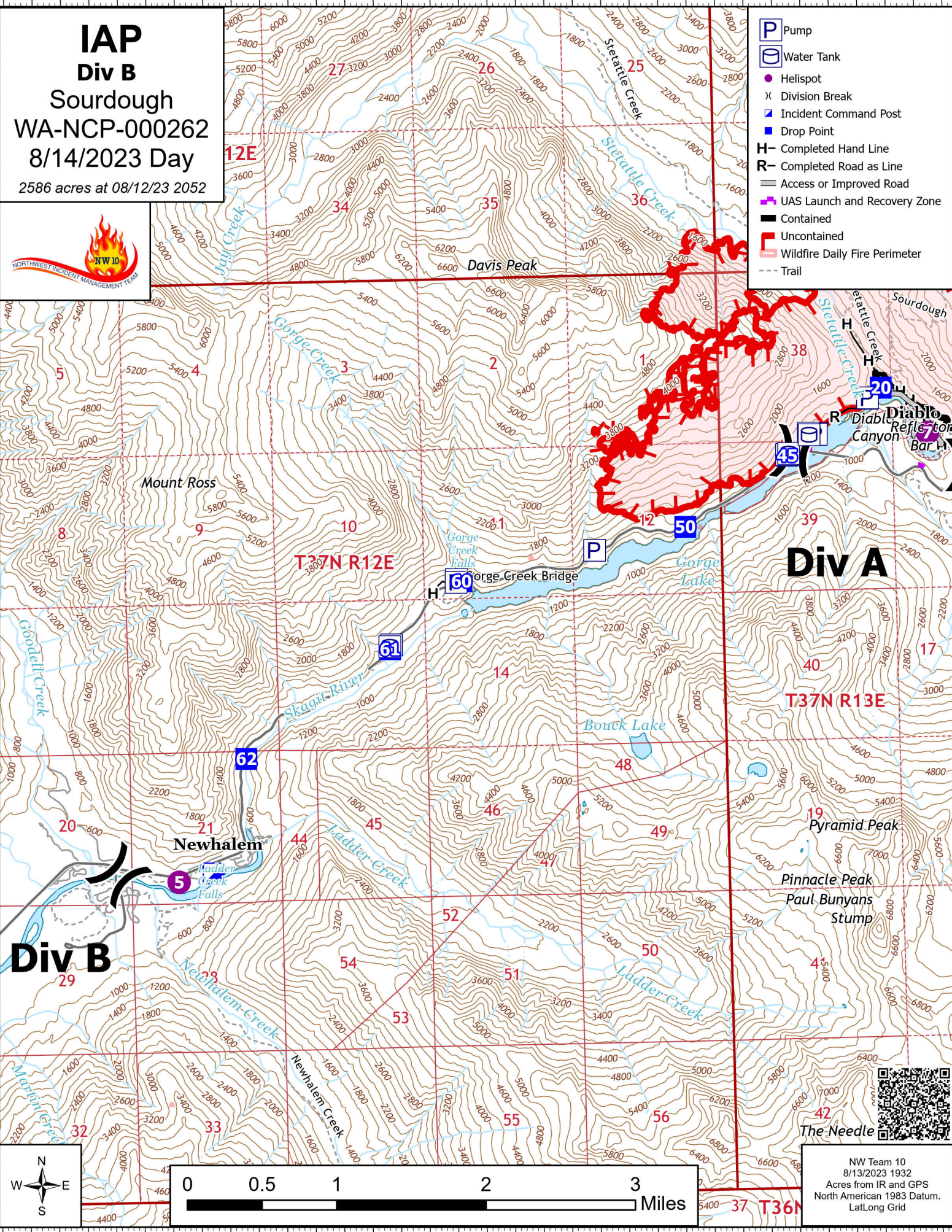
48°44'N

48°42'N

48°42'N

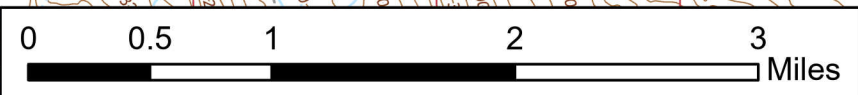
48°40'N

48°40'N



Div B

Div A



NW Team 10
 8/13/2023 1932
 Acres from IR and GPS
 North American 1983 Datum.
 Lat/Long Grid

121°16'W

121°14'W

121°12'W

121°10'W