

Operations

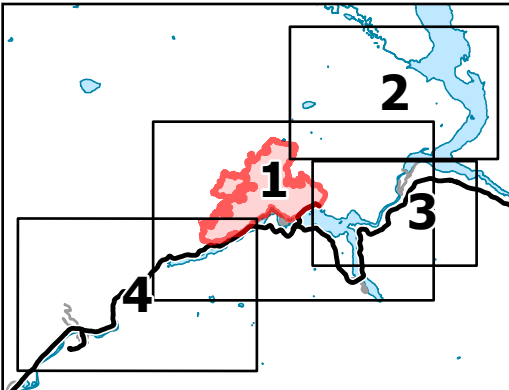
Sourdough

WA-NCP-000262

8/14/2023 Day

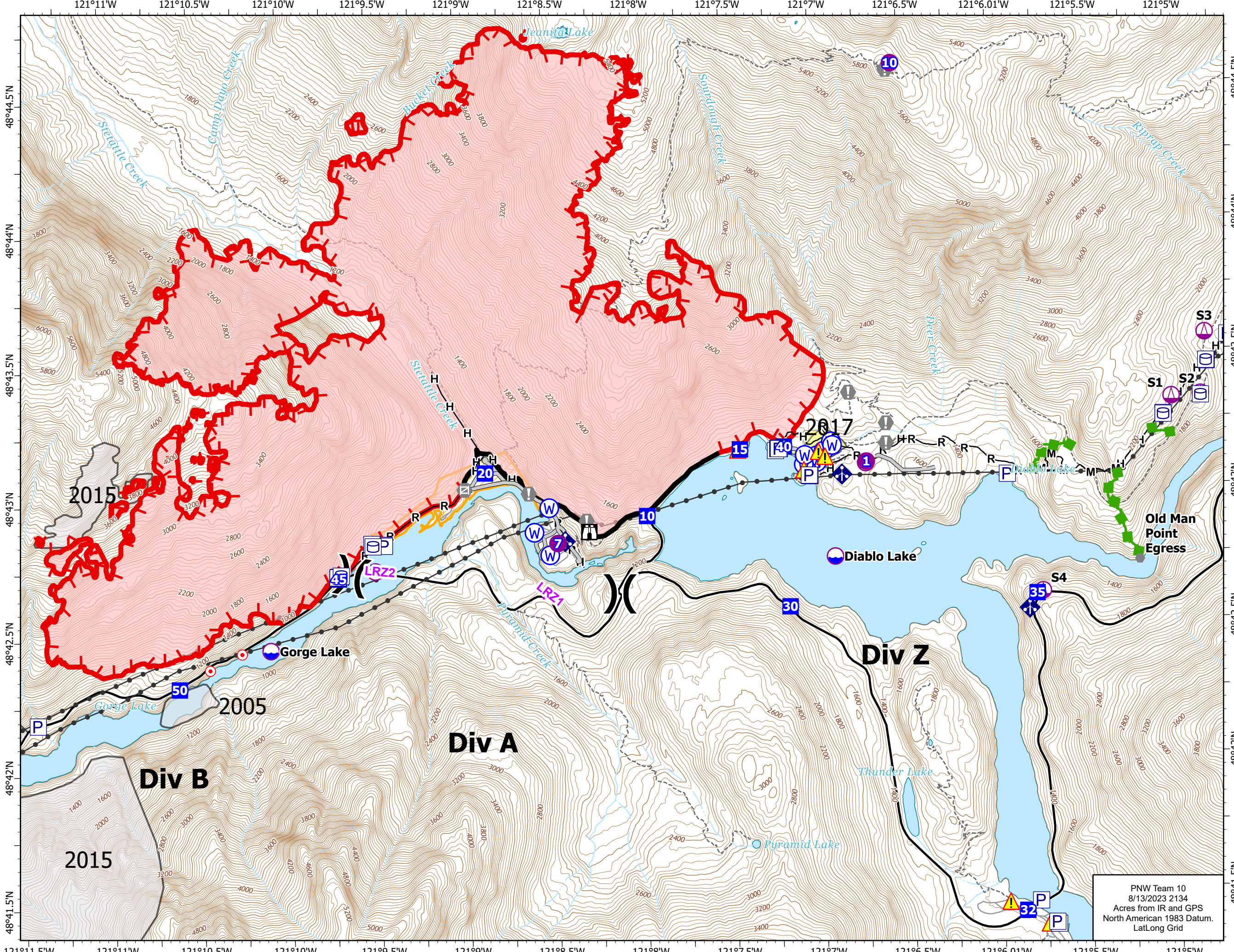
2586 acres at 08/12/23 2052

0 0.25 0.5 Miles



Page Number: 1

- ⊕ Aerial Hazard
- ✈ Airstrip or Airport
- ⊙ Dip Site
- ⊙ Helispot
- ⊕ Sling Site
- ⌘ Division Break
- Drop Point
- ⊠ Lookout
- ⊙ Hot Spot - Spot Fire
- ⊙ Value at Risk
- ⊙ Other
- ⊙ Landmark
- ⊙ Gate
- ⊙ Mobile Weather Unit
- ⚠ Hazard
- ⊙ Water Source
- 🔴 Wildfire Daily Fire Perimeter
- H— Completed Hand Line
- M— Completed Mixed Construction Line
- R— Completed Road as Line
- Access or Improved Road
- Other
- 🟢 Escape Route
- 🟡 UAS Launch and Recovery Zone
- ⬛ Contained
- 🔴 Uncontained
- 🏠 Historic Structure
- ⬛ Transmission Lines
- 🟡 Fuels Treatments
- 🏠 Fire History
- 🟡 Seattle City Light Property
- ⋯ Trail



PNW Team 10
8/13/2023 2134
Acres from IR and GPS
North American 1983 Datum.
LatLong Grid