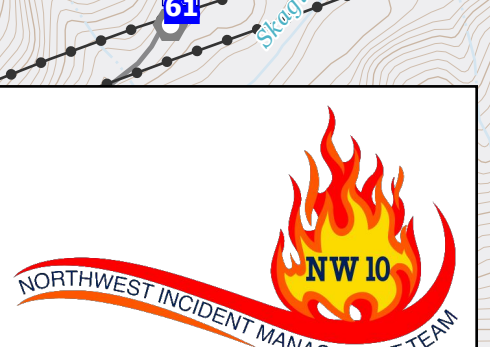
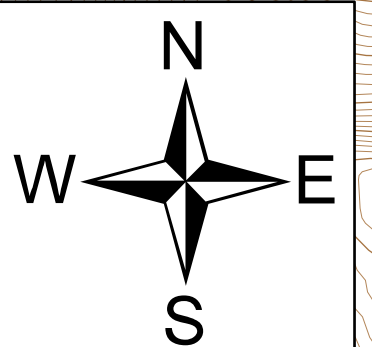


121°13'W 121°12.5'W 121°12'W 121°11.5'W 121°11'W 121°10.5'W 121°10'W 121°9.5'W 121°9'W 121°8.5'W 121°8'W 121°7.5'W 121°7'W 121°6.5'W 121°6'W 121°5.5'W 121°5'W 121°4.5'W 121°4'W 121°3.5'W 121°3'W

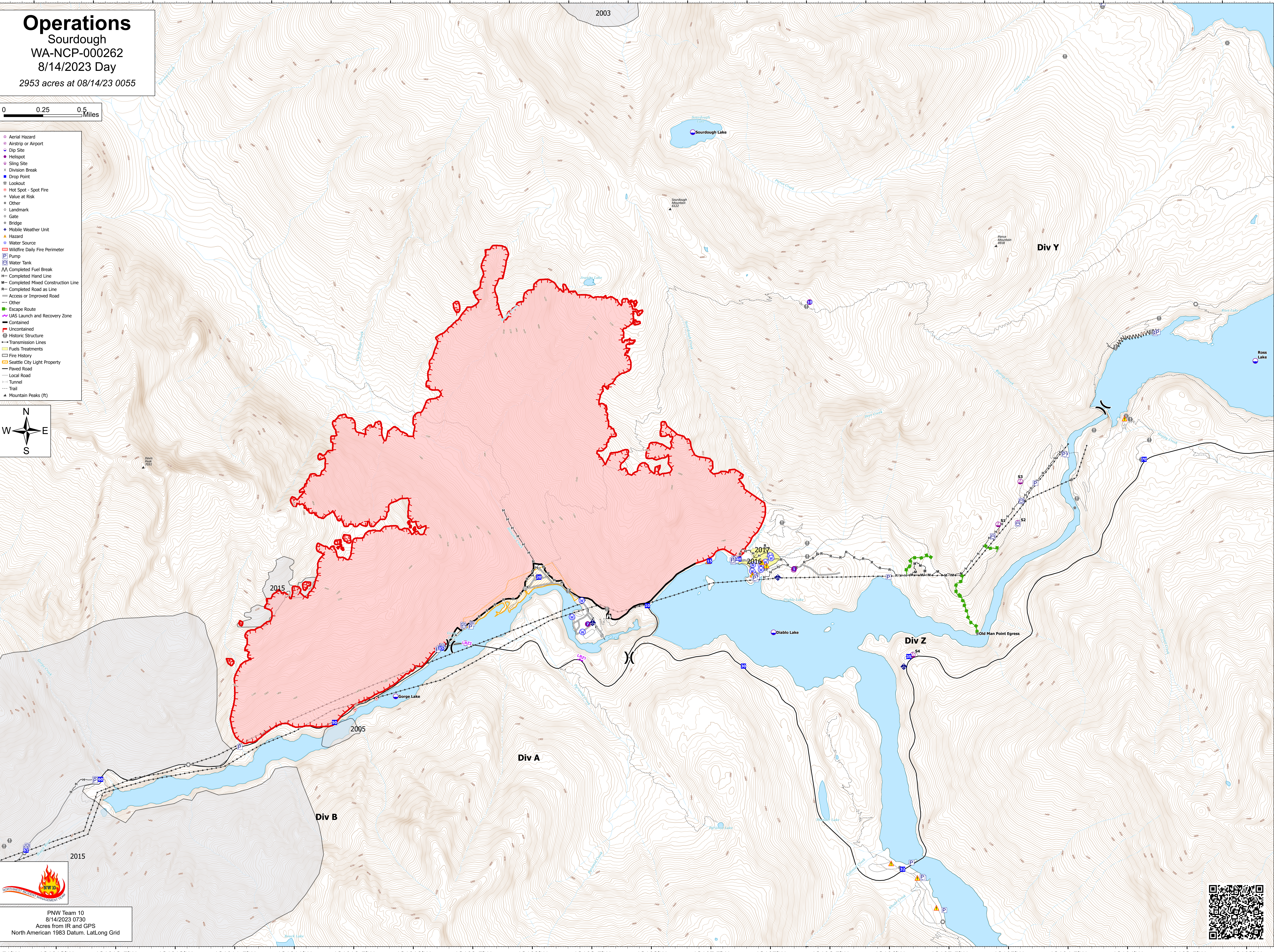
Operations
Sourdough
WA-NCP-000262
8/14/2023 Day
2953 acres at 08/14/23 0055

0 0.25 0.5 Miles

- Aerial Hazard
- Airstrip or Airport
- Dip Site
- Helispot
- Slip Site
- Division Break
- Drop Point
- Lookout
- Hot Spot - Spot Fire
- Value at Risk
- Other
- Landmark
- Gate
- Bridge
- Mobile Weather Unit
- Hazard
- Water Source
- Wildfire Daily Fire Perimeter
- Pump
- Water Tank
- Completed Fuel Break
- Completed Hand Line
- Completed Mixed Construction Line
- Completed Road as Line
- Access or Improved Road
- Other
- Escape Route
- UAS Launch and Recovery Zone
- Contained
- Uncontained
- Historic Structure
- Transmission Lines
- Fuels Treatments
- Fire History
- Seattle City Light Property
- Paved Road
- Local Road
- Tunnel
- Trail
- Mountain Peaks (ft)



PNW Team 10
8/14/2023 0730
Acres from IR and GPS
North American 1983 Datum, Lat,Long Grid



121°13.5'W 121°13'W 121°12.5'W 121°12'W 121°11.5'W 121°11'W 121°10.5'W 121°10'W 121°9.5'W 121°9'W 121°8.5'W 121°8'W 121°7.5'W 121°7'W 121°6.5'W 121°6'W 121°5.5'W 121°5'W 121°4.5'W 121°4'W 121°3.5'W 121°3'W