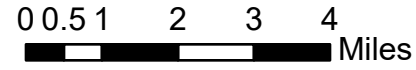


# Communications

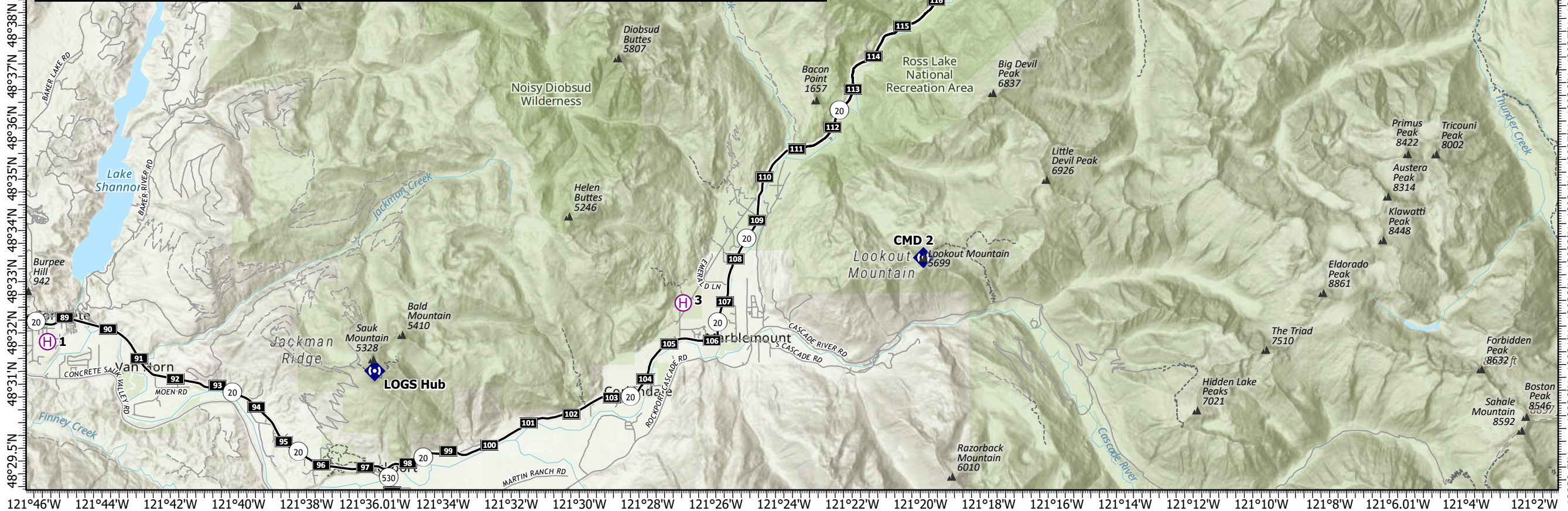
Sourdough  
WA-NCP-000262  
08/06/23

2953 acres at 08/14/23 0055



- Helispot
- H Helibase
- ) Division Break
- ICP Incident Command Post
- DP Drop Point
- X Closure
- G Gate
- R Repeater
- Wildfire Daily Fire Perimeter
- Access or Improved Road
- Contained
- Uncontained
- Mileposts
- Trail
- ▲ Mountain Peaks (ft)

FC Point Type	Label	Elevation (Feet)	Latitude WGS84 DDM	Longitude WGS84 DDM
Drop Point	20	897	48° 43.094' N	121° 08.871' W
Drop Point	10	1225	48° 42.921' N	121° 07.964' W
Drop Point	30	1464	48° 42.572' N	121° 07.169' W
Drop Point	40	1222	48° 43.168' N	121° 07.186' W
Drop Point	45	897	48° 42.713' N	121° 09.707' W
Drop Point	50	1037	48° 42.314' N	121° 10.617' W
Drop Point	62	590	48° 41.022' N	121° 14.520' W
Drop Point	61	879	48° 41.643' N	121° 13.235' W
Drop Point	60	1096	48° 42.028' N	121° 12.594' W
Drop Point	15	1220	48° 43.161' N	121° 07.433' W
Drop Point	35	1704	48° 42.602' N	121° 05.777' W
Drop Point	70	2127	48° 43.666' N	121° 03.758' W
Drop Point	32	1231	48° 41.420' N	121° 05.874' W
Drop Point	71	48° 44.098' N	121° 03.717' W	
Drop Point	72	48° 44.362' N	121° 03.652' W	
Helibase	1	265	48° 31.821' N	121° 45.526' W
Helibase	3	361	48° 32.350' N	121° 26.838' W
Helispot	7	895	48° 42.827' N	121° 08.469' W
Helispot	5	504	48° 40.314' N	121° 15.134' W
Helispot	10	5935	48° 44.560' N	121° 06.570' W
Helispot	11	1601	48° 45.133' N	121° 01.672' W
Helispot	1	1329	48° 43.106' N	121° 06.723' W
Incident Command Post		514	48° 40.361' N	121° 14.830' W
Repeater	CMD1	7379	48° 41.644' N	121° 02.583' W
Repeater	LOGS Hub	5362	48° 31.142' N	121° 35.936' W
Repeater	CMD 2	5660	48° 33.135' N	121° 19.756' W



PNW Team 10  
8/15/2023 1919  
Acres from IR and GPS  
North American 1983 Datum. LatLong Grid