

121°6.01'W

121°4'W

121°2'W

IAP
Div Y
 Sourdough
 WA-NCP-000262
 8/16/2023 Day
 2953 acres at 08/14/23 0055



- P Pump
- W Water Tank
- Helispot
- X Division Break
- Drop Point
- ^ Completed Fuel Break
- H Completed Hand Line
- M Completed Mixed Construction Line
- R Completed Road as Line
- H Planned Hand Line
- Access or Improved Road
- - - Other
- Escape Route
- Contained
- Uncontained
- L Wildfire Daily Fire Perimeter
- - - Trail

48°48'N

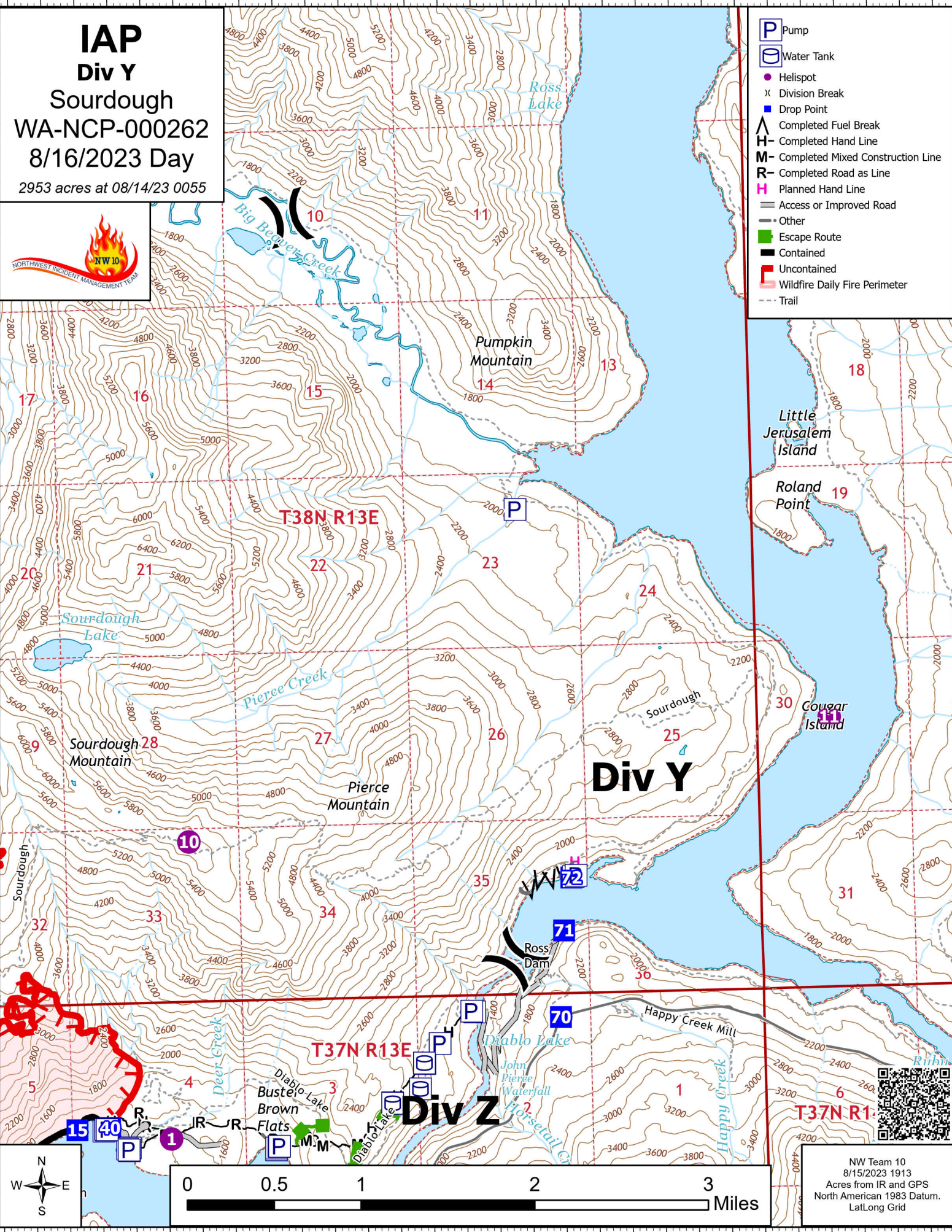
48°48'N

48°46'N

48°46'N

48°44'N

48°44'N



NW Team 10
 8/15/2023 1913
 Acres from IR and GPS
 North American 1983 Datum.
 Lat/Long Grid

121°8'W

121°6.01'W

121°4'W

121°2'W