

121°8'W

121°6.01'W

121°4'W

**IAP**  
**Div Z**  
 Sourdough  
 WA-NCP-000262  
 8/16/2023 Day  
 2953 acres at 08/14/23 0055



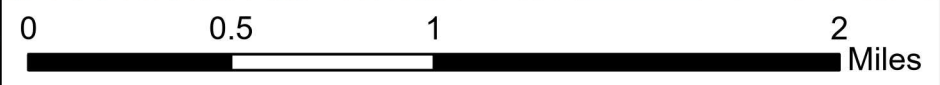
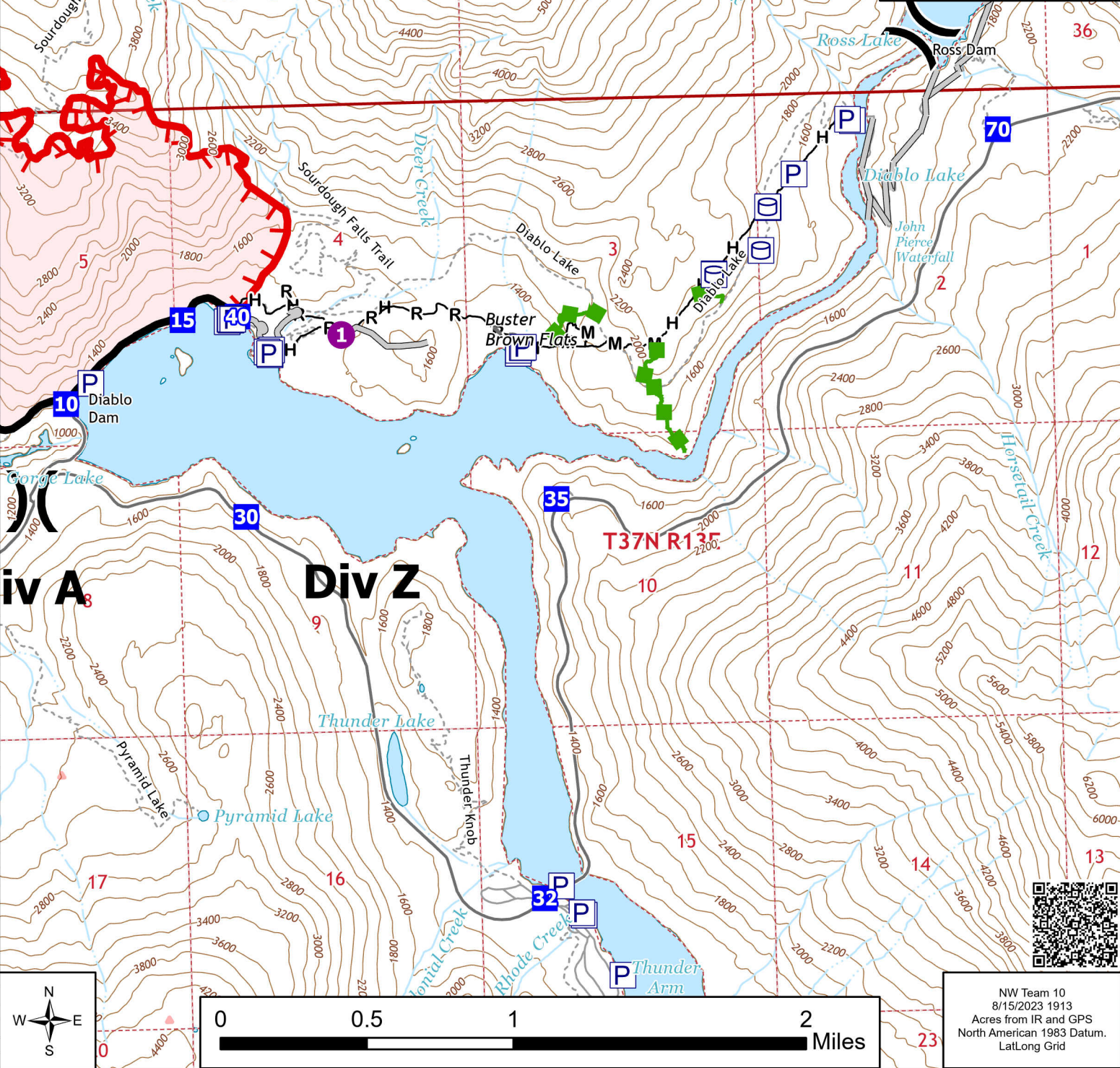
- Pump
- Water Tank
- Helispot
- Division Break
- Drop Point
- Completed Fuel Break
- Completed Hand Line
- Completed Mixed Construction Line
- Completed Road as Line
- Planned Hand Line
- Access or Improved Road
- Other
- Escape Route
- Contained
- Uncontained
- Wildfire Daily Fire Perimeter
- Trail

48°44'N

48°42'N

48°44'N

48°42'N



NW Team 10  
 8/15/2023 1913  
 Acres from IR and GPS  
 North American 1983 Datum.  
 Lat/Long Grid

121°8'W

121°6.01'W

121°4'W