

121°12'W 121°10'W 121°8'W 121°6.01'W

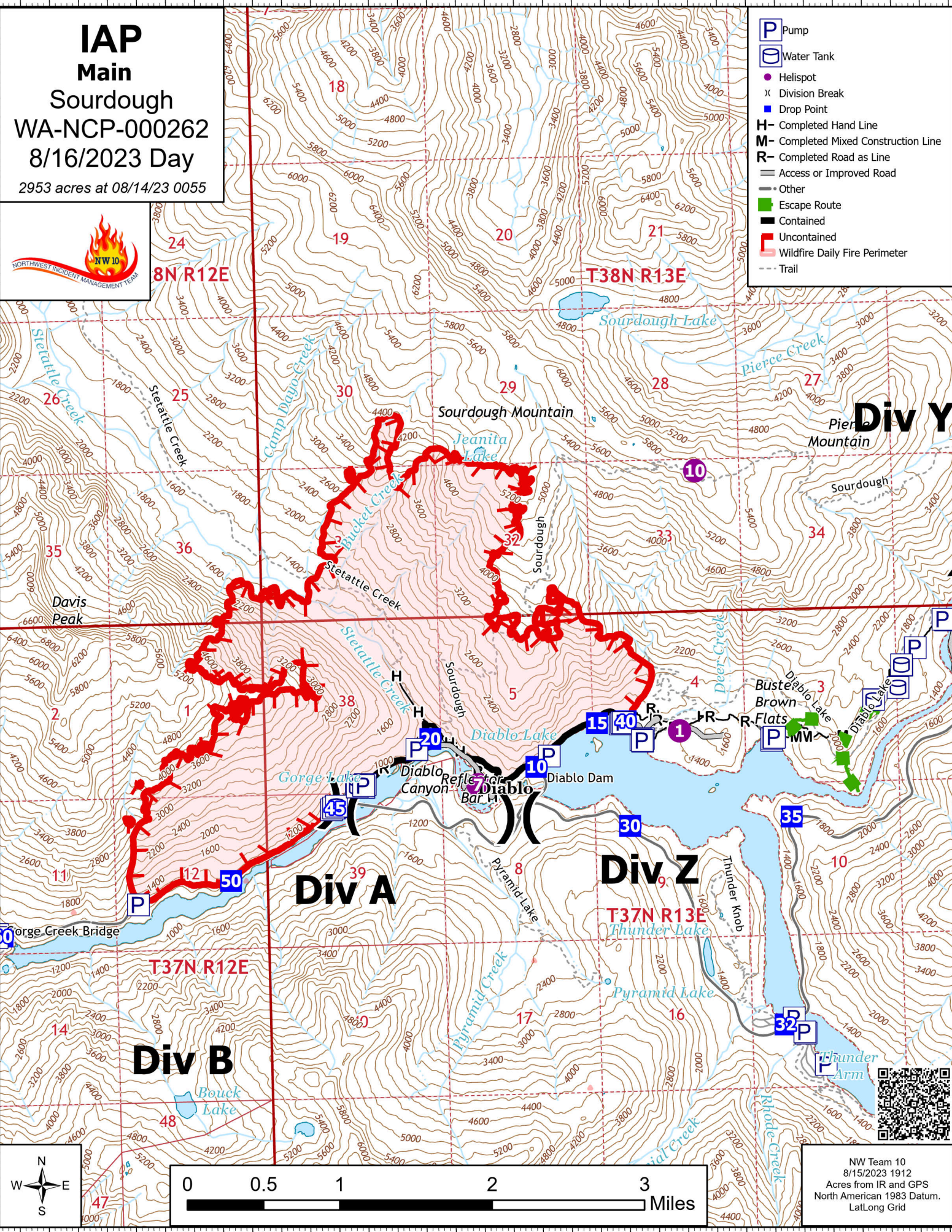
IAP
Main
Sourdough
WA-NCP-000262
8/16/2023 Day
2953 acres at 08/14/23 0055



- Pump
- Water Tank
- Helispot
- Division Break
- Drop Point
- Completed Hand Line
- Completed Mixed Construction Line
- Completed Road as Line
- Access or Improved Road
- Other
- Escape Route
- Contained
- Uncontained
- Wildfire Daily Fire Perimeter
- Trail

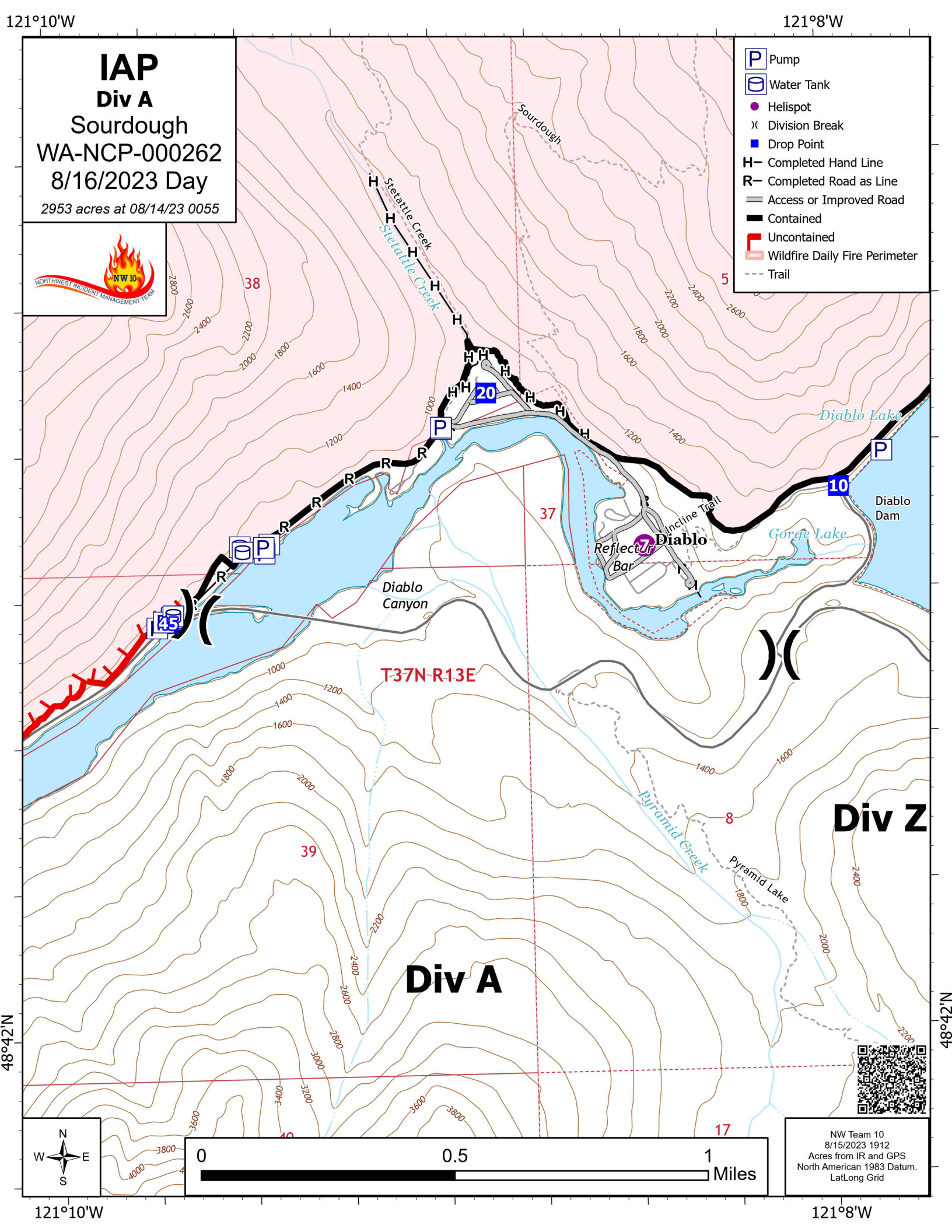
48°46'N
48°44'N
48°42'N

48°46'N
48°44'N
48°42'N



NW Team 10
8/15/2023 1912
Acres from IR and GPS
North American 1983 Datum.
Lat/Long Grid

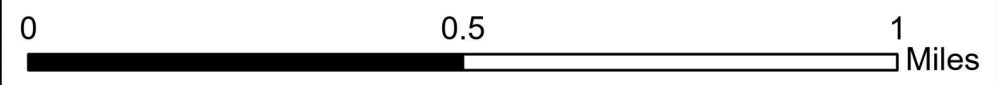
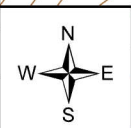
121°12'W 121°10'W 121°8'W 121°6.01'W



IAP
Div A
 Sourdough
 WA-NCP-000262
 8/16/2023 Day
 2953 acres at 08/14/23 0055



- Pump
- Water Tank
- Helispot
- Division Break
- Drop Point
- Completed Hand Line
- Completed Road as Line
- Access or Improved Road
- Contained
- Uncontained
- Wildfire Daily Fire Perimeter
- Trail



NW Team 10
 8/15/2023 1912
 Acres from IR and GPS
 North American 1983 Datum.
 LatLong Grid



121°10'W

48°42'N

38

39

40

2800

2600

2400

2200

2000

1800

1600

1400

1200

1000

800

600

400

200

0

200

400

600

800

1000

1200

1400

1600

1800

2000

2200

2400

2600

2800

3000

3200

3400

3600

3800

4000

Sourdough

Stetattle Creek
 Stetattle Creek

Diablo Lake

Gorge Lake

Reflect Jr Bar

Incline Trail

Diablo Dam

T37N-R13E

Diablo Canyon

Div A

Div Z

8

Pyramid Creek

Pyramid Lake

17

48°42'N

121°10'W

121°8'W

121°8'W

121°6.01'W

121°4'W

IAP
Div Z
 Sourdough
 WA-NCP-000262
 8/16/2023 Day
 2953 acres at 08/14/23 0055

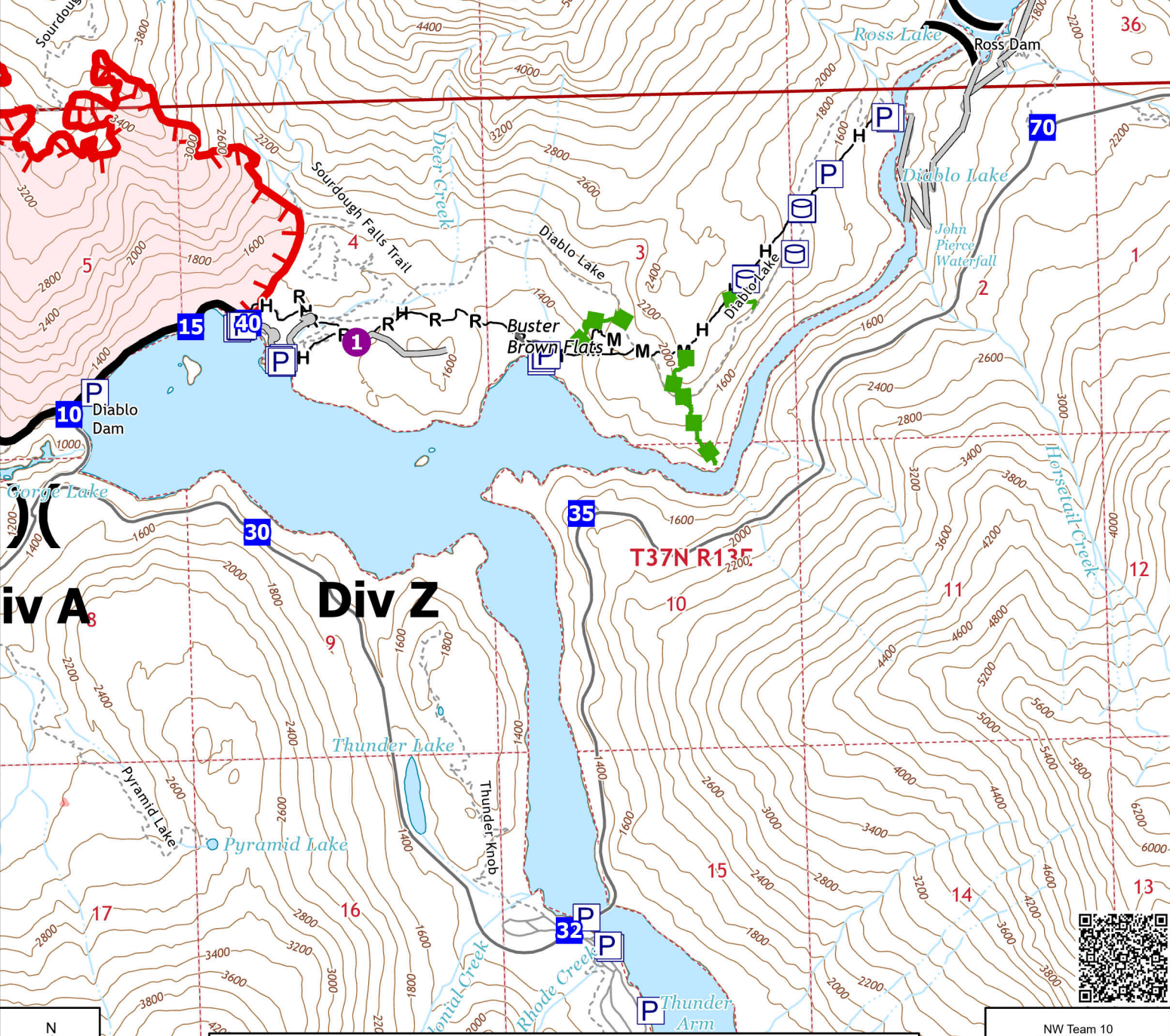


- P Pump
- O Water Tank
- Helispot
- ⊗ Division Break
- Drop Point
- ▲ Completed Fuel Break
- Completed Hand Line
- Completed Mixed Construction Line
- Completed Road as Line
- Planned Hand Line
- Access or Improved Road
- Other
- █ Escape Route
- █ Contained
- █ Uncontained
- █ Wildfire Daily Fire Perimeter
- Trail

Div Y

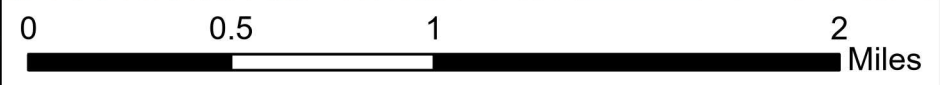
T38N R13E

T37N R13E



Div A

Div Z



NW Team 10
 8/15/2023 1912
 Acres from IR and GPS
 North American 1983 Datum.
 Lat/Long Grid

121°8'W

121°6.01'W

121°4'W

48°44'N

48°44'N

48°42'N

48°42'N

121°6.01'W

121°4'W

121°2'W

48°48'N

48°48'N

IAP
Div Y
 Sourdough
 WA-NCP-000262
 8/16/2023 Day
 2953 acres at 08/14/23 0055



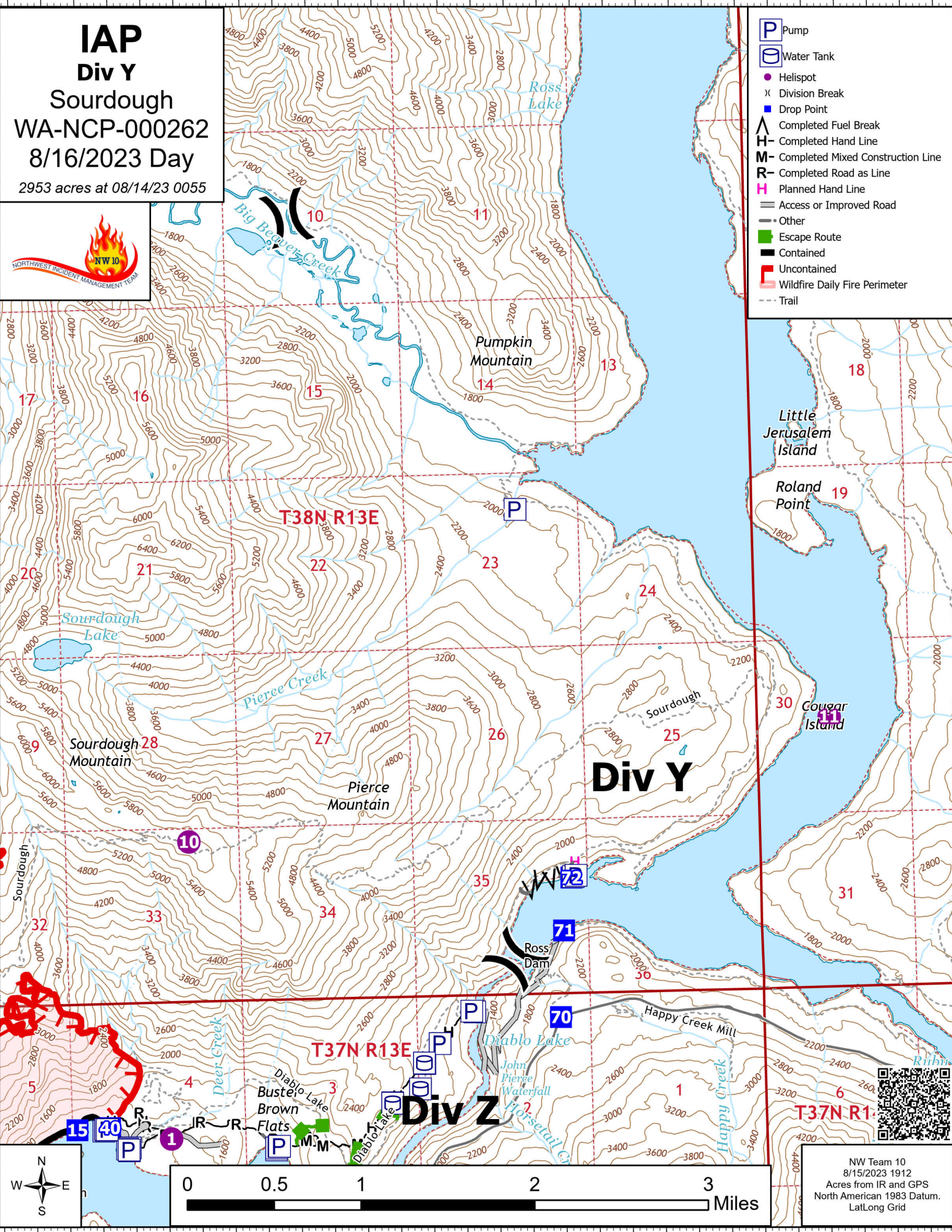
- Pump
- Water Tank
- Helispot
- Division Break
- Drop Point
- Completed Fuel Break
- Completed Hand Line
- Completed Mixed Construction Line
- Completed Road as Line
- Planned Hand Line
- Access or Improved Road
- Other
- Escape Route
- Contained
- Uncontained
- Wildfire Daily Fire Perimeter
- Trail

48°46'N

48°46'N

48°44'N

48°44'N



NW Team 10
 8/15/2023 1912
 Acres from IR and GPS
 North American 1983 Datum.
 Lat/Long Grid

121°8'W

121°6.01'W

121°4'W

121°2'W

121°16'W

121°14'W

121°12'W

121°10'W

IAP
Div B
 Sourdough
 WA-NCP-000262
 8/16/2023 Day
 2953 acres at 08/14/23 0055



- Pump
- Water Tank
- Helispot
- Division Break
- Incident Command Post
- Drop Point
- Completed Hand Line
- Completed Road as Line
- Access or Improved Road
- Contained
- Uncontained
- Wildfire Daily Fire Perimeter
- Trail

48°44'N

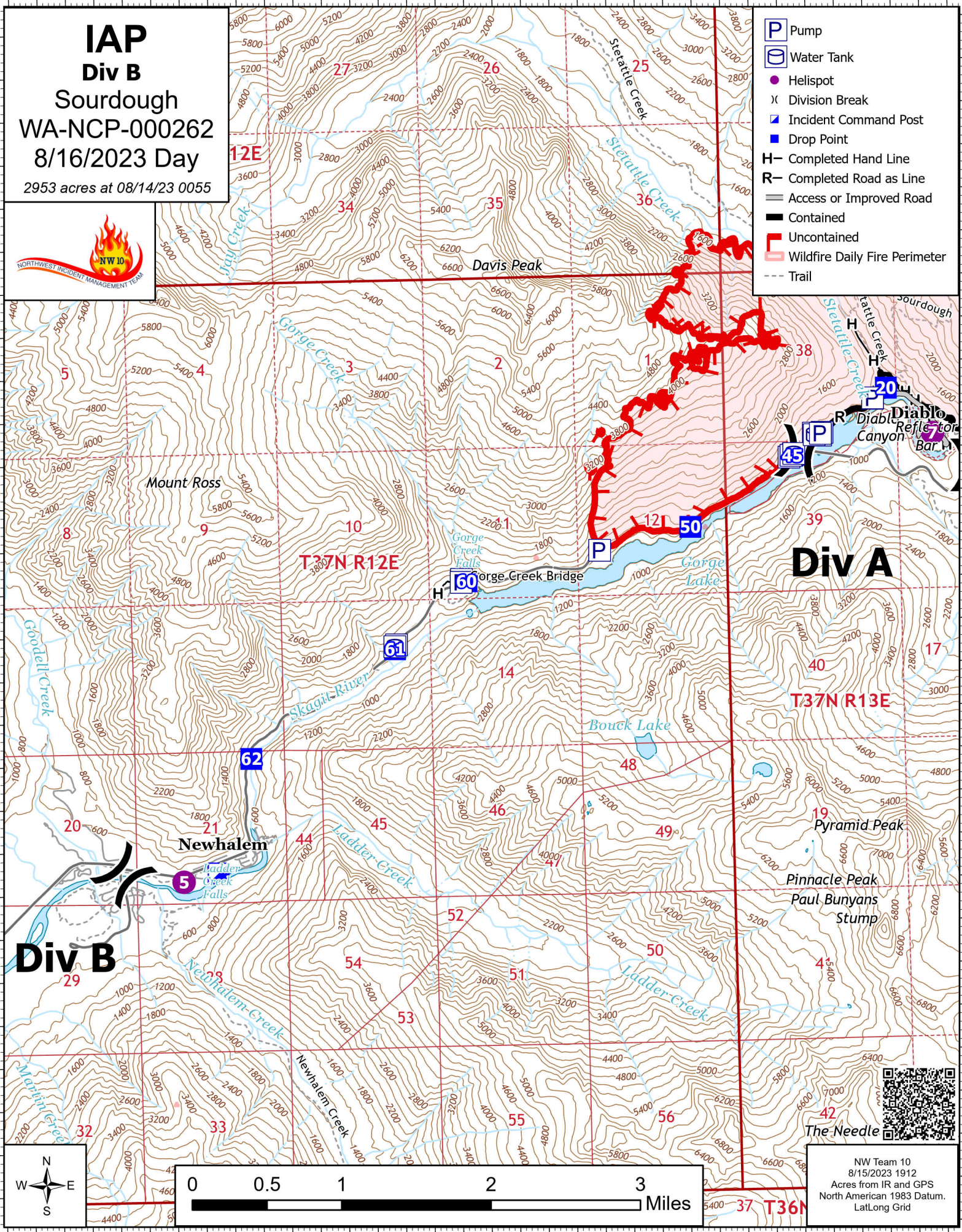
48°44'N

48°42'N

48°42'N

48°40'N

48°40'N



NW Team 10
 8/15/2023 1912
 Acres from IR and GPS
 North American 1983 Datum.
 Lat/Long Grid

121°16'W

121°14'W

121°12'W

121°10'W