

Operations

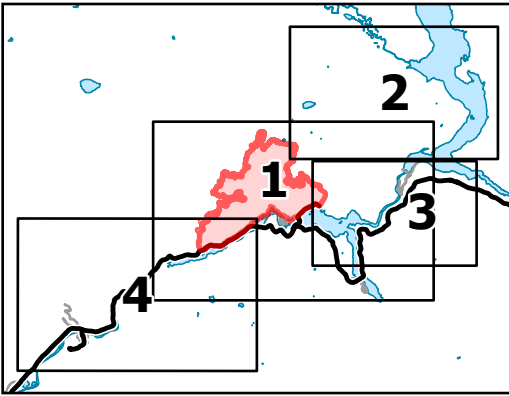
Sourdough

WA-NCP-000262

8/16/2023 Day

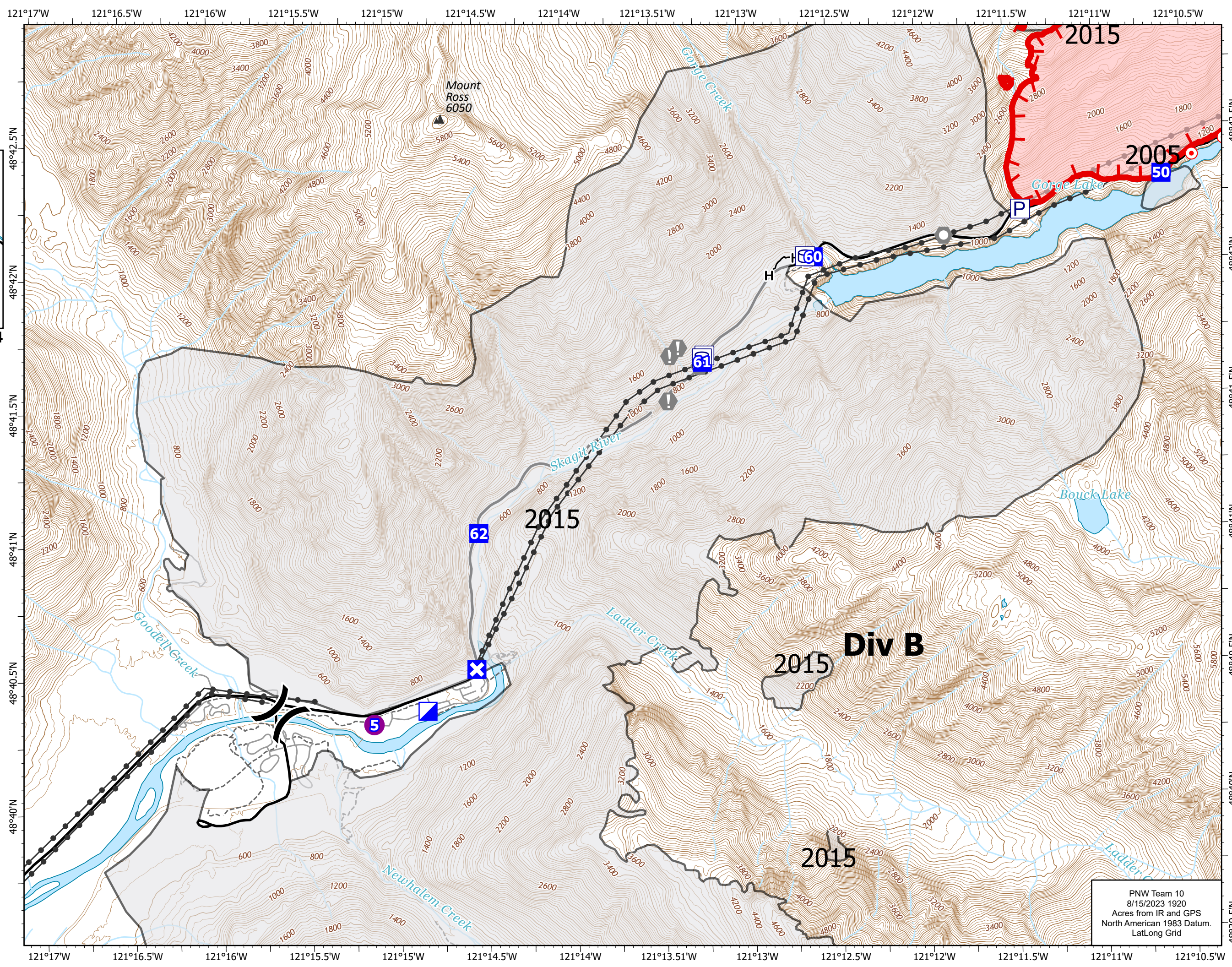
2953 acres at 08/14/23 0055

0 0.25 0.5 Miles



Page Number: 4

- Helispot
-) (Division Break
- ▣ Incident Command Post
- Drop Point
- ⊠ Closure
- Hot Spot - Spot Fire
- Landmark
- ▭ Wildfire Daily Fire Perimeter
- H— Completed Hand Line
- ▬ Uncontained
- ⚠ Historic Structure
- Transmission Lines
- ▭ Fire History
- - - Trail
- Label_Lines
- ▲ Mountain Peaks (ft)



PNW Team 10
8/15/2023 1920
Acres from IR and GPS
North American 1983 Datum.
Lat/Long Grid