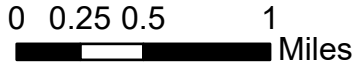


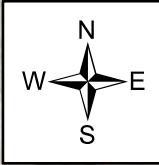
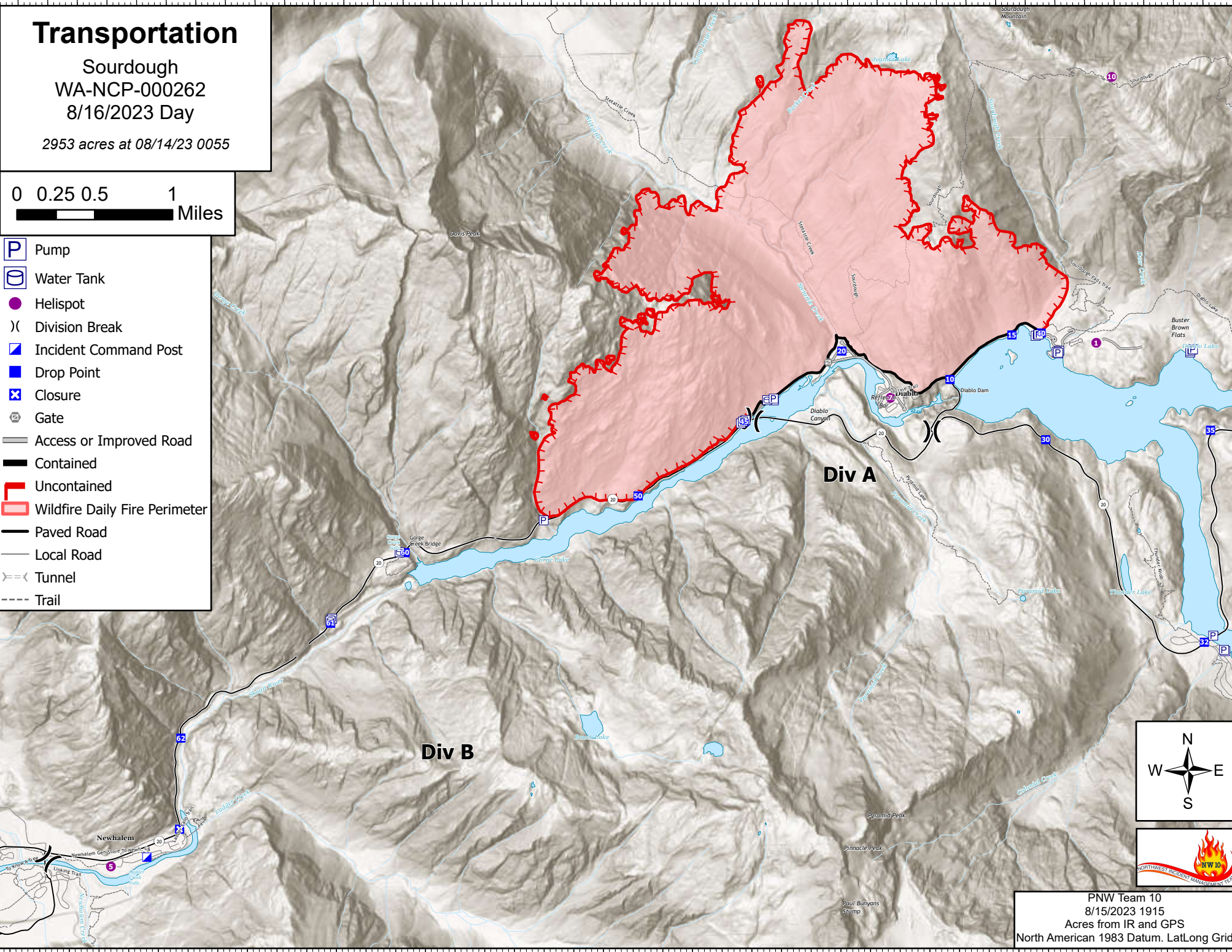
# Transportation

Sourdough  
WA-NCP-000262  
8/16/2023 Day

2953 acres at 08/14/23 0055



- Pump
- Water Tank
- Helispot
- Division Break
- Incident Command Post
- Drop Point
- Closure
- Gate
- Access or Improved Road
- Contained
- Uncontained
- Wildfire Daily Fire Perimeter
- Paved Road
- Local Road
- Tunnel
- Trail



PNW Team 10  
8/15/2023 1915  
Acres from IR and GPS  
North American 1983 Datum. LatLong Grid