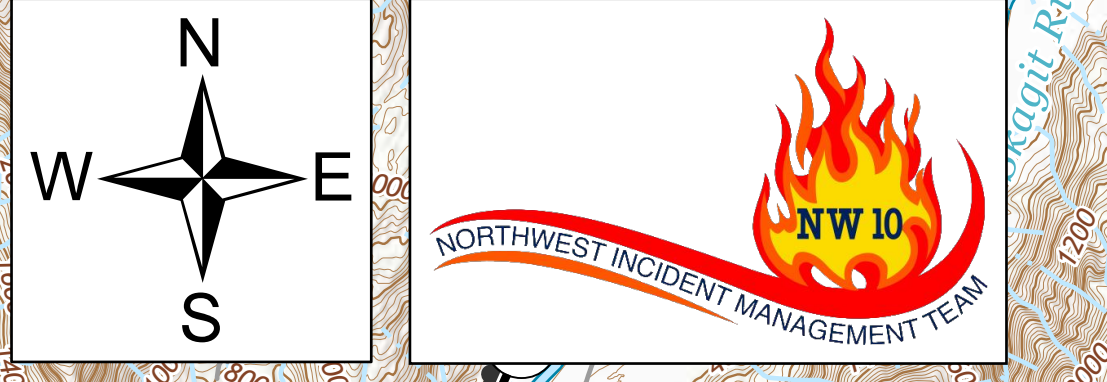
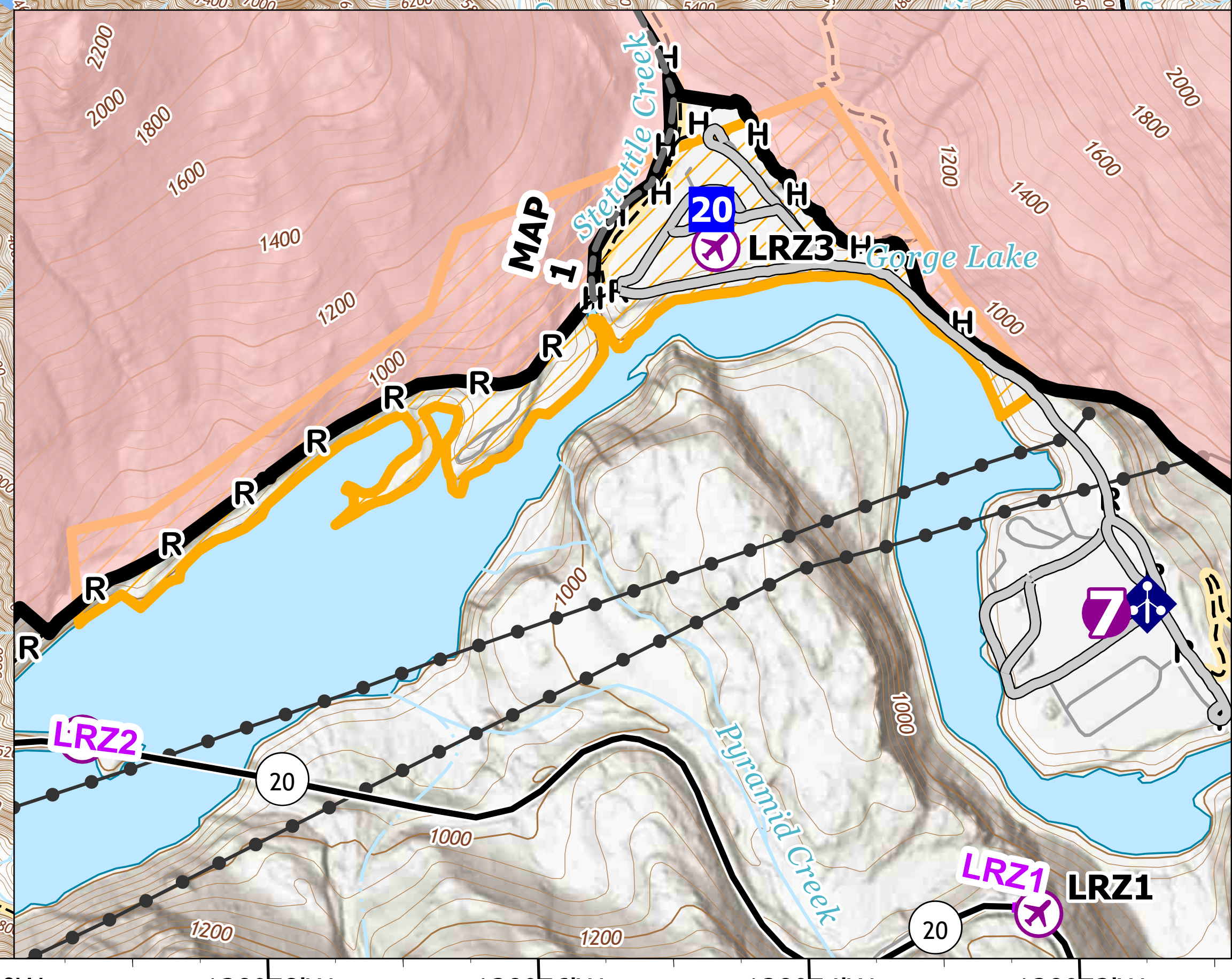
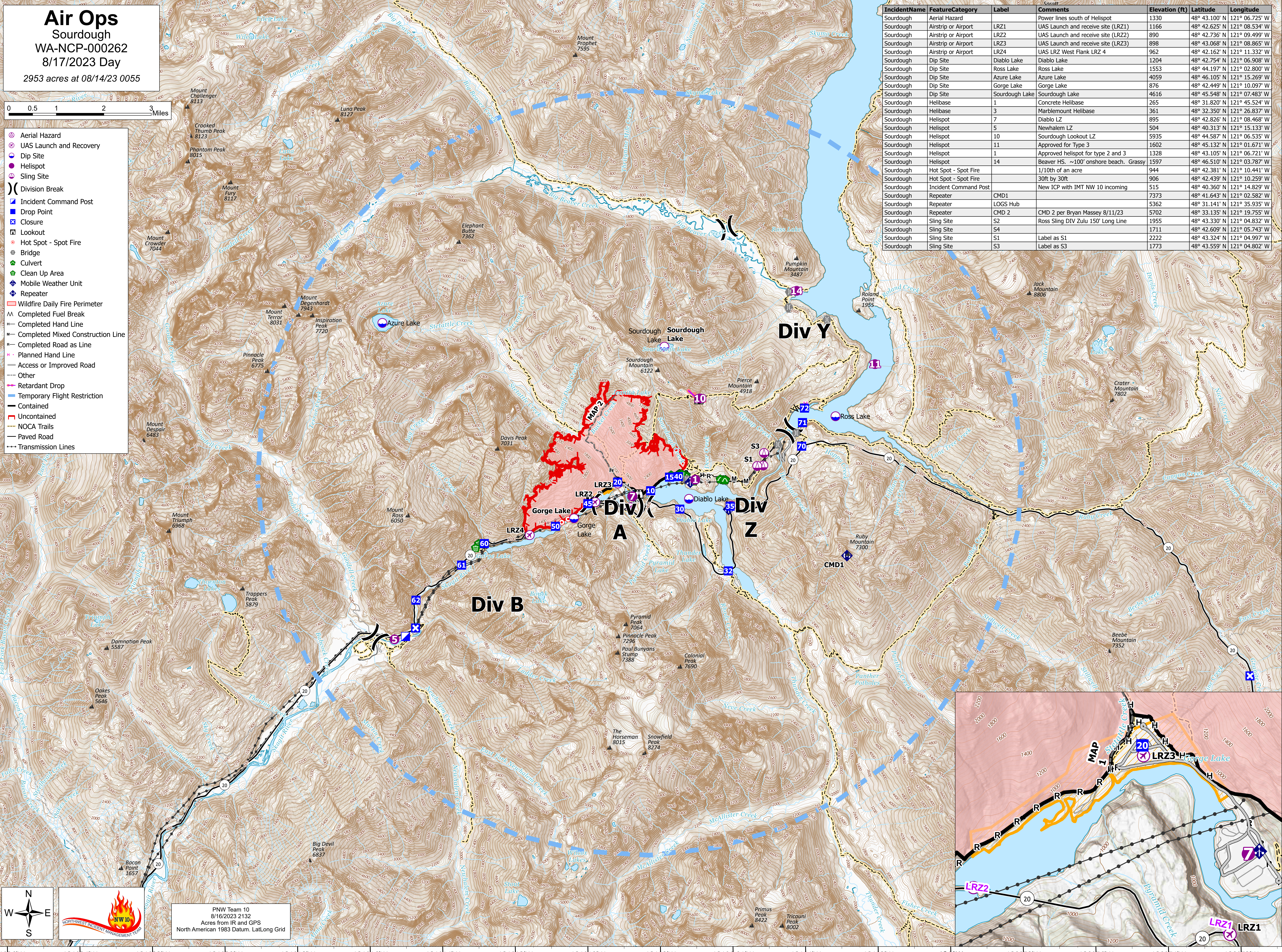


Air Ops
Sourdough
 WA-NCP-000262
 8/17/2023 Day
 2953 acres at 08/14/23 0055



- ⊗ Aerial Hazard
- ⊗ UAS Launch and Recovery
- ⊗ Dip Site
- ⊗ Helispot
- ⊗ Sling Site
- ⌋ Division Break
- Incident Command Post
- Drop Point
- Closure
- ⌋ Lookout
- ⊗ Hot Spot - Spot Fire
- Bridge
- Culvert
- Clean Up Area
- ⬇ Mobile Weather Unit
- ⬇ Repeater
- ▭ Wildfire Daily Fire Perimeter
- ▭ Completed Fuel Break
- ▭ Completed Hand Line
- ▭ Completed Mixed Construction Line
- ▭ Completed Road as Line
- ▭ Planned Hand Line
- ▭ Access or Improved Road
- ▭ Other
- ▭ Retardant Drop
- ▭ Temporary Flight Restriction
- ▭ Contained
- ▭ Uncontained
- ▭ NOCA Trails
- ▭ Paved Road
- ▭ Transmission Lines

IncidentName	FeatureCategory	Label	Comments	Elevation (ft)	Latitude	Longitude
Sourdough	Aerial Hazard		Power lines south of Helispot	1330	48° 43.100' N	121° 06.725' W
Sourdough	Airstrip or Airport	LRZ1	UAS Launch and receive site (LRZ1)	1166	48° 42.625' N	121° 08.534' W
Sourdough	Airstrip or Airport	LRZ2	UAS Launch and receive site (LRZ2)	890	48° 42.736' N	121° 09.499' W
Sourdough	Airstrip or Airport	LRZ3	UAS Launch and receive site (LRZ3)	898	48° 43.068' N	121° 08.865' W
Sourdough	Airstrip or Airport	LRZ4	UAS LRZ West Flank LRZ 4	962	48° 42.162' N	121° 11.332' W
Sourdough	Dip Site	Diablo Lake	Diablo Lake	1204	48° 42.754' N	121° 06.908' W
Sourdough	Dip Site	Ross Lake	Ross Lake	1553	48° 44.197' N	121° 02.800' W
Sourdough	Dip Site	Azure Lake	Azure Lake	4059	48° 46.105' N	121° 15.269' W
Sourdough	Dip Site	Gorge Lake	Gorge Lake	876	48° 42.449' N	121° 10.097' W
Sourdough	Dip Site	Sourdough Lake	Sourdough Lake	4616	48° 45.548' N	121° 07.483' W
Sourdough	Helibase	1	Concrete Helibase	265	48° 31.820' N	121° 45.524' W
Sourdough	Helibase	3	Marblemount Helibase	361	48° 32.350' N	121° 26.837' W
Sourdough	Helispot	7	Diablo LZ	895	48° 42.826' N	121° 08.468' W
Sourdough	Helispot	5	Newhalem LZ	504	48° 40.313' N	121° 15.133' W
Sourdough	Helispot	10	Sourdough Lookout LZ	5935	48° 44.587' N	121° 06.535' W
Sourdough	Helispot	11	Approved for Type 3	1602	48° 45.132' N	121° 01.671' W
Sourdough	Helispot	1	Approved helispot for type 2 and 3	1328	48° 43.105' N	121° 06.721' W
Sourdough	Helispot	14	Beaver HS. ~100' onshore beach. Grassy	1597	48° 46.510' N	121° 03.787' W
Sourdough	Hot Spot - Spot Fire		1/10th of an acre	944	48° 42.381' N	121° 10.441' W
Sourdough	Hot Spot - Spot Fire		30ft by 30ft	906	48° 42.439' N	121° 10.259' W
Sourdough	Incident Command Post		New ICP with IMT NW 10 incoming	515	48° 40.360' N	121° 14.829' W
Sourdough	Repeater	CMD1		7373	48° 41.643' N	121° 02.582' W
Sourdough	Repeater	LOGS Hub		5362	48° 31.141' N	121° 35.935' W
Sourdough	Repeater	CMD 2	CMD 2 per Bryan Massey 8/11/23	5702	48° 33.135' N	121° 19.755' W
Sourdough	Sling Site	S2	Ross Sling DIV Zulu 150' Long Line	1955	48° 43.330' N	121° 04.832' W
Sourdough	Sling Site	S4		1711	48° 42.609' N	121° 05.743' W
Sourdough	Sling Site	S1	Label as S1	2222	48° 43.324' N	121° 04.997' W
Sourdough	Sling Site	S3	Label as S3	1773	48° 43.559' N	121° 04.802' W



PNW Team 10
 8/16/2023 2132
 Acres from IR and GPS
 North American 1983 Datum, Lat/Long Grid