

121°16'W

121°14'W

121°12'W

121°10'W

IAP
Div B
 Sourdough
 WA-NCP-000262
 8/17/2023 Day
 2953 acres at 08/14/23 0055



- Pump
- Water Tank
- Helispot
- Division Break
- Incident Command Post
- Drop Point
- Completed Hand Line
- Completed Road as Line
- Access or Improved Road
- Contained
- Uncontained
- Wildfire Daily Fire Perimeter
- Trail

48°44'N

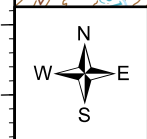
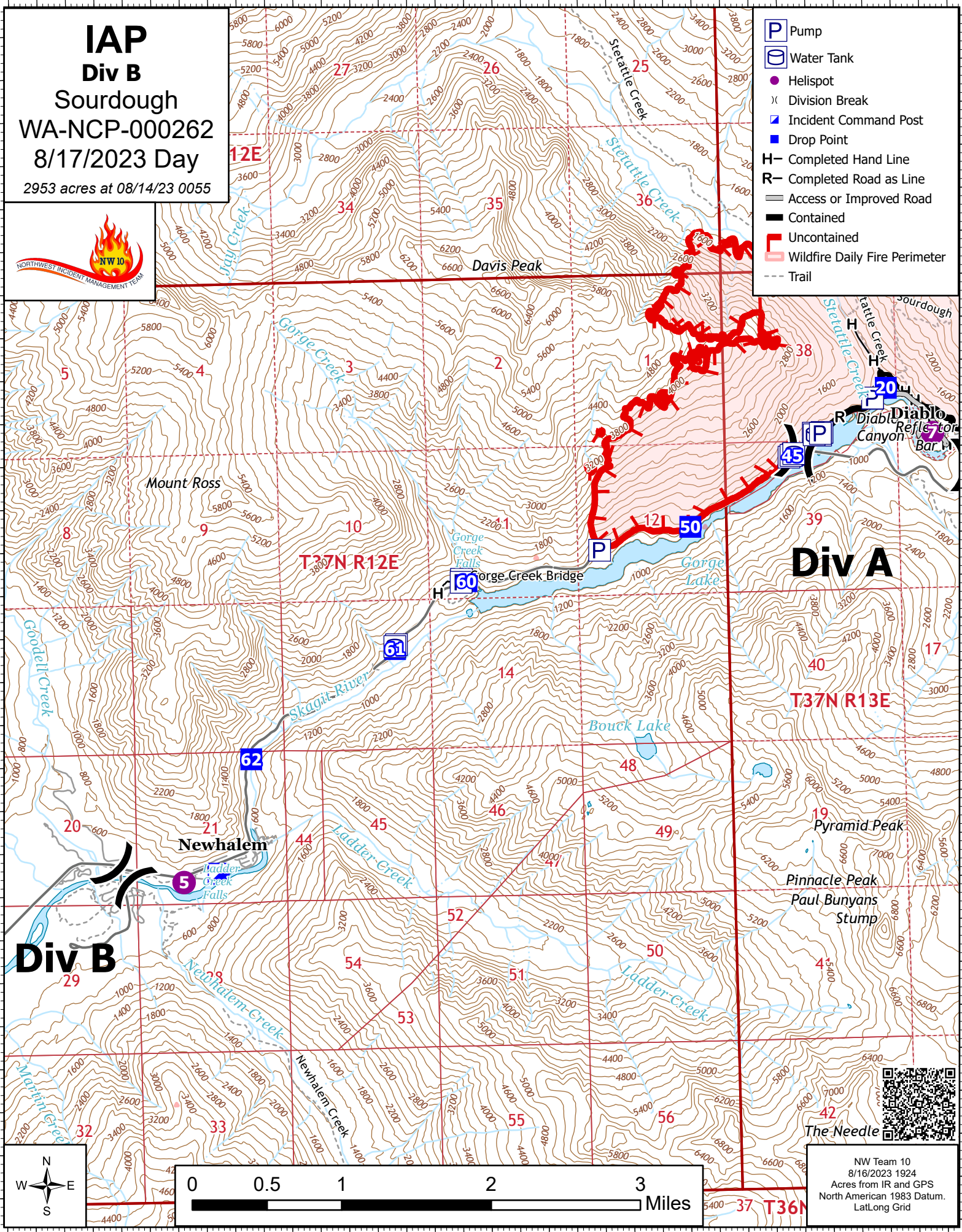
48°44'N

48°42'N

48°42'N

48°40'N

48°40'N



NW Team 10
 8/16/2023 1924
 Acres from IR and GPS
 North American 1983 Datum.
 Lat/Long Grid

121°16'W

121°14'W

121°12'W

121°10'W