

121°8'W

121°6.01'W

121°4'W

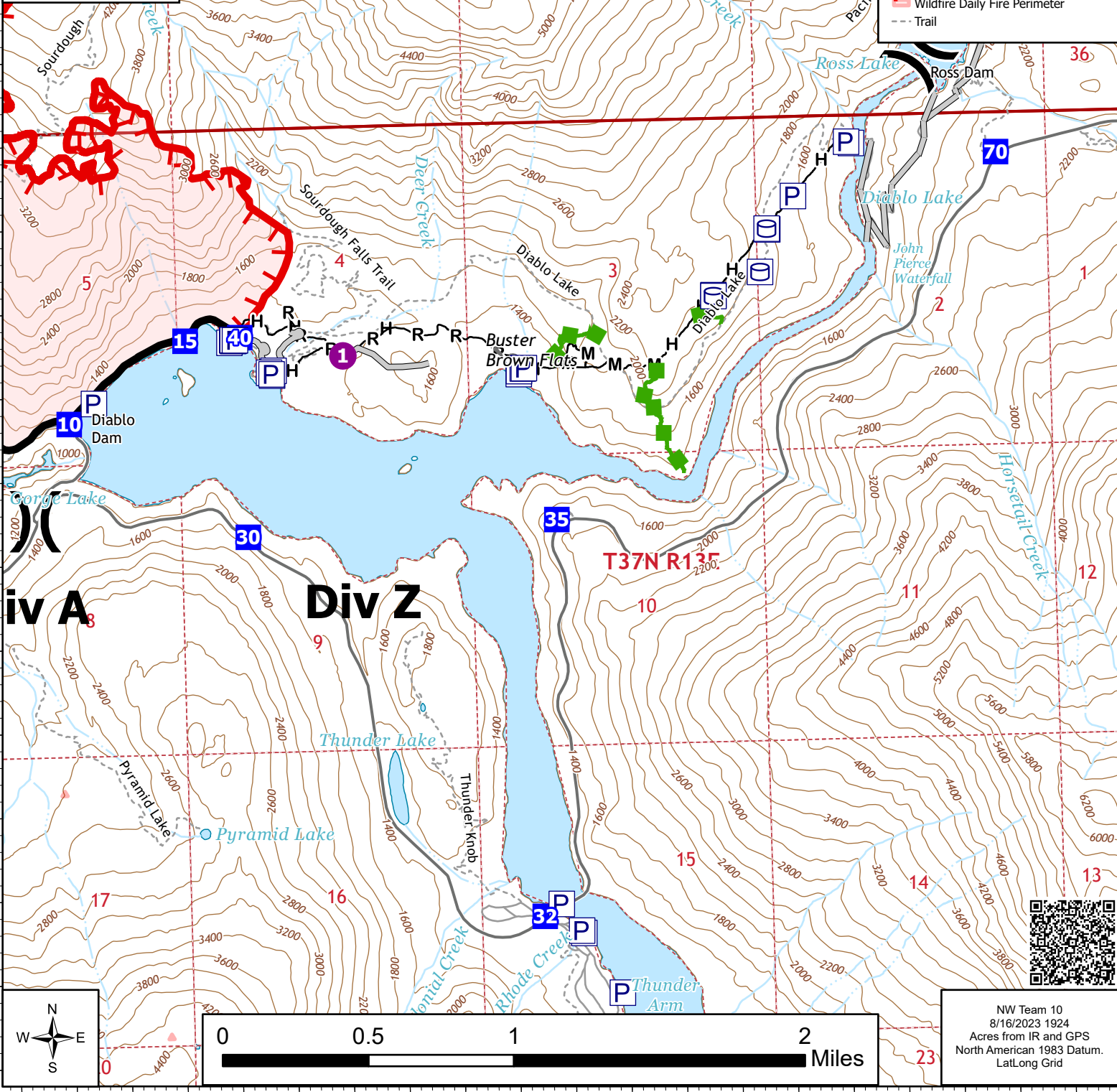
IAP
Div Z
 Sourdough
 WA-NCP-000262
 8/17/2023 Day
 2953 acres at 08/14/23 0055



- Pump
- Water Tank
- Helispot
- Division Break
- Drop Point
- Completed Fuel Break
- Completed Hand Line
- Completed Mixed Construction Line
- Completed Road as Line
- Planned Hand Line
- Access or Improved Road
- Other
- Escape Route
- Retardant Drop
- Contained
- Uncontained
- Wildfire Daily Fire Perimeter
- Trail

48°44'N

48°44'N



Div A

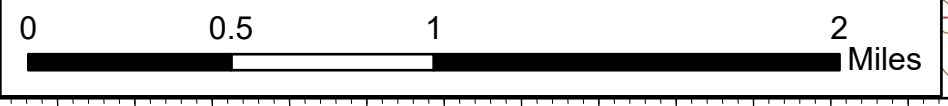
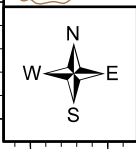
Div Z

Div Y

121°8'W

121°6.01'W

121°4'W



NW Team 10
 8/16/2023 1924
 Acres from IR and GPS
 North American 1983 Datum.
 Lat/Long Grid

