

121°12'W 121°10'W 121°8'W 121°6.01'W

IAP
Main
Sourdough
WA-NCP-000262
8/17/2023 Day
2953 acres at 08/14/23 0055



- Pump
- Water Tank
- Helispot
- Division Break
- Drop Point
- Completed Hand Line
- Completed Mixed Construction Line
- Completed Road as Line
- Access or Improved Road
- Other
- Escape Route
- Retardant Drop
- Contained
- Uncontained
- Wildfire Daily Fire Perimeter
- Trail

48°46'N

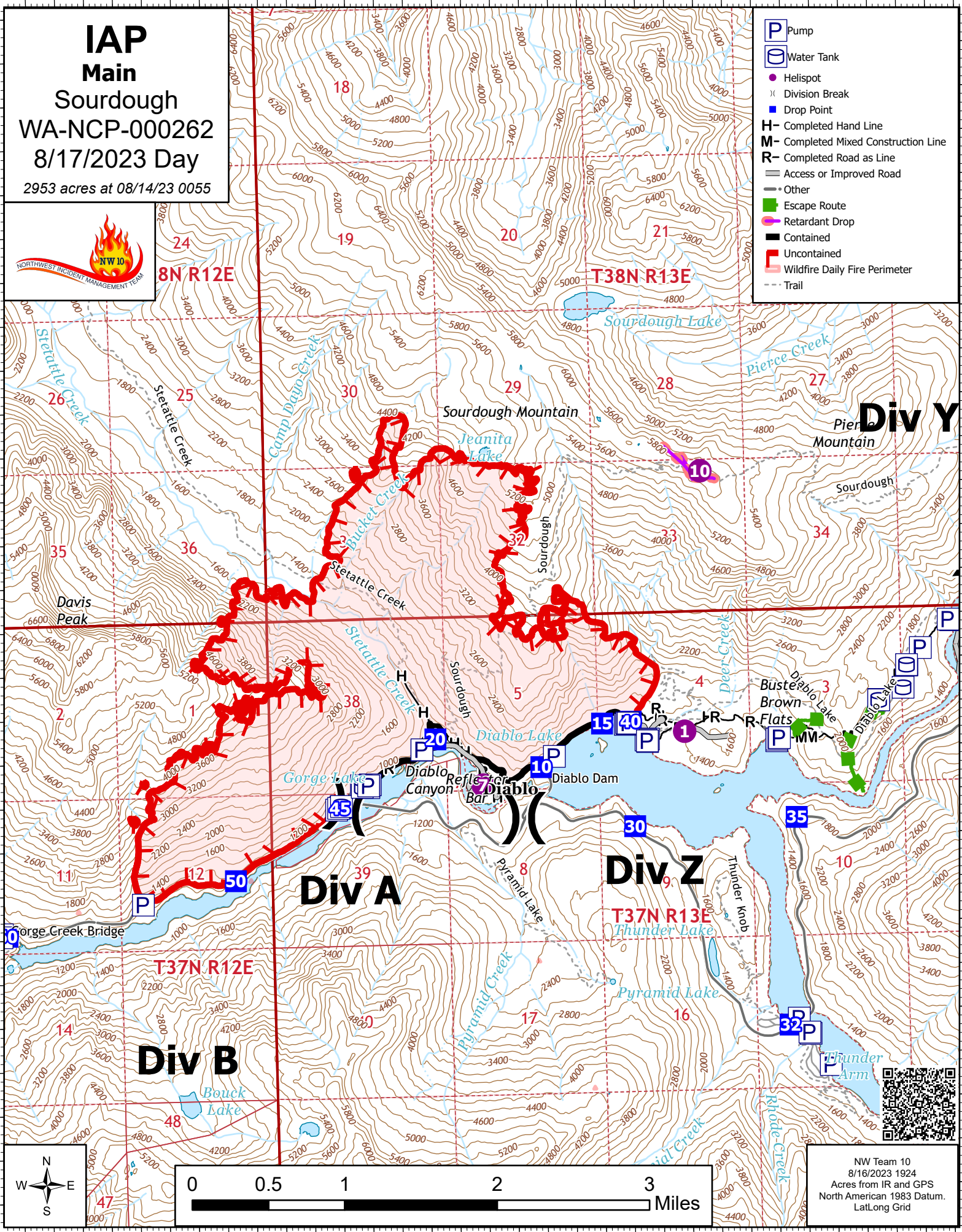
48°46'N

48°44'N

48°44'N

48°42'N

48°42'N



121°12'W 121°10'W 121°8'W 121°6.01'W



NW Team 10
8/16/2023 1924
Acres from IR and GPS
North American 1983 Datum.
Lat/Long Grid

