

121°12'W

121°10'W

121°8'W

121°6.01'W

**IAP**  
**Main**  
 Sourdough  
 WA-NCP-000262  
 8/17/2023 Day  
 2953 acres at 08/14/23 0055



- Pump
- Water Tank
- Helispot
- Division Break
- Drop Point
- Completed Hand Line
- Completed Mixed Construction Line
- Completed Road as Line
- Access or Improved Road
- Other
- Escape Route
- Retardant Drop
- Contained
- Uncontained
- Wildfire Daily Fire Perimeter
- Trail

48°46'N

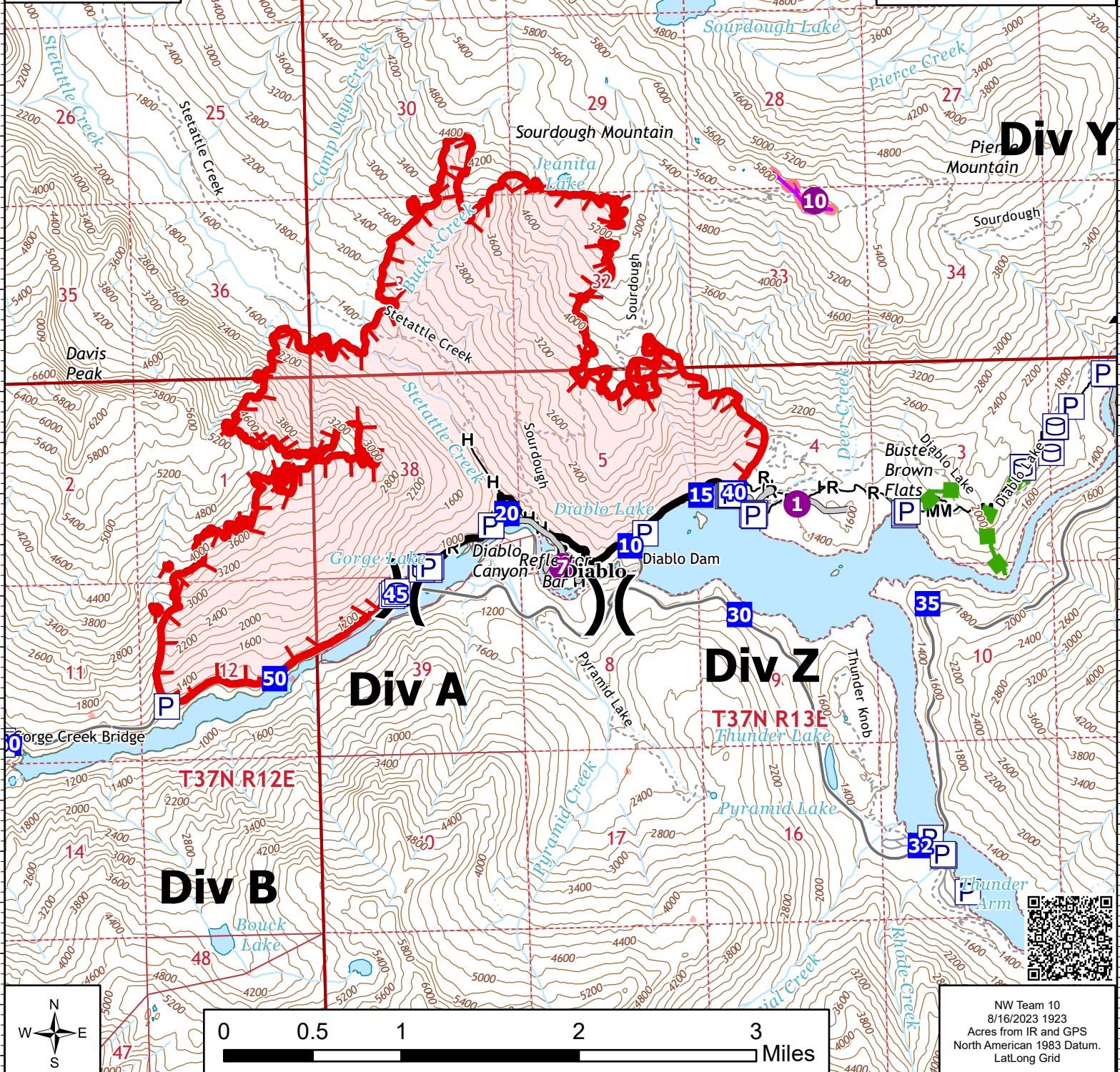
48°46'N

48°44'N

48°44'N

48°42'N

48°42'N



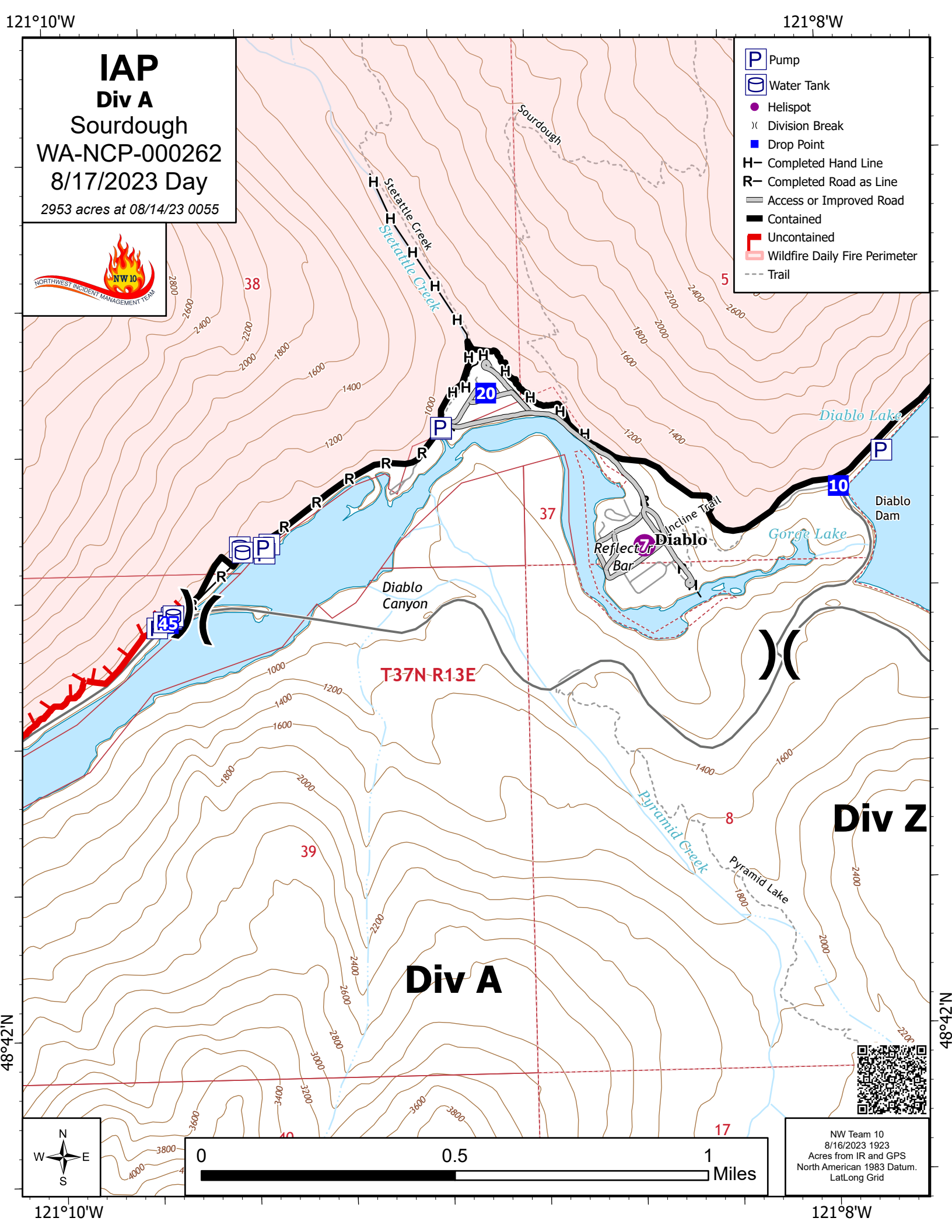
NW Team 10  
 8/16/2023 1923  
 Acres from IR and GPS  
 North American 1983 Datum.  
 Lat/Long Grid

121°12'W

121°10'W

121°8'W

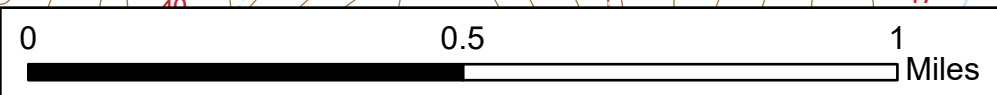
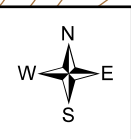
121°6.01'W



**IAP**  
**Div A**  
 Sourdough  
 WA-NCP-000262  
 8/17/2023 Day  
 2953 acres at 08/14/23 0055



- P Pump
- WP Water Tank
- Helispot
- X Division Break
- Drop Point
- H** Completed Hand Line
- R** Completed Road as Line
- Access or Improved Road
- Contained
- Uncontained
- Wildfire Daily Fire Perimeter
- Trail



NW Team 10  
 8/16/2023 1923  
 Acres from IR and GPS  
 North American 1983 Datum.  
 LatLong Grid

121°10'W

121°8'W

48°42'N

48°42'N

**Div A**

**Div Z**

T37N-R13E

Stetattle Creek  
 Stetattle Creek

Sourdough

Diablo Lake

Gorge Lake

Diablo  
 Reflect Jr Bar

Incine Trail

Diablo Canyon

Diablo Dam

Pyramid Creek

Pyramid Lake

38

37

39

8

17

5

2800

2600

2400

2200

2000

1800

1600

1400

1200

1000

800

600

400

200

0

-200

-400

-600

-800

-1000

-1200

-1400

-1600

-1800

-2000

-2200

-2400

-2600

-2800

-3000

-3200

-3400

-3600

-3800

-4000

121°8'W

121°6.01'W

121°4'W

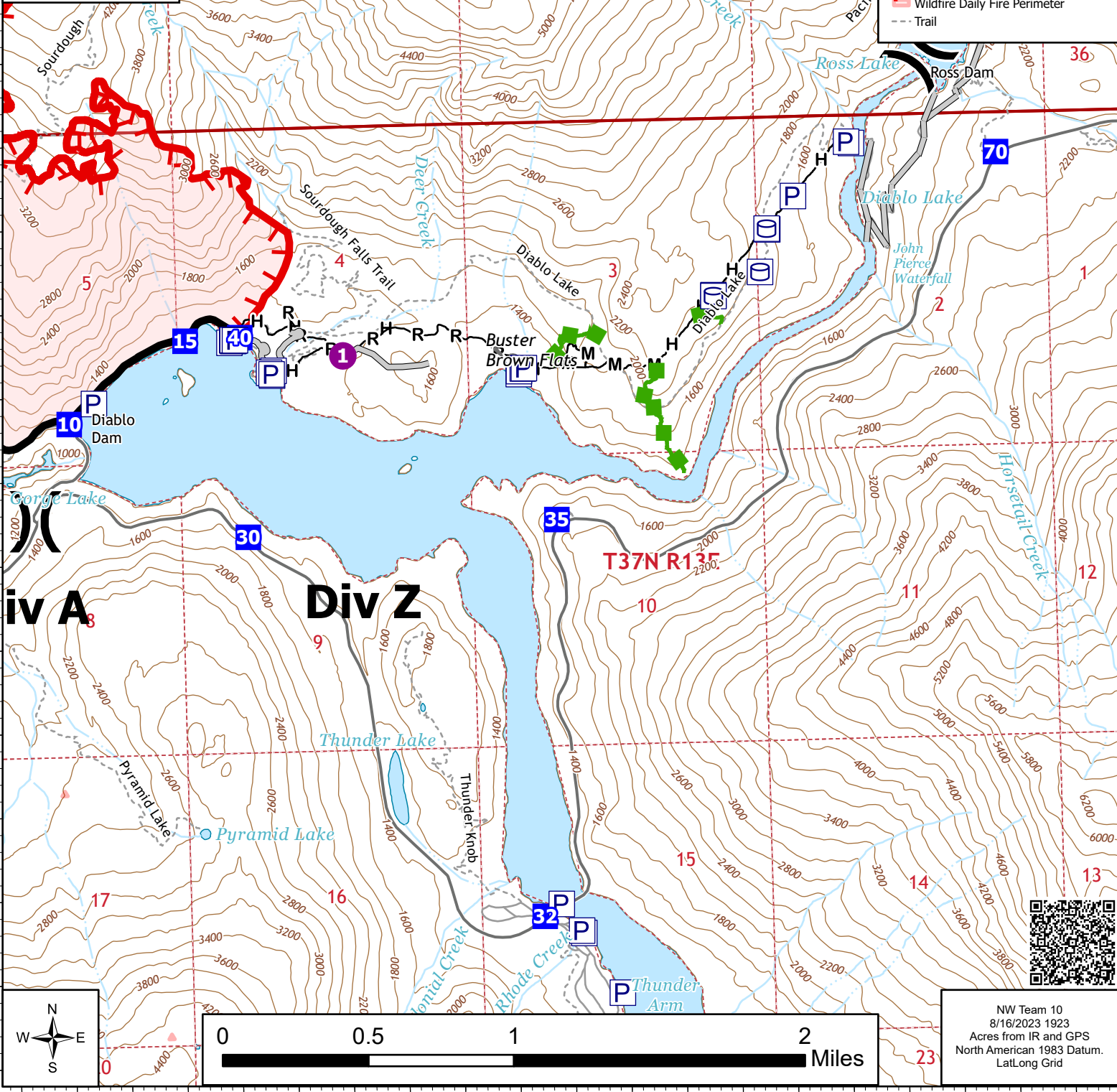
**IAP**  
**Div Z**  
 Sourdough  
 WA-NCP-000262  
 8/17/2023 Day  
 2953 acres at 08/14/23 0055



- P Pump
- O Water Tank
- Helispot
- ⌘ Division Break
- Drop Point
- ▲ Completed Fuel Break
- Completed Hand Line
- Completed Mixed Construction Line
- Completed Road as Line
- Planned Hand Line
- Access or Improved Road
- Other
- █ Escape Route
- █ Retardant Drop
- █ Contained
- █ Uncontained
- █ Wildfire Daily Fire Perimeter
- Trail

48°44'N

48°44'N



**Div A**

**Div Z**

**Div Y**

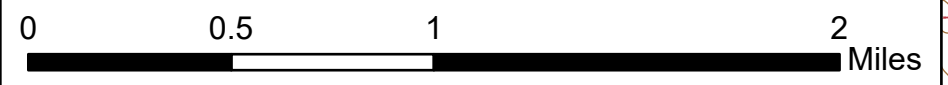
48°42'N

48°42'N

121°8'W

121°6.01'W

121°4'W



NW Team 10  
 8/16/2023 1923  
 Acres from IR and GPS  
 North American 1983 Datum.  
 Lat/Long Grid

121°6.01'W

121°4'W

121°2'W

48°48'N

48°48'N

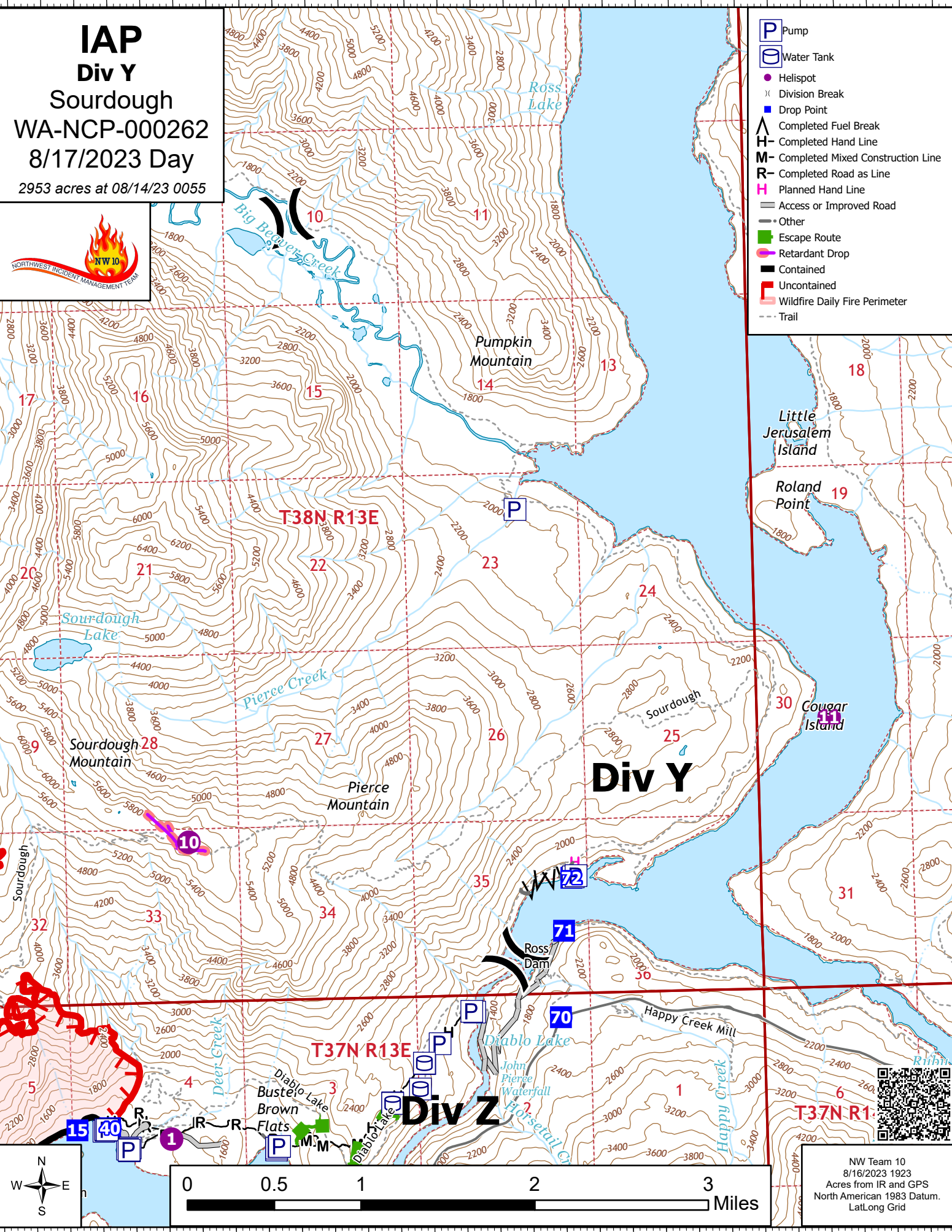
**IAP**  
**Div Y**  
Sourdough  
WA-NCP-000262  
8/17/2023 Day  
2953 acres at 08/14/23 0055



- Pump
- Water Tank
- Helispot
- Division Break
- Drop Point
- Completed Fuel Break
- Completed Hand Line
- Completed Mixed Construction Line
- Completed Road as Line
- Planned Hand Line
- Access or Improved Road
- Other
- Escape Route
- Retardant Drop
- Contained
- Uncontained
- Wildfire Daily Fire Perimeter
- Trail

48°46'N

48°46'N



48°44'N

48°44'N



NW Team 10  
8/16/2023 1923  
Acres from IR and GPS  
North American 1983 Datum.  
Lat/Long Grid

121°8'W

121°6.01'W

121°4'W

121°2'W

121°16'W

121°14'W

121°12'W

121°10'W

**IAP**  
**Div B**  
 Sourdough  
 WA-NCP-000262  
 8/17/2023 Day  
 2953 acres at 08/14/23 0055



- P Pump
- W Water Tank
- Helispot
- X Division Break
- Incident Command Post
- Drop Point
- H** Completed Hand Line
- R** Completed Road as Line
- Access or Improved Road
- Contained
- Uncontained
- Wildfire Daily Fire Perimeter
- Trail

48°44'N

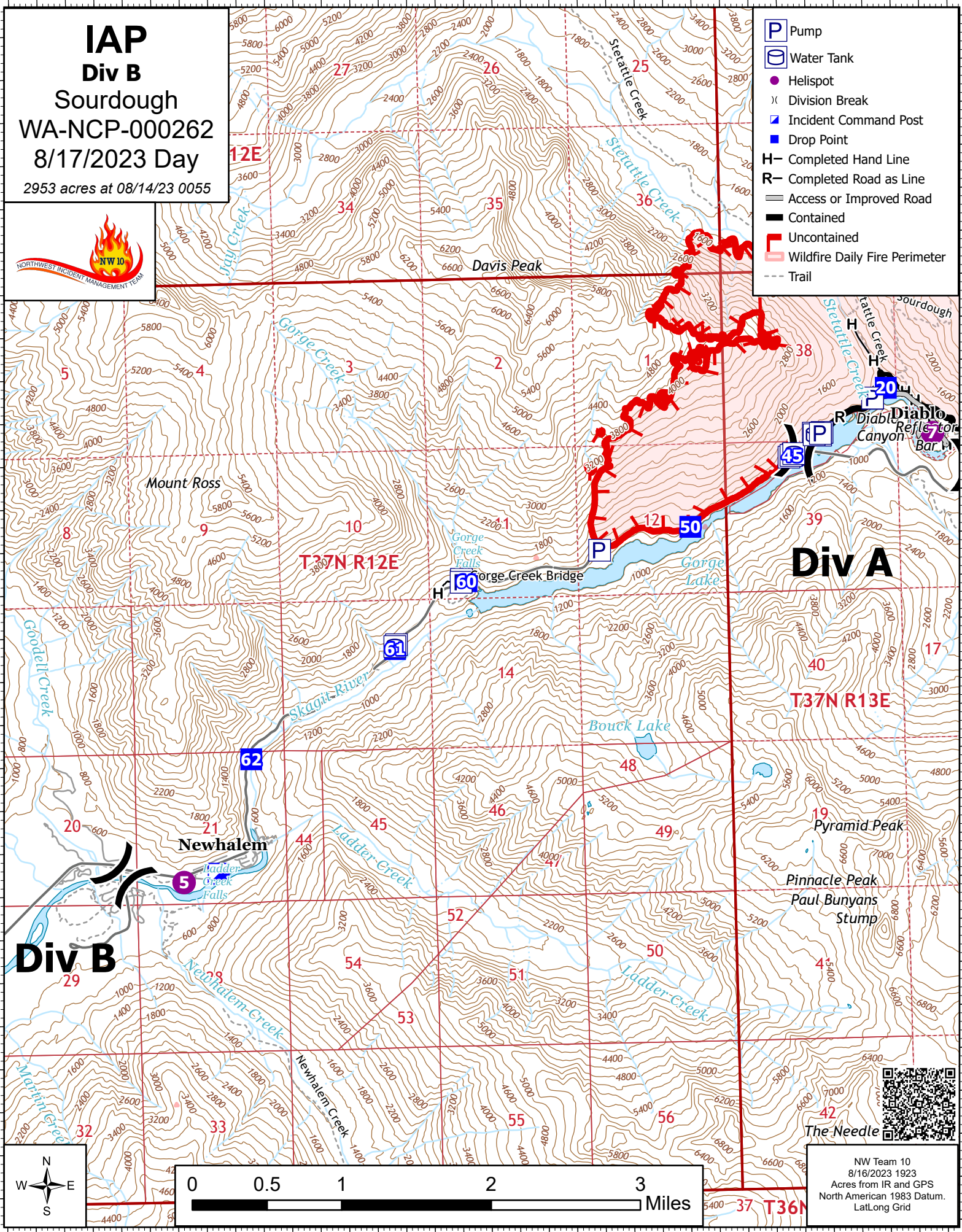
48°44'N

48°42'N

48°42'N

48°40'N

48°40'N



NW Team 10  
 8/16/2023 1923  
 Acres from IR and GPS  
 North American 1983 Datum.  
 Lat/Long Grid



121°16'W

121°14'W

121°12'W

121°10'W