

# Operations

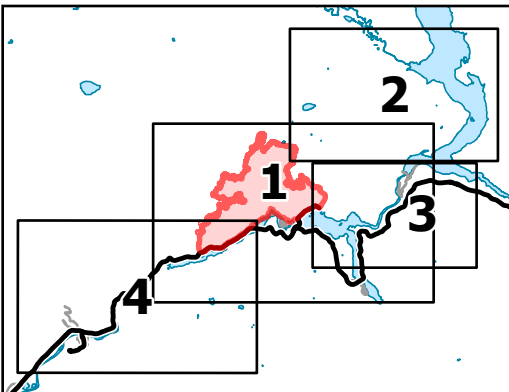
Sourdough

WA-NCP-000262

8/17/2023 Day

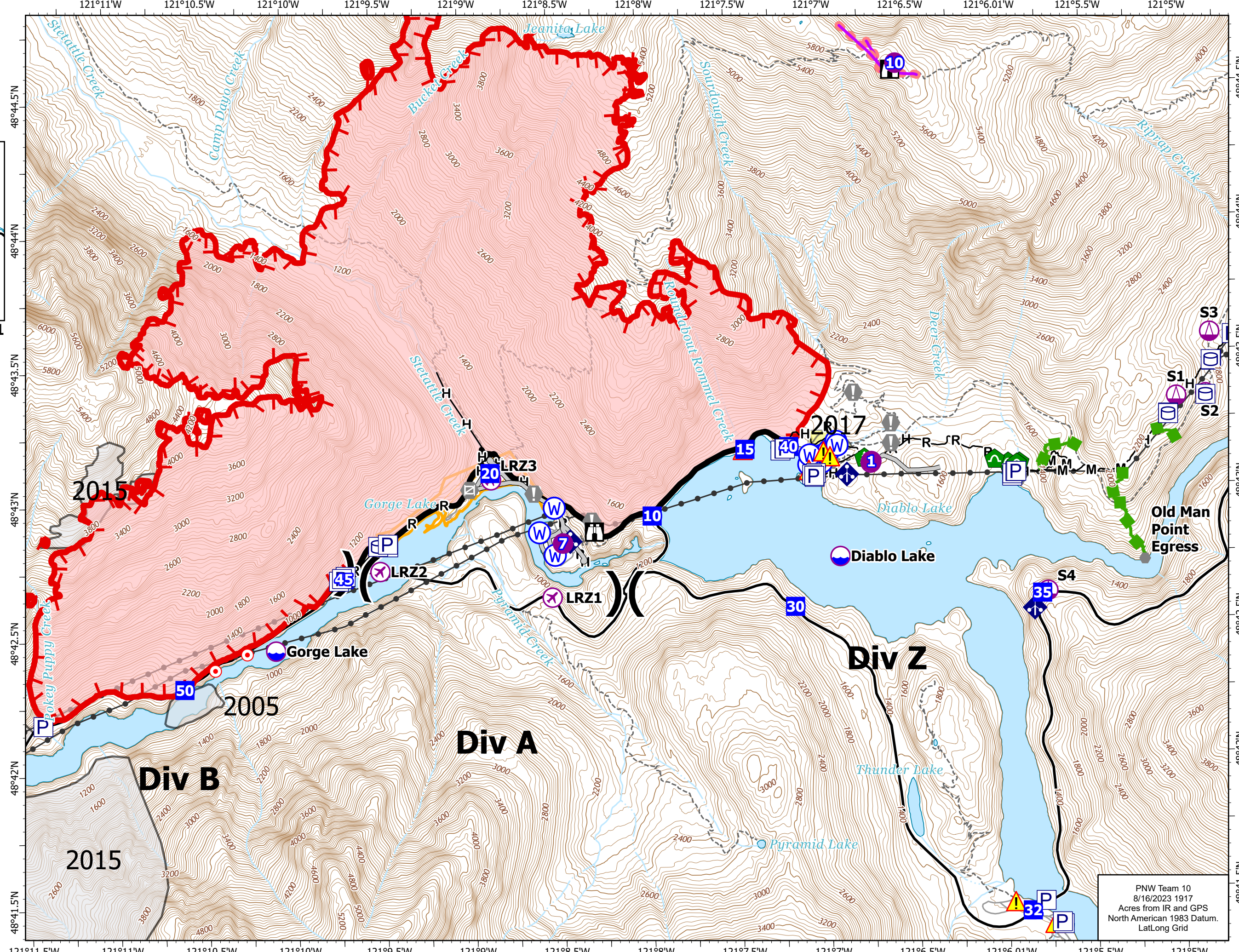
2953 acres at 08/14/23 0055

0 0.25 0.5 Miles



Page Number: 1

- ⊕ Aerial Hazard
- ⊗ UAS Launch and Recovery
- ⊙ Dip Site
- ⊕ Helispot
- ⊕ Sling Site
- ⌘ Division Break
- ⬇ Drop Point
- 🏠 Lookout
- 🔥 Hot Spot - Spot Fire
- ⚠ Value at Risk
- Other
- ⊙ Landmark
- ⊙ Gate
- ⊙ Bridge
- 🌳 Hazard Tree
- 🌳 Culvert
- 📡 Mobile Weather Unit
- ⚠ Hazard
- 🌊 Water Source
- 🔴 Wildfire Daily Fire Perimeter
- H Completed Hand Line
- M Completed Mixed Construction Line
- R Completed Road as Line
- Access or Improved Road
- Other
- 🟢 Escape Route
- 🟡 Retardant Drop
- ⬛ Contained
- 🔴 Uncontained
- 🏠 Historic Structure
- ⚡ Transmission Lines
- 🟡 Fuels Treatments
- 🏠 Fire History
- 🟡 Seattle City Light Property
- ⋯ Trail



PNW Team 10  
8/16/2023 1917  
Acres from IR and GPS  
North American 1983 Datum.  
Lat/Long Grid