

Operations

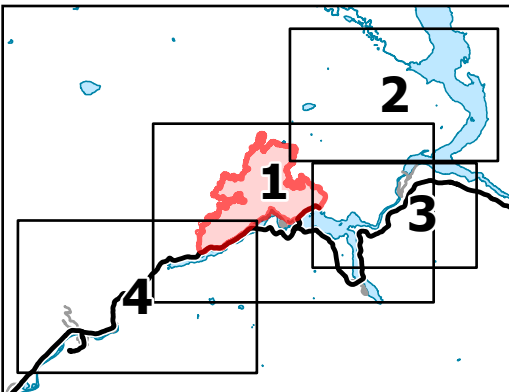
Sourdough

WA-NCP-000262

8/17/2023 Day

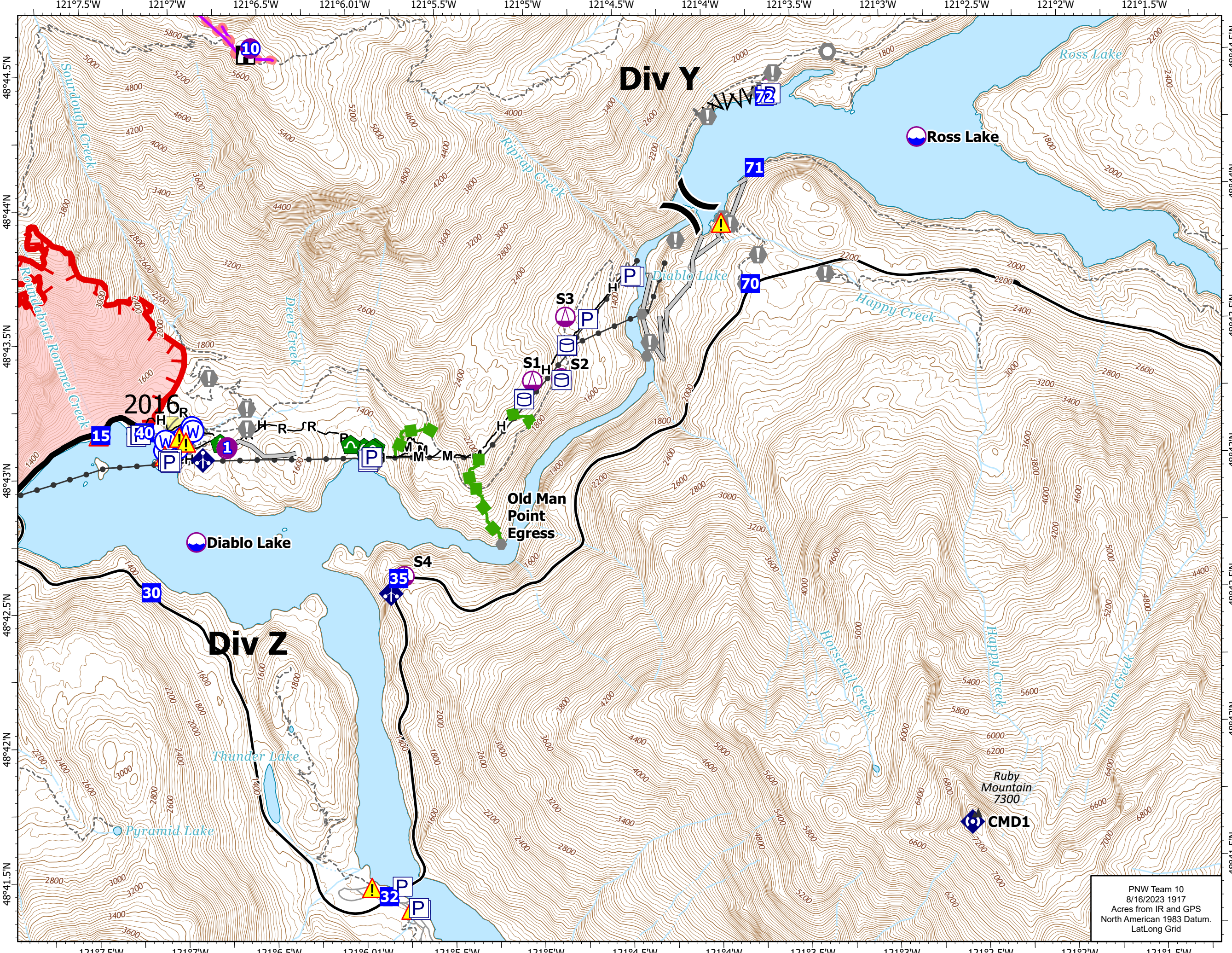
2953 acres at 08/14/23 0055

0 0.25 0.5 Miles



Page Number: 3

- Aerial Hazard
- Dip Site
- Helispot
- Sling Site
- Division Break
- Drop Point
- Lookout
- Value at Risk
- Other
- Landmark
- Gate
- Bridge
- Hazard Tree
- Culvert
- Mobile Weather Unit
- Repeater
- Hazard
- Water Source
- Wildfire Daily Fire Perimeter
- Completed Fuel Break
- Completed Hand Line
- Completed Mixed Construction Line
- Completed Road as Line
- Planned Hand Line
- Access or Improved Road
- Other
- Escape Route
- Retardant Drop
- Contained
- Uncontained
- Historic Structure
- Transmission Lines
- Fuels Treatments
- Fire History
- Trail
- Mountain Peaks (ft)



PNW Team 10
8/16/2023 1917
Acres from IR and GPS
North American 1983 Datum.
LatLong Grid