

Operations

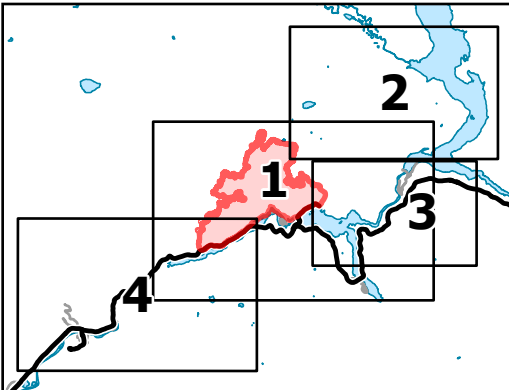
Sourdough

WA-NCP-000262

8/17/2023 Day

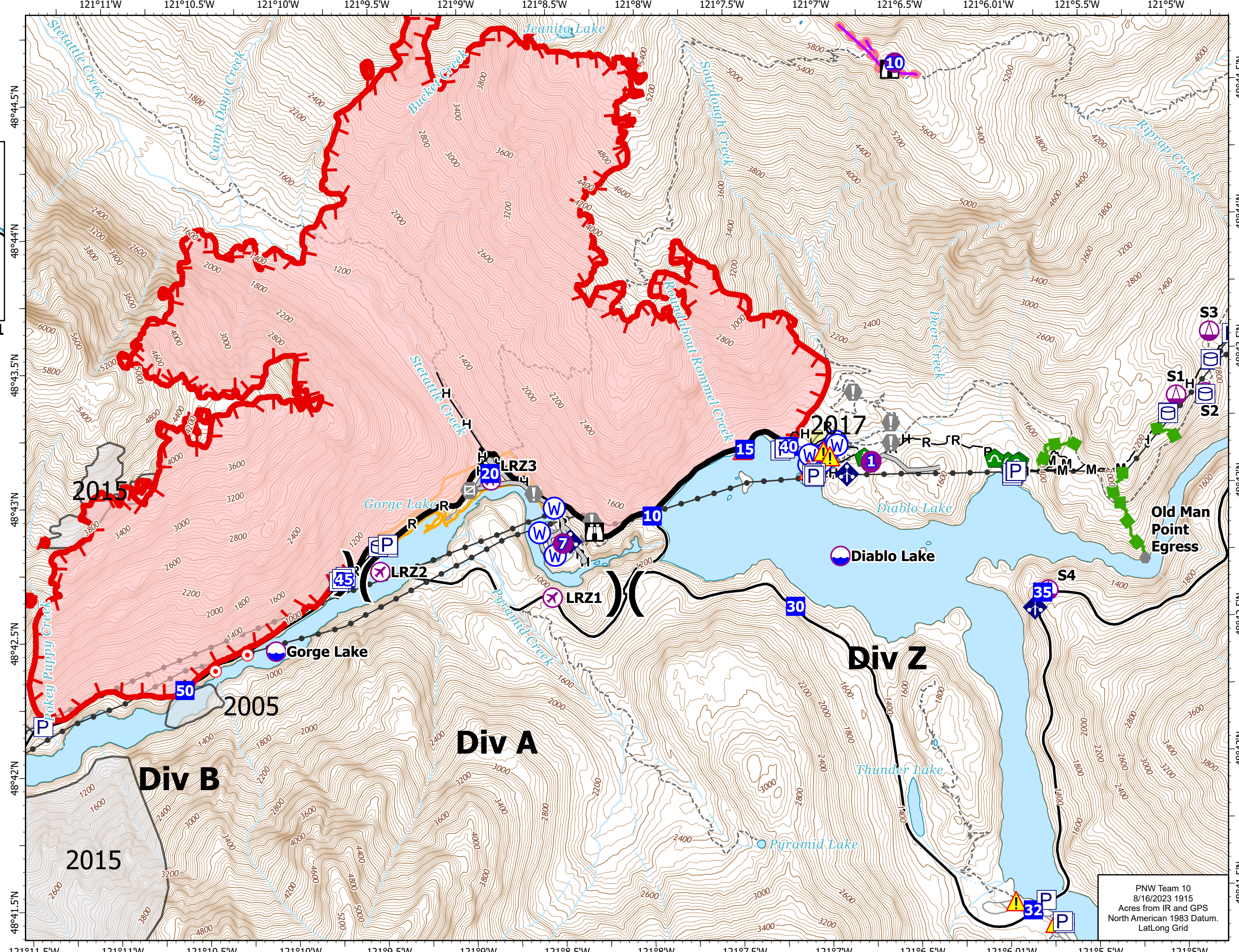
2953 acres at 08/14/23 0055

0 0.25 0.5 Miles



Page Number: 1

- Aerial Hazard
- UAS Launch and Recovery
- Dip Site
- Helispot
- Sling Site
- Division Break
- Drop Point
- Lookout
- Hot Spot - Spot Fire
- Value at Risk
- Other
- Landmark
- Gate
- Bridge
- Hazard Tree
- Culvert
- Mobile Weather Unit
- Hazard
- Water Source
- Wildfire Daily Fire Perimeter
- Completed Hand Line
- Completed Mixed Construction Line
- Completed Road as Line
- Access or Improved Road
- Other
- Escape Route
- Retardant Drop
- Contained
- Uncontained
- Historic Structure
- Transmission Lines
- Fuels Treatments
- Fire History
- Seattle City Light Property
- Trail



PNW Team 10
8/16/2023 1915
Acres from IR and GPS
North American 1983 Datum.
Lat/Long Grid

Operations

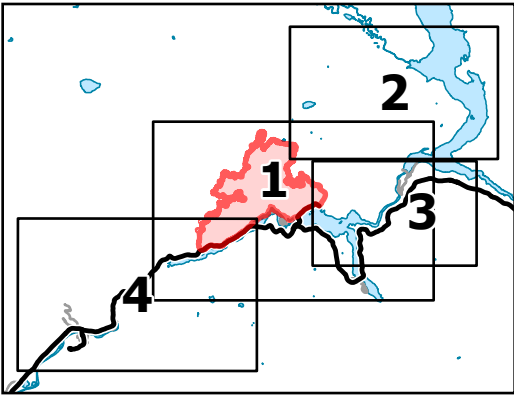
Sourdough

WA-NCP-000262

8/17/2023 Day

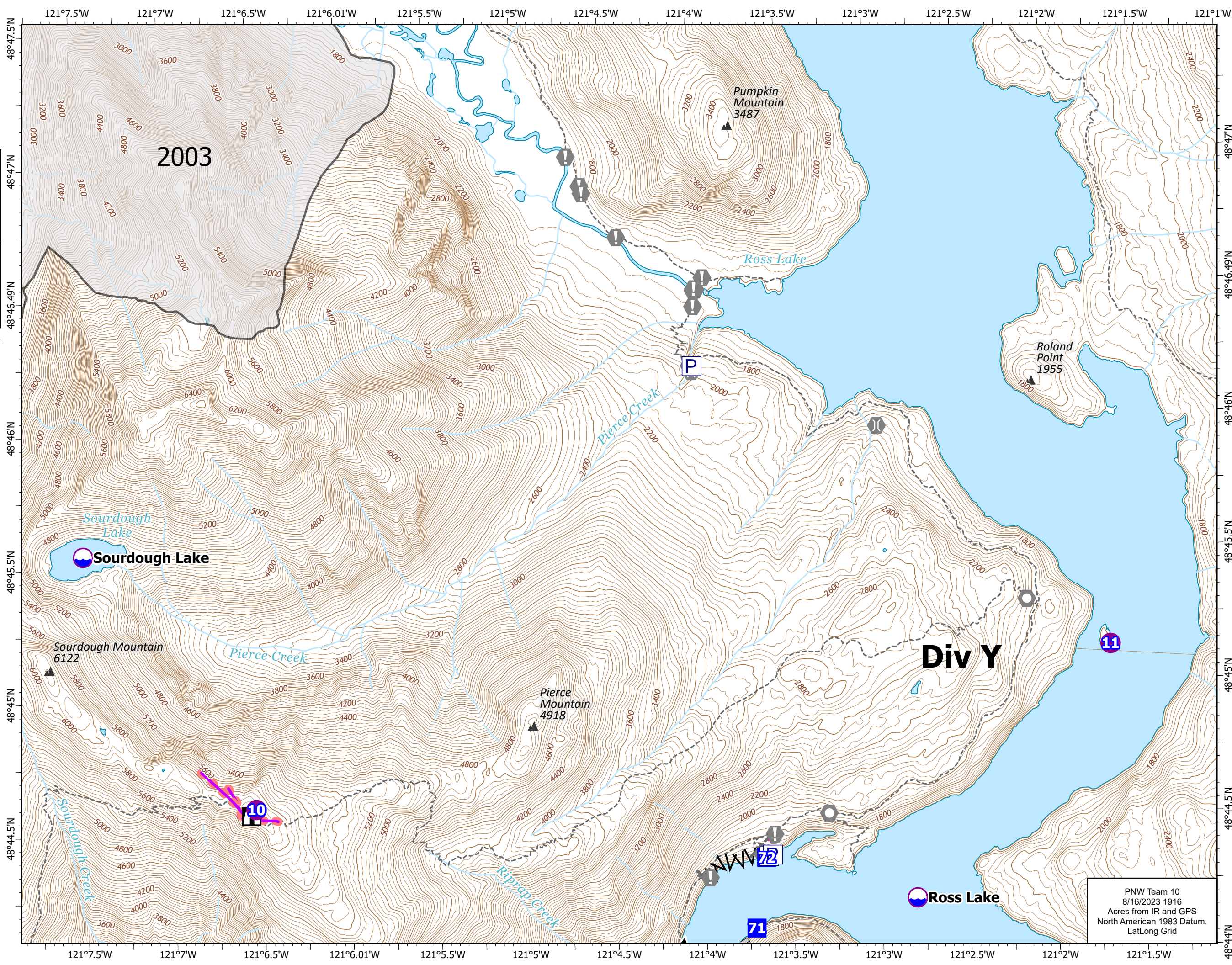
2953 acres at 08/14/23 0055

0 0.25 0.5 Miles



Page Number: 2

- Dip Site
- Helispot
- Division Break
- Drop Point
- Lookout
- Value at Risk
- Landmark
- Bridge
- Completed Fuel Break
- Planned Hand Line
- Access or Improved Road
- Other
- Retardant Drop
- Historic Structure
- Fire History
- Trail
- Mountain Peaks (ft)



PNW Team 10
8/16/2023 1916
Acres from IR and GPS
North American 1983 Datum.
Lat/Long Grid

Operations

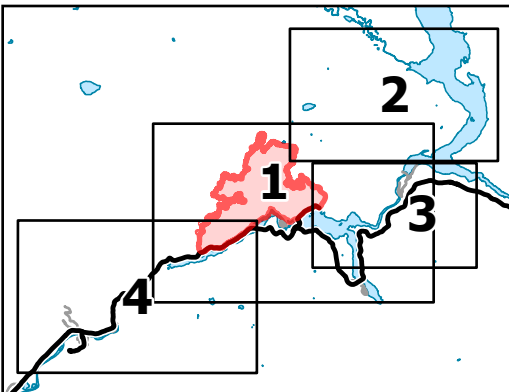
Sourdough

WA-NCP-000262

8/17/2023 Day

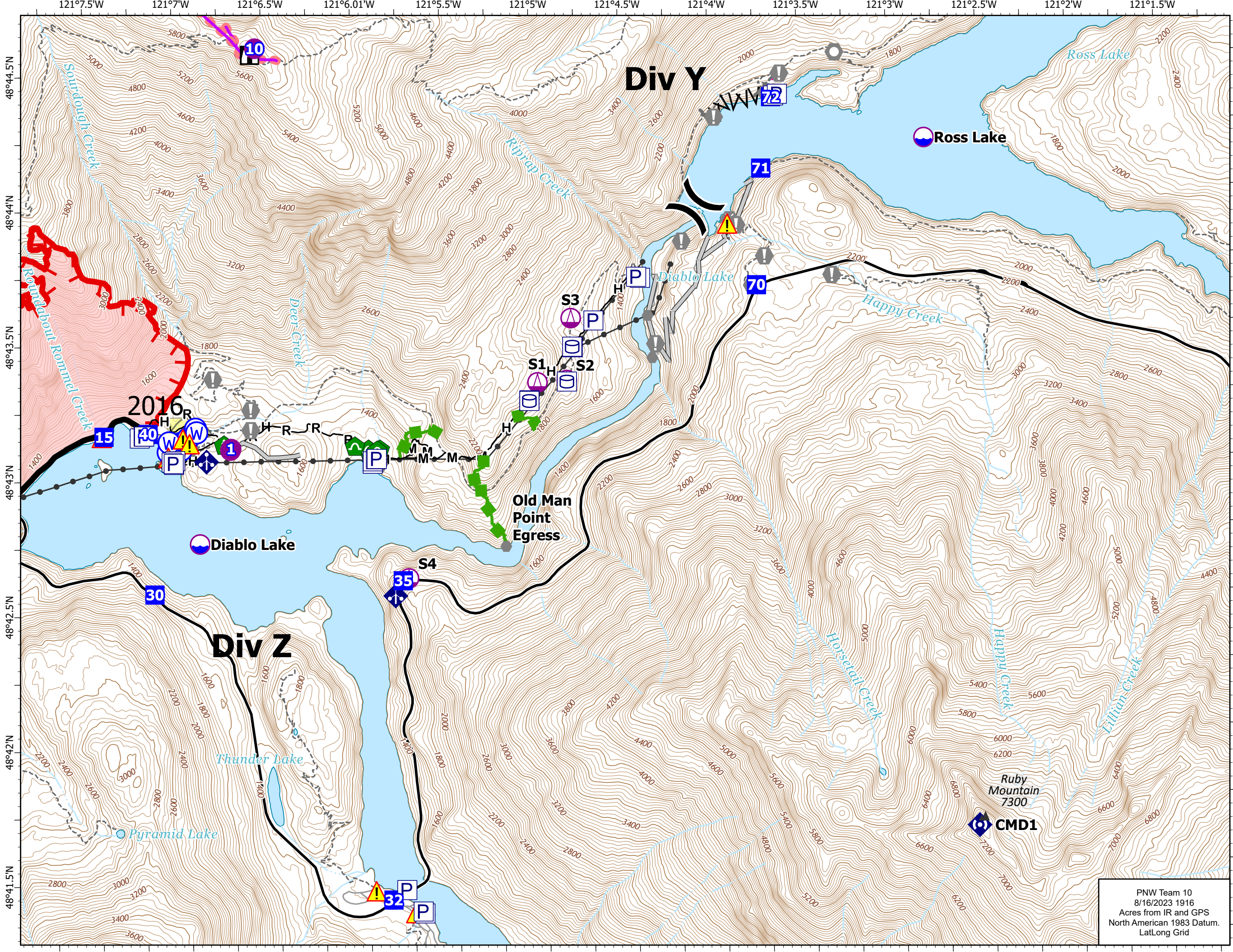
2953 acres at 08/14/23 0055

0 0.25 0.5 Miles



Page Number: 3

- Aerial Hazard
- Dip Site
- Helispot
- Sling Site
- Division Break
- Drop Point
- Lookout
- Value at Risk
- Other
- Landmark
- Gate
- Bridge
- Hazard Tree
- Culvert
- Mobile Weather Unit
- Repeater
- Hazard
- Water Source
- Wildfire Daily Fire Perimeter
- Completed Fuel Break
- Completed Hand Line
- Completed Mixed Construction Line
- Completed Road as Line
- Planned Hand Line
- Access or Improved Road
- Other
- Escape Route
- Retardant Drop
- Contained
- Uncontained
- Historic Structure
- Transmission Lines
- Fuels Treatments
- Fire History
- Trail
- Mountain Peaks (ft)



PNW Team 10
8/16/2023 1916
Acres from IR and GPS
North American 1983 Datum.
LatLong Grid

Operations

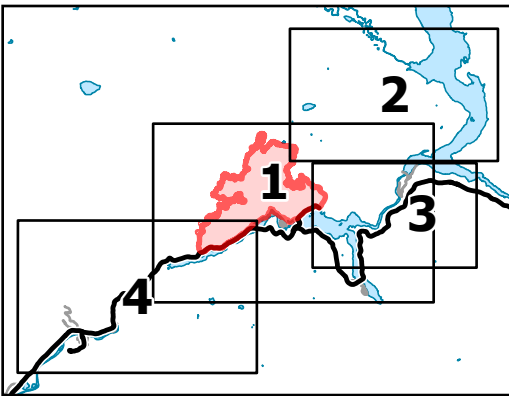
Sourdough

WA-NCP-000262

8/17/2023 Day

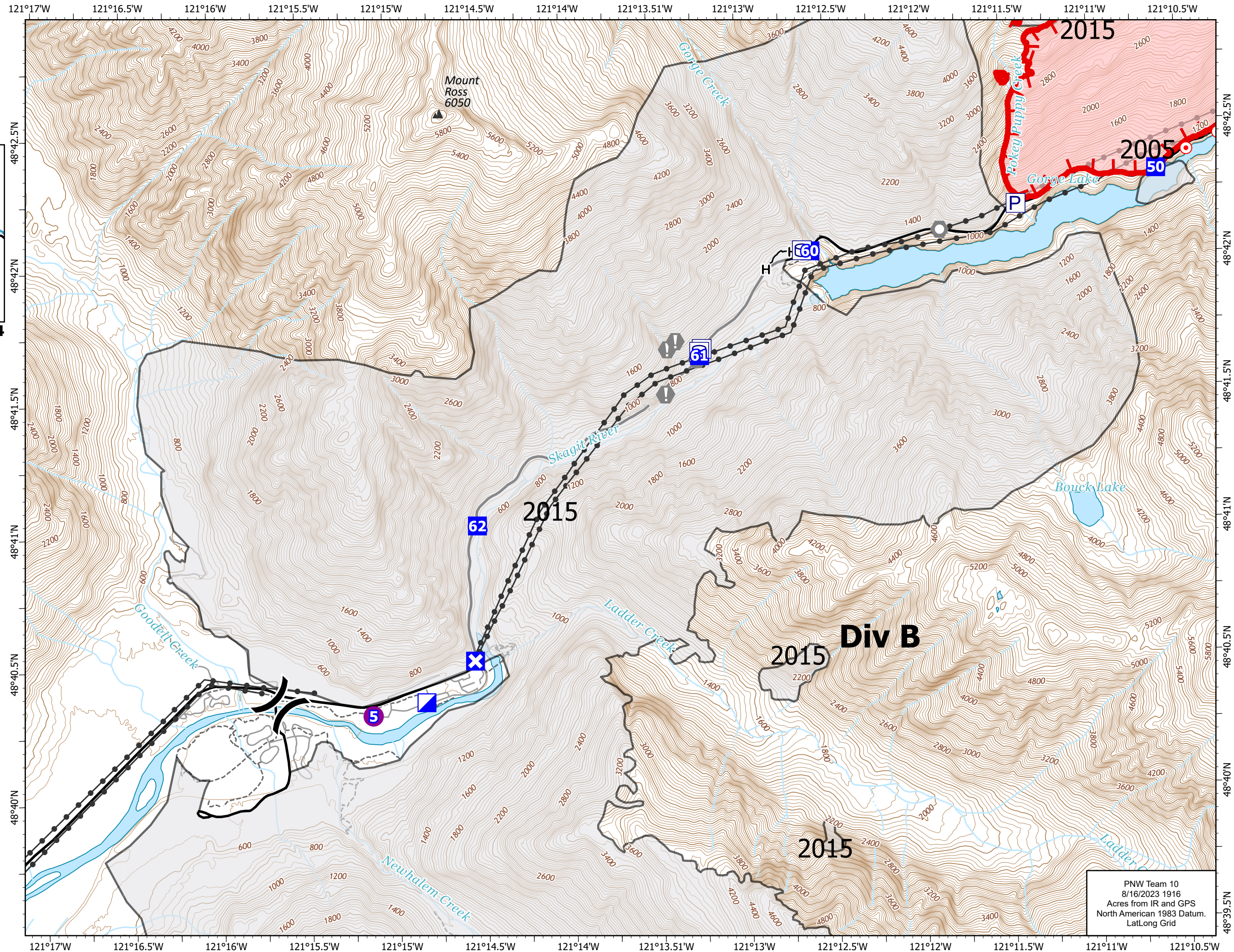
2953 acres at 08/14/23 0055

0 0.25 0.5 Miles



Page Number: 4

- Helispot
-) (Division Break
- ▣ Incident Command Post
- Drop Point
- ⊠ Closure
- Hot Spot - Spot Fire
- Landmark
- ▭ Wildfire Daily Fire Perimeter
- H— Completed Hand Line
- ▬ Uncontained
- ⚠ Historic Structure
- Transmission Lines
- ▭ Fire History
- - - Trail
- Label_Lines
- ▲ Mountain Peaks (ft)



PNW Team 10
8/16/2023 1916
Acres from IR and GPS
North American 1983 Datum.
Lat/Long Grid