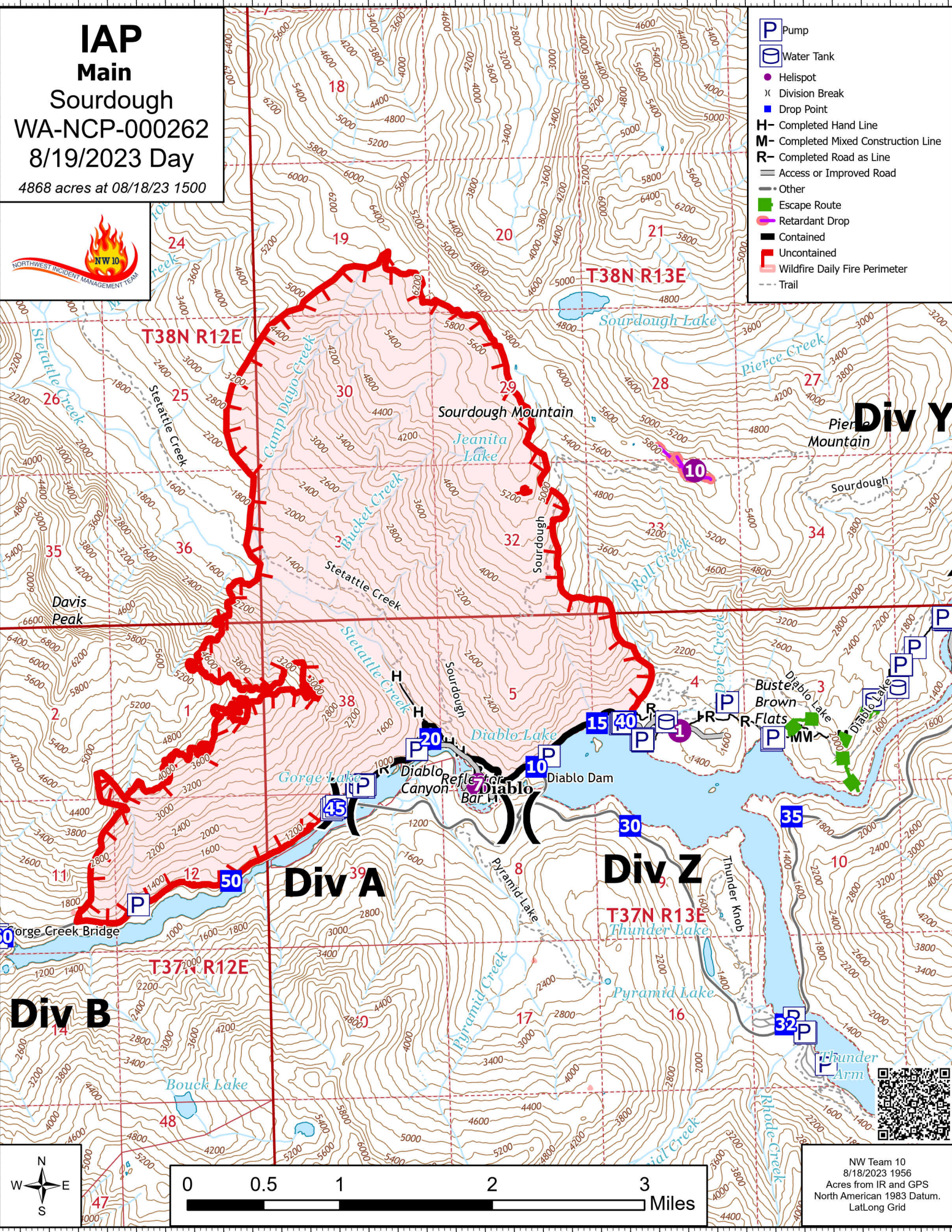


121°12'W 121°10'W 121°8'W 121°6.01'W

IAP
Main
Sourdough
WA-NCP-000262
8/19/2023 Day
4868 acres at 08/18/23 1500



- Pump
- Water Tank
- Helispot
- Division Break
- Drop Point
- Completed Hand Line
- Completed Mixed Construction Line
- Completed Road as Line
- Access or Improved Road
- Other
- Escape Route
- Retardant Drop
- Contained
- Uncontained
- Wildfire Daily Fire Perimeter
- Trail



NW Team 10
8/18/2023 1956
Acres from IR and GPS
North American 1983 Datum.
Lat/Long Grid



121°12'W 121°10'W 121°8'W 121°6.01'W

48°46'N
48°44'N
48°42'N

48°46'N
48°44'N
48°42'N