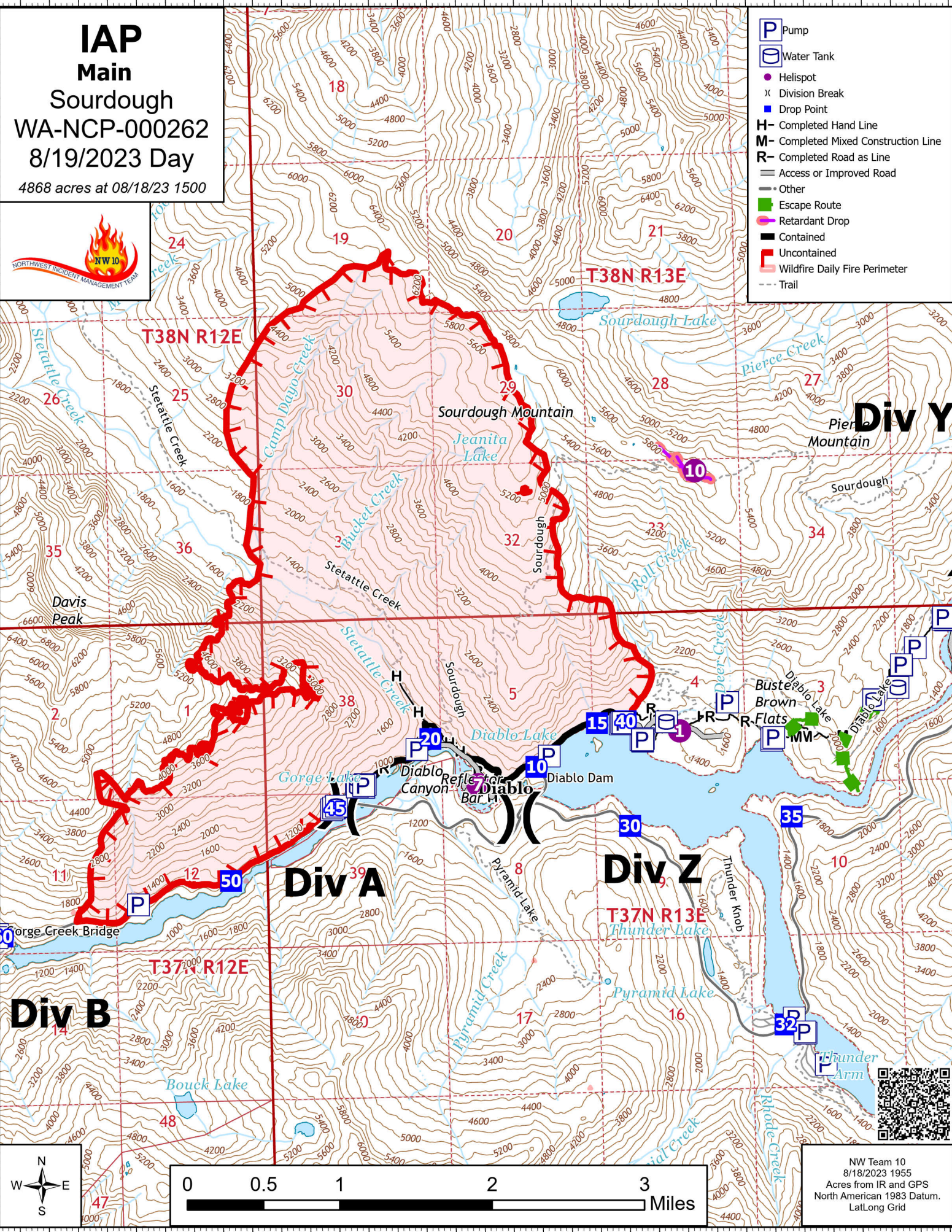


121°12'W 121°10'W 121°8'W 121°6.01'W

IAP
Main
Sourdough
WA-NCP-000262
8/19/2023 Day
4868 acres at 08/18/23 1500



- Pump
- Water Tank
- Helispot
- Division Break
- Drop Point
- Completed Hand Line
- Completed Mixed Construction Line
- Completed Road as Line
- Access or Improved Road
- Other
- Escape Route
- Retardant Drop
- Contained
- Uncontained
- Wildfire Daily Fire Perimeter
- Trail



NW Team 10
8/18/2023 1955
Acres from IR and GPS
North American 1983 Datum.
Lat/Long Grid



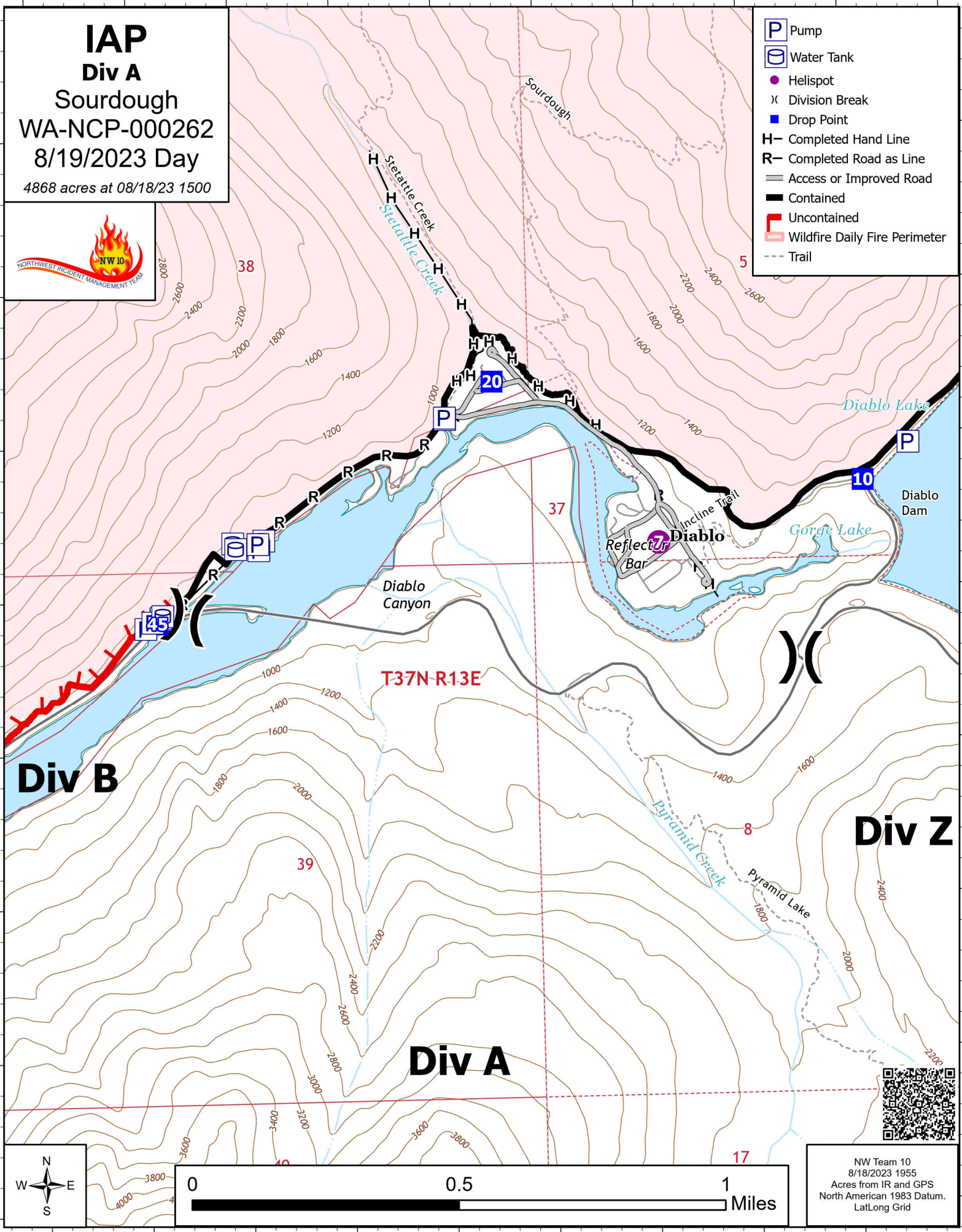
121°10'W

121°8'W

IAP
Div A
 Sourdough
 WA-NCP-000262
 8/19/2023 Day
 4868 acres at 08/18/23 1500



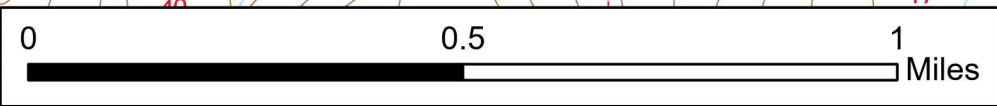
- Pump
- Water Tank
- Helispot
- Division Break
- Drop Point
- Completed Hand Line
- Completed Road as Line
- Access or Improved Road
- Contained
- Uncontained
- Wildfire Daily Fire Perimeter
- Trail



Div B

Div Z

Div A



NW Team 10
 8/18/2023 1955
 Acres from IR and GPS
 North American 1983 Datum.
 LatLong Grid



48°42'N

48°42'N

121°10'W

121°8'W

121°8'W

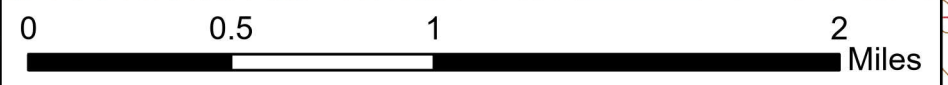
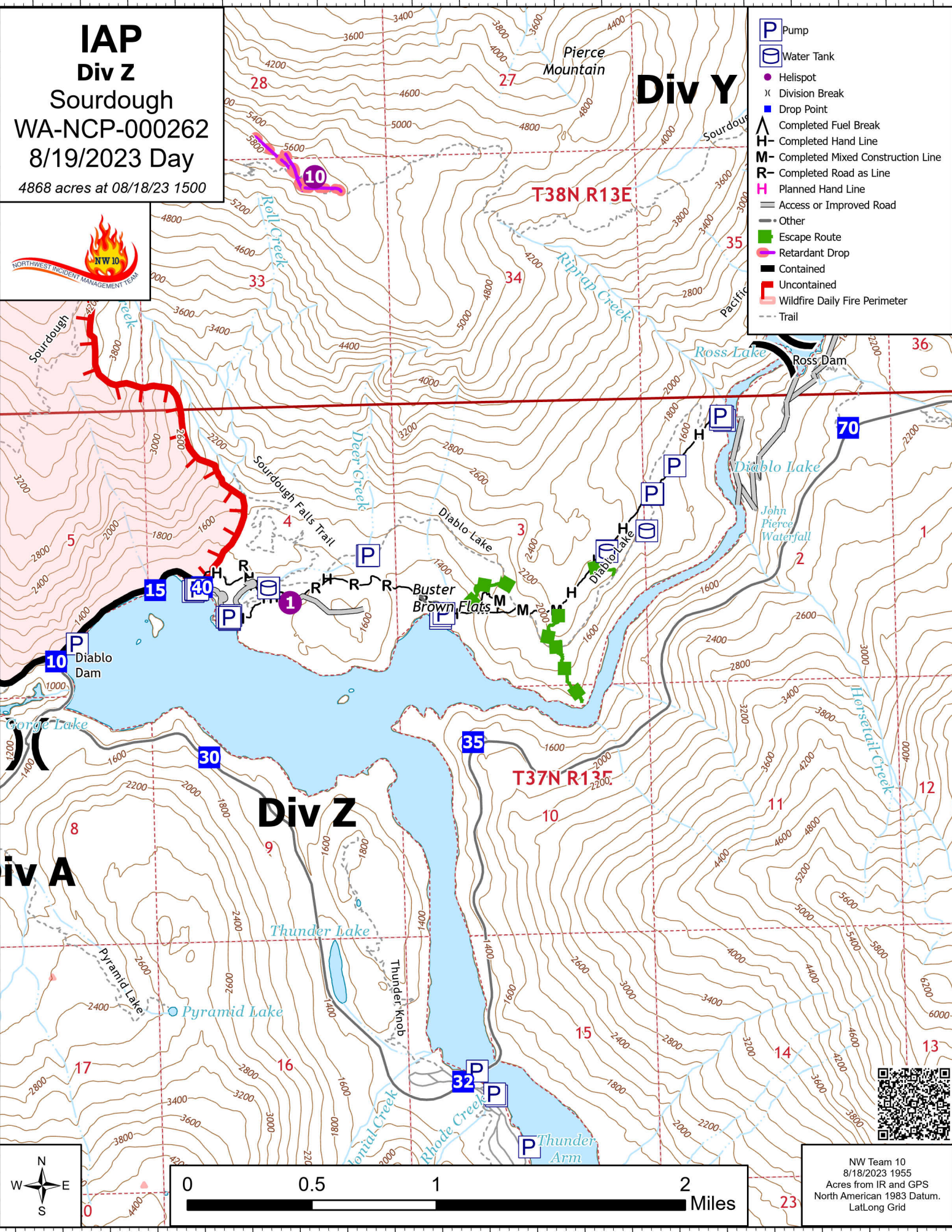
121°6.01'W

121°4'W

IAP
Div Z
 Sourdough
 WA-NCP-000262
 8/19/2023 Day
 4868 acres at 08/18/23 1500



- P Pump
- O Water Tank
- Helispot
- ⊗ Division Break
- Drop Point
- ▲ Completed Fuel Break
- Completed Hand Line
- Completed Mixed Construction Line
- Completed Road as Line
- Planned Hand Line
- Access or Improved Road
- Other
- █ Escape Route
- █ Retardant Drop
- █ Contained
- █ Uncontained
- █ Wildfire Daily Fire Perimeter
- Trail



NW Team 10
 8/18/2023 1955
 Acres from IR and GPS
 North American 1983 Datum.
 Lat/Long Grid

121°8'W

121°6.01'W

121°4'W

48°44'N

48°44'N

48°42'N

48°42'N



121°6.01'W

121°4'W

121°2'W

48°48'N

48°48'N

IAP
Div Y
 Sourdough
 WA-NCP-000262
 8/19/2023 Day
 4868 acres at 08/18/23 1500



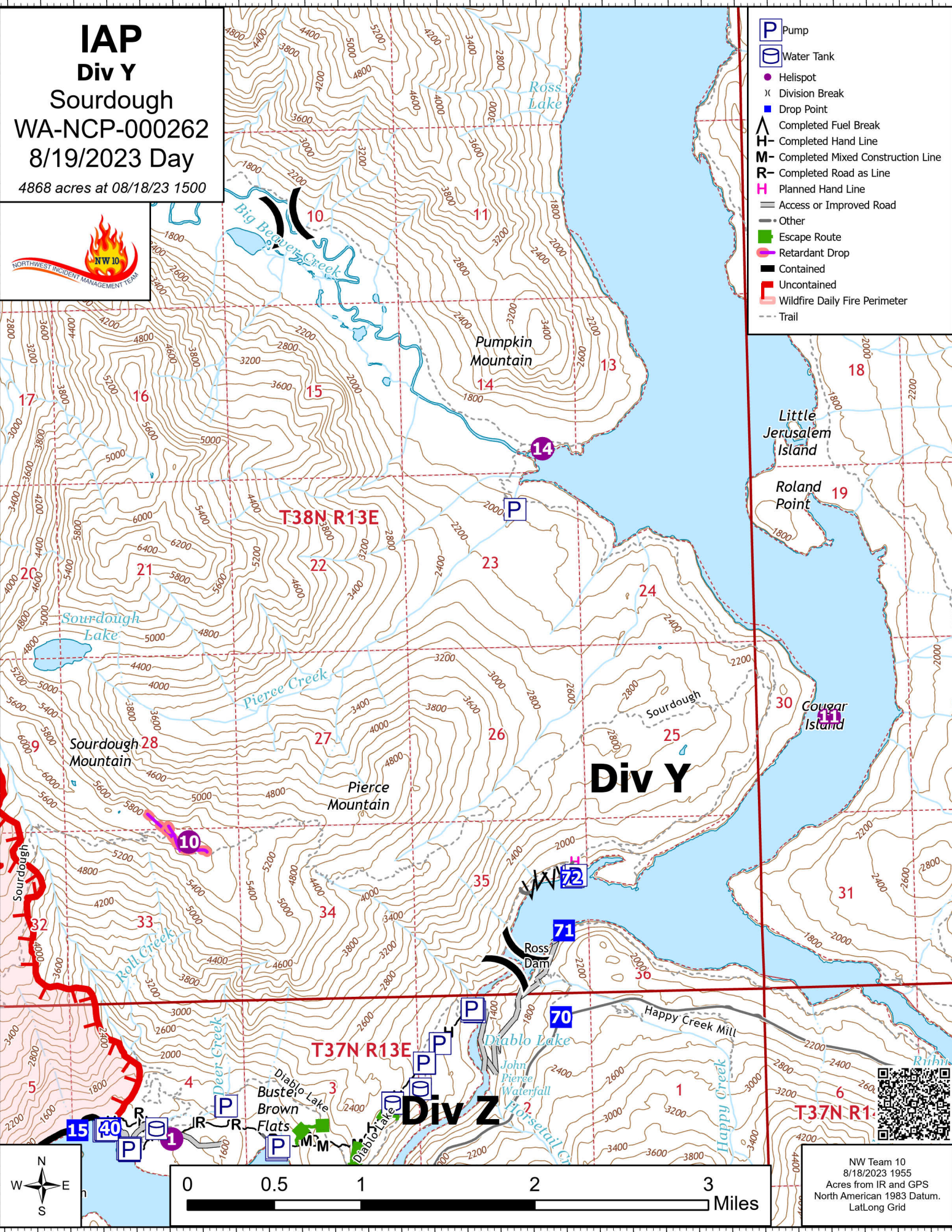
- P Pump
- W Water Tank
- Helispot
- X Division Break
- Drop Point
- ^ Completed Fuel Break
- Completed Hand Line
- Completed Mixed Construction Line
- Completed Road as Line
- Planned Hand Line
- Access or Improved Road
- Other
- Escape Route
- Retardant Drop
- Contained
- Uncontained
- Wildfire Daily Fire Perimeter
- - - Trail

48°46'N

48°46'N

48°44'N

48°44'N



NW Team 10
 8/18/2023 1955
 Acres from IR and GPS
 North American 1983 Datum.
 Lat/Long Grid

121°8'W

121°6.01'W

121°4'W

121°2'W

121°16'W

121°14'W

121°12'W

121°10'W

IAP
Div B
 Sourdough
 WA-NCP-000262
 8/19/2023 Day
 4868 acres at 08/18/23 1500



- Pump
- Water Tank
- Helispot
- Division Break
- Incident Command Post
- Drop Point
- Completed Hand Line
- Completed Road as Line
- Access or Improved Road
- Contained
- Uncontained
- Wildfire Daily Fire Perimeter
- Trail

48°44'N

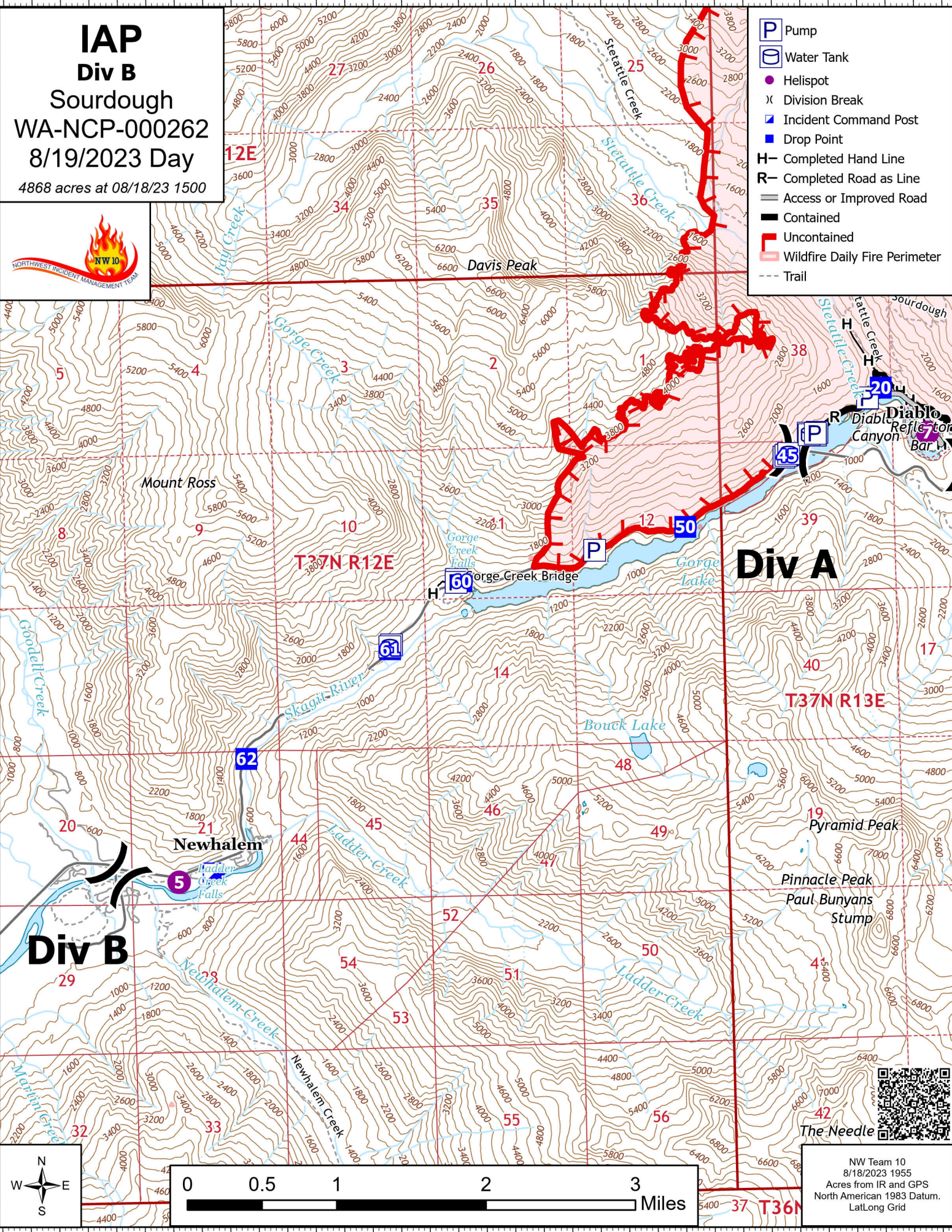
48°44'N

48°42'N

48°42'N

48°40'N

48°40'N



NW Team 10
 8/18/2023 1955
 Acres from IR and GPS
 North American 1983 Datum.
 Lat/Long Grid

121°16'W

121°14'W

121°12'W

121°10'W