

# Operations

Sourdough

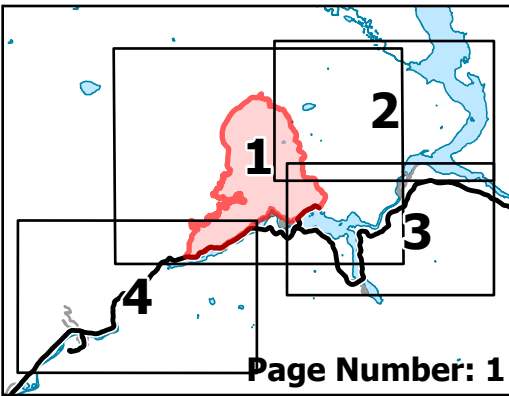
WA-NCP-000262

8/19/2023 Day

4868 acres at 08/18/23 1500

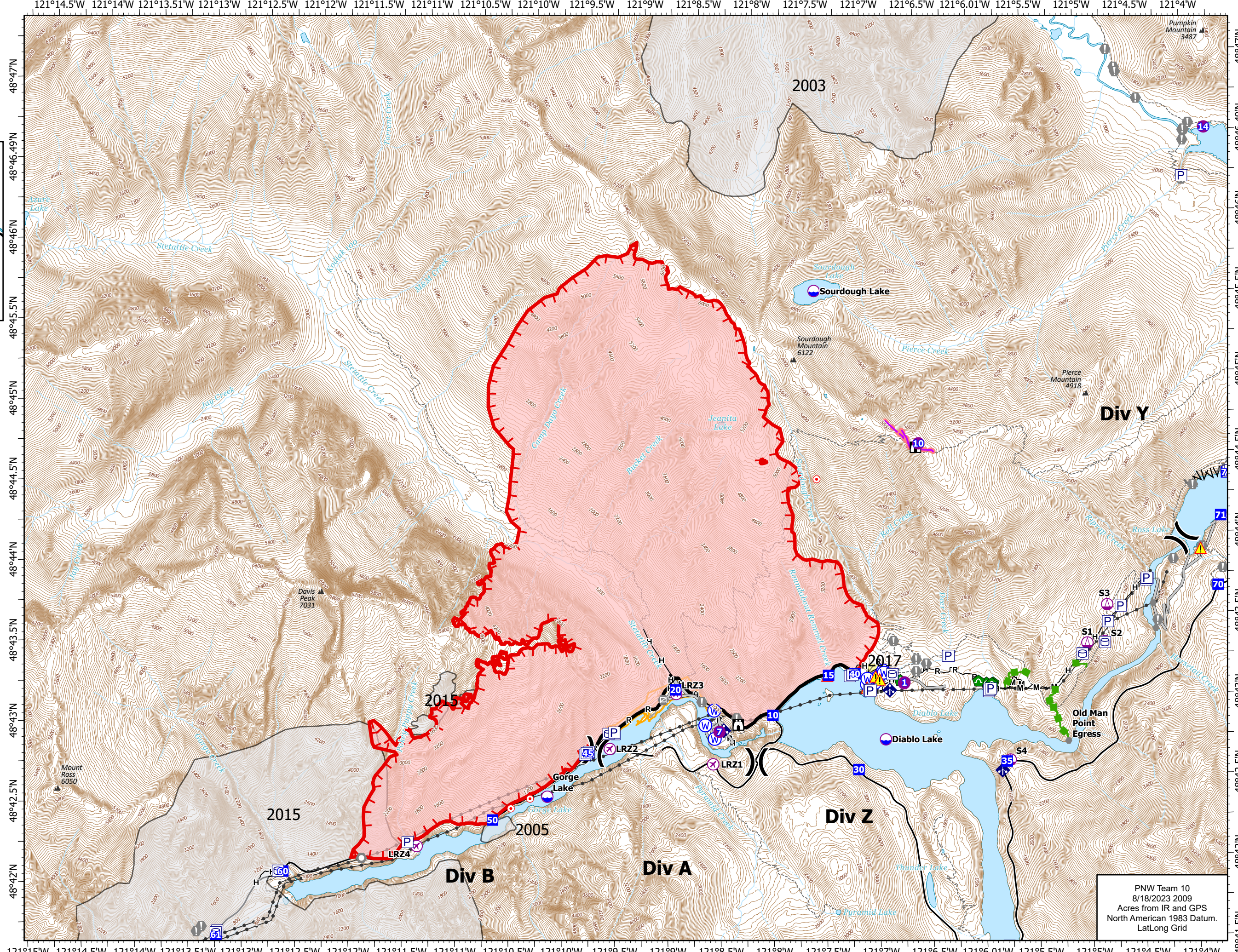
0 0.25 0.5

Miles



Page Number: 1

- ⊕ Aerial Hazard
- ⊗ UAS Launch and Recovery
- ⊙ Dip Site
- ⊕ Helispot
- ⊕ Sling Site
- ⊗ Division Break
- ⊕ Drop Point
- ⊕ Lookout
- ⊙ Hot Spot - Spot Fire
- ⊙ Value at Risk
- ⊙ Other
- ⊙ Landmark
- ⊙ Gate
- ⊕ Bridge
- ⊕ Hazard Tree
- ⊕ Culvert
- ⊕ Mobile Weather Unit
- ⊕ Hazard
- ⊕ Water Source
- ⊕ Wildfire Daily Fire Perimeter
- ⊕ Completed Fuel Break
- ⊕ Completed Hand Line
- ⊕ Completed Mixed Construction Line
- ⊕ Completed Road as Line
- ⊕ Planned Hand Line
- ⊕ Access or Improved Road
- ⊕ Other
- ⊕ Escape Route
- ⊕ Retardant Drop
- ⊕ Contained
- ⊕ Uncontained
- ⊕ Historic Structure
- ⊕ Transmission Lines
- ⊕ Fuels Treatments
- ⊕ Fire History
- ⊕ Seattle City Light Property
- ⊕ Trail
- ⊕ Mountain Peaks (ft)



PNW Team 10  
8/18/2023 2009  
Acres from IR and GPS  
North American 1983 Datum.  
LatLong Grid