

# Operations

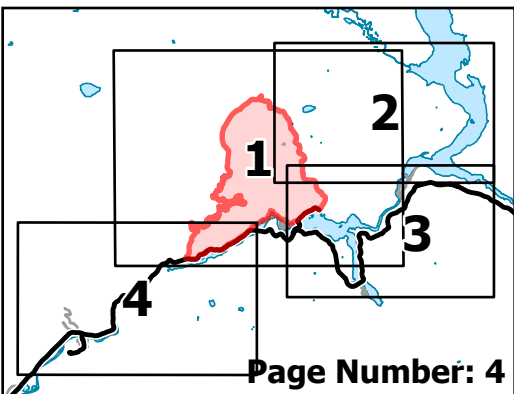
Sourdough

WA-NCP-000262

8/19/2023 Day

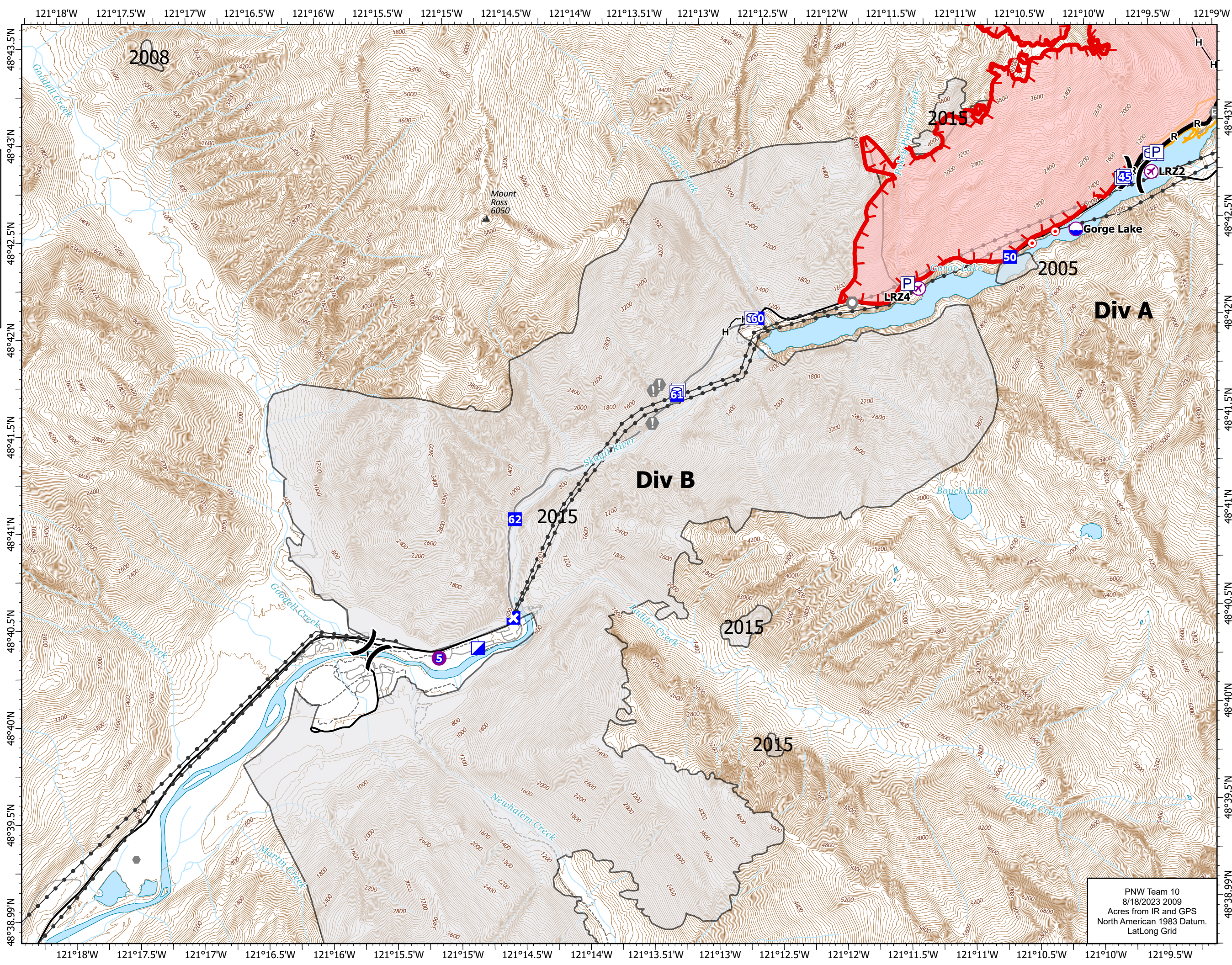
4868 acres at 08/18/23 1500

0 0.25 0.5 Miles



Page Number: 4

- ⊗ UAS Launch and Recovery
- ⊙ Dip Site
- Helispot
- ) ( Division Break
- ▢ Incident Command Post
- Drop Point
- ⊠ Closure
- ⊙ Hot Spot - Spot Fire
- Other
- Landmark
- ⊙ Gate
- ▭ Wildfire Daily Fire Perimeter
- H— Completed Hand Line
- R— Completed Road as Line
- ▬ Contained
- ┌─ Uncontained
- ⚠ Historic Structure
- Transmission Lines
- ▭ Fire History
- ▭ Seattle City Light Property
- - - Trail
- Label\_Lines
- ▲ Mountain Peaks (ft)



PNW Team 10  
8/18/2023 2009  
Acres from IR and GPS  
North American 1983 Datum.  
Lat/Long Grid