

Operations

Sourdough

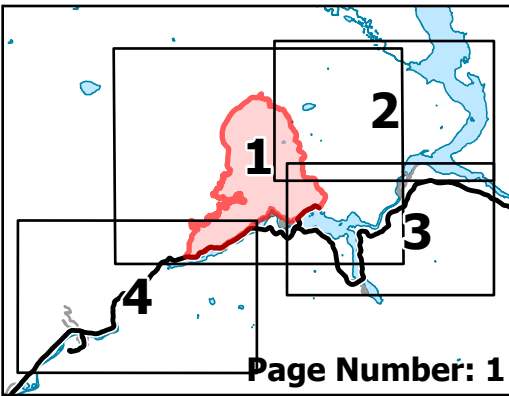
WA-NCP-000262

8/19/2023 Day

4868 acres at 08/18/23 1500

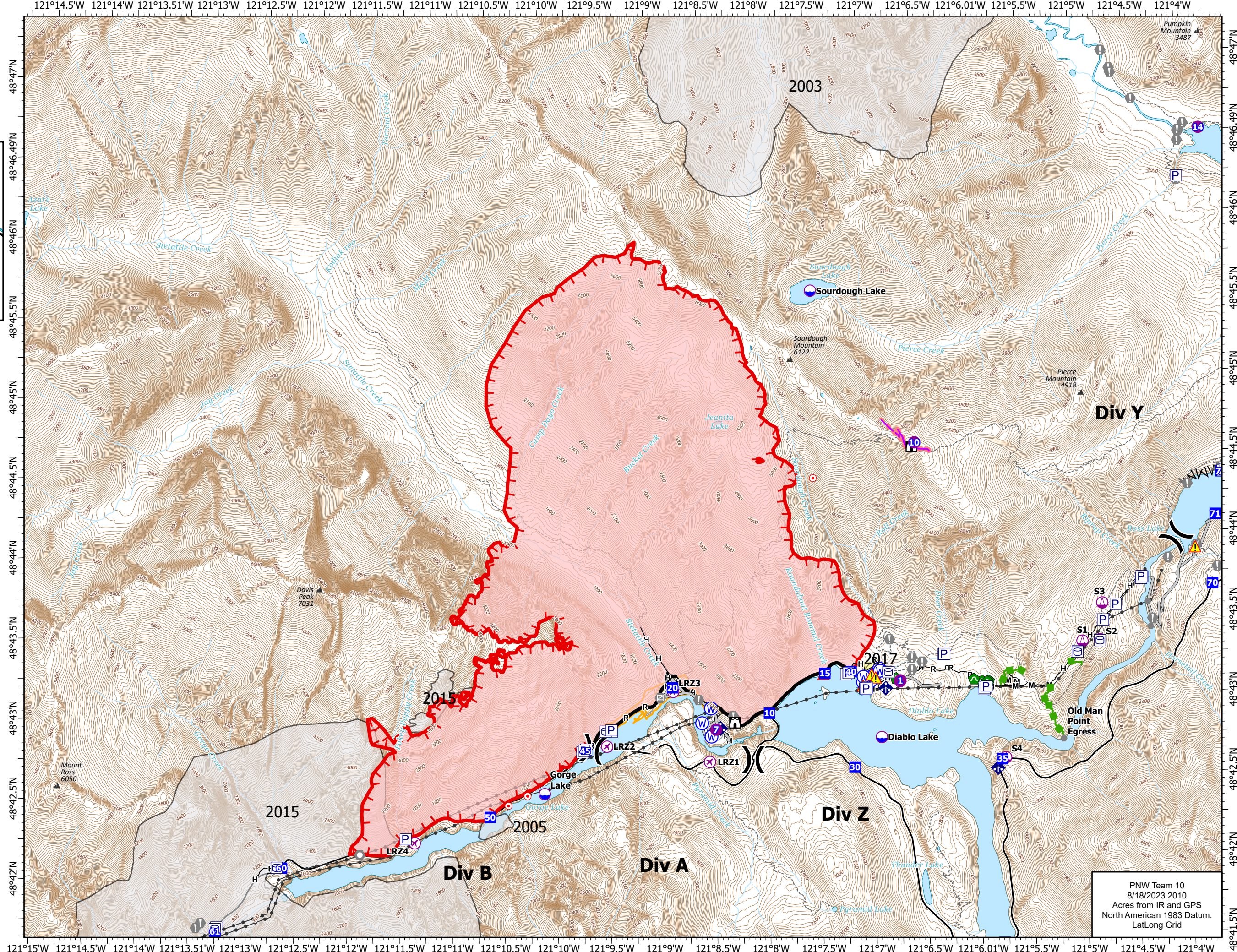
0 0.25 0.5

Miles



Page Number: 1

- ⊕ Aerial Hazard
- ⊗ UAS Launch and Recovery
- ⊙ Dip Site
- ⊕ Helispot
- ⊕ Sling Site
- ⊗ Division Break
- ⊕ Drop Point
- ⊕ Lookout
- ⊙ Hot Spot - Spot Fire
- ⊙ Value at Risk
- ⊙ Other
- ⊙ Landmark
- ⊕ Gate
- ⊕ Bridge
- ⊕ Hazard Tree
- ⊕ Culvert
- ⊕ Mobile Weather Unit
- ⊕ Hazard
- ⊕ Water Source
- ⊕ Wildfire Daily Fire Perimeter
- ⊕ Completed Fuel Break
- ⊕ Completed Hand Line
- ⊕ Completed Mixed Construction Line
- ⊕ Completed Road as Line
- ⊕ Planned Hand Line
- ⊕ Access or Improved Road
- ⊕ Other
- ⊕ Escape Route
- ⊕ Retardant Drop
- ⊕ Contained
- ⊕ Uncontained
- ⊕ Historic Structure
- ⊕ Transmission Lines
- ⊕ Fuels Treatments
- ⊕ Fire History
- ⊕ Seattle City Light Property
- ⊕ Trail
- ⊕ Mountain Peaks (ft)



PNW Team 10
8/18/2023 2010
Acres from IR and GPS
North American 1983 Datum.
LatLong Grid

Operations

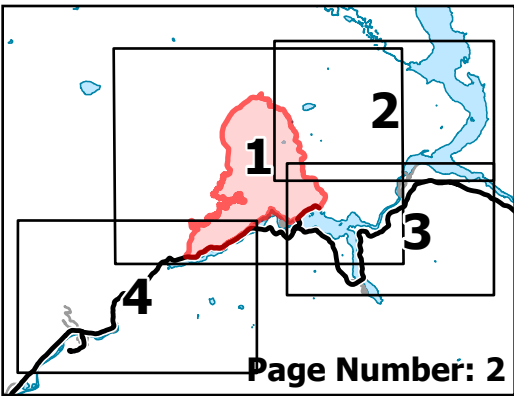
Sourdough

WA-NCP-000262

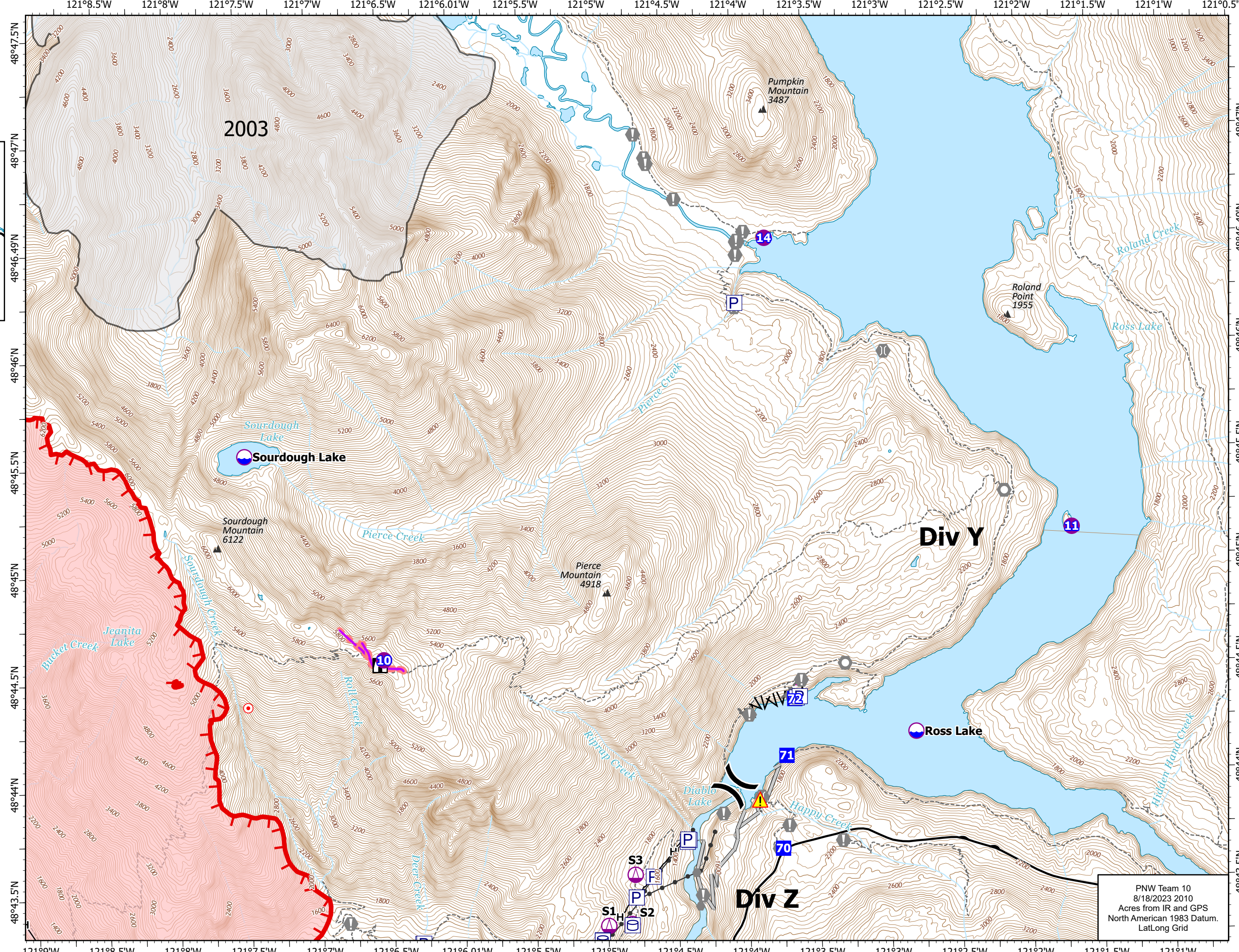
8/19/2023 Day

4868 acres at 08/18/23 1500

0 0.25 0.5 Miles



- Dip Site
- Helispot
- Sling Site
- Division Break
- Drop Point
- Lookout
- Hot Spot - Spot Fire
- Value at Risk
- Other
- Landmark
- Bridge
- Hazard
- Wildfire Daily Fire Perimeter
- Completed Fuel Break
- Completed Hand Line
- Planned Hand Line
- Access or Improved Road
- Other
- Retardant Drop
- Uncontained
- Historic Structure
- Transmission Lines
- Fire History
- Trail
- Mountain Peaks (ft)



PNW Team 10
8/18/2023 2010
Acres from IR and GPS
North American 1983 Datum.
Lat/Long Grid

Operations

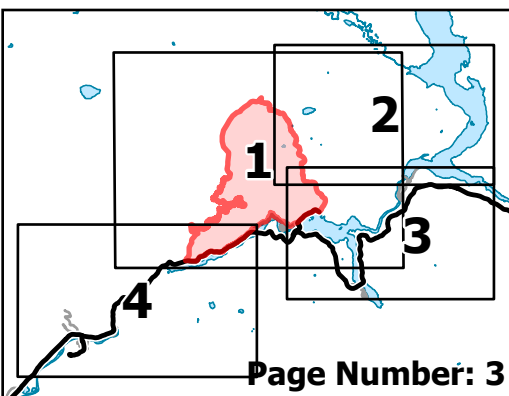
Sourdough

WA-NCP-000262

8/19/2023 Day

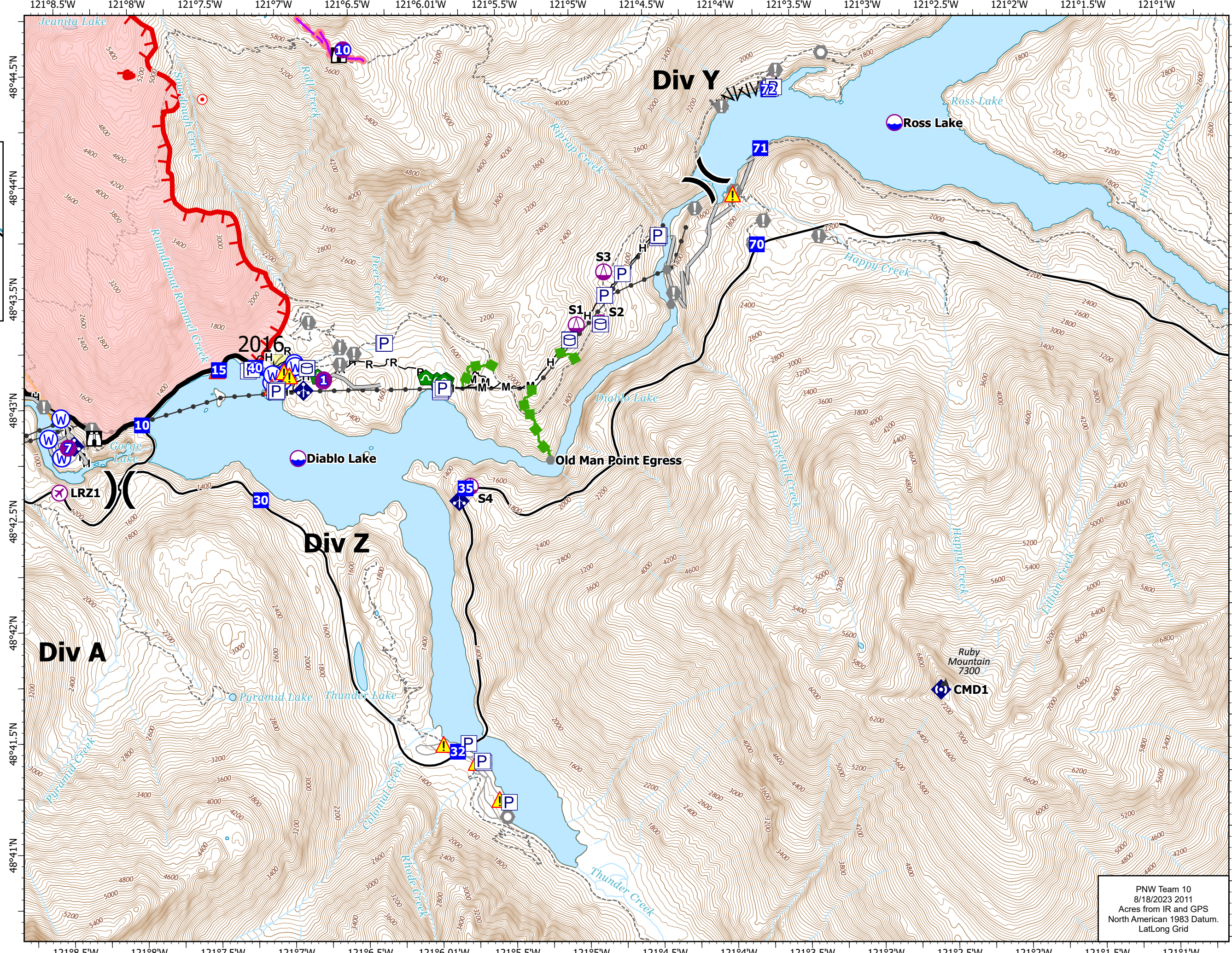
4868 acres at 08/18/23 1500

0 0.25 0.5 Miles



Page Number: 3

- Aerial Hazard
- UAS Launch and Recovery
- Dip Site
- Helispot
- Sling Site
- Division Break
- Drop Point
- Lookout
- Hot Spot - Spot Fire
- Value at Risk
- Other
- Landmark
- Gate
- Bridge
- Hazard Tree
- Culvert
- Mobile Weather Unit
- Repeater
- Hazard
- Water Source
- Wildfire Daily Fire Perimeter
- Completed Fuel Break
- Completed Hand Line
- Completed Mixed Construction Line
- Completed Road as Line
- Planned Hand Line
- Access or Improved Road
- Other
- Escape Route
- Retardant Drop
- Contained
- Uncontained
- Historic Structure
- Transmission Lines
- Fuels Treatments
- Fire History
- Seattle City Light Property
- Trail
- Mountain Peaks (ft)



PNW Team 10
8/18/2023 2011
Acres from IR and GPS
North American 1983 Datum.
LatLong Grid

Operations

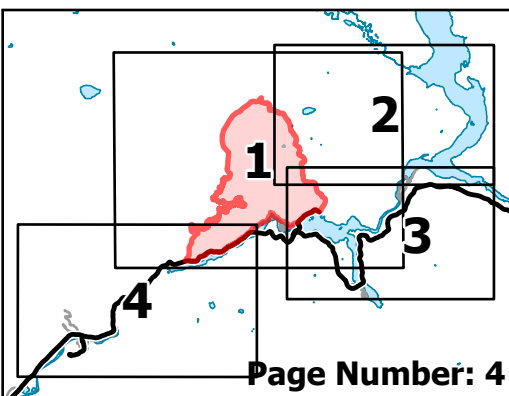
Sourdough

WA-NCP-000262

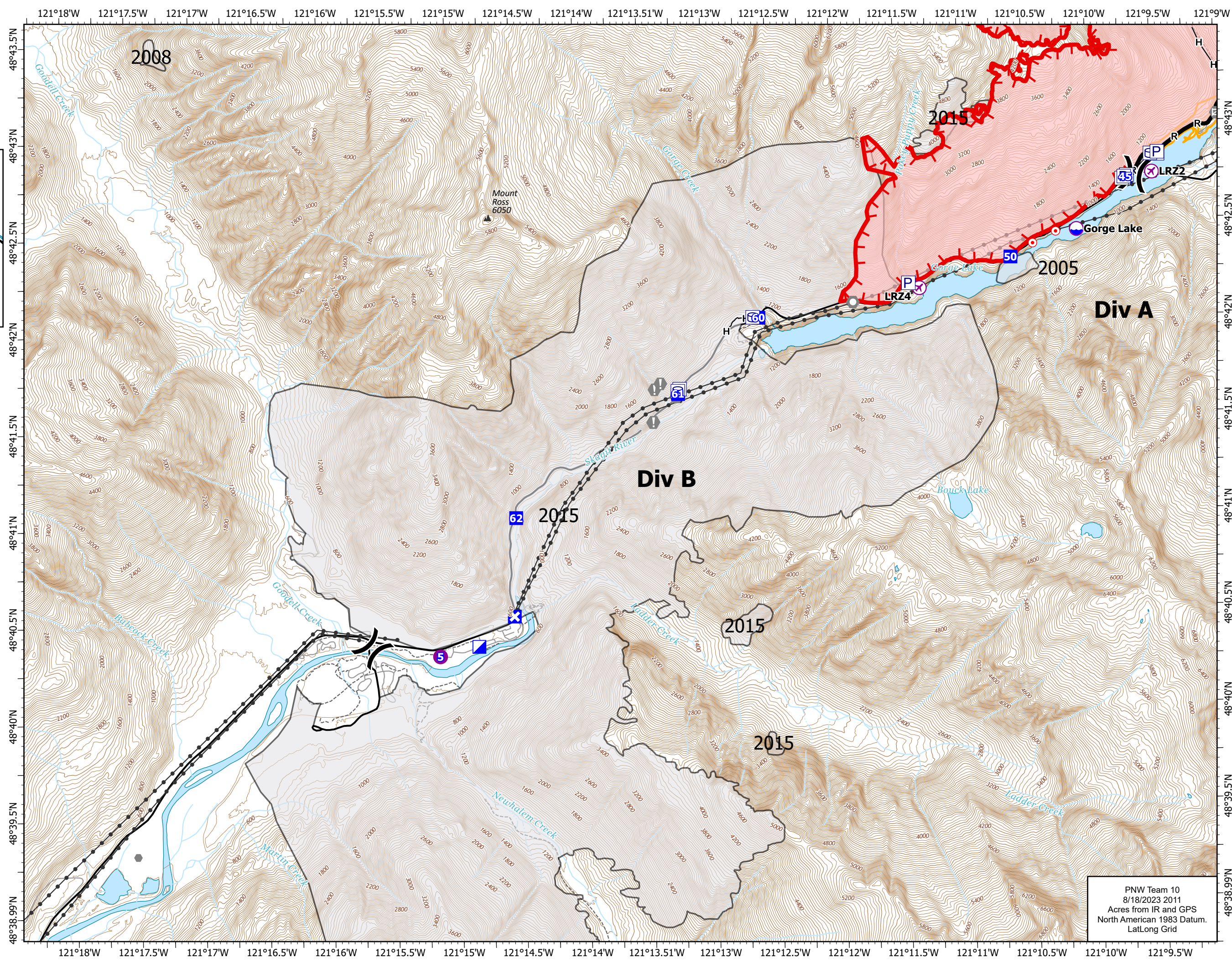
8/19/2023 Day

4868 acres at 08/18/23 1500

0 0.25 0.5 Miles



- ⊗ UAS Launch and Recovery
- ⊙ Dip Site
- ⊙ Helispot
-) (Division Break
- ▣ Incident Command Post
- ▣ Drop Point
- ⊗ Closure
- ⊙ Hot Spot - Spot Fire
- ⊙ Other
- ⊙ Landmark
- ⊙ Gate
- ▭ Wildfire Daily Fire Perimeter
- H— Completed Hand Line
- R— Completed Road as Line
- ▬ Contained
- ▬ Uncontained
- ⊙ Historic Structure
- Transmission Lines
- ▭ Fire History
- ▭ Seattle City Light Property
- - - Trail
- Label_Lines
- ▲ Mountain Peaks (ft)



PNW Team 10
8/18/2023 2011
Acres from IR and GPS
North American 1983 Datum.
Lat/Long Grid