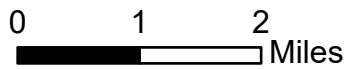


Pilot Map

Sourdough
WA-NCP-000262
8/19/2023 Day

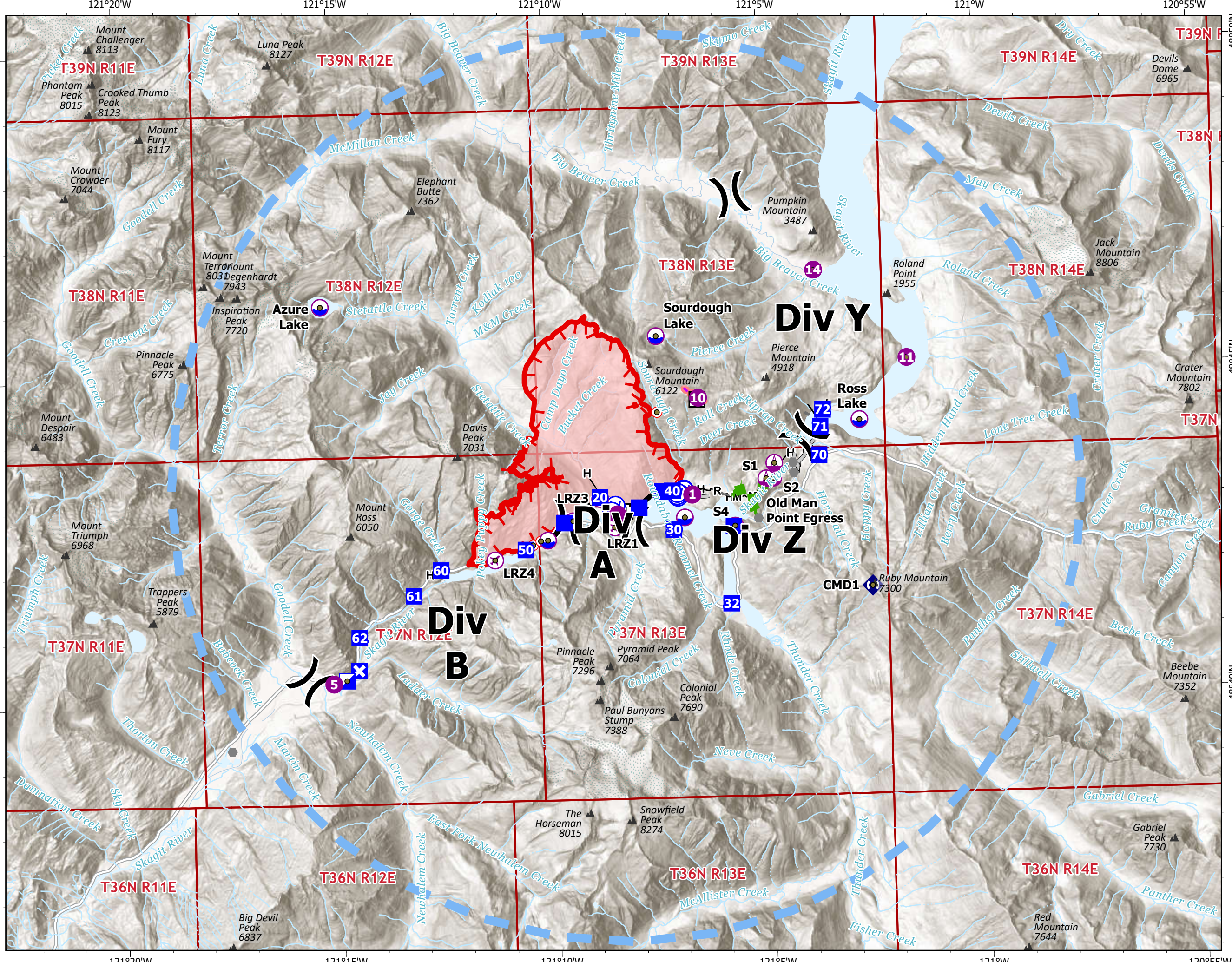
4868 acres at 08/18/23 1500



- Aerial Hazard
- UAS Launch & Recovery
- Dip Site
- Helispot
- Sling Site
- Division Break
- Incident Command Post
- Drop Point
- Closure
- Lookout
- Hot Spot - Spot Fire
- Other
- Repeater
- Water Source
- Wildfire Daily Fire Perimeter
- Completed Fuel Break
- Completed Hand Line
- Completed Mixed Construction Line
- Completed Road as Line
- Access or Improved Road
- Other
- Escape Route
- Retardant Drop
- Temporary Flight Restriction
- Contained
- Uncontained
- Mountain Peaks (ft)
- Perennial Stream
- Intermittent Stream
- AirOpsTablePoints_20230818_1951



NW IMT 10
8/18/2023 1959
Acres from IR and GPS
North American 1983 Datum. LatLong Grid



FeatureCategory	Label	Elevation (ft)	Comments	Latitude	Longitude
Helispot	7	895	Diablo LZ	48° 42.826' N	121° 08.468' W
Helispot	5	504	Newhalem LZ	48° 40.313' N	121° 15.133' W
Helibase	1	265	Concrete Helibase	48° 31.820' N	121° 45.524' W
Helibase	3	361	Marblemount Helibase	48° 32.350' N	121° 26.837' W
Helispot	10	5935	Sourdough Lookout LZ	48° 44.587' N	121° 06.535' W
Repeater	CMD1	7373		48° 41.643' N	121° 02.582' W
Repeater	LOGS Hub	5362		48° 31.141' N	121° 35.935' W
Dip Site	Diablo Lake	1204	Diablo Lake	48° 42.754' N	121° 06.908' W
Dip Site	Ross Lake	1553	Ross Lake	48° 44.197' N	121° 02.800' W
Dip Site	Azure Lake	4059	Azure Lake	48° 46.105' N	121° 15.269' W
Dip Site	Gorge Lake	876	Gorge Lake	48° 42.449' N	121° 10.097' W
Dip Site	Sourdough Lake	4616	Sourdough Lake	48° 45.548' N	121° 07.483' W
Helispot	11	1602	Approved for Type 3	48° 45.132' N	121° 01.671' W
Incident Command Post		515	New ICP with IMT NW 10 incoming	48° 40.360' N	121° 14.829' W
Sling Site	S2	1955	Ross Sling DIV Zulu 150' Long Line	48° 43.330' N	121° 04.832' W
Sling Site	S4	1711		48° 42.609' N	121° 05.743' W
Sling Site	S1	2222	Label as S1	48° 43.324' N	121° 04.997' W
Sling Site	S3	1773	Label as S3	48° 43.559' N	121° 04.802' W
Helispot	1	1328	Approved helispot for type 2 and 3	48° 43.105' N	121° 06.721' W
Aerial Hazard		1330	Power lines south of Helispot	48° 43.100' N	121° 06.725' W
Repeater	CMD 2	5702	CMD 2 per Bryan Massey 8/11/23	48° 33.135' N	121° 19.755' W
Airstrip or Airport	LRZ1	1166	UAS Launch and receive site (LRZ1)	48° 42.625' N	121° 08.534' W
Hot Spot - Spot Fire		944	1/10th of an acre	48° 42.381' N	121° 10.441' W
Hot Spot - Spot Fire		906	30ft by 30ft	48° 42.439' N	121° 10.259' W
Airstrip or Airport	LRZ2	890	UAS Launch and receive site (LRZ2)	48° 42.736' N	121° 09.499' W
Airstrip or Airport	LRZ3	898	UAS Launch and receive site (LRZ3)	48° 43.068' N	121° 08.865' W
Helispot	14	1597	Beaver HS. ~100' onshore beach. Grassy	48° 46.510' N	121° 03.787' W
Airstrip or Airport	LRZ4	962	UAS LRZ West Flank LRZ 4	48° 42.162' N	121° 11.332' W
Hot Spot - Spot Fire		4288		48° 44.379' N	121° 07.499' W