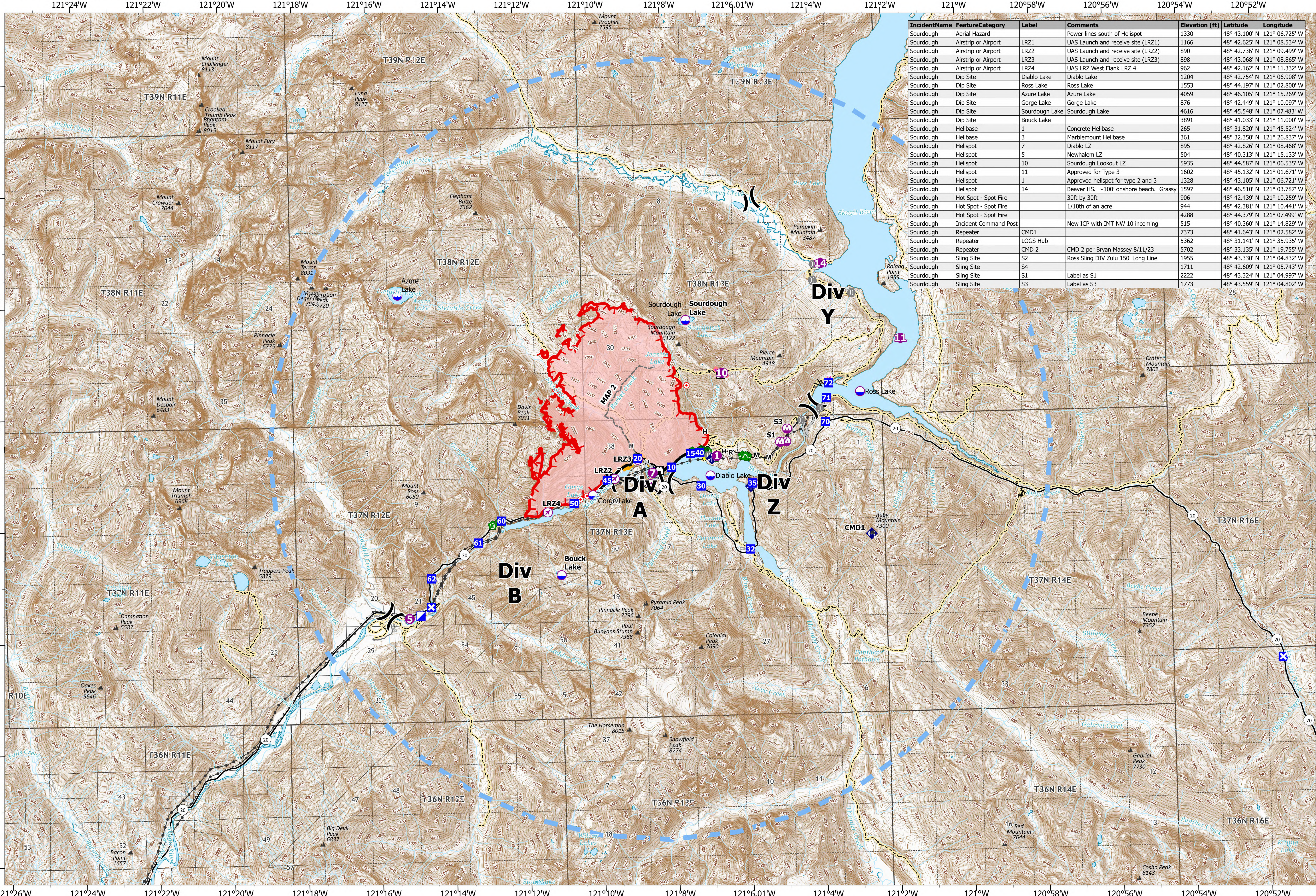


Air Operations



IncidentName	FeatureCategory	Label	Comments	Elevation (ft)	Latitude	Longitude
Sourdough	Aerial Hazard		Power lines south of HeliSpot	1330	48° 43.100' N	121° 06.725' W
Sourdough	Airstrip or Airport	LR21	UAS Launch and receive site (LR21)	1166	48° 42.625' N	121° 08.534' W
Sourdough	Airstrip or Airport	LR22	UAS Launch and receive site (LR22)	890	48° 42.736' N	121° 09.499' W
Sourdough	Airstrip or Airport	LR23	UAS Launch and receive site (LR23)	898	48° 43.068' N	121° 08.865' W
Sourdough	Airstrip or Airport	LR24	UAS LRZ West Flank LRZ 4	962	48° 42.162' N	121° 11.332' W
Sourdough	Dip Site	Diablo Lake	Diablo Lake	1204	48° 42.754' N	121° 06.908' W
Sourdough	Dip Site	Ross Lake	Ross Lake	1553	48° 44.197' N	121° 02.800' W
Sourdough	Dip Site	Azure Lake	Azure Lake	4059	48° 46.105' N	121° 15.269' W
Sourdough	Dip Site	Gorge Lake	Gorge Lake	876	48° 42.449' N	121° 10.097' W
Sourdough	Dip Site	Sourdough Lake	Sourdough Lake	4616	48° 45.548' N	121° 07.483' W
Sourdough	Dip Site	Bouck Lake	Bouck Lake	3891	48° 41.033' N	121° 11.000' W
Sourdough	Helibase	1	Concrete Helibase	265	48° 31.820' N	121° 45.524' W
Sourdough	Helibase	3	Marblemount Helibase	361	48° 32.350' N	121° 26.837' W
Sourdough	Helibase	7	Diablo LZ	895	48° 42.826' N	121° 08.468' W
Sourdough	Helispot	5	Newhalem LZ	504	48° 40.313' N	121° 15.133' W
Sourdough	Helispot	10	Sourdough Lookout LZ	5935	48° 44.587' N	121° 06.535' W
Sourdough	Helispot	11	Approved for Type 3	1602	48° 45.132' N	121° 01.671' W
Sourdough	Helispot	1	Approved Helispot for type 2 and 3	1328	48° 43.105' N	121° 06.721' W
Sourdough	Helispot	14	Beaver HS. ~100' onshore beach. Grassy	1597	48° 46.510' N	121° 03.787' W
Sourdough	Hot Spot - Spot Fire		30ft by 30ft	906	48° 42.439' N	121° 10.259' W
Sourdough	Hot Spot - Spot Fire		1/10th of an acre	944	48° 42.381' N	121° 10.441' W
Sourdough	Hot Spot - Spot Fire			4288	48° 44.379' N	121° 07.499' W
Sourdough	Incident Command Post		New ICP with IMT NW 10 incoming	515	48° 40.360' N	121° 14.829' W
Sourdough	Repeater	CMD1		7373	48° 41.643' N	121° 02.582' W
Sourdough	Repeater	LOGS Hub		5362	48° 31.141' N	121° 35.935' W
Sourdough	Repeater	CMD 2	CMD 2 per Bryan Massey 8/11/23	5702	48° 33.135' N	121° 19.755' W
Sourdough	Sling Site	S2	Ross Sling Div Zulu 150' Long Line	1955	48° 43.330' N	121° 04.832' W
Sourdough	Sling Site	54		1711	48° 42.609' N	121° 05.743' W
Sourdough	Sling Site	51	Label as S1	2222	48° 43.324' N	121° 04.997' W
Sourdough	Sling Site	S3	Label as S3	1773	48° 43.559' N	121° 04.802' W

Sourdough
WA-NCP-000262
8/20/2023
 5618 acres at 08/18/23 @1115

- Aerial Hazard
- X Division Break
- Hot Spot - Spot Fire
- ◆ Repeater
- ◆ Planned Hand Line
- ◆ Temporary Flight Restriction
- ◆ UAS Launch and Recovery
- Incident Command Post
- Bridge
- ◆ Completed Fuel Break
- ◆ Access or Improved Road
- ◆ Dip Site
- Drop Point
- Culvert
- ◆ Completed Hand Line
- ◆ Contained
- ◆ Helispot
- Closure
- Clean Up Area
- ◆ Completed Mixed Construction Line
- ◆ Highlighted Feature
- ◆ Uncontained
- ◆ Other
- ◆ Sling Site
- Lookout
- ◆ Mobile Weather Unit
- ◆ Completed Road as Line
- ◆ Retardant Drop
- ◆ NOCA Trails
- ◆ Paved Road

8/19/2023 1959
 Acres from IR and GPS
 North American 1983 Datum. Lat/Long Grid

0 0.5 1 2 3 Miles