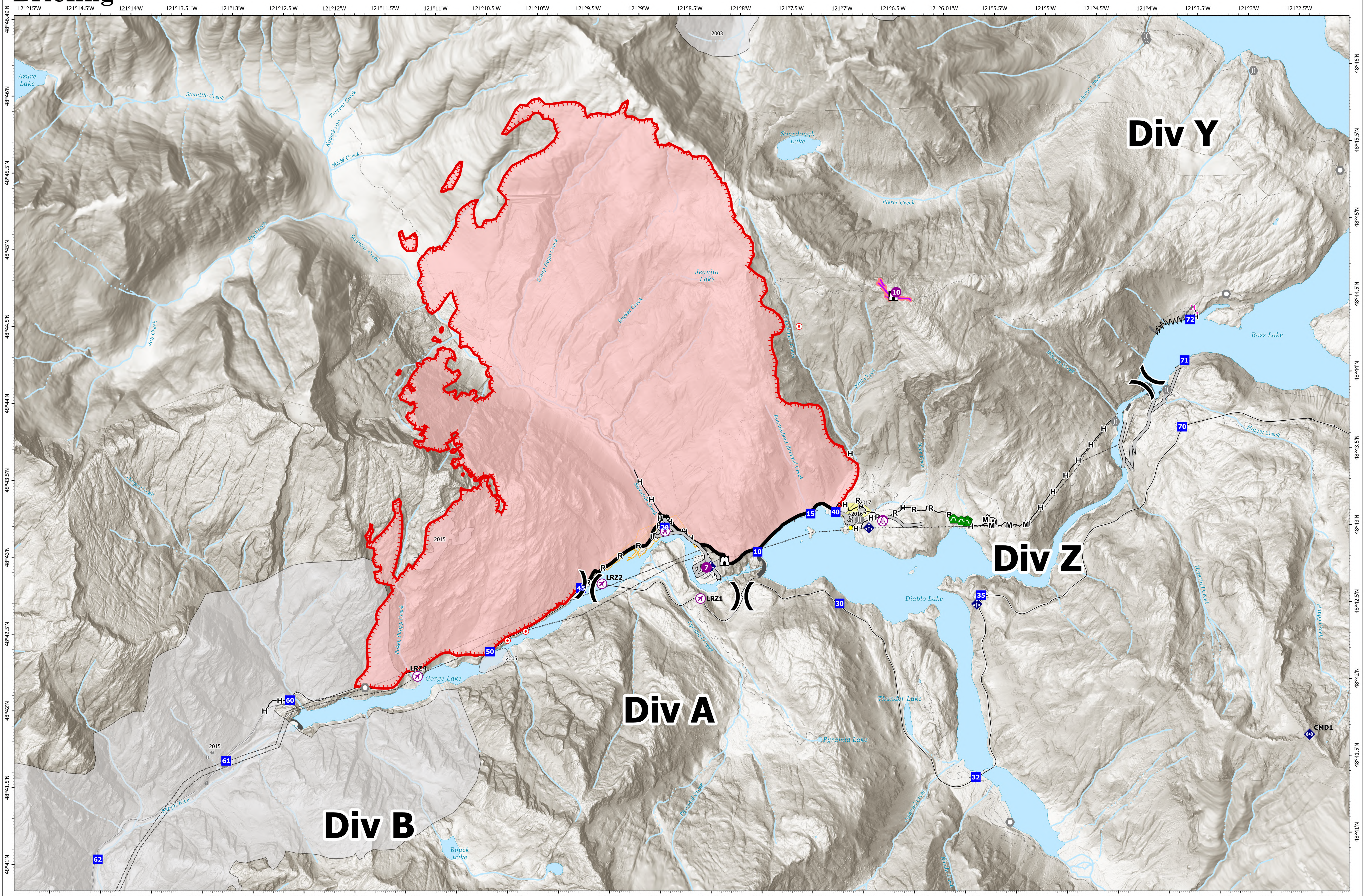





# Briefing



**Sourdough**  
**WA-NCP-000262**  
**8/20/2023**  
5618 acres at 08/19/23 @1115  
8/19/2023 2023  
Acres from IR and GPS

- |                               |                              |                        |                                     |                  |
|-------------------------------|------------------------------|------------------------|-------------------------------------|------------------|
| ■ Structures                  | — Local Road                 | ⊠ Lookout              | △ Completed Fuel Break              | — Other          |
| ⊙ Historic Structure          | ⋯ Trail                      | ⊙ Hot Spot - Spot Fire | — Completed Hand Line               | ⊙ Retardant Drop |
| ⊙ Transmission Lines          | ⊙ Aerial Hazard              | ⊙ Tunnel               | — Completed Mixed Construction Line | ⊙ Contained      |
| ■ Fuels Treatments            | ⊙ UAS Launch & Recovery Zone | ⊙ Bridge               | — Completed Road as Line            | ⊙ Uncontained    |
| ■ Fire History                | ⊙ Helispot                   | ⊙ Culvert              | ⊙ Planned Hand Line                 |                  |
| ■ Seattle City Light Property | ⊙ Division Break             | ⊙ Mobile Weather Unit  | ⊙ Access or Improved Road           |                  |
| — Paved Road                  | ⊙ Drop Point                 | ⊙ Repeater             | ⊙ Highlighted Feature               |                  |

North American 1983 Datum. LatLong Grid



0 0.5 1 2 Miles