

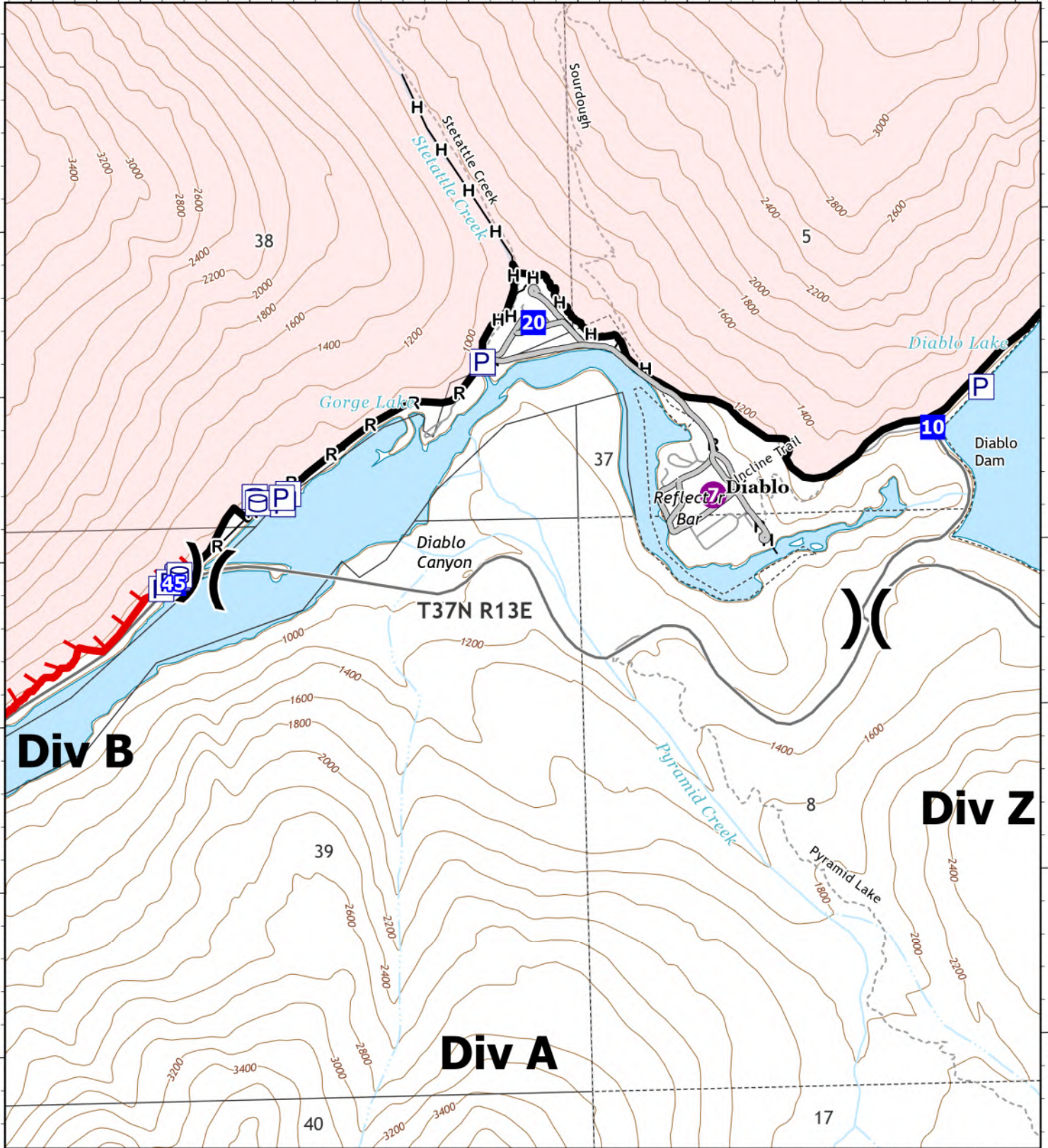
IAP
Main
Sourdough
WA-NCP-000262
8/20/2023
5618 acres at 08/19/23 @ 1115

- | | | |
|----------------------|-----------------------------------|----------------|
| Pump | Completed Hand Line | Escape Route |
| Water Tank | Completed Mixed Construction Line | Retardant Drop |
| Helispot | Completed Road as Line | Contained |
| Division Break | Planned Hand Line | Uncontained |
| Drop Point | Access or Improved Road | Trail |
| Completed Fuel Break | Highlighted Feature | |
| Other | | |



121°10'W

121°8'W



48°42'N

48°42'N

121°10'W

121°8'W

IAP
Div A
Sourdough
WA-NCP-000262
8/20/2023
 5618 acres at 08/19/23 @ 1115

- Pump
- Water Tank
- Helispot
- Division Break
- Drop Point
- Completed Hand Line
- Completed Road as Line
- Access or Improved Road
- Contained
- Uncontained
- Trail

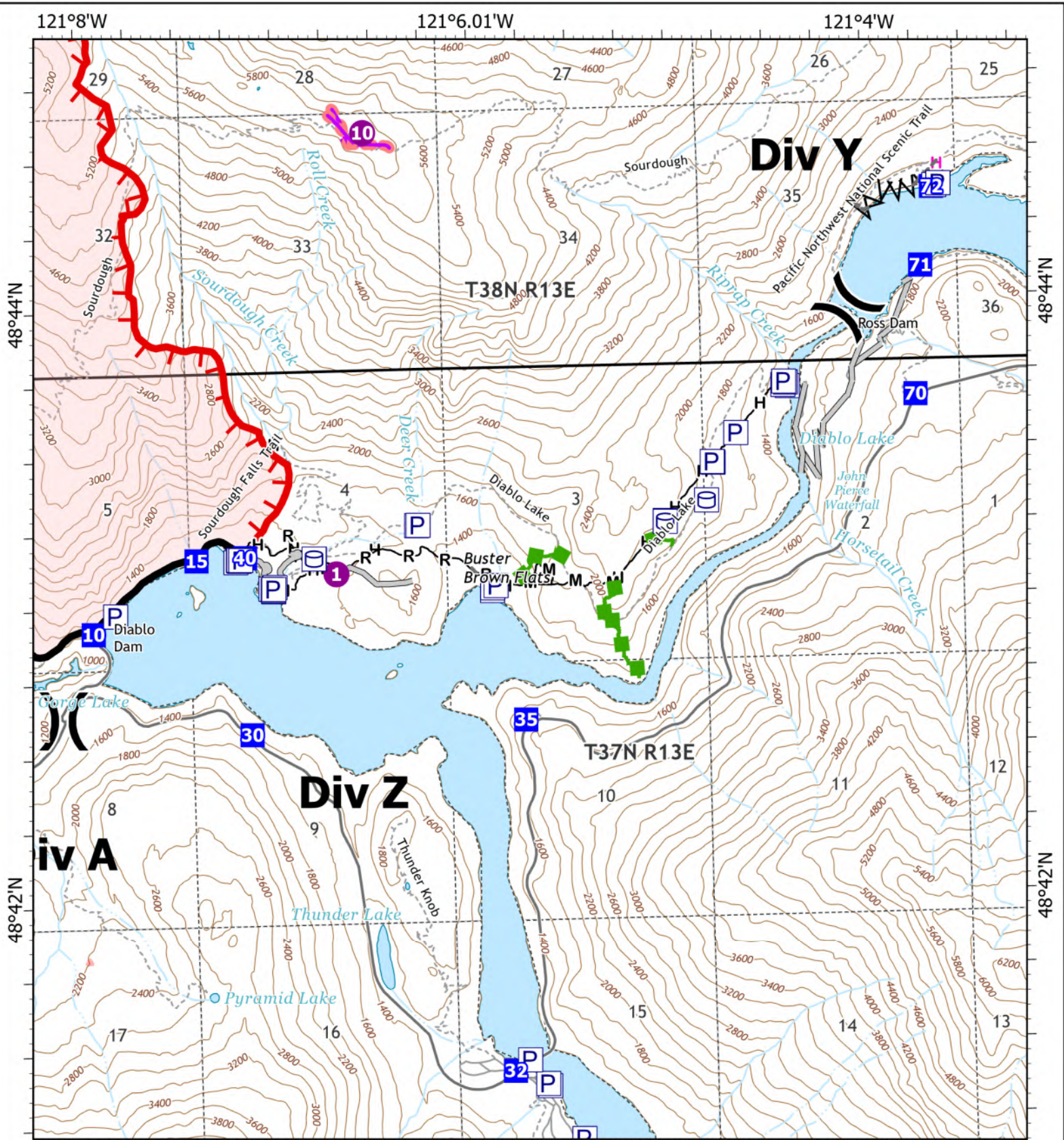


8/19/2023 2025
 Acres from IR and GPS

North American Datum
 Lat/Long Grid

0 0.13 0.25 0.5
 Miles

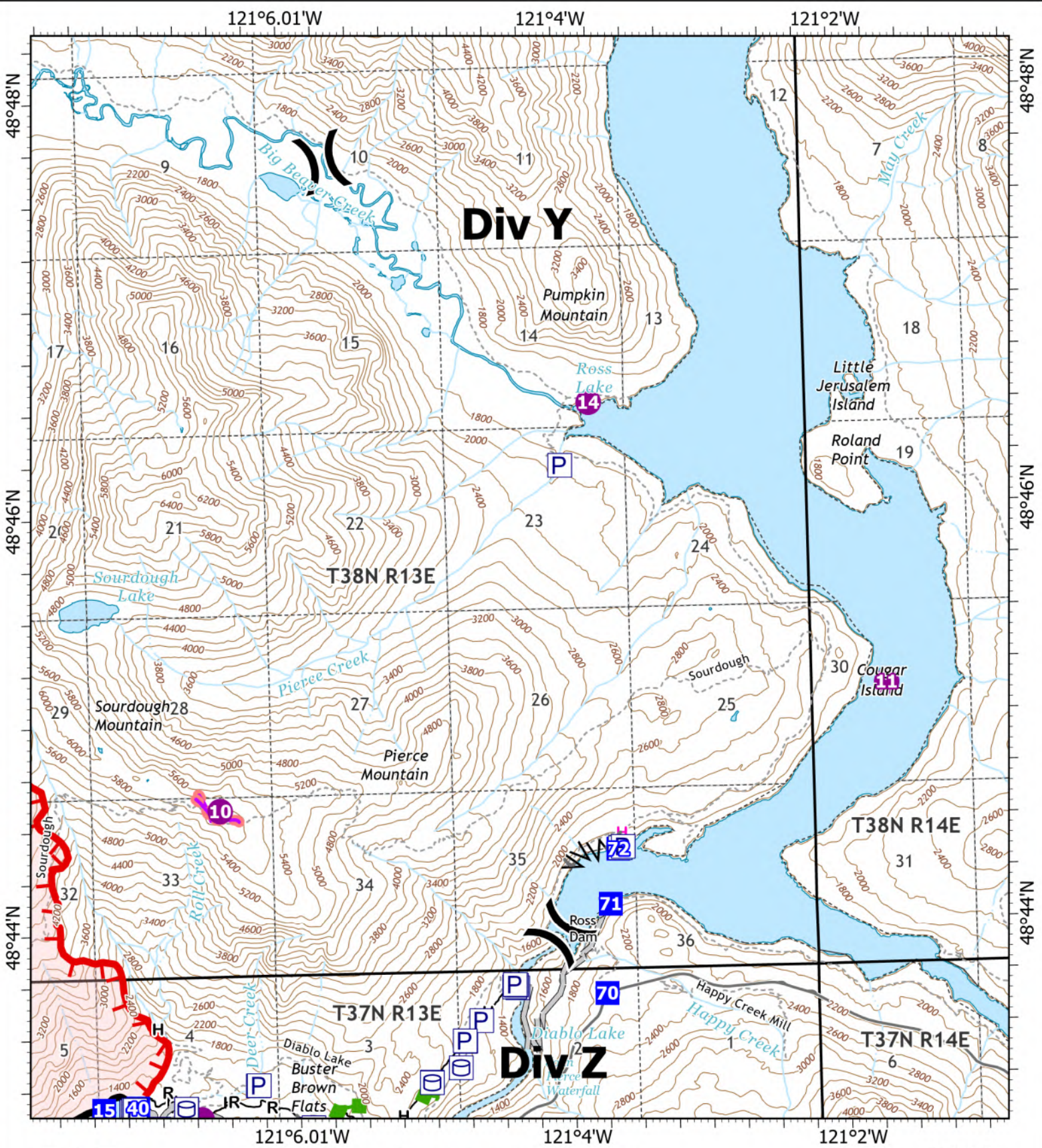




IAP
Div Z
Sourdough
WA-NCP-000262
8/20/2023
5618 acres at 08/19/23 @ 1115

- P Pump
- W Water Tank
- Helispot
- ⌘ Division Break
- Drop Point
- ⚓ Completed Fuel Break
- H- Completed Hand Line
- M- Completed Mixed Construction Line
- R- Completed Road as Line
- Access or Improved Road
- Highlighted Feature
- Escape Route
- Retardant Drop
- Contained
- Uncontained
- - - Trail
- Other

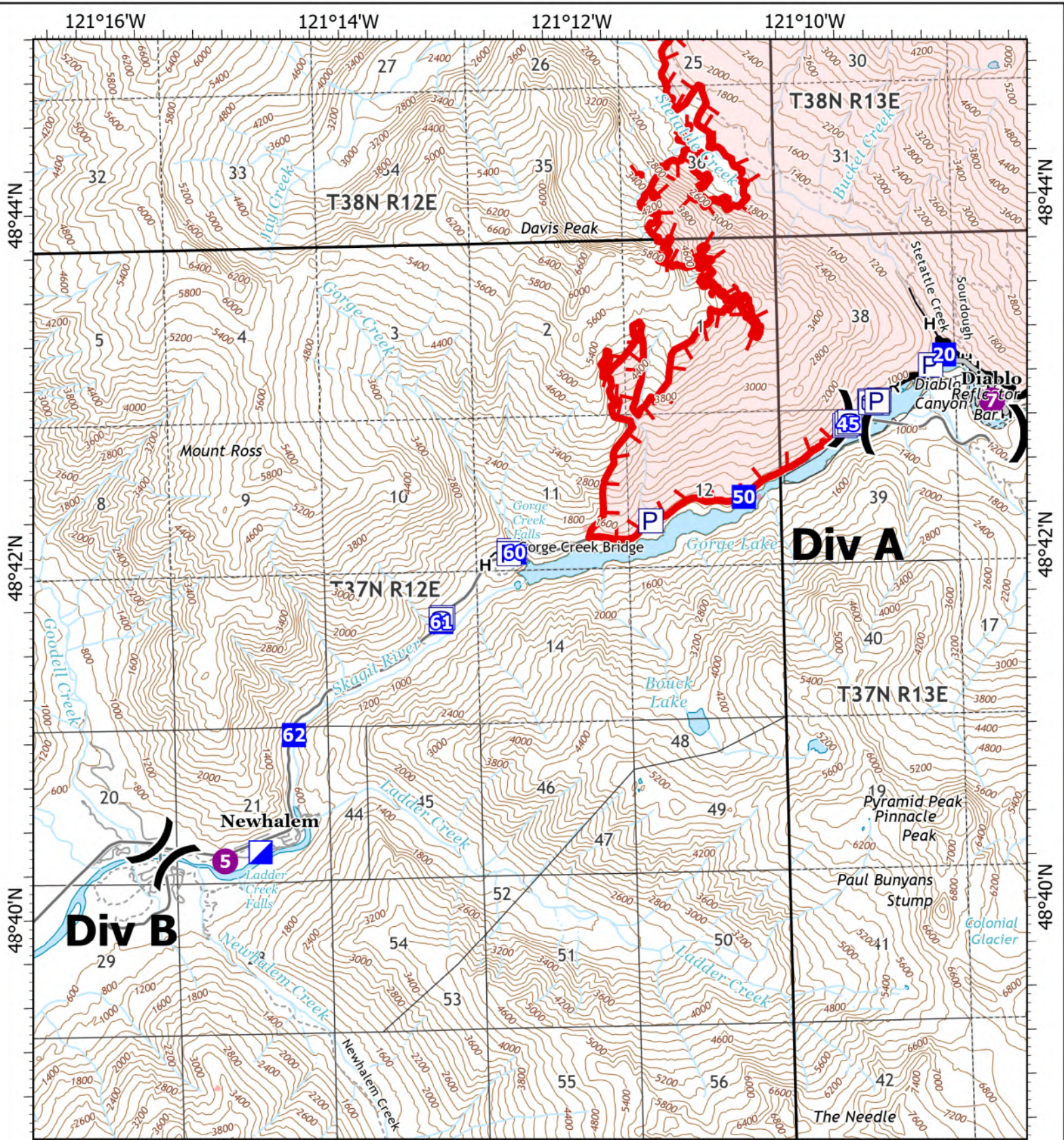




IAP
Div Y
Sourdough
WA-NCP-000262
8/20/2023
 5618 acres at 08/19/23 @ 1115

- P Pump
- W Water Tank
- Helispot
- x Division Break
- Drop Point
- ▲ Completed Fuel Break
- H Completed Hand Line
- M Completed Mixed Construction Line
- R Completed Road as Line
- H Planned Hand Line
- Access or Improved Road
- Other
- Escape Route
- Retardant Drop
- ▭ Contained
- ▭ Uncontained
- - - Trail





IAP
Div B
Sourdough
WA-NCP-000262
8/20/2023

5618 acres at 08/19/23 @ 1115

- Pump
- Water Tank
- Helispot
- Division Break
- Incident Command Post
- Drop Point
- Completed Hand Line
- Completed Road as Line
- Access or Improved Road
- Contained
- Uncontained
- Trail



8/19/2023 2025
 Acres from IR and GPS

North American Datum
 Lat/Long Grid

