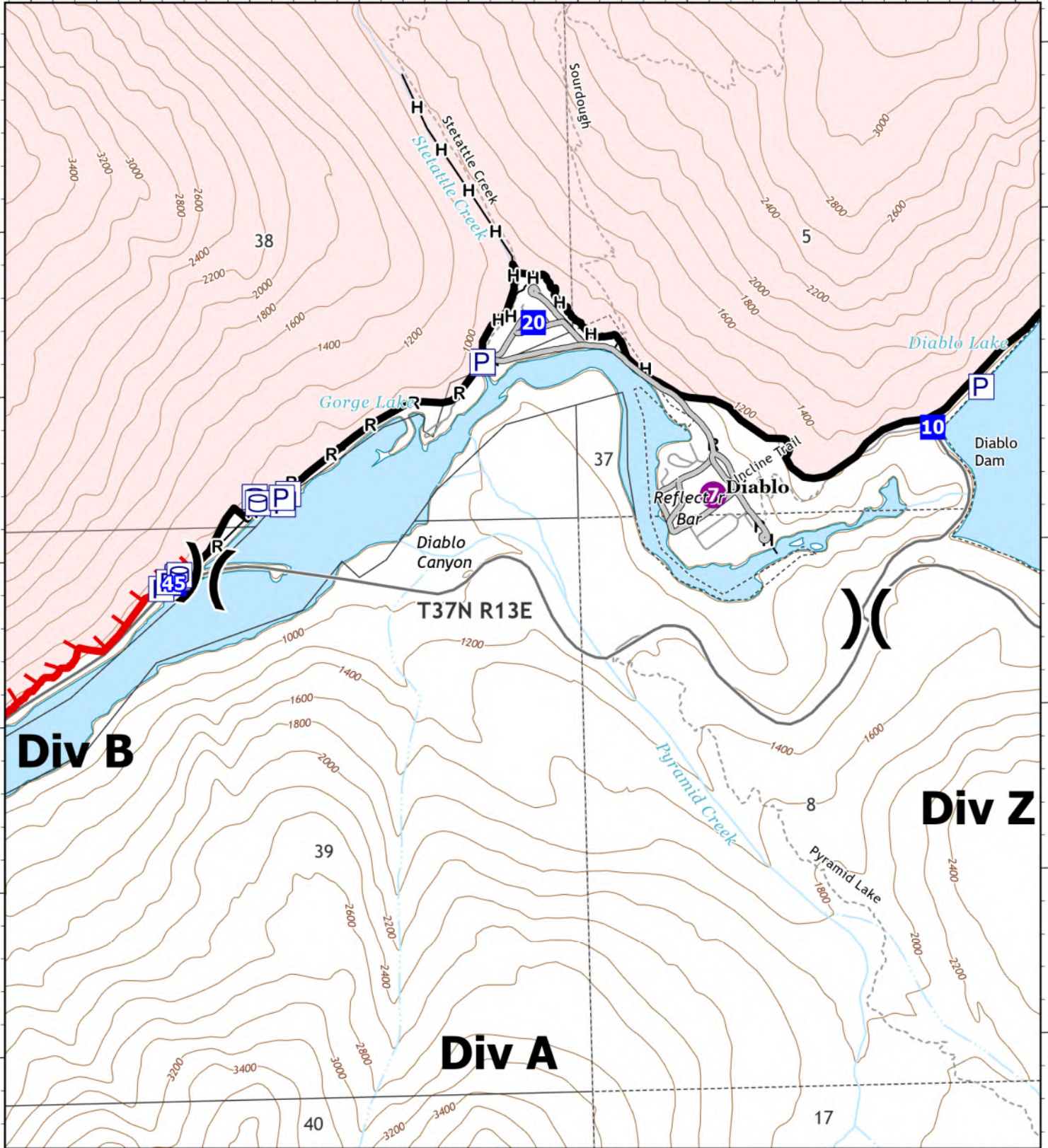


121°10'W

121°8'W



48°42'N

48°42'N

121°10'W

121°8'W

IAP
Div A
Sourdough
WA-NCP-000262
8/20/2023
 5618 acres at 08/19/23 @ 1115

- Pump
- Water Tank
- Helispot
- Division Break
- Drop Point
- Completed Hand Line
- Completed Road as Line
- Access or Improved Road
- Contained
- Uncontained
- Trail



8/19/2023 2029
 Acres from IR and GPS

North American Datum
 Lat/Long Grid

0 0.13 0.25 0.5
 Miles

