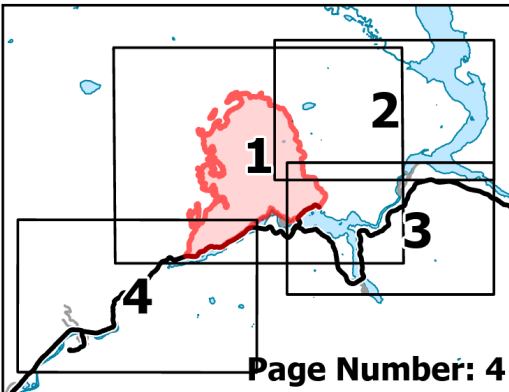





Operations

Sourdough
WA-NCP-000262
8/20/2023

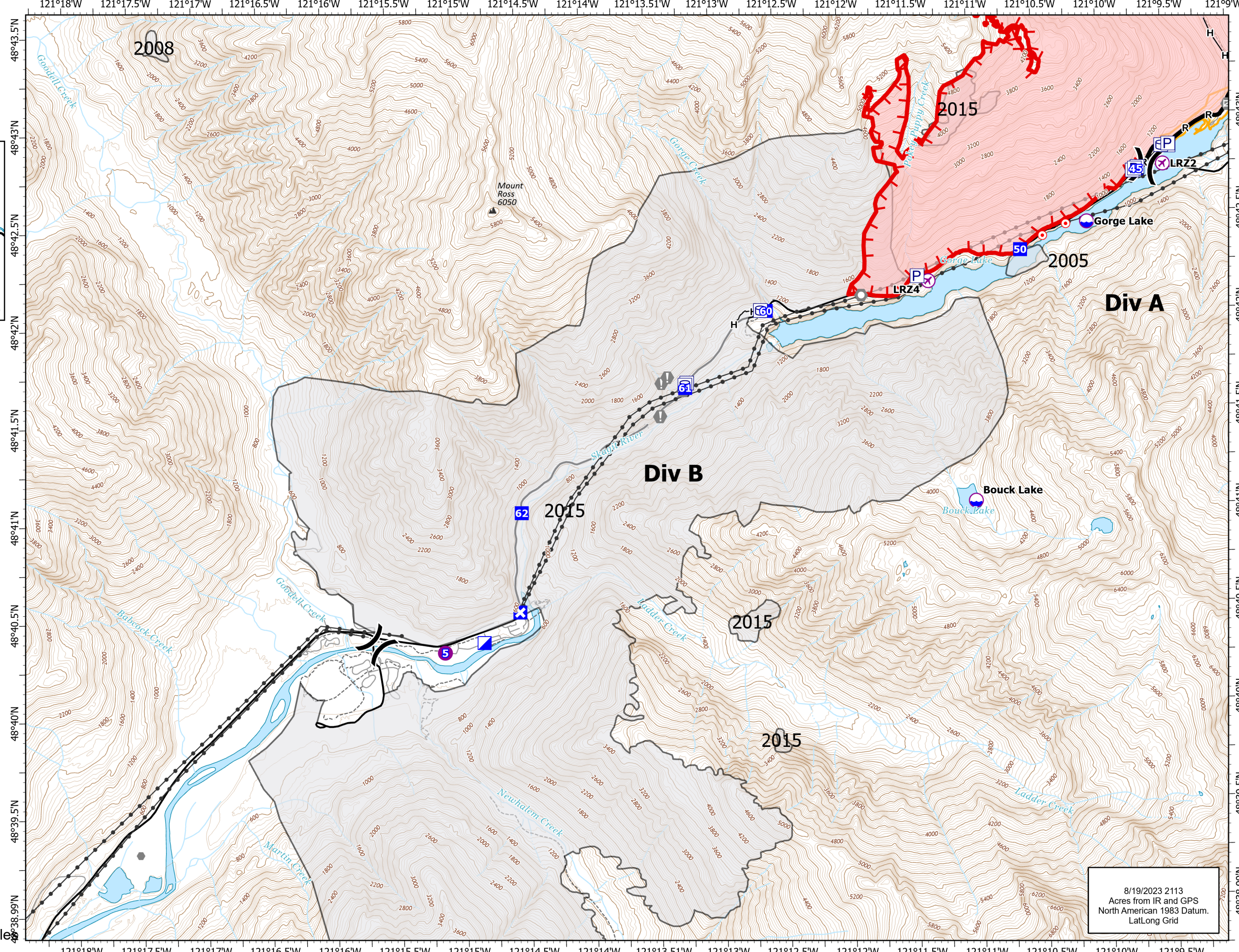
5618 acres at 08/19/23 @1115



- UAS Launch and Recovery
- Dip Site
- Helispot
- Division Break
- Incident Command Post
- Drop Point
- Closure
- Hot Spot - Spot Fire
- Other
- Landmark
- Gate
- Wildfire Daily Fire Perimeter
- Completed Hand Line
- Completed Road as Line
- Contained
- Uncontained
- Historic Structure
- Transmission Lines
- Fire History
- Seattle City Light Property
- Trail
- Label_Lines
- Mountain Peaks (ft)



0 0.25 0.5 1 Mile



8/19/2023 2113
Acres from IR and GPS
North American 1983 Datum.
Lat/Long Grid