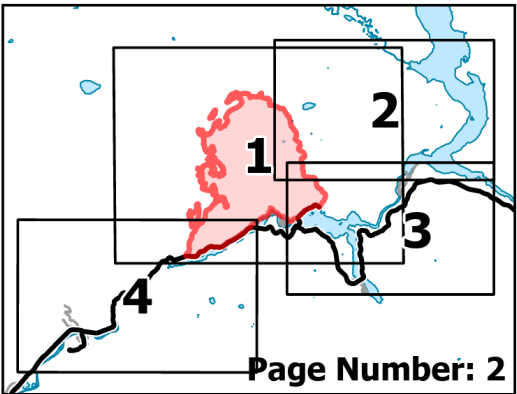


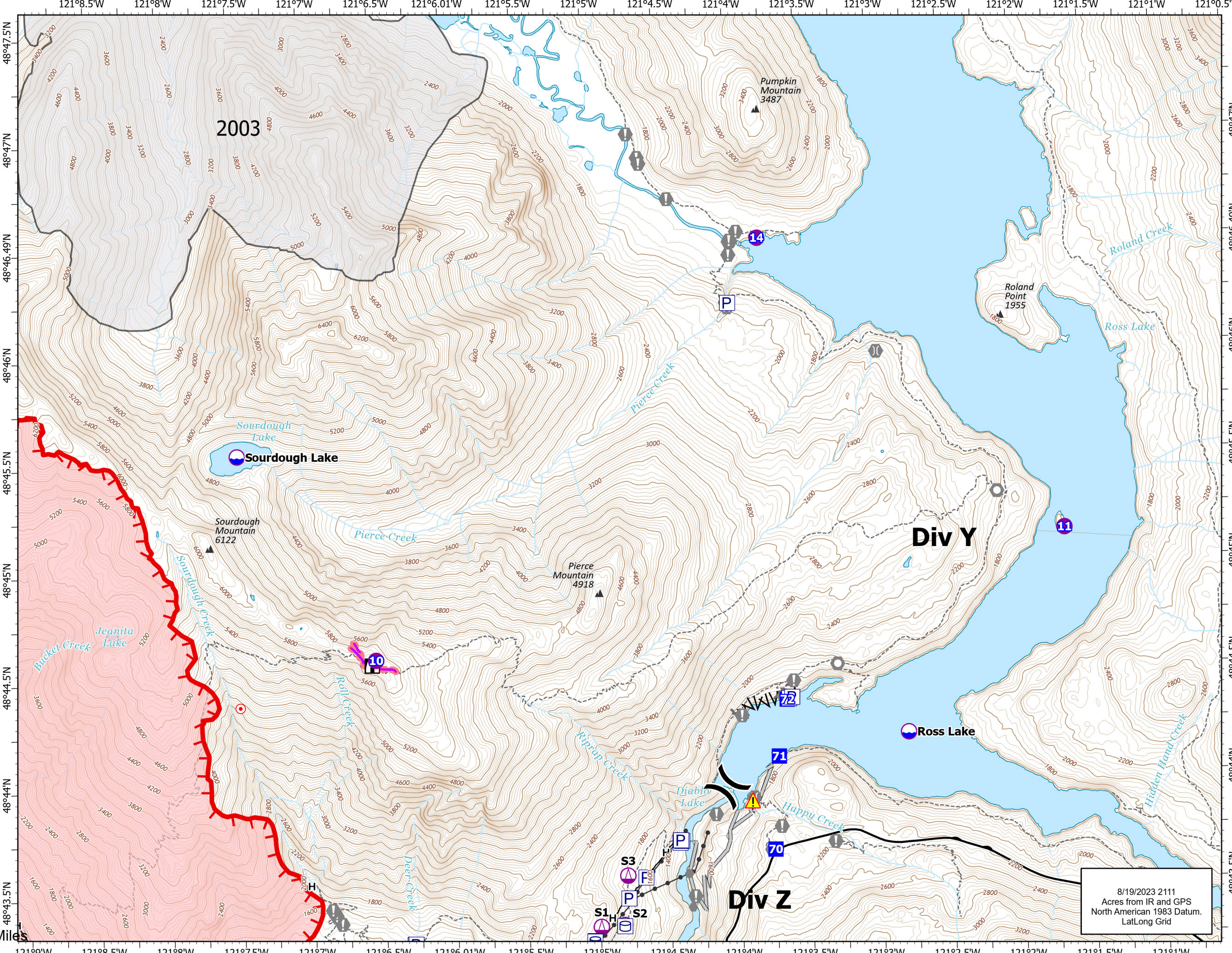
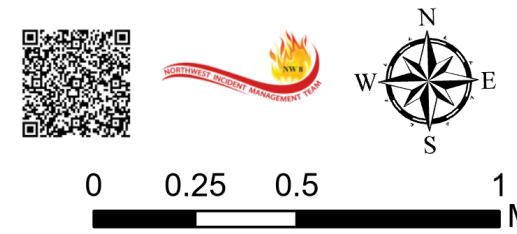
Operations

Sourdough
WA-NCP-000262
8/20/2023

5618 acres at 08/19/23 @1115



- Dip Site
- Helispot
- Sling Site
- Division Break
- Drop Point
- Lookout
- Hot Spot - Spot Fire
- Value at Risk
- Other
- Landmark
- Bridge
- Hazard
- Wildfire Daily Fire Perimeter
- Completed Fuel Break
- Completed Hand Line
- Planned Hand Line
- Access or Improved Road
- Other
- Retardant Drop
- Uncontained
- Historic Structure
- Transmission Lines
- Fire History
- Trail
- Mountain Peaks (ft)



8/19/2023 2111
Acres from IR and GPS
North American 1983 Datum.
Lat/Long Grid