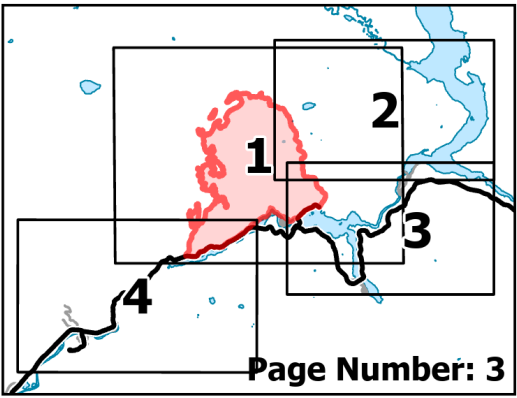


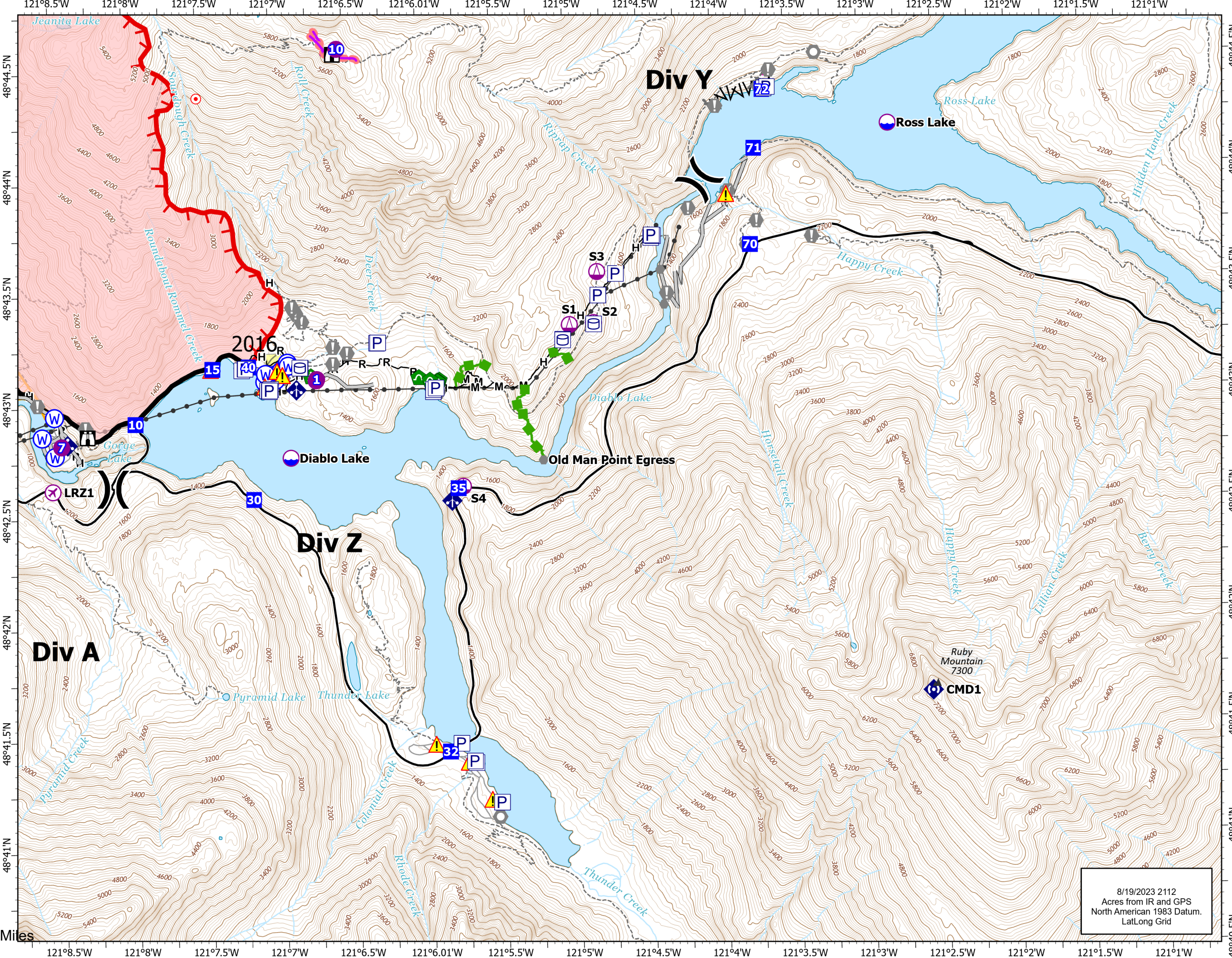
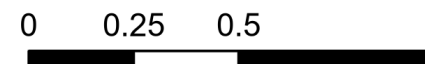
Operations

Sourdough
WA-NCP-000262
8/20/2023

5618 acres at 08/19/23 @1115



- ⊙ Aerial Hazard
- ⊙ UAS Launch and Recovery
- ⊙ Dip Site
- ⊙ Helispot
- ⊙ Sling Site
- ⊙ Division Break
- ⊙ Drop Point
- ⊙ Lookout
- ⊙ Hot Spot - Spot Fire
- ⊙ Value at Risk
- ⊙ Other
- ⊙ Landmark
- ⊙ Gate
- ⊙ Bridge
- ⊙ Hazard Tree
- ⊙ Culvert
- ⊙ Mobile Weather Unit
- ⊙ Repeater
- ⊙ Hazard
- ⊙ Water Source
- ▬ Wildfire Daily Fire Perimeter
- ▬ Completed Fuel Break
- ▬ Completed Hand Line
- ▬ Completed Mixed Construction Line
- ▬ Completed Road as Line
- ▬ Planned Hand Line
- ▬ Access or Improved Road
- Highlighted Feature
- ▬ Other
- ▬ Escape Route
- ▬ Retardant Drop
- ▬ Contained
- ▬ Uncontained
- ⊙ Historic Structure
- ▬ Transmission Lines
- ▬ Fuels Treatments
- ▬ Fire History
- ▬ Seattle City Light Property
- ▬ Trail
- ▲ Mountain Peaks (ft)



8/19/2023 2112
Acres from IR and GPS
North American 1983 Datum.
Lat/Long Grid