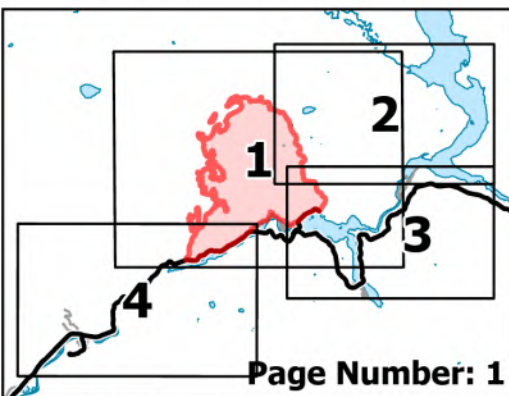


Operations

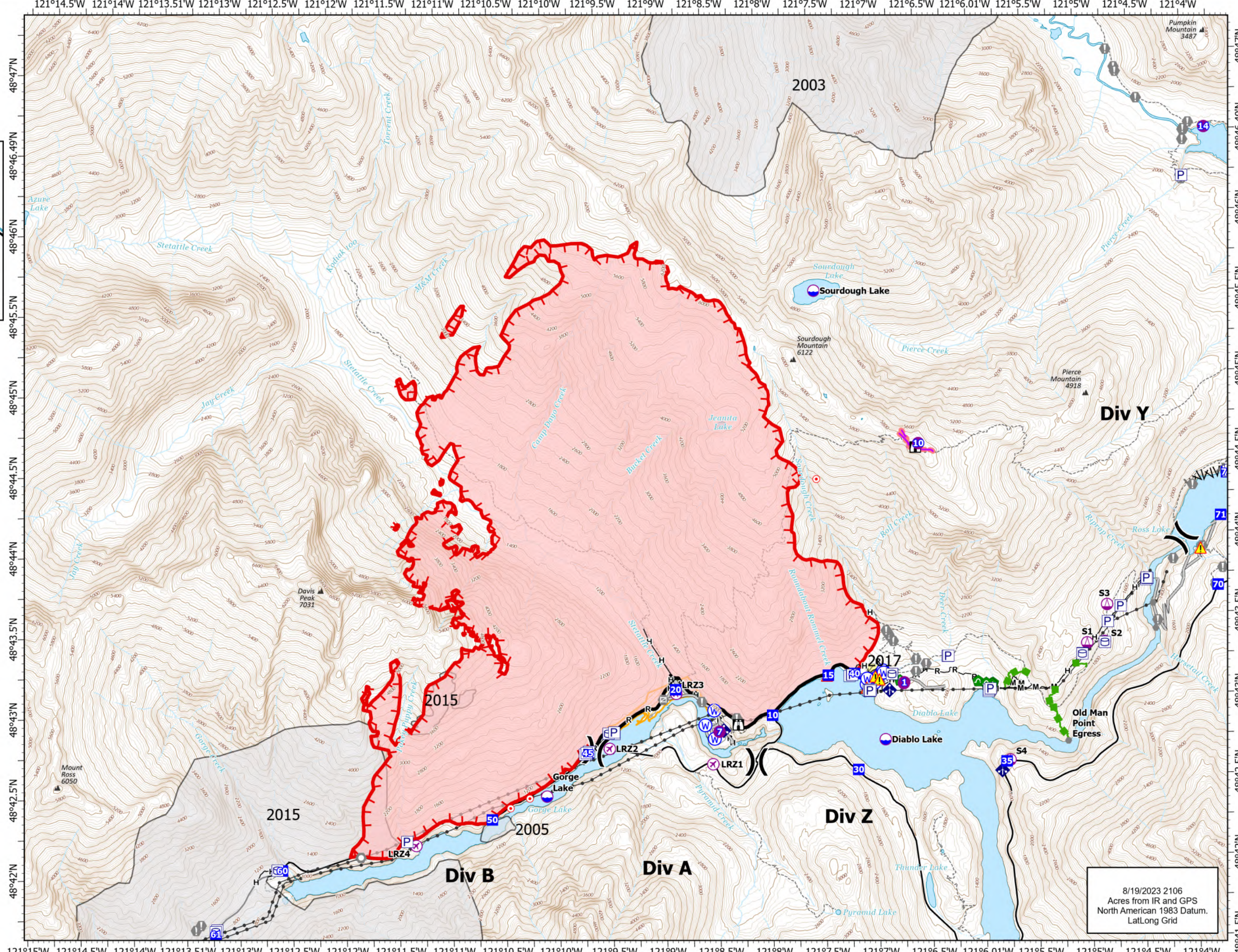
Sourdough
WA-NCP-000262
8/20/2023

5618 acres at 08/19/23 @1115



Page Number: 1

- ⊗ Aerial Hazard
- ⊗ UAS Launch and Recovery
- ⊗ Dip Site
- ⊗ Helispot
- ⊗ Sling Site
- ⊗ Division Break
- ⊗ Drop Point
- ⊗ Lookout
- ⊗ Hot Spot - Spot Fire
- ⊗ Value at Risk
- ⊗ Other
- ⊗ Landmark
- ⊗ Gate
- ⊗ Bridge
- ⊗ Hazard Tree
- ⊗ Culvert
- ⊗ Mobile Weather Unit
- ⊗ Hazard
- ⊗ Water Source
- ▭ Wildfire Daily Fire Perimeter
- ▭ Completed Fuel Break
- ▭ Completed Hand Line
- ▭ Completed Mixed Construction Line
- ▭ Completed Road as Line
- ▭ Planned Hand Line
- ▭ Access or Improved Road
- ▭ Highlighted Feature
- ▭ Other
- ▭ Escape Route
- ▭ Retardant Drop
- ▭ Contained
- ▭ Uncontained
- ▭ Historic Structure
- ▭ Transmission Lines
- ▭ Fuels Treatments
- ▭ Fire History
- ▭ Seattle City Light Property
- ▭ Trail
- ▭ Mountain Peaks (ft)

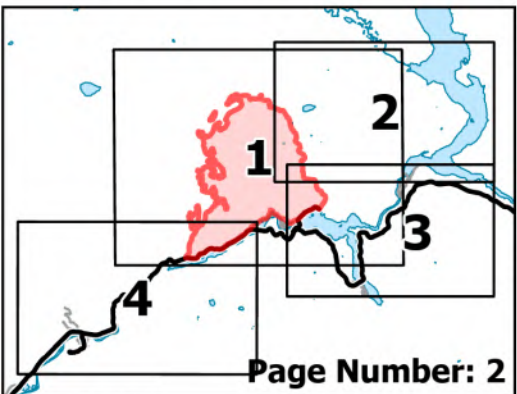


8/19/2023 2106
Acres from IR and GPS
North American 1983 Datum.
LatLong Grid

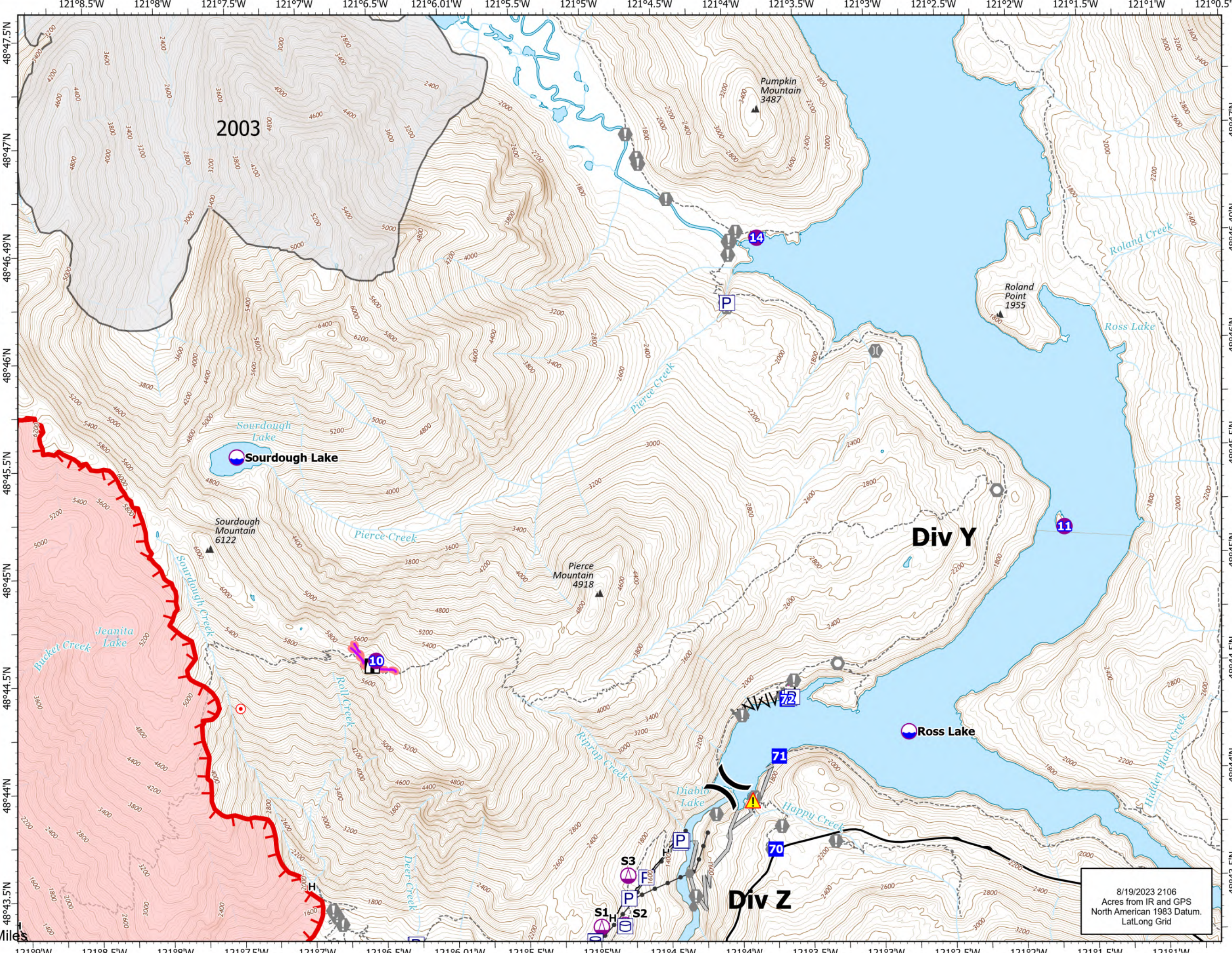
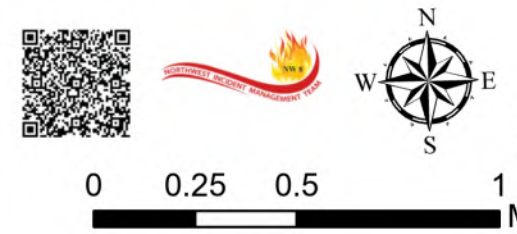
Operations

Sourdough
WA-NCP-000262
8/20/2023

5618 acres at 08/19/23 @1115



- Dip Site
- Helispot
- Sling Site
- Division Break
- Drop Point
- Lookout
- Hot Spot - Spot Fire
- Value at Risk
- Other
- Landmark
- Bridge
- Hazard
- Wildfire Daily Fire Perimeter
- Completed Fuel Break
- Completed Hand Line
- Planned Hand Line
- Access or Improved Road
- Other
- Retardant Drop
- Uncontained
- Historic Structure
- Transmission Lines
- Fire History
- Trail
- Mountain Peaks (ft)

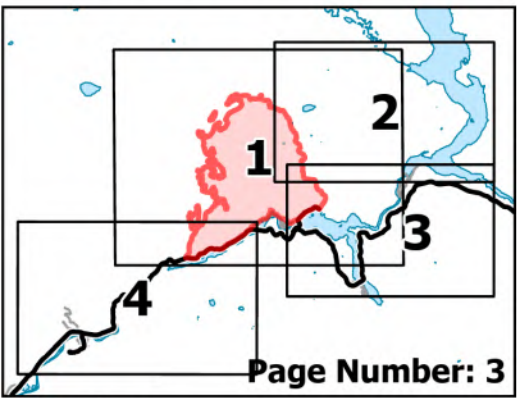


8/19/2023 2106
Acres from IR and GPS
North American 1983 Datum.
Lat/Long Grid

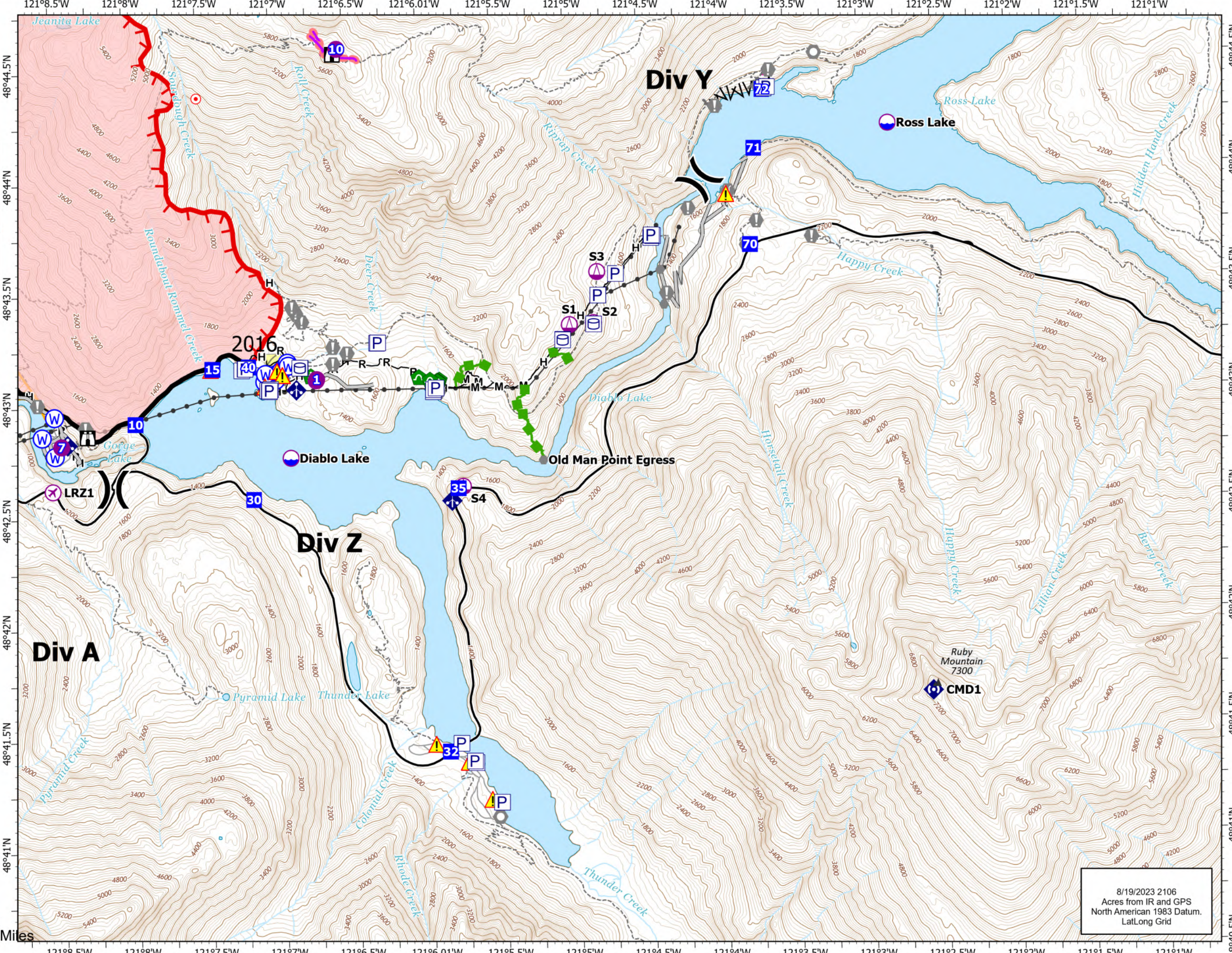
Operations

Sourdough
WA-NCP-000262
8/20/2023

5618 acres at 08/19/23 @1115



- Aerial Hazard
- UAS Launch and Recovery
- Dip Site
- Helispot
- Sling Site
- Division Break
- Drop Point
- Lookout
- Hot Spot - Spot Fire
- Value at Risk
- Other
- Landmark
- Gate
- Bridge
- Hazard Tree
- Culvert
- Mobile Weather Unit
- Repeater
- Hazard
- Water Source
- Wildfire Daily Fire Perimeter
- Completed Fuel Break
- Completed Hand Line
- Completed Mixed Construction Line
- Completed Road as Line
- Planned Hand Line
- Access or Improved Road
- Highlighted Feature
- Other
- Escape Route
- Retardant Drop
- Contained
- Uncontained
- Historic Structure
- Transmission Lines
- Fuels Treatments
- Fire History
- Seattle City Light Property
- Trail
- Mountain Peaks (ft)

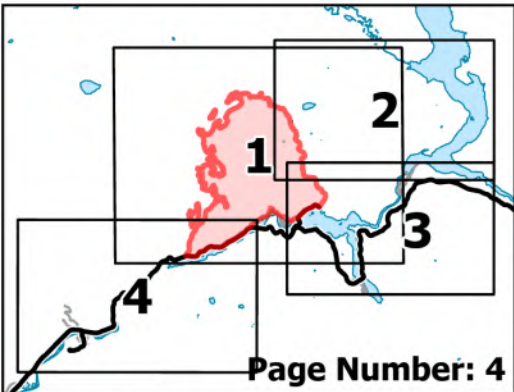


8/19/2023 2106
Acres from IR and GPS
North American 1983 Datum.
Lat/Long Grid

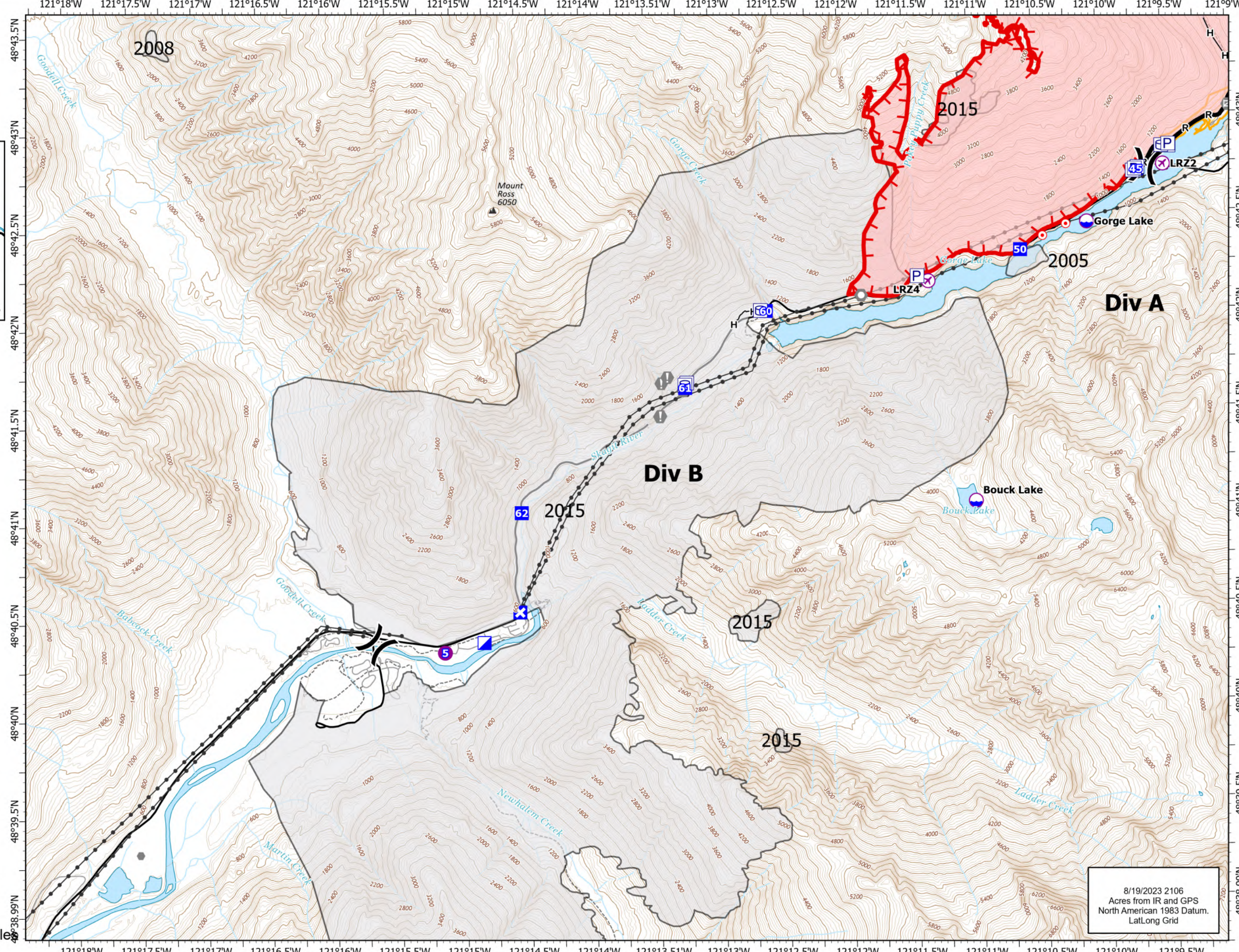
Operations

Sourdough
WA-NCP-000262
8/20/2023

5618 acres at 08/19/23 @1115



- UAS Launch and Recovery
- Dip Site
- Helispot
- Division Break
- Incident Command Post
- Drop Point
- Closure
- Hot Spot - Spot Fire
- Other
- Landmark
- Gate
- Wildfire Daily Fire Perimeter
- Completed Hand Line
- Completed Road as Line
- Contained
- Uncontained
- Historic Structure
- Transmission Lines
- Fire History
- Seattle City Light Property
- Trail
- Label_Lines
- Mountain Peaks (ft)



0 0.25 0.5 1 Mile

8/19/2023 2106
Acres from IR and GPS
North American 1983 Datum.
Lat/Long Grid