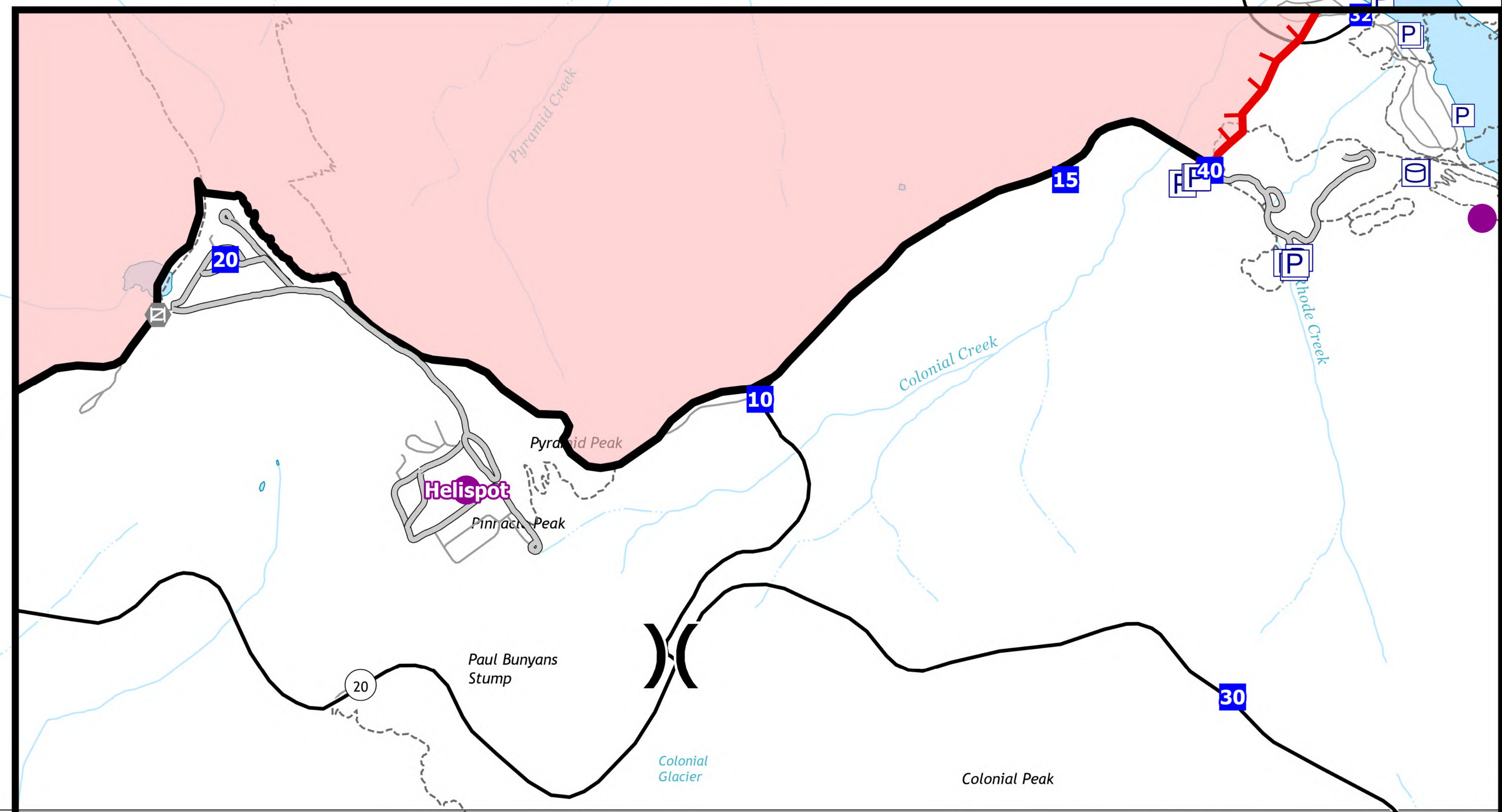
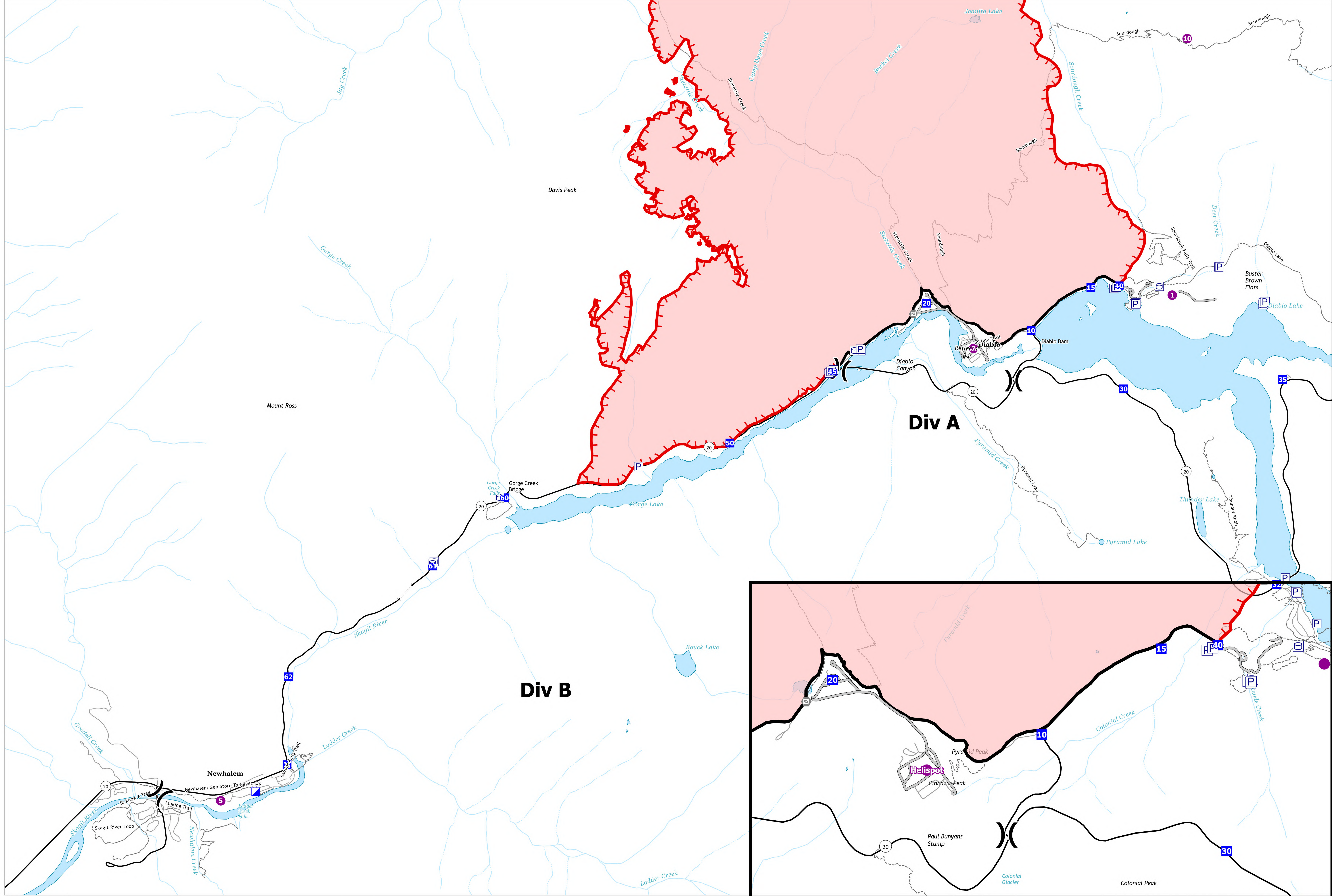


# Transportation



**Sourdough**  
**WA-NCP-000262**  
**8/20/2023**  
 5618 acres at 08/19/23 @1115

- Helispot
- Drop Point
- P Pump
- X Closure
- G Gate
- ICP Incident Command Post
- W Water Tank
- L Label Point
- Uncontained
- Paved Road
- Access or Improved Road
- Local Road
- | Tunnel
- )) Division Break
- | Contained
- Trail

North American 1983 Datum, Lat/Long Grid