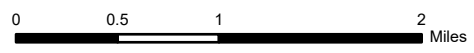


IAP
Main
Sourdough
WA-NCP-000262
8/24/2023
6000 acres at 08/23/23 @1500

- Other Property
- P Pump
- W Water Tank
- Helispot
- X Division Break
- Drop Point
- ▲ Completed Fuel Break
- H Completed Hand Line
- M Completed Mixed Construction Line
- R Completed Road as Line
- Access or Improved Road
- Highlighted Feature

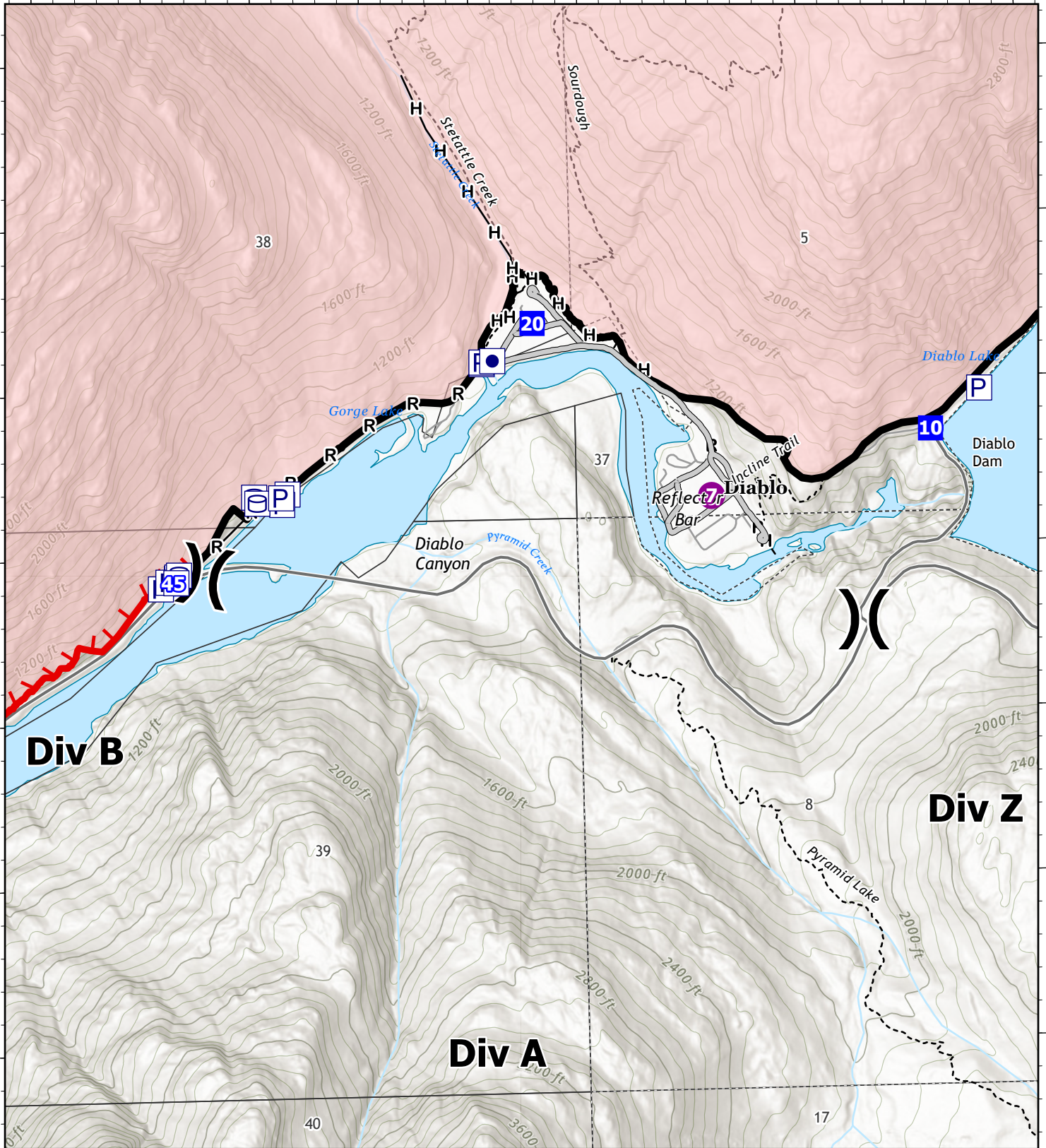
- Other
- Escape Route
- Retardant Drop
- Contained
- Uncontained
- - - Trail
- streams



North American Datum
 Lat/Long Grid

121°10'W

121°8'W





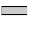




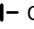


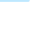
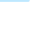

48°42'N

48°42'N

121°10'W

121°8'W

IAP
Div A
Sourdough
WA-NCP-000262
8/24/2023
6000 acres at 08/23/23 @1500

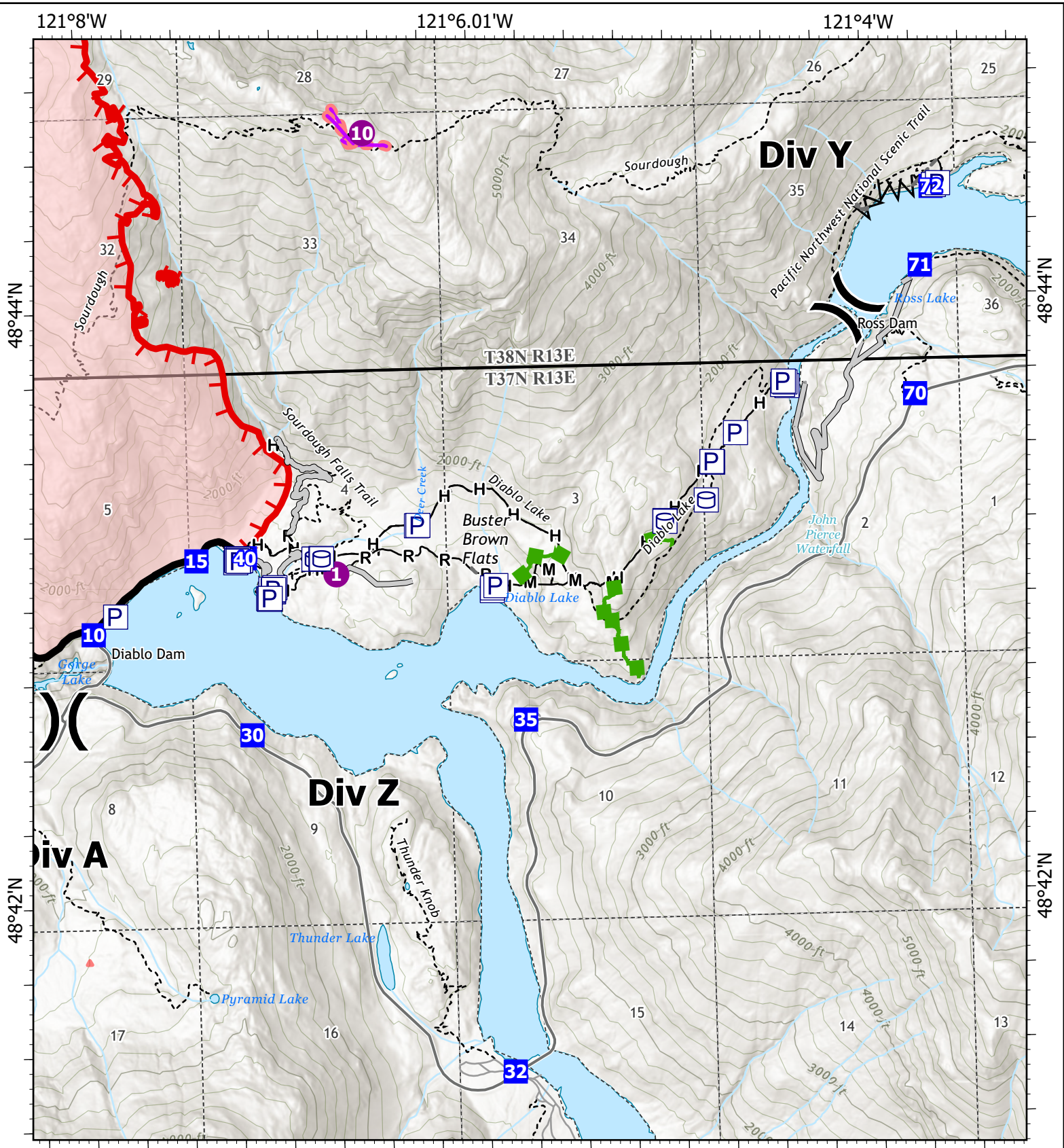
-  Other Property
-  Helispot
-  Access or Improved Road
-  Pump
-  Division Break
-  Contained
-  Water Tank
-  Drop Point
-  Uncontained
-  Completed Hand Line
-  Trail
-  streams
-  Completed Road as Line



0 0.13 0.25 0.5 Miles

North American Datum
 Lat/Long Grid

8/23/2023 2107
 Acres from IR and GPS

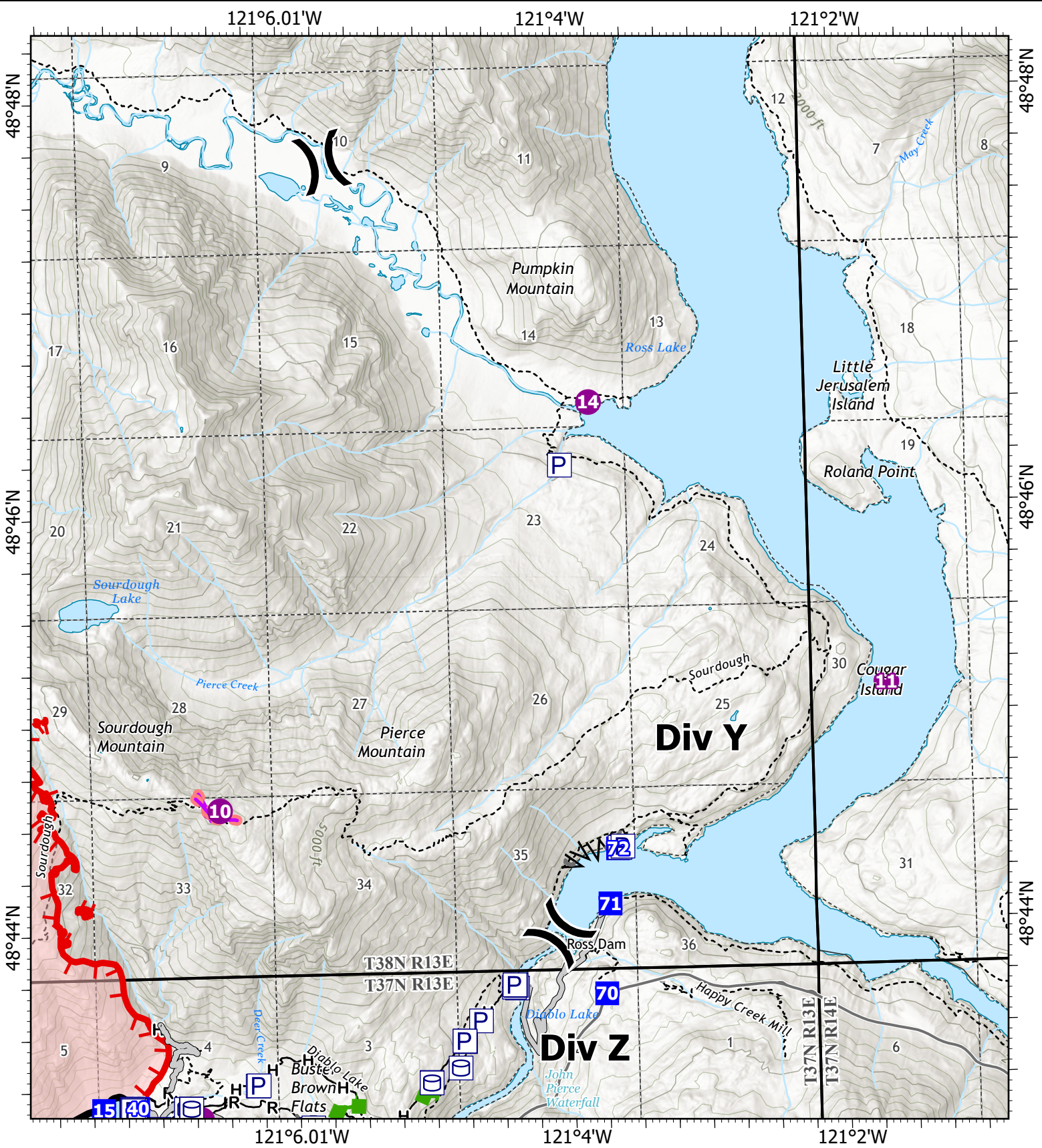


IAP
Div Z
Sourdough
WA-NCP-000262
8/24/2023
6000 acres at 08/23/23 @1500

- P Pump
- W Water Tank
- Helispot
- ⊗ Division Break
- Drop Point
- ▲ Completed Fuel Break
- H**- Completed Hand Line
- M**- Completed Mixed Construction Line
- R**- Completed Road as Line
- Access or Improved Road
- Highlighted Feature
- Other
- Escape Route

- Retardant Drop
- Contained
- Uncontained
- Trail
- streams



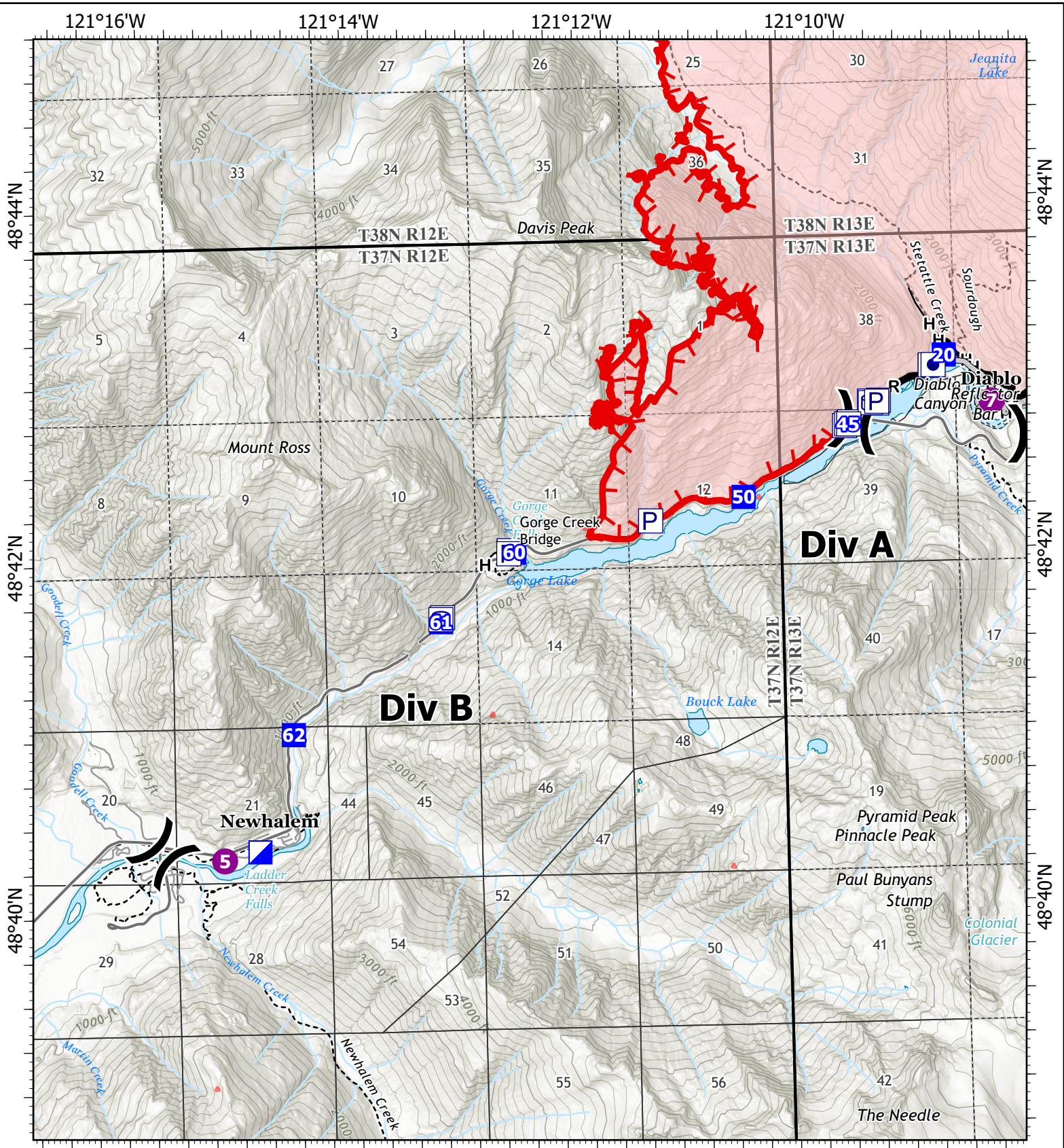


IAP
Div Y
Sourdough
WA-NCP-000262
8/24/2023
6000 acres at 08/23/23 @1500

- | | | |
|----------------|-----------------------------------|----------------|
| Pump | Completed Fuel Break | Escape Route |
| Water Tank | Completed Hand Line | Retardant Drop |
| Helispot | Completed Mixed Construction Line | Contained |
| Division Break | Completed Road as Line | Uncontained |
| Drop Point | Access or Improved Road | Trail |
| | Other | streams |

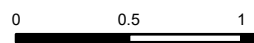


8/23/2023 2107
 Acres from IR and GPS



IAP
Div B
Sourdough
WA-NCP-000262
8/24/2023
6000 acres at 08/23/23 @1500

- | | | |
|----------------|------------------------|-------------------------|
| Other Property | Division Break | Access or Improved Road |
| Pump | Incident Command Post | Contained |
| Water Tank | Drop Point | Uncontained |
| Helispot | Completed Hand Line | Trail |
| | Completed Road as Line | streams |



2 North American Datum
 Miles/Lat/Long Grid

8/23/2023 2107
 Acres from IR and GPS