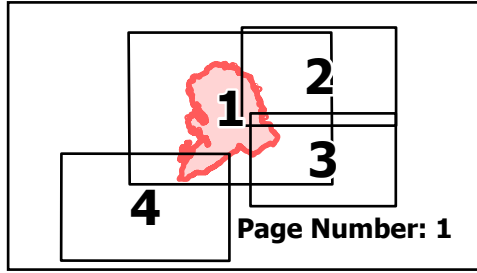


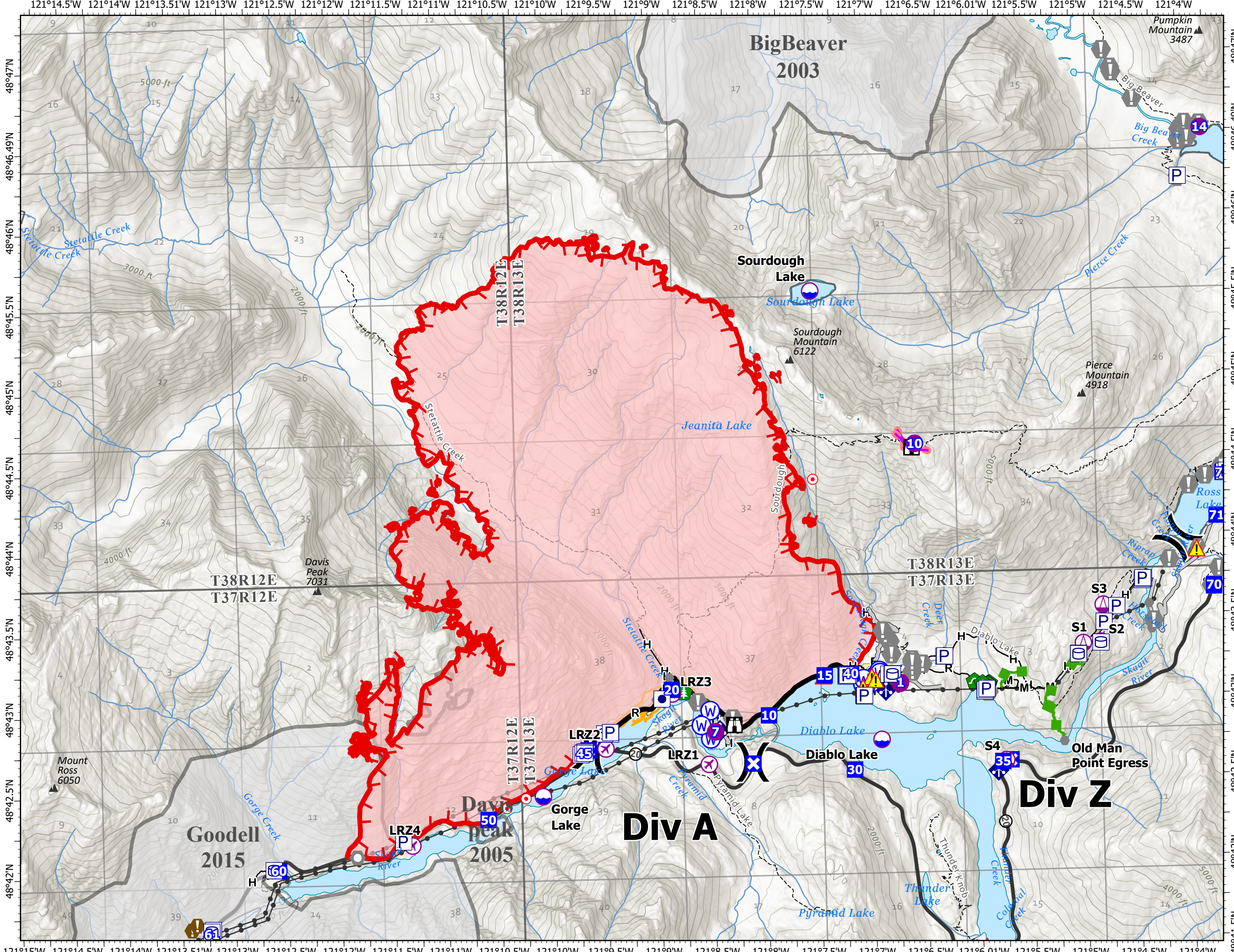
Operations

Sourdough
WA-NCP-000262
8/24/2023

6000 acres at 08/23/23 @1500



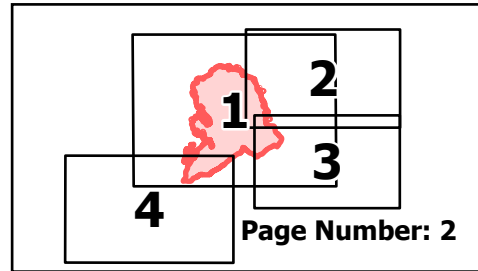
- Other Property
- Pump
- Water Tank
- Aerial Hazard
- UAS Launch and Recovery
- Dip Site
- Helispot
- Sling Site
- Division Break
- Drop Point
- Closure
- Lookout
- Hot Spot - Spot Fire
- Value at Risk
- Other
- Landmark
- Gate
- Bridge
- Hazard Tree
- Culvert
- Mobile Weather Unit
- Hazard
- Water Source
- Historic Structure
- Mountain Peaks (ft)
- Contained
- Uncontained
- Completed Fuel Break
- Completed Hand Line
- Completed Mixed Construction Line
- Completed Road as Line
- Access or Improved Road
- Other
- Escape Route
- Retardant Drop
- Transmission Lines
- Highways
- Roads
- Trails
- Fuels Treatments
- Fire History
- Seattle City Light Property



Operations

Sourdough
WA-NCP-000262
8/24/2023

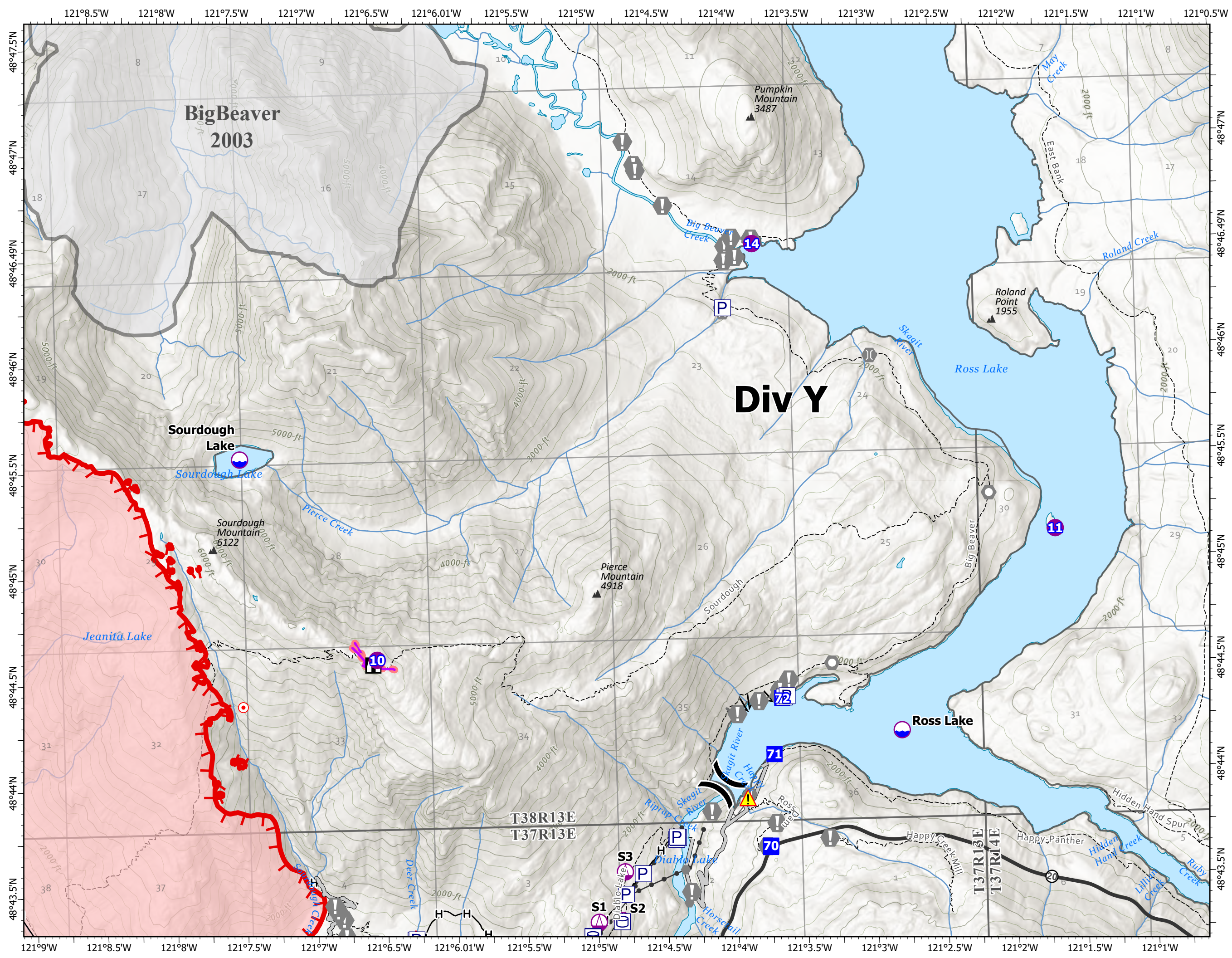
6000 acres at 08/23/23 @1500



- Pump
- Water Tank
- Dip Site
- Helispot
- Sling Site
- Division Break
- Drop Point
- Closure
- Lookout
- Hot Spot - Spot Fire
- Value at Risk
- Other
- Landmark
- Bridge
- Hazard
- Historic Structure
- Mountain Peaks (ft)
- Uncontained
- Completed Fuel Break
- Completed Hand Line
- Access or Improved Road
- Road
- Other
- Retardant Drop
- Transmission Lines
- Highways
- Roads
- Trails
- Fire History

North American 1983 Datum.
LatLong Grid

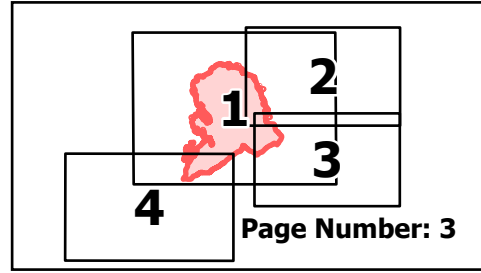
0 0.25 0.5 Miles



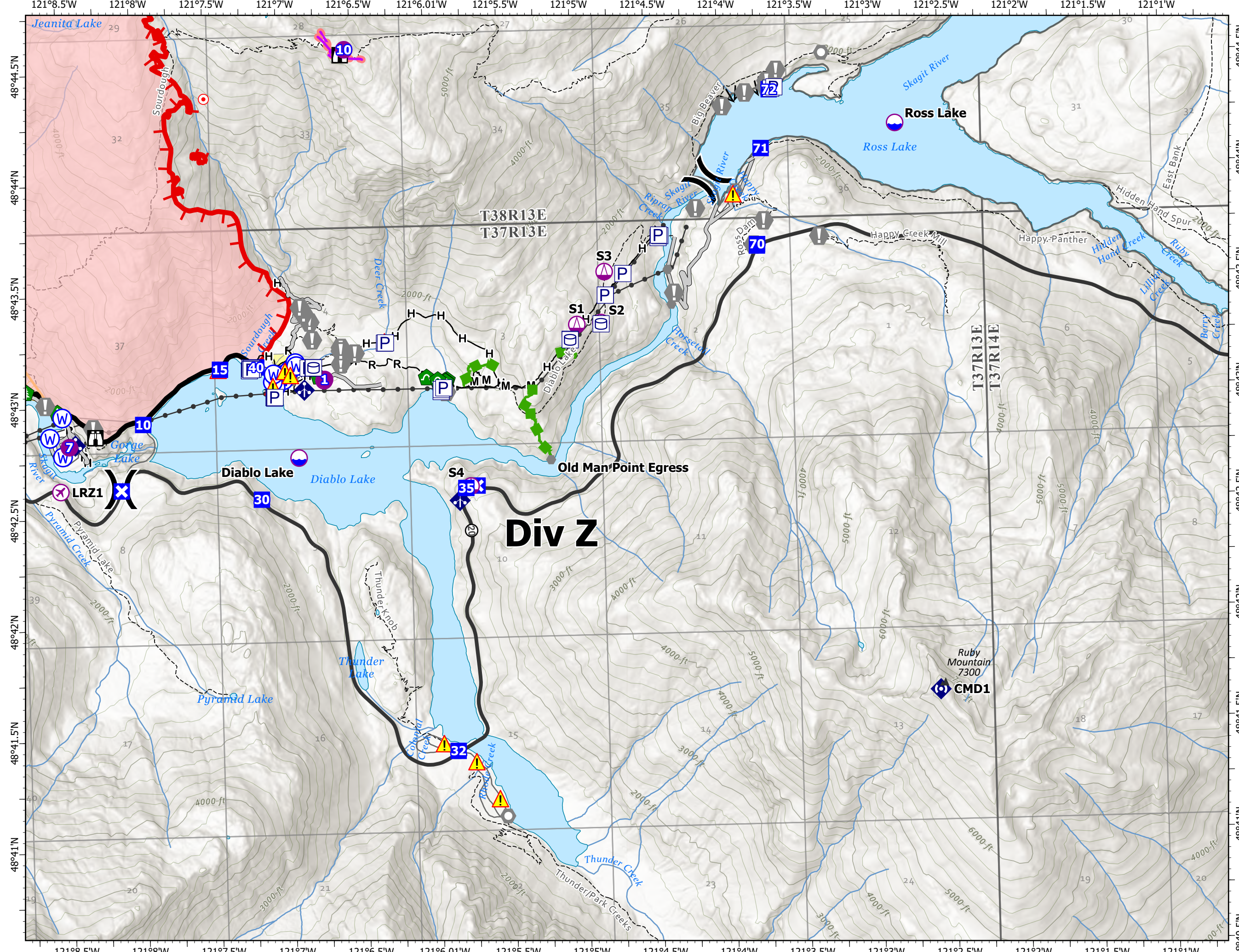
Operations

Sourdough
WA-NCP-000262
8/24/2023

6000 acres at 08/23/23 @1500



- Pump
- Water Tank
- Aerial Hazard
- UAS Launch and Recovery
- Dip Site
- Helispot
- Sling Site
- Division Break
- Drop Point
- Closure
- Lookout
- Hot Spot - Spot Fire
- Value at Risk
- Other
- Landmark
- Gate
- Bridge
- Hazard Tree
- Culvert
- Mobile Weather Unit
- Repeater
- Hazard
- Water Source
- Historic Structure
- Mountain Peaks (ft)
- Contained
- Uncontained
- Completed Fuel Break
- Completed Hand Line
- Completed Mixed Construction Line
- Completed Road as Line
- Access or Improved Road
- Other
- Escape Route
- Retardant Drop
- Transmission Lines
- Highways
- Roads
- Trails
- Fuels Treatments
- Seattle City Light Property



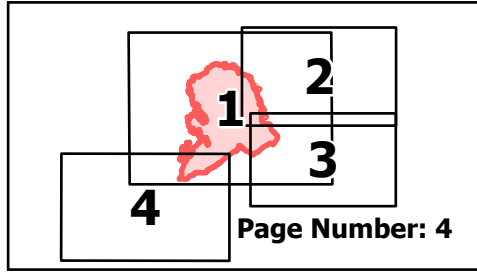
North American 1983 Datum.
LatLong Grid

0 0.25 0.5 Miles

Operations

Sourdough
WA-NCP-000262
8/24/2023

6000 acres at 08/23/23 @1500



- Other Property
- Pump
- Water Tank
- UAS Launch and Recovery
- Dip Site
- Helispot
- Division Break
- Incident Command Post
- Drop Point
- Closure
- Hot Spot - Spot Fire
- Other
- Landmark
- Gate
- Historic Structure
- Mountain Peaks (ft)
- Contained
- Uncontained
- Completed Hand Line
- Completed Road as Line
- Transmission Lines
- Highways
- Roads
- Trails
- Fire History
- Seattle City Light Property



North American 1983 Datum.
LatLong Grid

0 0.25 0.5 1 Miles

