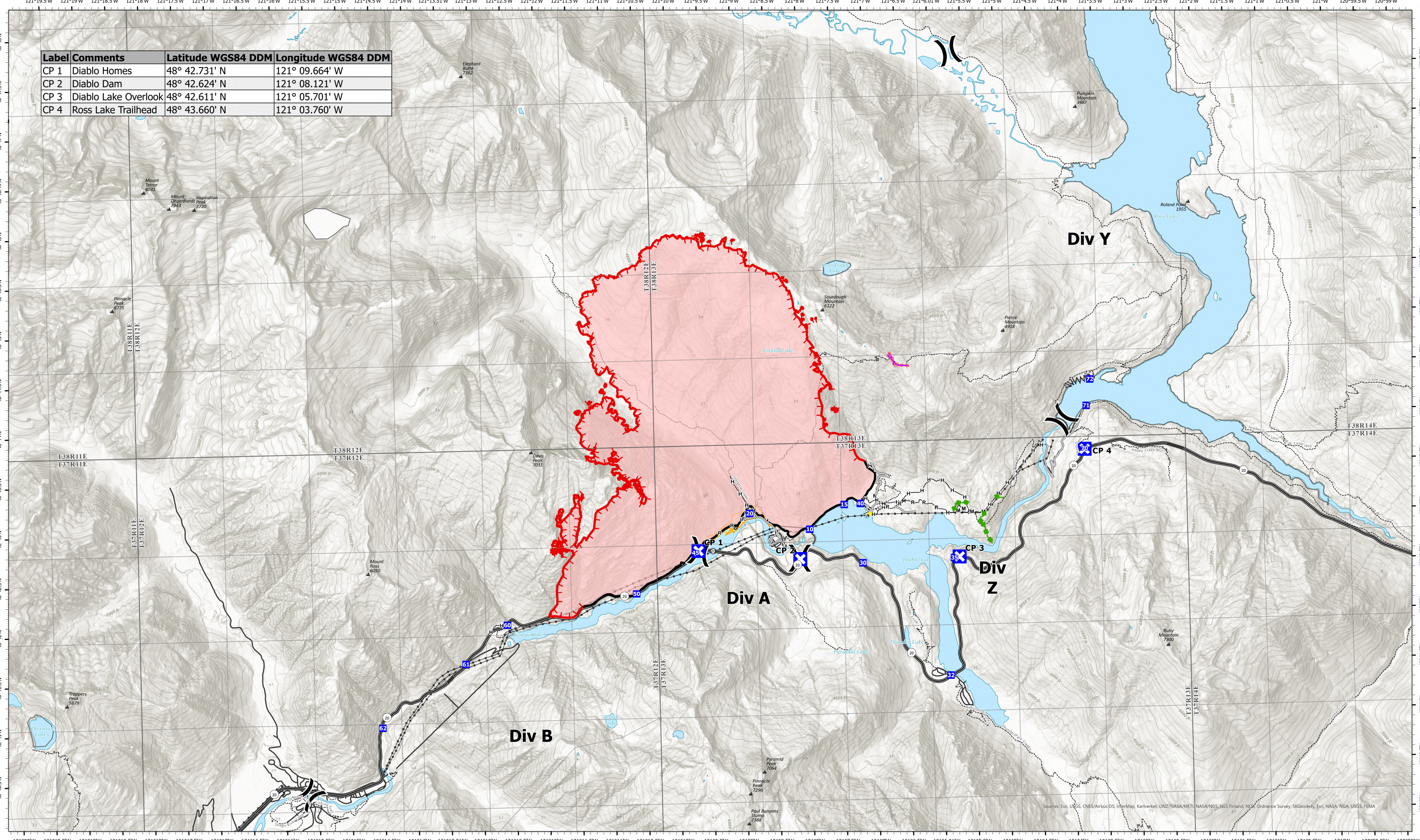


# Security

Label	Comments	Latitude WGS84 DDM	Longitude WGS84 DDM
CP 1	Diablo Homes	48° 42.731' N	121° 09.664' W
CP 2	Diablo Dam	48° 42.624' N	121° 08.121' W
CP 3	Diablo Lake Overlook	48° 42.611' N	121° 05.701' W
CP 4	Ross Lake Trailhead	48° 43.660' N	121° 03.760' W



**Sourdough**  
**WA-NCP-000262**  
**8/24/2023**

6000 acres at 08/23/23 @1500

- (X) Division Break
- Drop Point
- ⊠ Closure
- Contained
- Uncontained
- M Completed Fuel Break
- R Completed Hand Line
- Completed Mixed Construction Line
- Completed Road as Line
- Access or Improved Road
- Highlighted Feature
- Other
- Escape Route
- Retardant Drop
- Seattle City Light Property
- Transmission Lines
- Highways
- Roads






8/24/2023 1528  
Acres from IR and GPS

