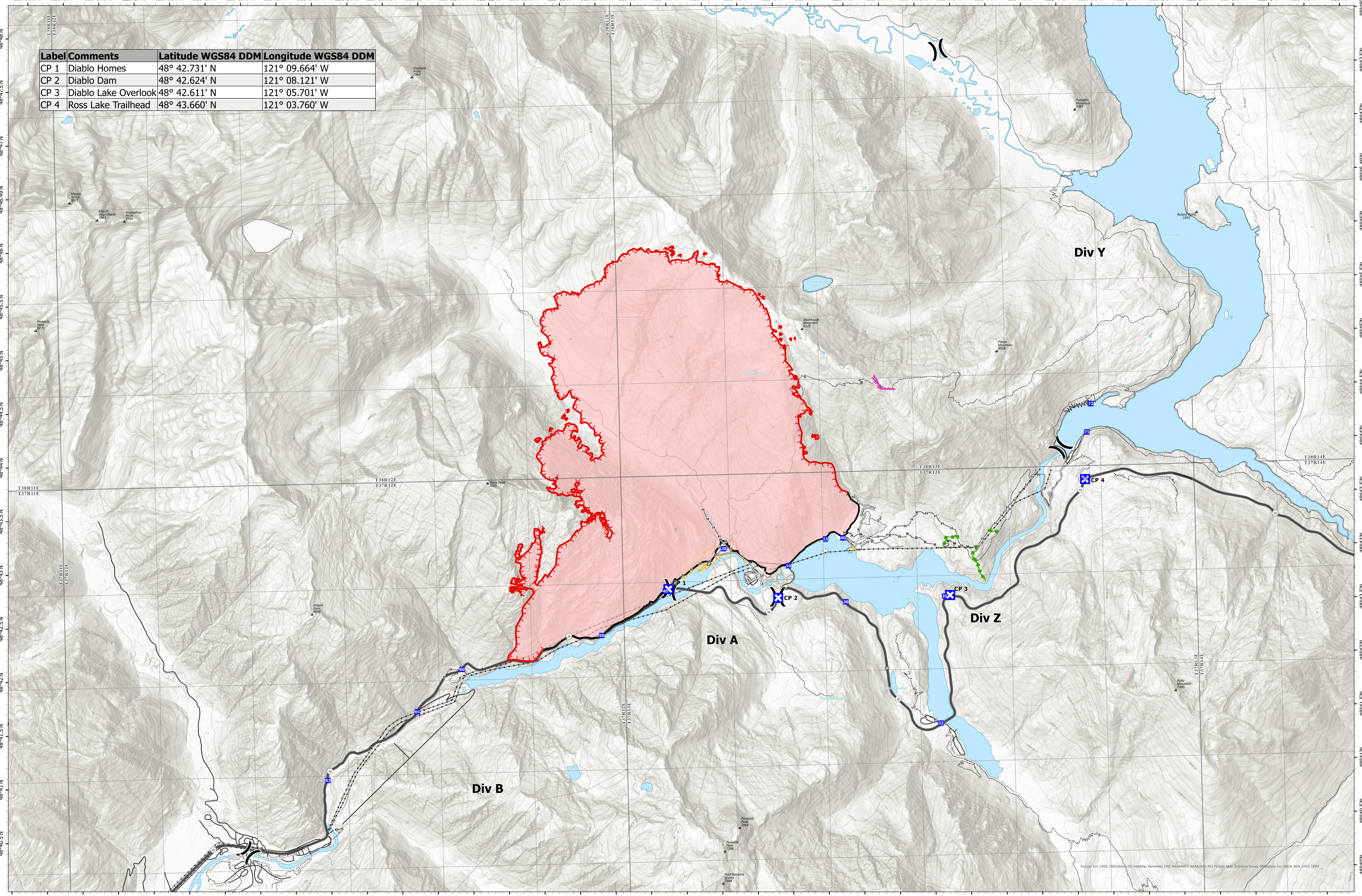


# Security

| Label | Comments             | Latitude WGS84 DDM | Longitude WGS84 DDM |
|-------|----------------------|--------------------|---------------------|
| CP 1  | Diablo Homes         | 48° 42.731' N      | 121° 09.664' W      |
| CP 2  | Diablo Dam           | 48° 42.624' N      | 121° 08.121' W      |
| CP 3  | Diablo Lake Overlook | 48° 42.611' N      | 121° 05.701' W      |
| CP 4  | Ross Lake Trailhead  | 48° 43.660' N      | 121° 03.760' W      |



**Sourdough**  
**WA-NCP-000262**  
**8/24/2023**

6000 acres at 08/23/23 @1500

- Uncontained
- Completed Fuel Break
- Completed Hand Line
- Completed Mixed Construction Line
- Completed Road as Line
- Access or Improved Road
- Highlighted Feature
- Other
- Escape Route
- Retardant Drop
- Seattle City Light Property
- Transmission Lines
- Highways
- Drop Point
- Closure
- Division Break
- Roads



8/24/2023 1503  
 Acres from IR and GPS

