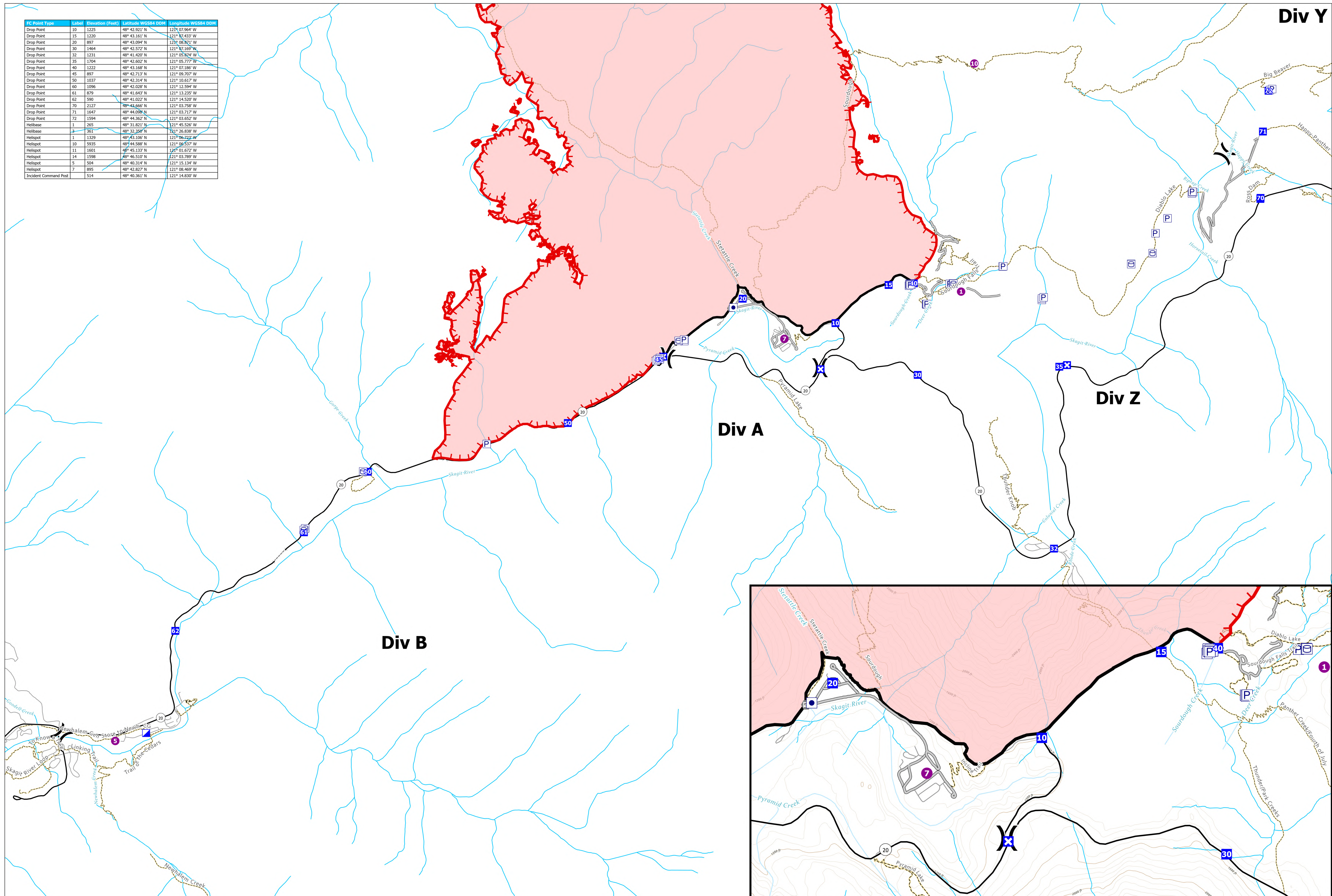


Transportation

IC Point Type	Label	Elevation (Feet)	Latitude WGS84 DDM	Longitude WGS84 DDM
Drop Point	10	1225	48° 42.921' N	121° 07.964' W
Drop Point	15	1220	48° 43.161' N	121° 07.433' W
Drop Point	20	897	48° 43.094' N	121° 08.821' W
Drop Point	30	1464	48° 42.572' N	121° 07.169' W
Drop Point	32	1231	48° 41.430' N	121° 05.874' W
Drop Point	35	1704	48° 42.602' N	121° 05.777' W
Drop Point	40	1222	48° 43.168' N	121° 07.186' W
Drop Point	45	897	48° 42.713' N	121° 09.707' W
Drop Point	50	1037	48° 42.314' N	121° 10.617' W
Drop Point	60	1096	48° 42.028' N	121° 12.594' W
Drop Point	61	879	48° 41.643' N	121° 13.235' W
Drop Point	62	590	48° 41.022' N	121° 14.520' W
Drop Point	70	2127	48° 44.666' N	121° 03.738' W
Drop Point	71	1647	48° 44.098' N	121° 03.717' W
Drop Point	72	1594	48° 44.362' N	121° 03.652' W
Helibase	1	265	48° 31.821' N	121° 45.526' W
Helibase	3	361	48° 32.350' N	121° 26.838' W
Helispot	1	1329	48° 43.106' N	121° 06.722' W
Helispot	10	5935	48° 44.588' N	121° 08.537' W
Helispot	11	1601	48° 45.133' N	121° 01.672' W
Helispot	14	1598	48° 46.510' N	121° 03.789' W
Helispot	5	504	48° 40.314' N	121° 15.134' W
Helispot	7	895	48° 42.827' N	121° 08.469' W
Incident Command Post	514		48° 40.361' N	121° 14.830' W

Div Y



Sourdough
WA-NCP-000262
8/24/2023
 6000 acres at 08/23/23 @1500

- Helispot
- ⊠ Closure
- ⊠ Water Tank
- Trails
- Paved Road
- X Division Break
- ⊠ Gate
- Access or Improved Road
- Paved Road
- ⊠ Incident Command Post
- ⊠ Other Property
- Contained
- Local Road
- Drop Point
- ⊠ Pump
- Uncontained
- Tunnel

North American 1983 Datum, Lat/Long Grid

0 0.28 0.55 1.1 Miles

8/23/2023 2124
 Acres from IR and GPS