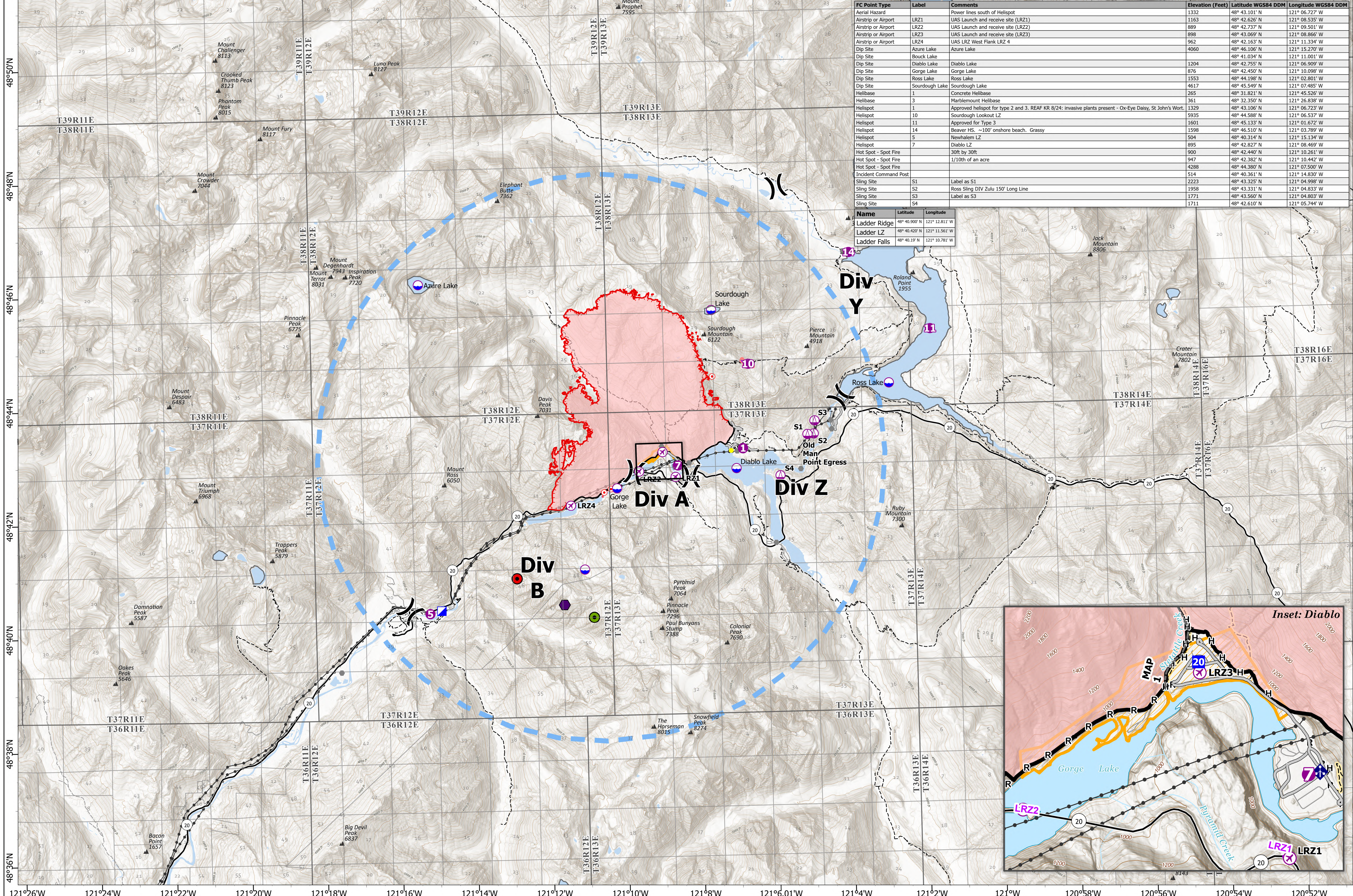
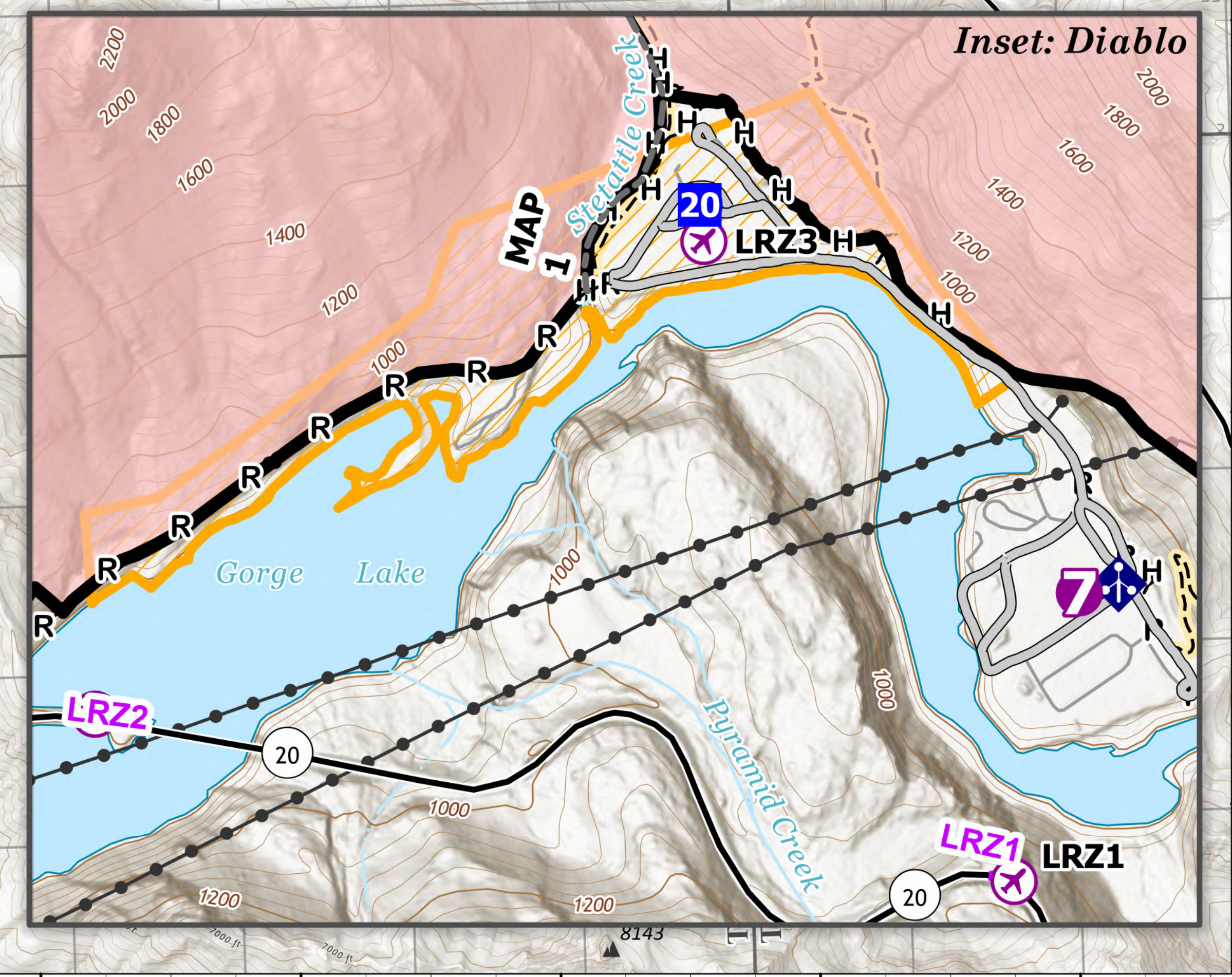


# Air Operations

121°24'W 121°22'W 121°20'W 121°18'W 121°16'W 121°14'W 121°12'W 121°10'W 121°8'W 121°6.01'W 121°4'W 121°2'W 121°0'W 120°58'W 120°56'W 120°54'W 120°52'W



Name	Latitude	Longitude
Ladder Ridge	48° 40.900' N	121° 12.811' W
Ladder LZ	48° 40.420' N	121° 11.561' W
Ladder Falls	48° 40.19' N	121° 10.781' W



Sourdough  
WA-NCP-000262  
8/27/2023

6138 acres at 08/24/23 @2126

- Aerial Hazard
- Incident Command Post
- Retardant Drop
- Ladder Falls
- UAS Launch and Recovery
- Hot Spot - Spot Fire
- Temporary Flight Restriction
- Ladder Ridge
- Dip Site
- Other
- Contained
- Ladder LZ
- Helispot
- Access or Improved Road
- Uncontained
- Highlighted Feature
- NOCA Trails
- Other
- Transmission Lines
- x Division Break
- Other
- Other

8/26/2023 2000  
Acres from IR and GPS  
North American 1983 Datum. Lat/Long Grid

0 0.5 1 2 3 Miles