

IAP
Main
Sourdough
WA-NCP-000262
8/27/2023
 6138 acres at 08/24/23 @2126

- Other Property
- ⊠ Pump
- ⊠ Water Tank
- ⊠ Helispot
- ⊠ Division Break
- Drop Point
- ⊠ Completed Fuel Break
- H- Completed Hand Line
- M- Completed Mixed Construction Line
- R- Completed Road as Line
- Access or Improved Road
- Highlighted Feature
- Other
- Escape Route
- Retardant Drop
- Contained
- Uncontained
- Local Connector
- Local Road
- Tunnel
- Trail



0 0.5 1 2 Miles
 North American Datum
 Lat/Long Grid

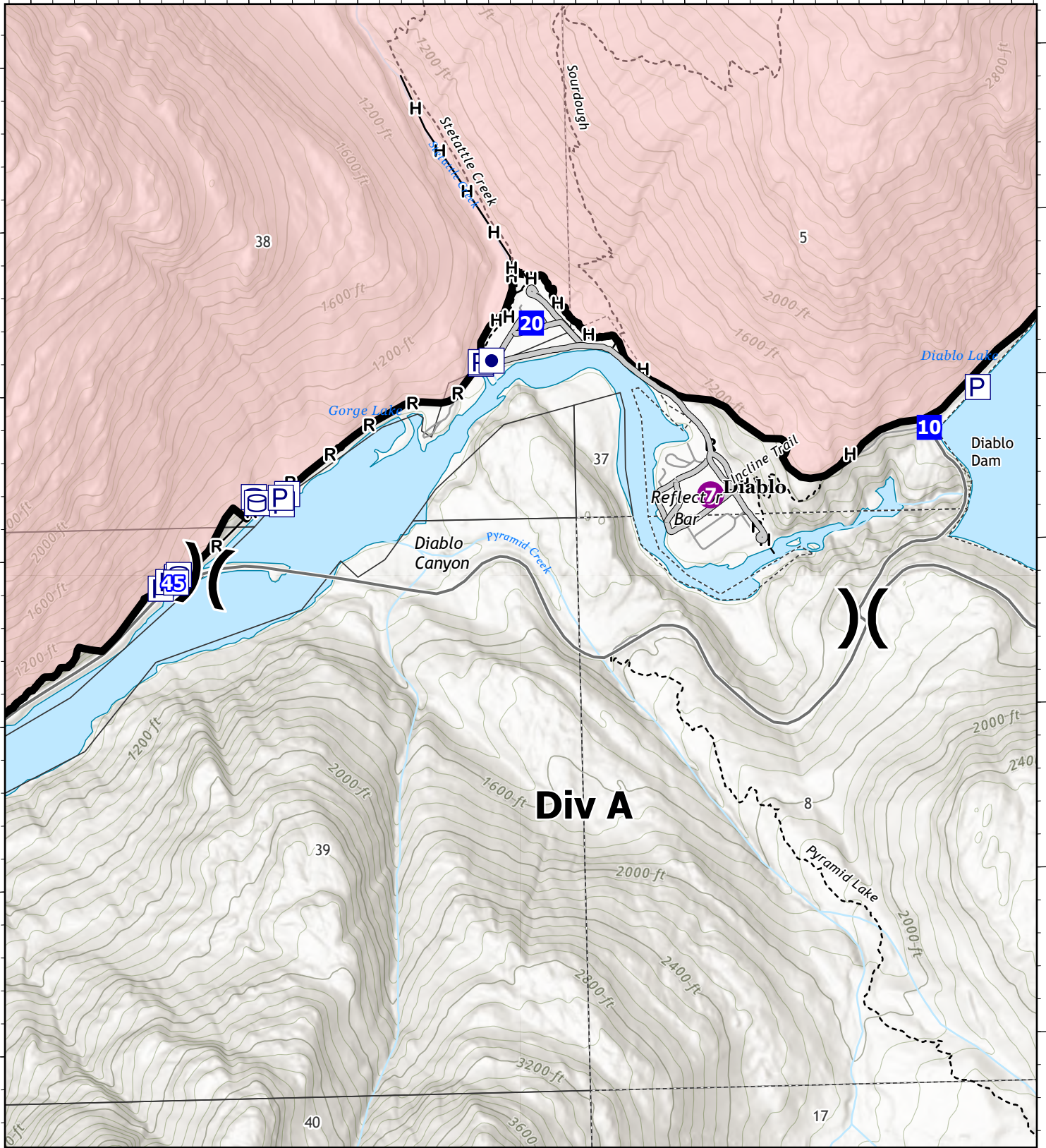
8/26/2023 1957
 Acres from IR and GPS

121°10'W

121°8'W

48°42'N

48°42'N



Div A

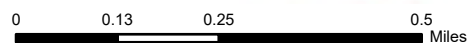
121°10'W

121°8'W

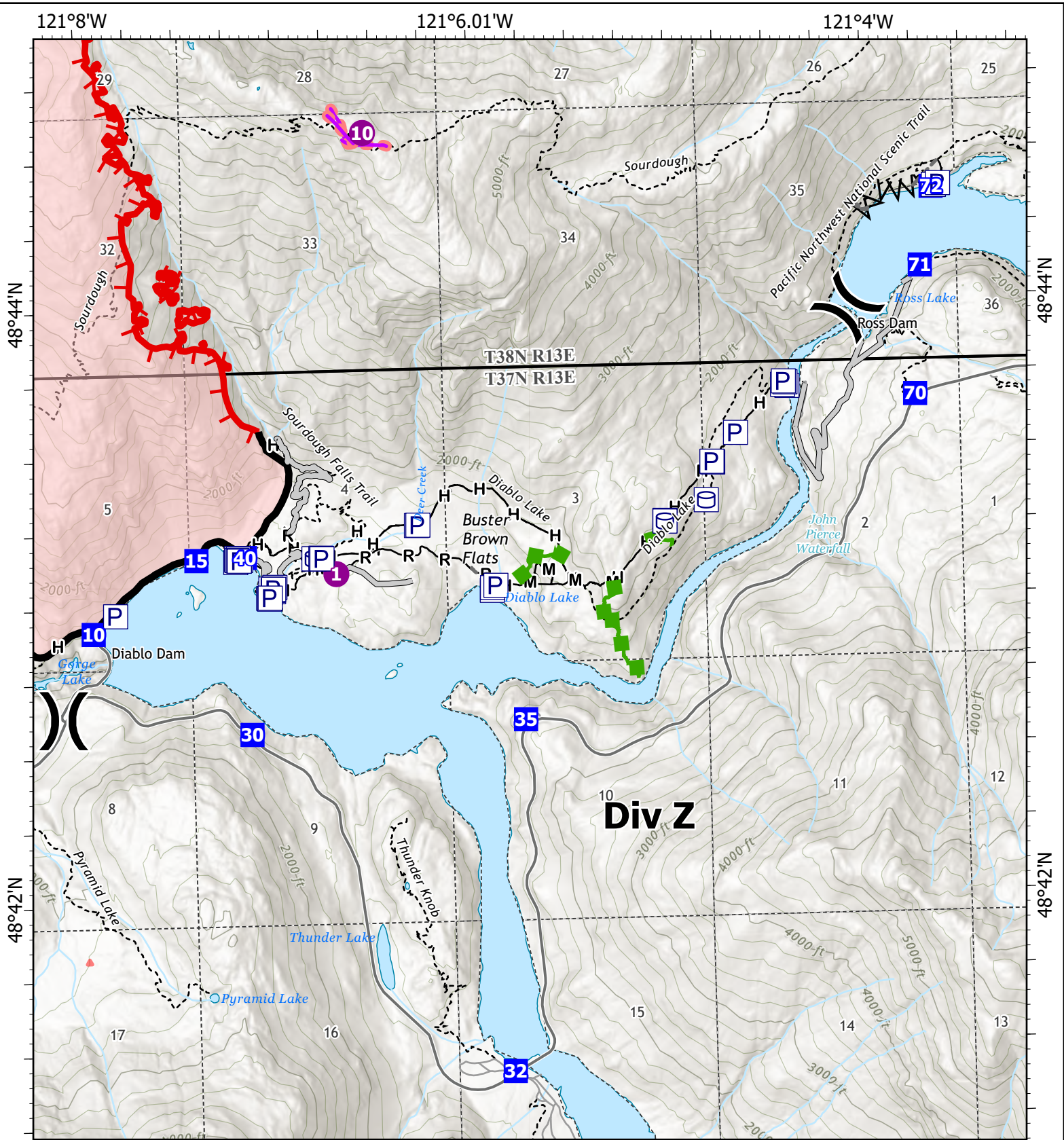
IAP
Div A
Sourdough
WA-NCP-000262
8/27/2023
 6138 acres at 08/24/23 @2126

- Other Property
- Pump
- Water Tank
- Helispot
- ⌘ Division Break
- Drop Point
- H- Completed Hand Line
- R- Completed Road as Line
- Access or Improved Road
- Contained
- Local Connector
- Local Road
- - - Trail

8/26/2023 1957
 Acres from IR and GPS



North American Datum
 Lat/Long Grid



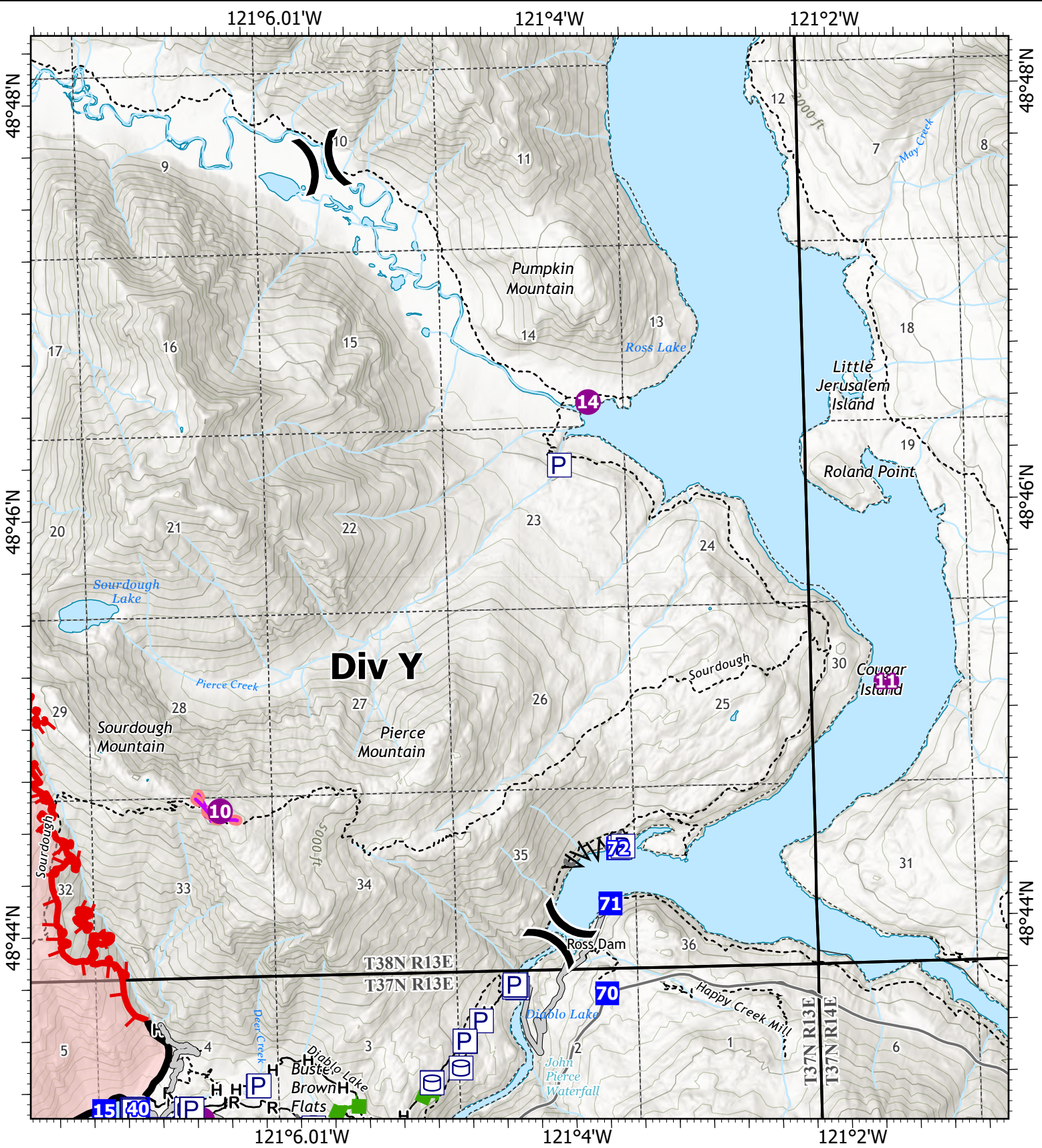
IAP
Div Z
Sourdough
WA-NCP-000262
8/27/2023
6138 acres at 08/24/23 @2126

- Pump
- Water Tank
- Helispot
- Division Break
- Drop Point
- Completed Fuel Break
- Completed Hand Line
- Completed Mixed Construction Line
- Completed Road as Line
- Access or Improved Road
- Highlighted Feature
- Other
- Escape Route
- Retardant Drop
- Contained
- Uncontained
- Local Connector
- Local Road
- Trail



0 0.28 0.55 1.1 Miles
 North American Datum Lat/Long Grid

8/26/2023 1957
 Acres from IR and GPS



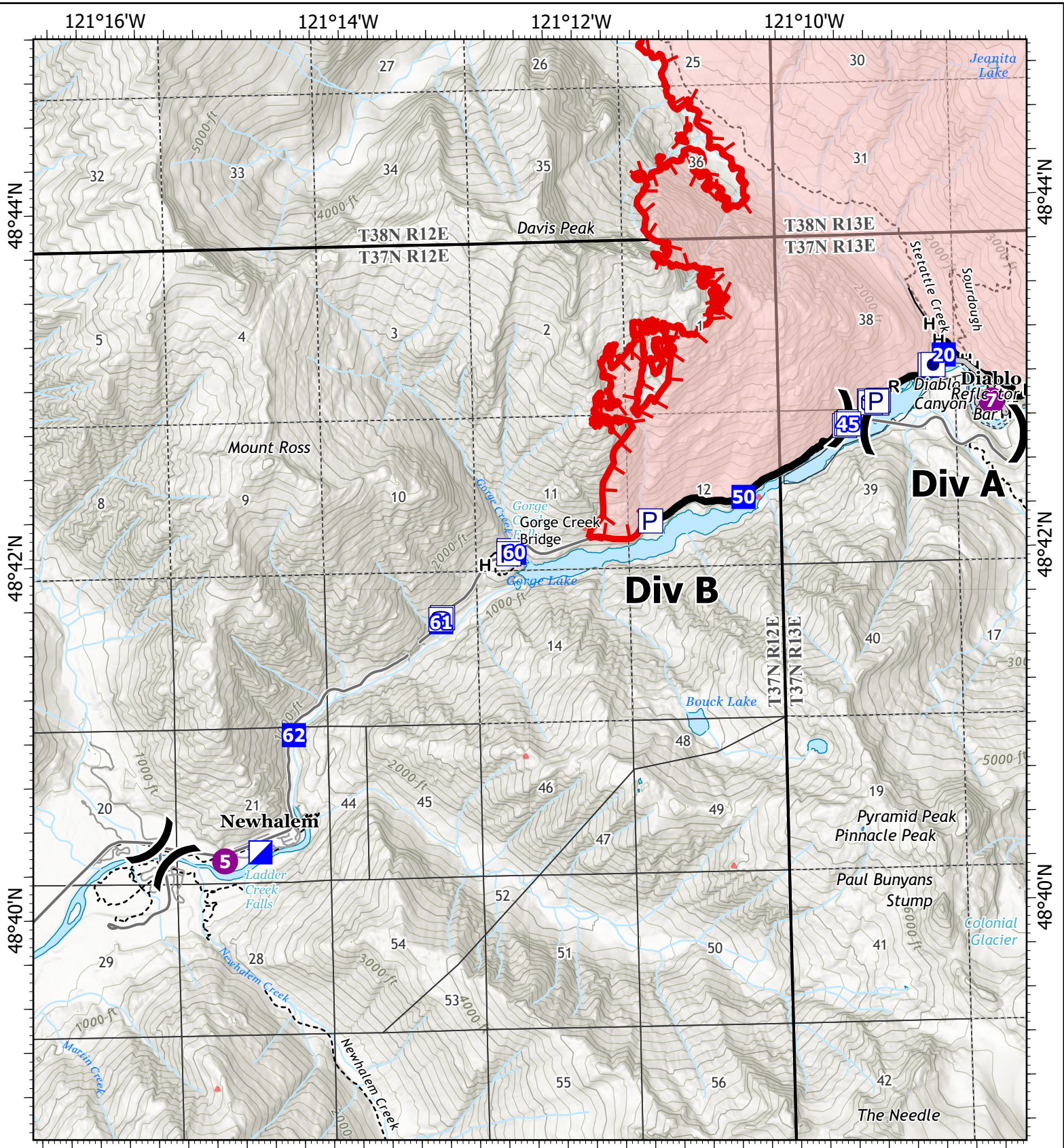
IAP
Div Y
Sourdough
WA-NCP-000262
8/27/2023
6138 acres at 08/24/23 @2126

- P Pump
- W Water Tank
- Helispot
- Division Break
- Drop Point
- Completed Fuel Break
- Completed Hand Line
- Completed Mixed Construction Line
- Completed Road as Line
- Access or Improved Road
- Other
- Escape Route
- Retardant Drop
- Contained
- Uncontained
- Local Connector
- Local Road
- Trail



8/26/2023 1957
 Acres from IR and GPS

0 0.4 0.8 1.6 North American Datum
 Miles Lat/Long Grid



IAP
Div B
Sourdough
WA-NCP-000262
8/27/2023
 6138 acres at 08/24/23 @2126

- Other Property
- P Pump
- W Water Tank
- Helispot
- Division Break
- Incident Command Post
- Drop Point
- H**— Completed Hand Line
- R**— Completed Road as Line
- Access or Improved Road
- Contained
- Uncontained
- Local Connector
- Local Road
- Tunnel
- Trail

