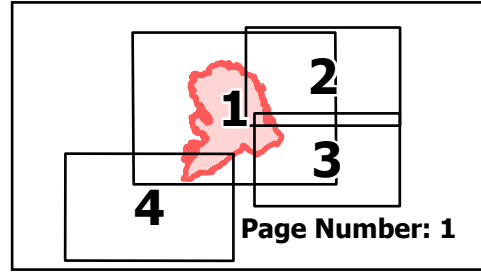


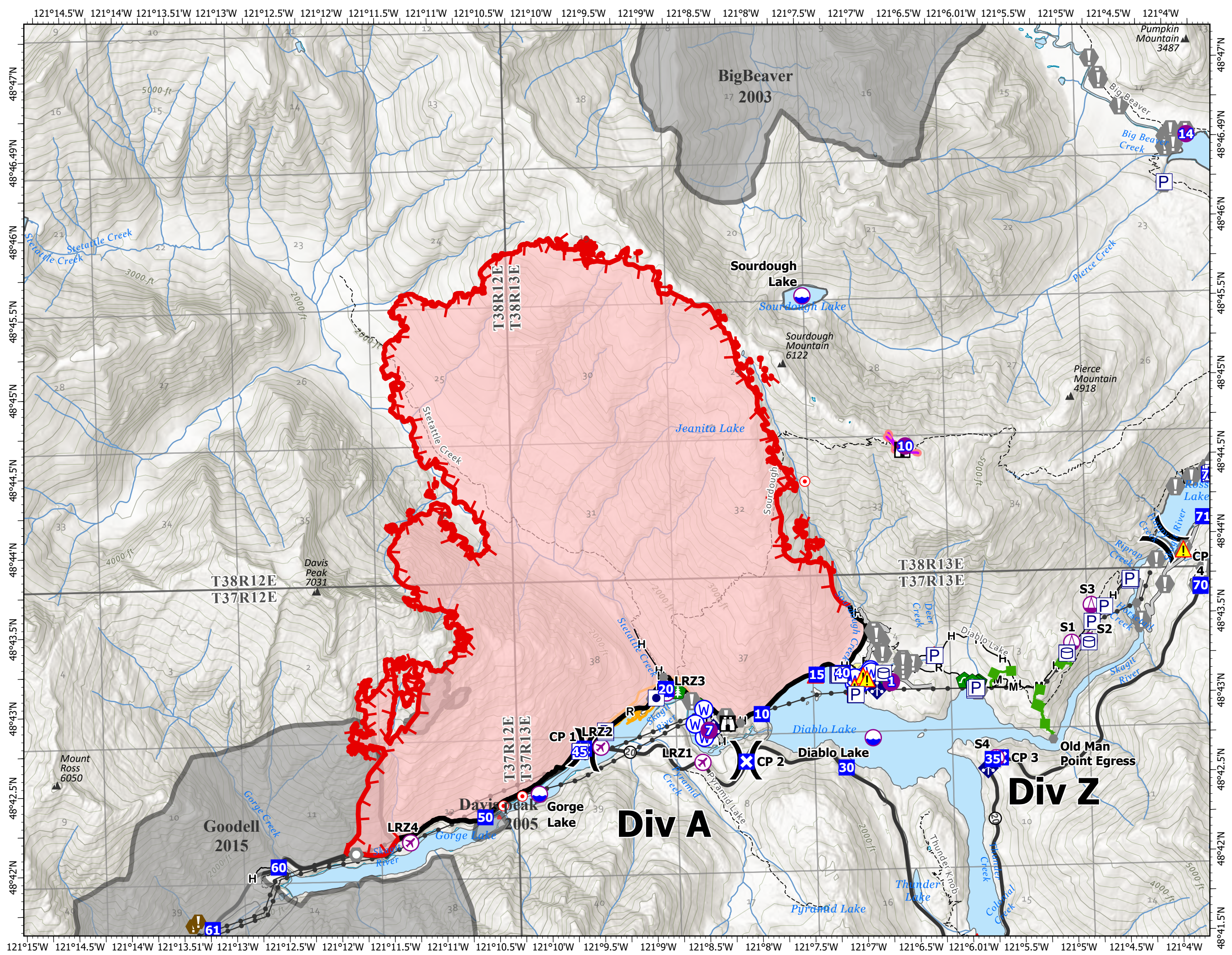
Operations

Sourdough
WA-NCP-000262
8/27/2023

6138 acres at 08/24/23 @2126



- | | |
|-------------------------|-----------------------------------|
| Other Property | Historic Structure |
| Pump | Mountain Peaks (ft) |
| Water Tank | Contained |
| Aerial Hazard | Uncontained |
| UAS Launch and Recovery | Completed Fuel Break |
| Dip Site | Completed Hand Line |
| Helispot | Completed Mixed Construction Line |
| Sling Site | Completed Road as Line |
| Division Break | Access or Improved Road |
| Drop Point | Other Road |
| Closure | Highlighted Feature |
| Lookout | Other |
| Hot Spot - Spot Fire | Escape Route |
| Value at Risk | Retardant Drop |
| Other | Transmission Lines |
| Landmark | Highways |
| Gate | Roads |
| Bridge | Trails |
| Hazard Tree | Fuels Treatments |
| Culvert | Fire History |
| Mobile Weather Unit | Seattle City Light Property |
| Hazard | |
| Water Source | |



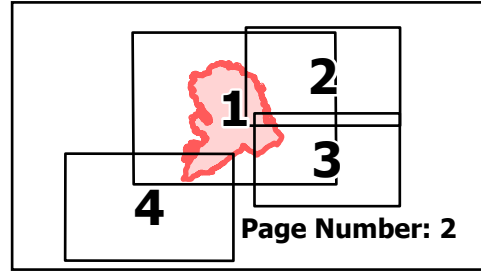
North American 1983 Datum.
Lat/Long Grid

0 0.25 0.5 1 Miles

Operations

Sourdough
WA-NCP-000262
8/27/2023

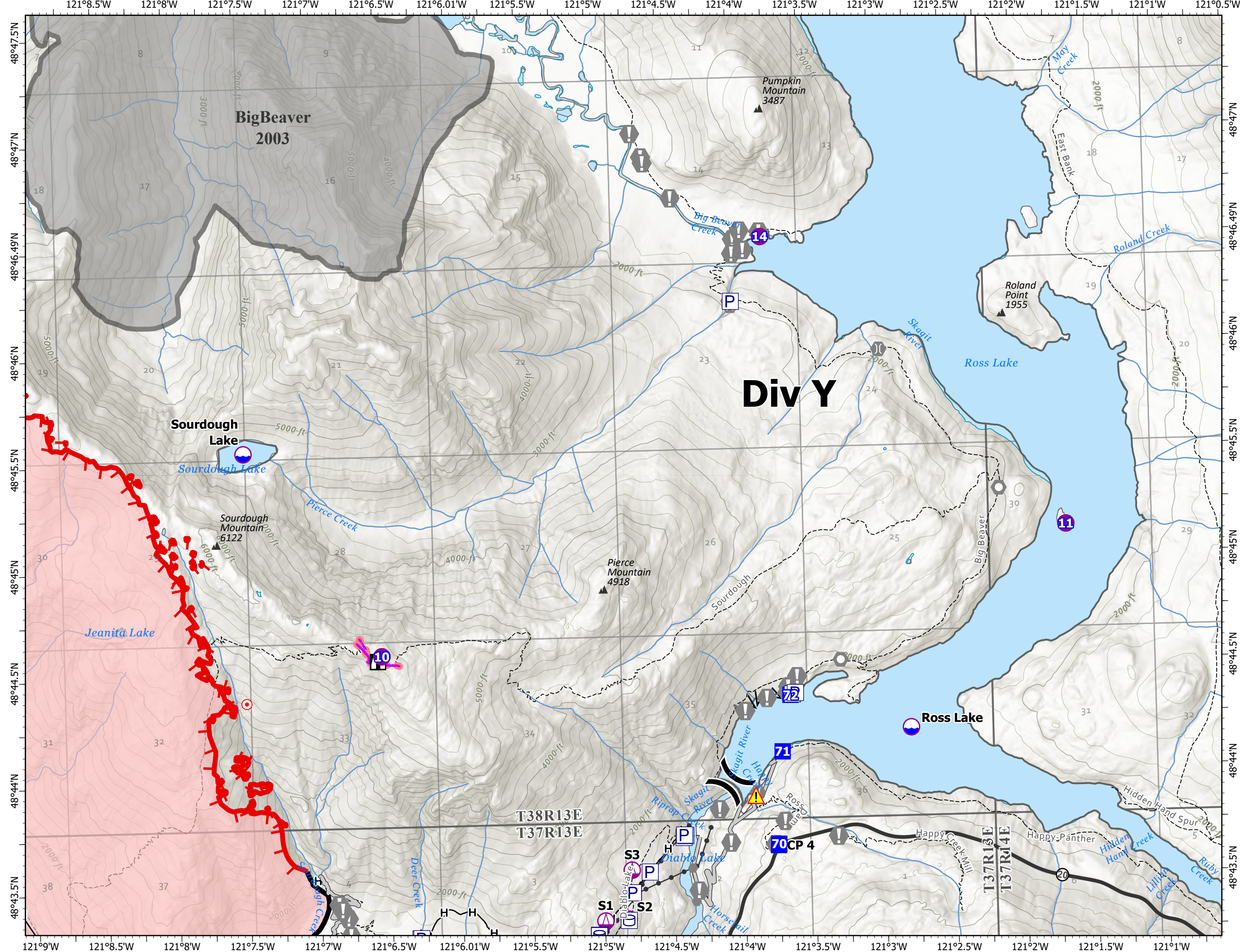
6138 acres at 08/24/23 @2126



- Pump
- Water Tank
- Dip Site
- Helispot
- Sling Site
- Division Break
- Drop Point
- Closure
- Lookout
- Hot Spot - Spot Fire
- Value at Risk
- Other
- Landmark
- Bridge
- Hazard
- Historic Structure
- Mountain Peaks (ft)
- Contained
- Uncontained
- Completed Fuel Break
- Completed Hand Line
- Access or Improved Road
- Other
- Retardant Drop
- Transmission Lines
- Highways
- Roads
- Trails
- Fire History

North American 1983 Datum.
Lat/Long Grid

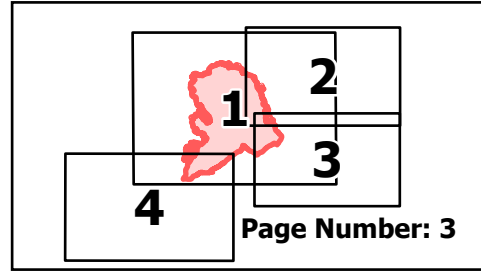
0 0.25 0.5 Miles



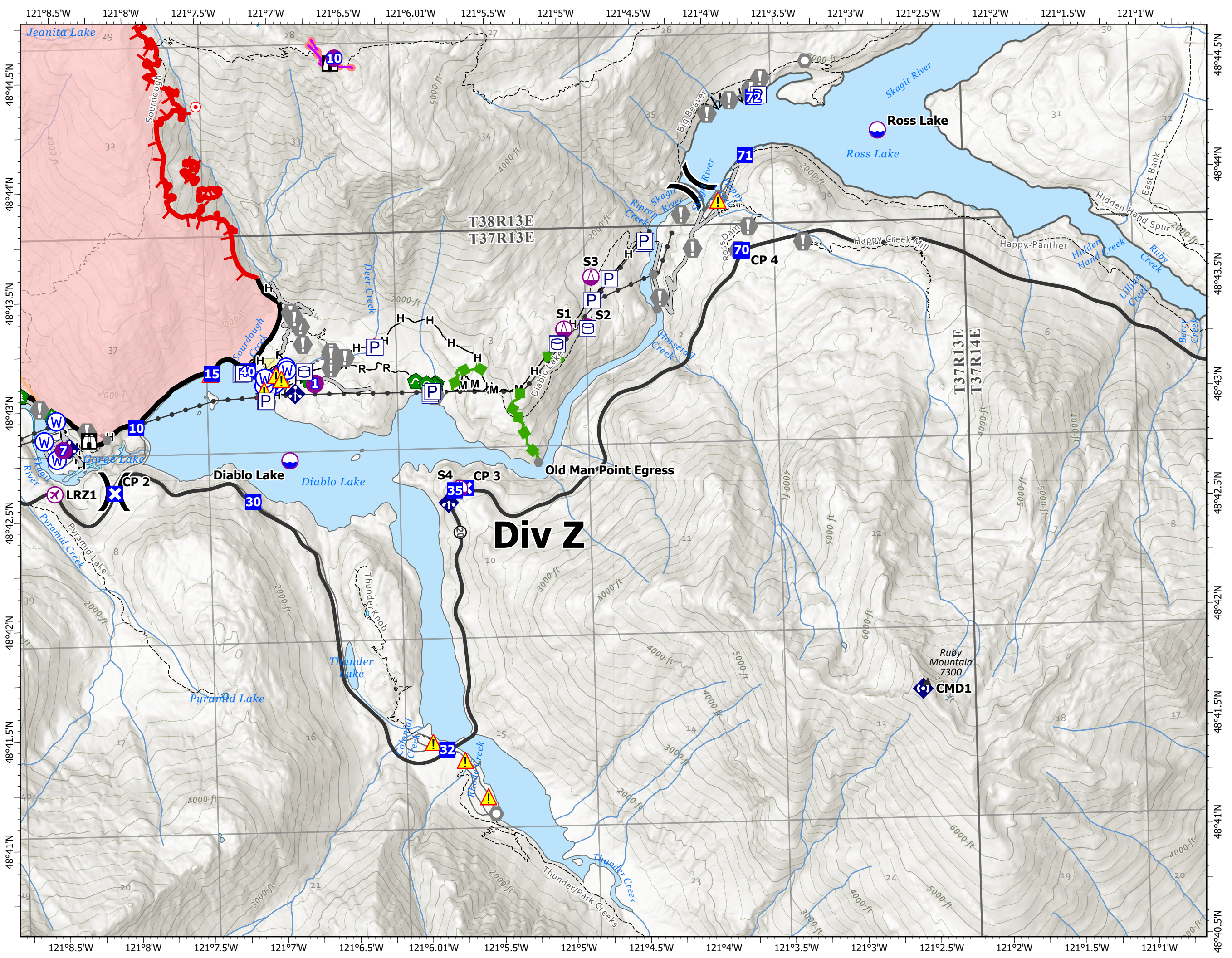
Operations

Sourdough
WA-NCP-000262
8/27/2023

6138 acres at 08/24/23 @2126



- Pump
- Water Tank
- Aerial Hazard
- UAS Launch and Recovery
- Dip Site
- Helispot
- Sling Site
- Division Break
- Drop Point
- Closure
- Lookout
- Hot Spot - Spot Fire
- Value at Risk
- Other
- Landmark
- Gate
- Bridge
- Hazard Tree
- Culvert
- Mobile Weather Unit
- Repeater
- Hazard
- Water Source
- Historic Structure
- Mountain Peaks (ft)
- Contained
- Uncontained
- Completed Fuel Break
- Completed Hand Line
- Completed Mixed Construction Line
- Completed Road as Line
- Access or Improved Road
- Other
- Escape Route
- Retardant Drop
- Transmission Lines
- Highways
- Roads
- Trails
- Fuels Treatments
- Seattle City Light Property



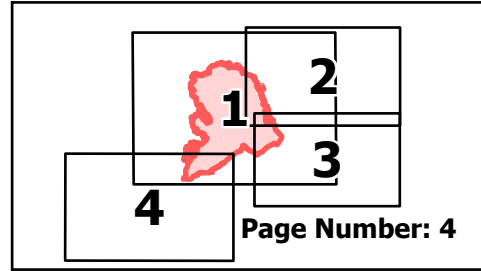
North American 1983 Datum.
LatLong Grid

0 0.25 0.5 Miles

Operations

Sourdough
WA-NCP-000262
8/27/2023

6138 acres at 08/24/23 @2126



- Other Property
- Pump
- UAS Launch and Recovery
- Dip Site
- Helispot
- Division Break
- Incident Command Post
- Drop Point
- Closure
- Hot Spot - Spot Fire
- Other
- Landmark
- Gate
- Historic Structure
- Mountain Peaks (ft)
- Contained
- Uncontained
- Completed Hand Line
- Completed Road as Line
- Transmission Lines
- Highways
- Roads
- Trails
- Fire History
- Seattle City Light Property



North American 1983 Datum.
Lat/Long Grid

0 0.25 0.5 1 Miles

