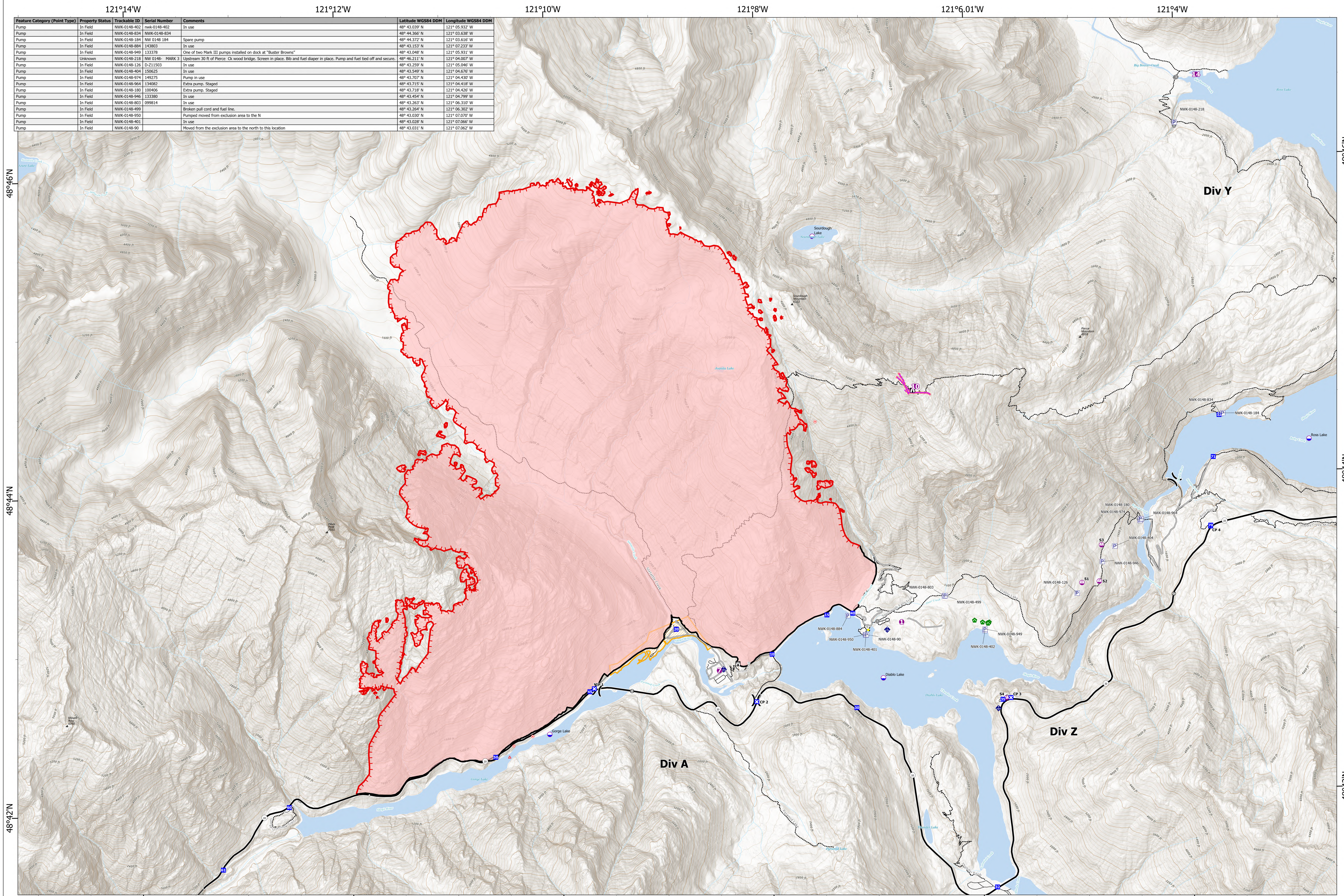


# Accountable Property



| Feature Category (Point Type) | Property Status | Trackable ID | Serial Number   | Comments  | Latitude WGS84 DDM | Longitude WGS84 DDM |
|-------------------------------|-----------------|--------------|-----------------|---|--------------------|---------------------|
| Pump                          | In Field        | NWK-0148-402 | nwk-0148-402    | In use  | 48° 43.039' N      | 121° 05.932' W      |
| Pump                          | In Field        | NWK-0148-834 | NWK-0148-834    |   | 48° 44.366' N      | 121° 03.638' W      |
| Pump                          | In Field        | NWK-0148-184 | NW 0148 184     | Spare pump  | 48° 44.372' N      | 121° 03.616' W      |
| Pump                          | In Field        | NWK-0148-884 | 143803          | In use  | 48° 43.153' N      | 121° 07.233' W      |
| Pump                          | In Field        | NWK-0148-949 | 133378          | One of two Mark III pumps installed on dock at "Buster Browns"  | 48° 43.048' N      | 121° 05.931' W      |
| Pump                          | Unknown         | NWK-0148-218 | NW 0148- MARK 3 | Upstream 30 ft of Pierce. Ck wood bridge. Screen in place. Bib and fuel diaper in place. Pump and fuel tied off and secure. | 48° 46.211' N      | 121° 04.027' W      |
| Pump                          | In Field        | NWK-0148-126 | D-211503        | In use  | 48° 43.259' N      | 121° 05.046' W      |
| Pump                          | In Field        | NWK-0148-404 | 150625          | In use  | 48° 43.549' N      | 121° 04.676' W      |
| Pump                          | In Field        | NWK-0148-974 | 149275          | Pump in use   | 48° 43.707' N      | 121° 04.430' W      |
| Pump                          | In Field        | NWK-0148-964 | 134082          | Extra pump. Staged  | 48° 43.715' N      | 121° 04.418' W      |
| Pump                          | In Field        | NWK-0148-180 | 100406          | Extra pump. Staged  | 48° 43.718' N      | 121° 04.426' W      |
| Pump                          | In Field        | NWK-0148-946 | 133380          | In use  | 48° 43.454' N      | 121° 04.799' W      |
| Pump                          | In Field        | NWK-0148-803 | 099814          | In use  | 48° 43.263' N      | 121° 06.310' W      |
| Pump                          | In Field        | NWK-0148-499 |                 | Broken pull cord and fuel line.   | 48° 43.264' N      | 121° 06.302' W      |
| Pump                          | In Field        | NWK-0148-950 |                 | Pumped moved from exclusion area to the N   | 48° 43.030' N      | 121° 07.070' W      |
| Pump                          | In Field        | NWK-0148-401 |                 | In use  | 48° 43.028' N      | 121° 07.066' W      |
| Pump                          | In Field        | NWK-0148-90  |                 | Moved from the exclusion area to the north to this location   | 48° 43.031' N      | 121° 07.062' W      |

**Sourdough**  
**WA-NCP-000262**  
**8/29/2023**  
*6221 acres at 08/27/23 @2123*

- Dip Site
- Helispot
- Sling Site
- x Division Break
- Drop Point
- Closure
- Lookout
- Hot Spot - Spot Fire
- Bridge
- Culvert
- ◆ Mobile Weather Unit
- Pump
- Access or Improved Road
- Highlighted Feature
- Retardant Drop
- Contained
- Uncontained
- Paved Road
- Local Road
- - - Tunnel

8/28/2023 2020  
 Acres from IR and GPS  
 North American 1983 Datum. Lat/Long Grid