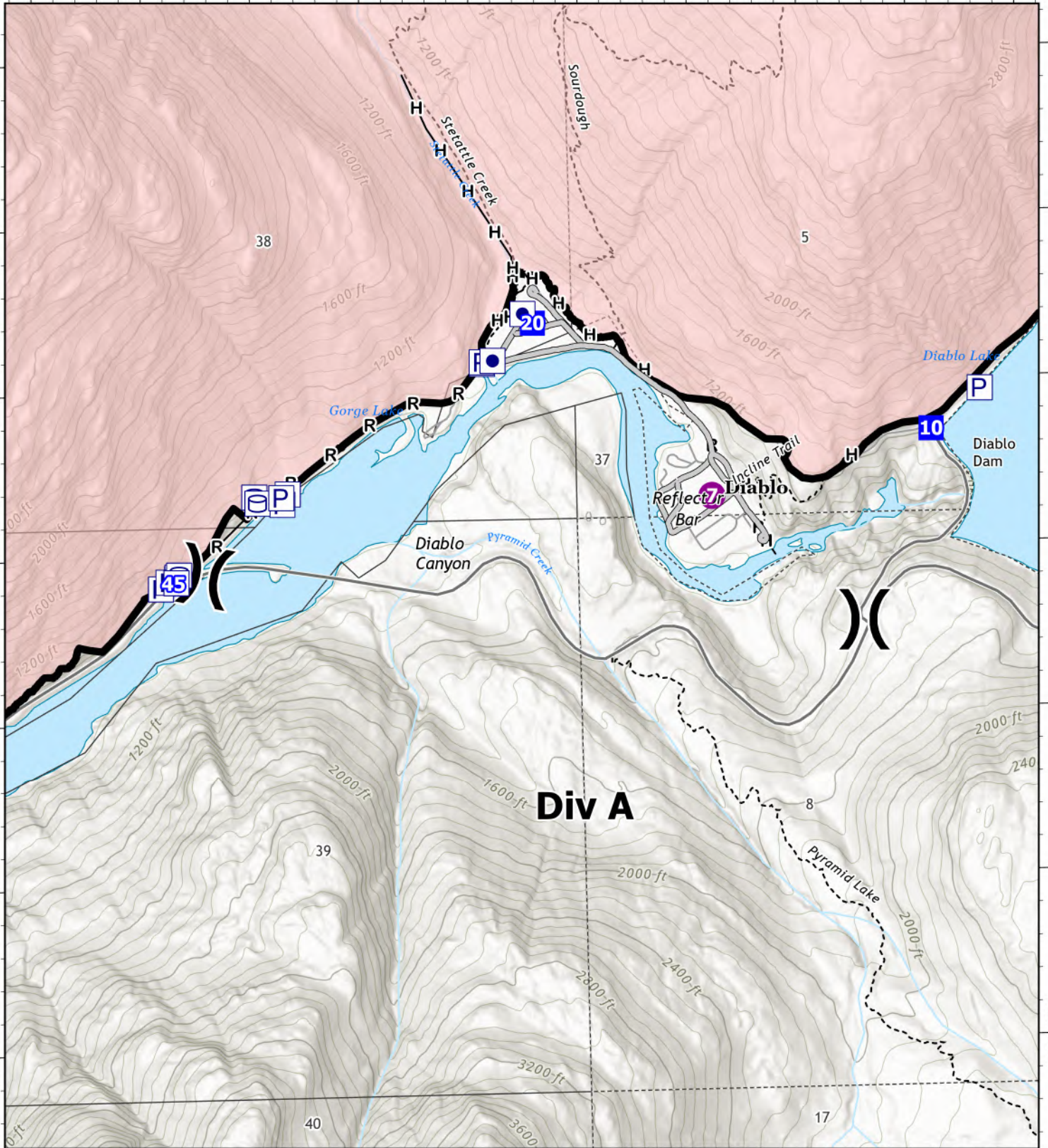


121°10'W

121°8'W

48°42'N

48°42'N



Div A

121°10'W

121°8'W

IAP
Div A
Sourdough
WA-NCP-000262
8/29/2023
 6221 acres at 08/27/23 @2123

- Other Property
- Pump
- Water Tank
- Helispot
- X Division Break
- Drop Point
- H- Completed Hand Line
- R- Completed Road as Line
- Access or Improved Road
- Contained
- Local Connector
- Local Road
- - - Trail

8/28/2023 2017
 Acres from IR and GPS



0 0.13 0.25 0.5 Miles

North American Datum
 Lat/Long Grid