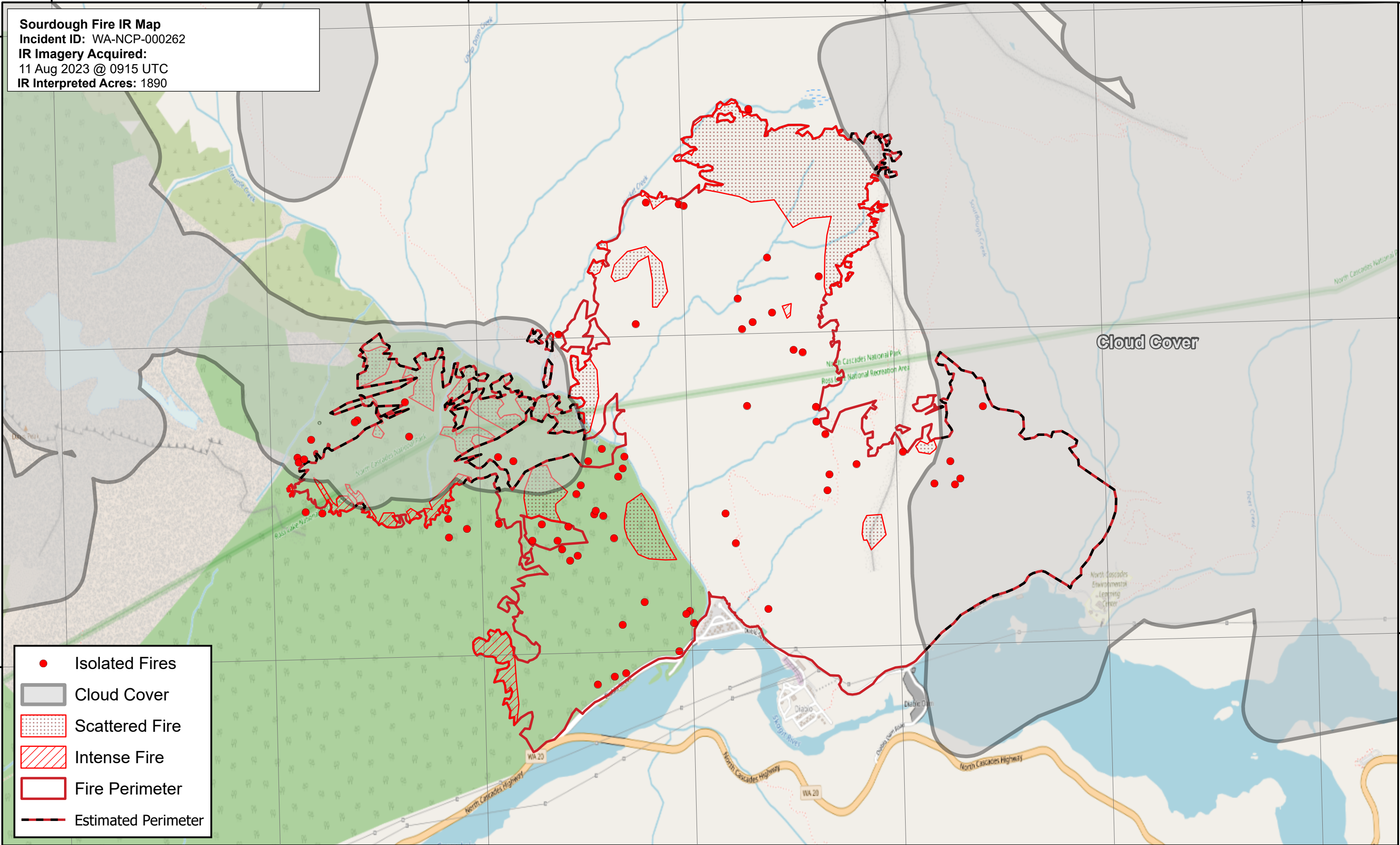
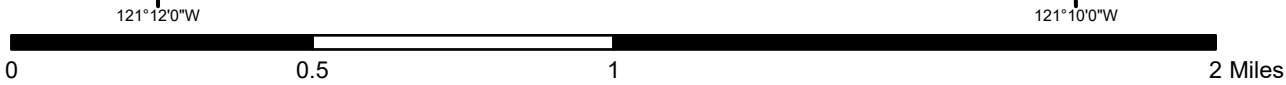




121°12'0"W 121°10'0"W 121°8'0"W 121°6'0"W

**Sourdough Fire IR Map**  
Incident ID: WA-NCP-000262  
IR Imagery Acquired:  
11 Aug 2023 @ 0915 UTC  
IR Interpreted Acres: 1890

- Isolated Fires
- Cloud Cover
- ▨ Scattered Fire
- ▧ Intense Fire
- ▭ Fire Perimeter
- Estimated Perimeter



Cloud Cover

48°45'0"N

48°44'0"N

48°43'0"N

48°45'0"N

48°44'0"N

48°43'0"N