

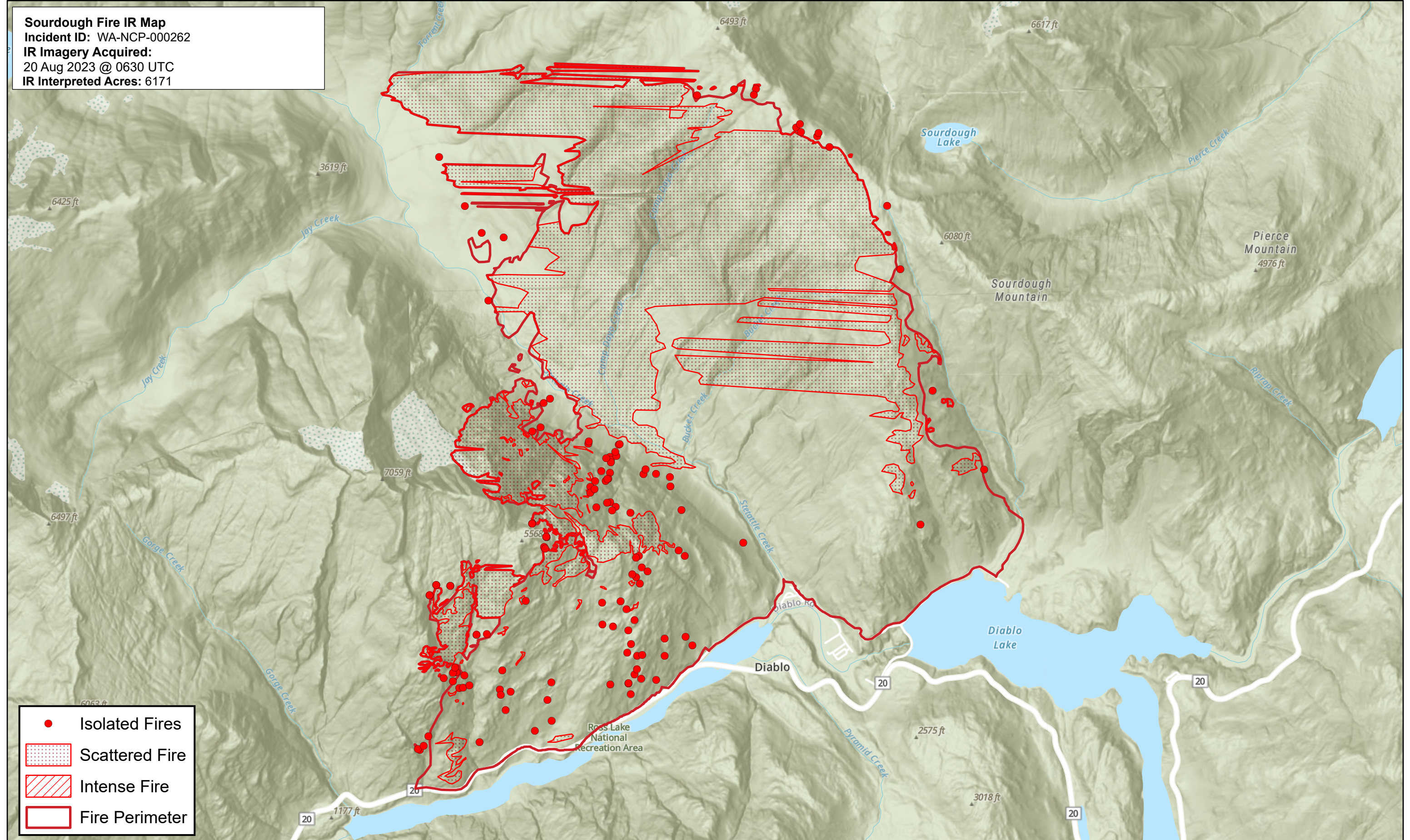


121°15'0"W

121°10'0"W

121°5'0"W

Sourdough Fire IR Map
 Incident ID: WA-NCP-000262
 IR Imagery Acquired:
 20 Aug 2023 @ 0630 UTC
 IR Interpreted Acres: 6171



- Isolated Fires
- Scattered Fire
- Intense Fire
- Fire Perimeter

