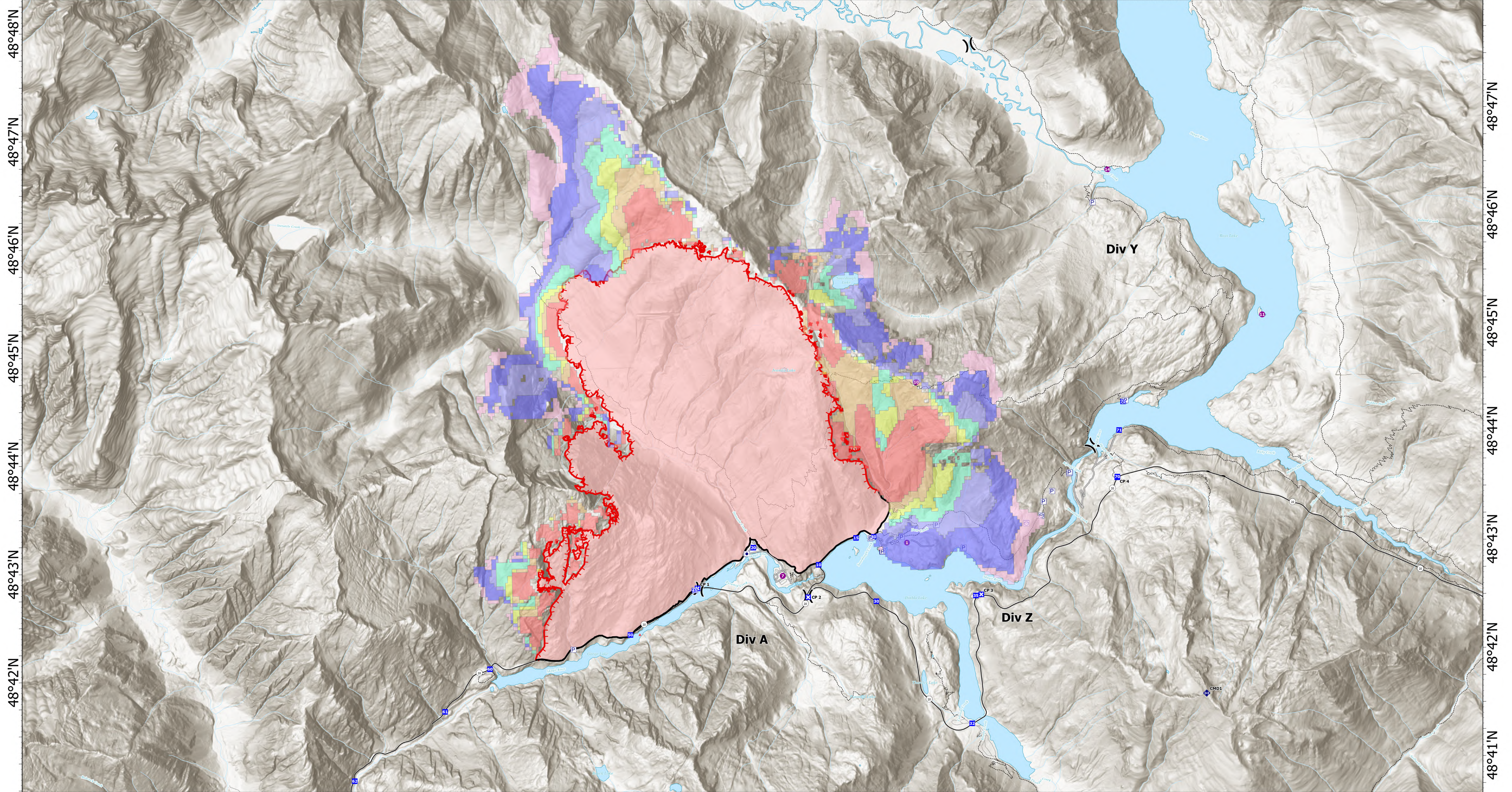


121°18'W 121°17'W 121°16'W 121°15'W 121°14'W 121°13'W 121°12'W 121°11'W 121°10'W 121°9'W 121°8'W 121°7'W 121°6.01'W 121°5'W 121°4'W 121°3'W 121°2'W 121°1'W 121°W 120°59'W



121°19'W 121°18'W 121°17'W 121°16'W 121°15'W 121°14'W 121°13'W 121°12'W 121°11'W 121°10'W 121°9'W 121°8'W 121°7'W 121°6.01'W 121°5'W 121°4'W 121°3'W 121°2'W 121°1'W 121°W 120°59'W

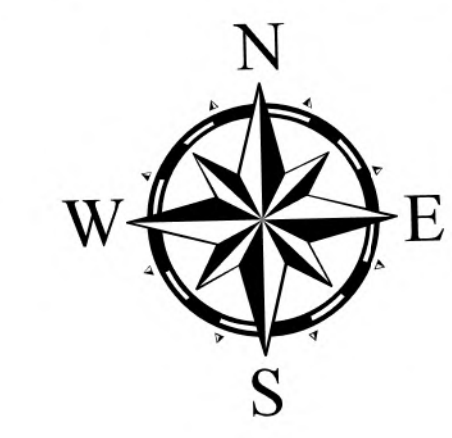
**Sourdough**  
**WA-NCP-000262**  
**8/28/2023**

6221 acres at 08/27/23 @2123

8/28/2023 1130  
Acres from IR and GPS

### Fire Spread Probability

- <0.2%
- 0.2-4.9%
- 5-19%
- 20-39%
- 30-59%
- 60-79%
- 80-100%



North American 1983 Datum. LatLong Grid

