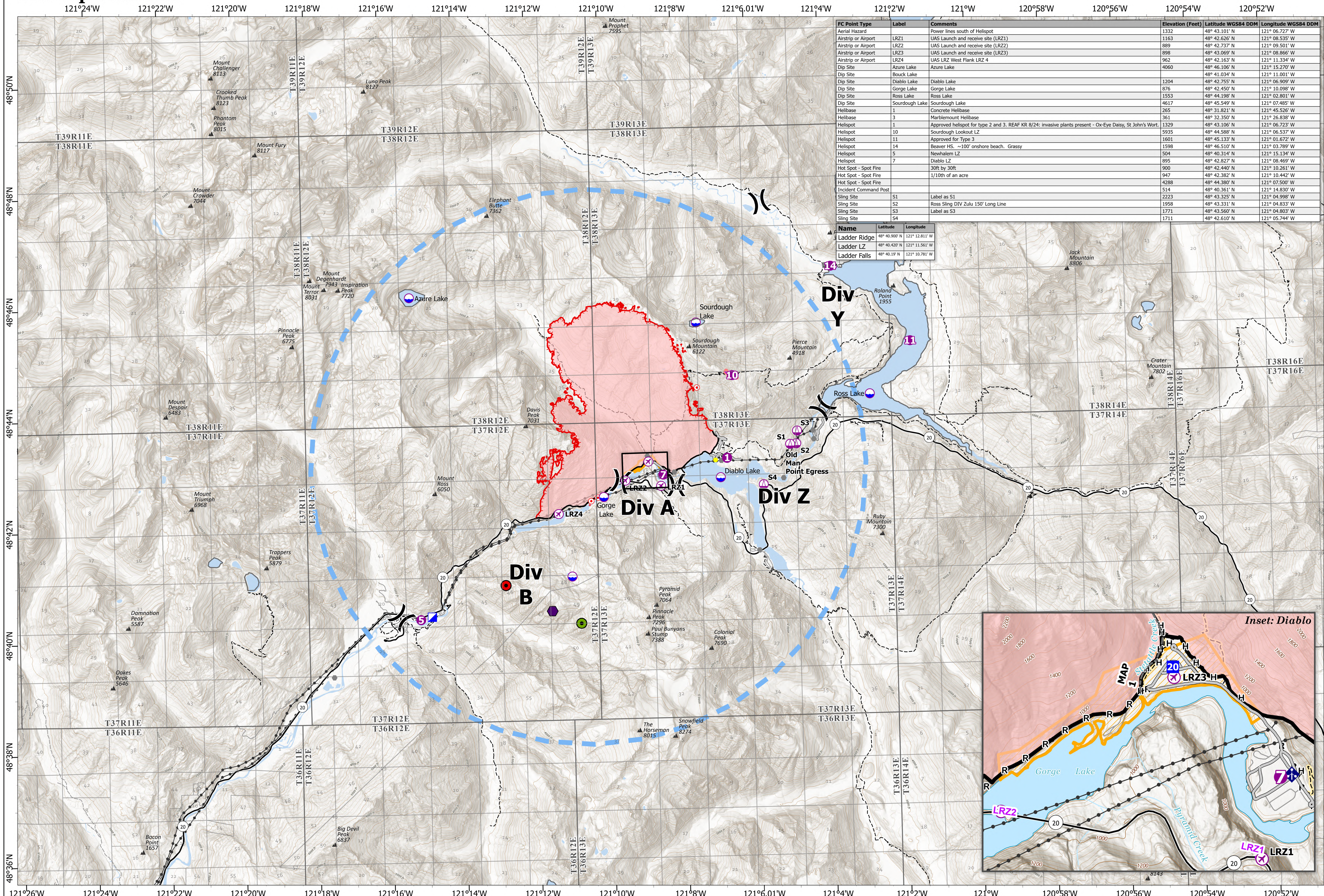
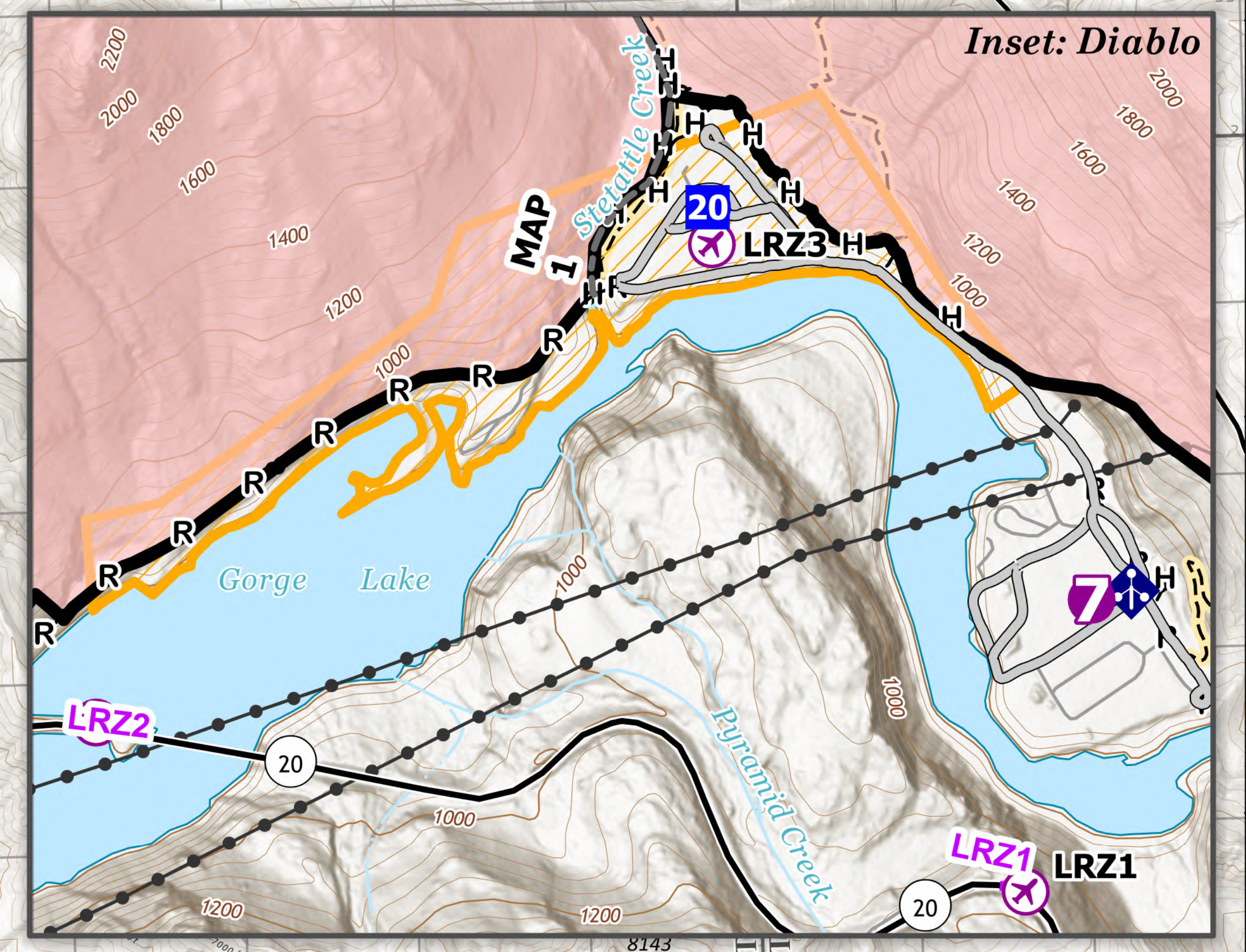


Air Operations



FC Point Type	Label	Comments	Elevation (Feet)	Latitude WGS84 DDM	Longitude WGS84 DDM
Aerial Hazard		Power lines south of Helispot	1332	48° 43.101' N	121° 06.727' W
Airstrip or Airport	LRZ1	UAS Launch and receive site (LRZ1)	1163	48° 42.626' N	121° 08.535' W
Airstrip or Airport	LRZ2	UAS Launch and receive site (LRZ2)	889	48° 42.737' N	121° 09.501' W
Airstrip or Airport	LRZ3	UAS Launch and receive site (LRZ3)	898	48° 43.069' N	121° 08.866' W
Airstrip or Airport	LRZ4	UAS LRZ West Flank LRZ 4	962	48° 42.163' N	121° 11.334' W
Dip Site	Azure Lake	Azure Lake	4060	48° 46.106' N	121° 15.270' W
Dip Site	Bouck Lake			48° 42.034' N	121° 11.001' W
Dip Site	Diablo Lake	Diablo Lake	1204	48° 42.755' N	121° 06.909' W
Dip Site	Gorge Lake	Gorge Lake	876	48° 42.450' N	121° 10.098' W
Dip Site	Ross Lake	Ross Lake	1553	48° 44.198' N	121° 02.801' W
Dip Site	Sourdough Lake	Sourdough Lake	4617	48° 45.549' N	121° 07.485' W
Helibase	1	Concrete Helibase	265	48° 31.821' N	121° 45.526' W
Helibase	3	Marblemount Helibase	361	48° 33.359' N	121° 26.838' W
Helispot	10	Approved helispot for type 2 and 3. REAF KR 8/24; invasive plants present - Ox-Eye Daisy, St John's Wort	1329	48° 43.106' N	121° 06.723' W
Helispot	11	Approved for Type 3	1935	48° 44.588' N	121° 06.537' W
Helispot	14	Beaver HS. ~100' onshore beach. Grassy	1501	48° 45.133' N	121° 01.672' W
Helispot	5	Newhalem LZ	1598	48° 46.510' N	121° 03.789' W
Helispot	7	Diablo LZ	504	48° 40.314' N	121° 15.134' W
Hot Spot - Spot Fire		30ft by 30ft	895	48° 42.827' N	121° 08.469' W
Hot Spot - Spot Fire		1/10th of an acre	900	48° 42.440' N	121° 10.261' W
Hot Spot - Spot Fire			947	48° 44.382' N	121° 10.442' W
Hot Spot - Spot Fire			4288	48° 42.380' N	121° 07.500' W
Incident Command Post			514	48° 40.361' N	121° 14.830' W
Sling Site	S1	Label as S1	2223	48° 43.255' N	121° 04.998' W
Sling Site	S2	Ross Sling DIV Zulu 150' Long Line	1958	48° 43.331' N	121° 04.833' W
Sling Site	S3	Label as S3	1771	48° 43.560' N	121° 04.803' W
Sling Site	S4	Label as S3	1711	48° 42.610' N	121° 05.744' W

Name	Latitude	Longitude
Ladder Ridge	48° 40.900' N	121° 12.811' W
Ladder LZ	48° 40.420' N	121° 11.561' W
Ladder Falls	48° 40.19' N	121° 10.781' W



**Sourdough
WA-NCP-000262
8/29/2023**
6221 acres at 08/27/23 @2123

- Aerial Hazard
- Incident Command Post
- Retardant Drop
- Ladder Falls
- UAS Launch and Recovery
- Hot Spot - Spot Fire
- Temporary Flight Restriction
- Ladder Ridge
- Dip Site
- Other
- Contained
- Ladder LZ
- Helispot
- Access or Improved Road
- Uncontained
- Highlighted Feature
- NOCA Trails
- Other
- Transmission Lines
- x Division Break
- Other
- Other

8/28/2023 1945
Acres from IR and GPS
North American 1983 Datum. Lat/Long Grid